

## Ongoing caution urged towards snowdrifts. Due to warmth and solar radiation, naturally triggered avalanches can reach exposed transportation routes.



Gurktaler Alpen, Seetaler Alpen, Koralpe, Westliche Fischbacher Alpen und Grazer Bergland, Östliche Fischbacher Alpen und Wechselgebiet, Stub- und Gleinalpe



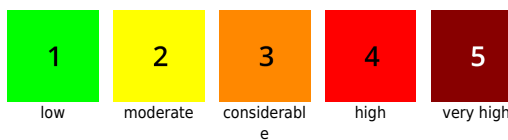
Totes Gebirge, Dachsteingebiet, Schladminger Tauern Nord, Nördliche Wölzer Tauern, Schladminger Tauern Süd, Südliche Wölzer Tauern, Rottenmanner Tauern, Ennstaler Alpen, Seckauer Tauern, Eisenerzer Alpen, Mürtzaler Alpen, Hochschwabgebiet, Mürtzsteger Alpen



### Avalanche problems



### Danger ratings



### Expositions



**09.02.2022**

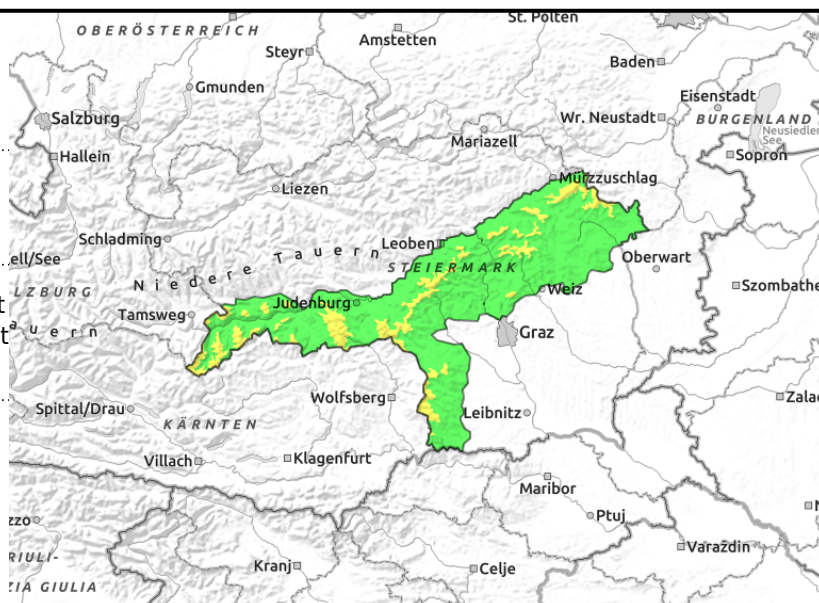
**Gurktaler Alpen, Seetaler Alpen, Koralpe, Westliche Fischbacher Alpen und Grazer Bergland, Östliche Fischbacher Alpen und Wechselgebiet, Stub- und Gleinalpe**



wide-ranging drifts, also distant from ridges, forest zones, forest lanes



naturally triggered avalanches, hefty warming impulse



## Snowdrifts at high altitudes, naturally triggered avalanches at low altitudes

Avalanche danger down to intermediate altitudes is moderate, below that altitude danger is low. Snowdrifts are the cause of danger zones at high altitudes, they extend down to sparsely wooded zones, esp. in N/E/S aspects. On wind-loaded slopes and in drifted clearances, as well as in general behind protruberances, slabs can be triggered. Caution urged towards freshly formed cornices - they are instable. At intermediate and low altitudes the early morning warmth can cause naturally triggered wet-snow and glide-snow avalanches on sunny slopes, in isolated cases they can endanger exposed transportation routes.

### Snowpack structure

Fresh snow and stormy NW winds generated new trigger-sensitive drifts on Monday. Potential weak layers are the soft layers inside the fresh drifts and inside the old snow on shady slopes. The snowpack is highly irregular: windblown zones alternate with cavities filled to the brim with drifts. On sunny slopes the snowpack is already moist and becomes moister during the course of the day.

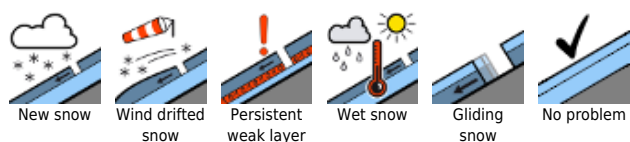
### Weather

On Wednesday, generally sunny weather will prevail. In the morning between Gurktal Alps and Wechsel region there will be some clouds, but they will disperse over midday. Generally sunny in the afternoon. Winds have eased but will still be brisk from the west (over 50 km/hr) - especially in the Wechsel region where 70 km/hr is possible. Milder. At 2000 m: 4 degrees. The zero-degree level will ascend to 3000 m.

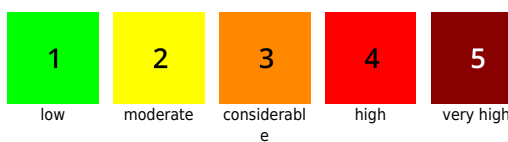
### Outlook

Due to warmth and solar radiation, the snowpack will gradually stabilize.

#### Avalanche problems



#### Danger ratings



#### Expositions



**09.02.2022**

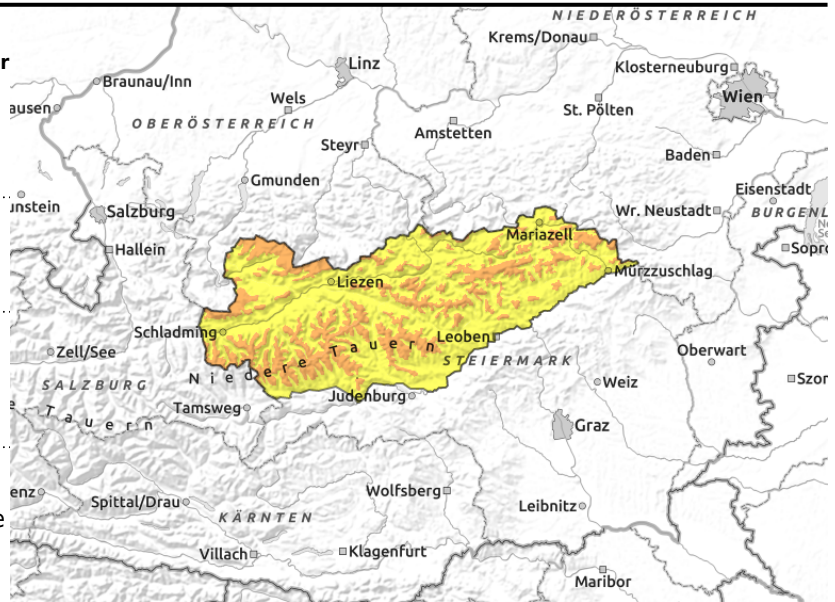
**Totes Gebirge, Dachsteingebiet, Schladminger Tauern Nord, Nördliche Wölzer Tauern, Schladminger Tauern Süd, Südliche Wölzer Tauern, Rottenmanner Tauern, Ennstaler Alpen, Seckauer Tauern, Eisenerzer Alpen, Mürztaler Alpen, Hochschwabgebiet, Mürzsteger Alpen**



wide-ranging snowdrifts, also distant from ridges in forest zones and forest lanes



naturally triggered avalanche activity, hefty warming impulse



## Considerable avalanche danger, large-sized avalanches possible

Avalanche danger down to intermediate altitudes is considerable, below that altitude danger is moderate. Snowdrifts are the cause of danger zones at high altitudes, they extend down to sparsely wooded zones, esp. in N/E/S aspects. On wind-loaded slopes and in drifted clearances, as well as in general behind protruberances, slabs can be triggered. Caution urged towards freshly formed cornices - they are unstable. At intermediate and low altitudes the early morning warmth can cause naturally triggered wet-snow and glide-snow avalanches on sunny slopes, in isolated cases they can endanger exposed transportation routes.

### Snowpack structure

In the Northern Alps there was up to 60 cm of fresh snow registered on Monday. The fresh snow was transported by stormy NW winds, deposited in leeward zones, in forests. These masses lie mostly atop a hardened old snowpack surface, only in shady zones is the snowpack still soft, often powdery. Bonding of fresh drifts to the surface below them is poor on shady slopes. Also weak layers exist inside the old snowpack. On south-facing slopes bonding is good but there are weak layers inside the fresh drifts (loose-snow). Exposed zones are windblown and icy. On south-facing slopes the snowpack is already moist and destabilizes during the course of the day.

### Weather

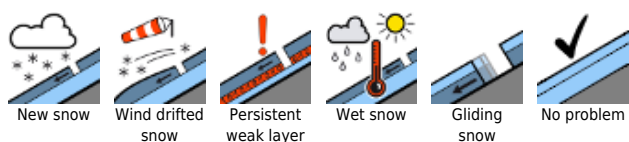
On Wednesday, generally sunny weather will prevail. In the morning between Gurktal Alps and Wechsel region there will be some clouds, but they will disperse over midday. Generally sunny in the afternoon. Winds have eased but will still be brisk from the west (over 50 km/hr) - especially in the Wechsel region where 70 km/hr is possible. Milder. At 2000 m: 4 degrees. The zero-degree level will ascend to 3000 m.

### Outlook

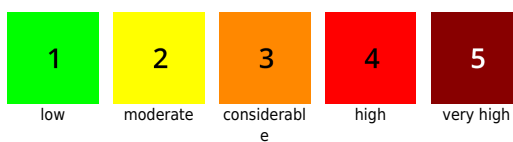
Due to warmth and solar radiation, the snowpack will gradually stabilize. The wet snow problem persists.

Translated by Jeffrey McCabe, [www.creativtrans.com](http://www.creativtrans.com)

#### Avalanche problems



#### Danger ratings



#### Expositions

