

Fresh snowfall + storm winds - rising avalanche danger



forestline

Totes Gebirge, Dachsteingebiet, Schladminger Tauern Nord, Nördliche Wölzer Tauern, Rottenmanner Tauern, Ennstaler Alpen, Mürzsteger Alpen, Eisenerzer Alpen, Seckauer Tauern, Südliche Wölzer Tauern, Schladminger Tauern Süd, Mürztaler Alpen, Hochschwabgebiet

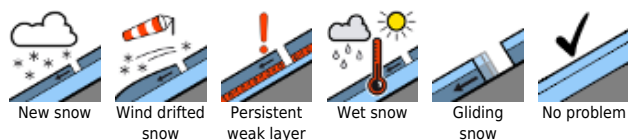


1400 m

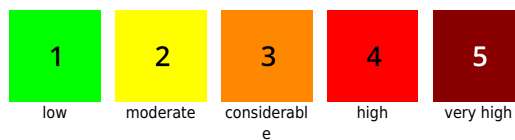
Gurktaler Alpen, Seetaler Alpen, Stub- und Gleinalpe, Westliche Fischbacher Alpen und Grazer Bergland, Östliche Fischbacher Alpen und Wechselgebiet, Koralpe



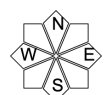
Avalanche problems



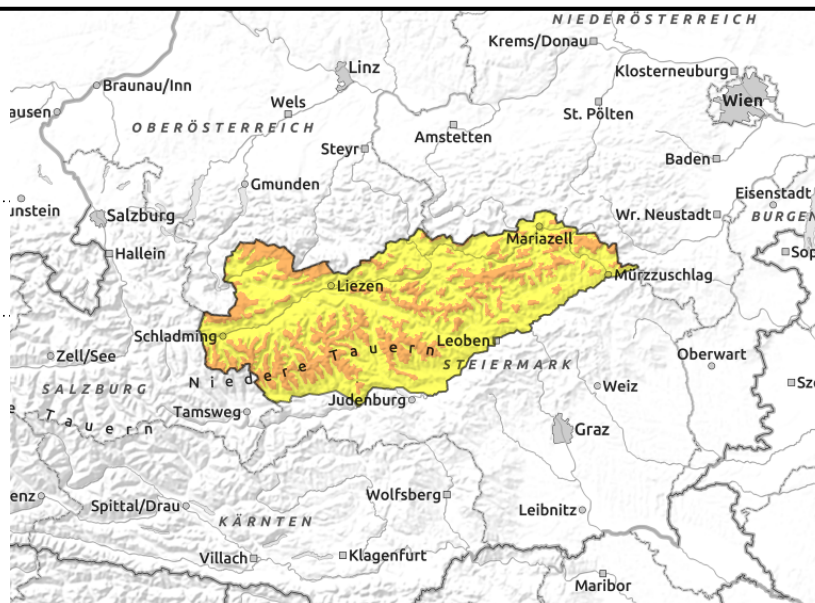
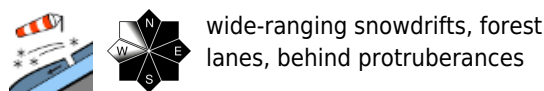
Danger ratings



Expositions



Totes Gebirge, Dachsteingebiet, Schladminger Tauern Nord, Nördliche Wölzer Tauern, Rottenmanner Tauern, Ennstaler Alpen, Mürzsteger Alpen, Eisenerzer Alpen, Seckauer Tauern, Südliche Wölzer Tauern, Schladminger Tauern Süd, Mürztaler Alpen, Hochschwabgebiet



Fresh snowdrift accumulations from stormy NW winds

Avalanche danger above the treeline is considerable. Fresh drifts are being generated in N/E/S aspects. In entry zones to steep gullies and open spaces, as well as behind protruberances, even the weight of one sole skier can trigger a slab avalanche. Caution urged towards freshly built cornices, they are instable. Poor visibility and stormy winds make it more difficult to recognize avalanche prone locations.

Snowpack structure

Fresh snow is being worked on by stormy NW winds, generating drifts and depositing them in E/SE leeward terrain, also in forested zones. The drifts are growing and lie deposited atop hardened old snowpack surfaces, only in shady high-altitude terrain is the wind-loaded surface still soft or powdery or blanketed with surface hoar. In transitions to old snow and inside the fresh drifts themselves are soft layers which are weak. Exposed zones are generally windblown and icy.

Weather

On Sunday night a cold front will bring precipitation and stormy NW winds. In early morning, snowfall throughout the Styrian mountains. In southern regions clouds will soon disperse. In the northern barrier cloud regions and Niedere Tauern, up to 50 cm of fresh snow is expected, in Totes Gebirge even more. The high-altitude winds will be blowing at storm strength from the northwest amid icy temperatures. At 2000 m: -10 degrees.

Outlook

On Tuesday, mostly free of precipitation but heavily overcast, even foggy, amid ongoingly storm-strength NW winds and somewhat higher temperatures. The main problem persists: the snowdrift accumulations.

Avalanche problems



Danger ratings



Expositions



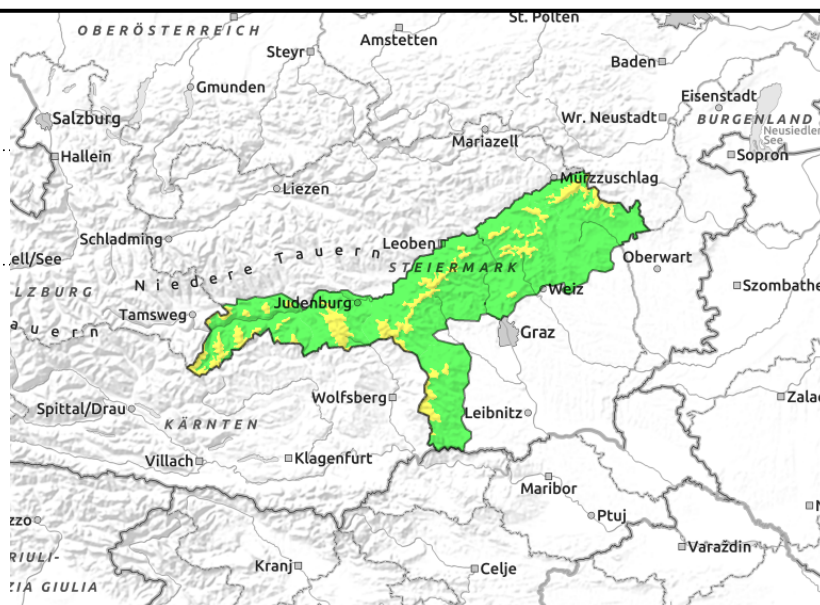
Gurktaler Alpen, Seetaler Alpen, Stub- und Gleinalpe, Westliche Fischbacher Alpen und Grazer Bergland, Östliche Fischbacher Alpen und Wechselgebiet, Koralpe



1400 m



wide-ranging snowdrifts, in forest lanes



Fresh drifts from stormy NW winds

Avalanche danger above 1400 m is moderate. Fresh drifts, particularly in N/E/S aspects constitute the danger zones. Prone to triggering snowdrift patches can trigger small slab avalanches by large additional loading. Also in forest lanes and open spaces at intermediate altitude, the avalanche prone locations should not be underestimated. Freshly formed cornices are instable.

Snowpack structure

As a result of fresh snow and stormy NW winds, the snowdrifts are the main danger on E/SE slopes and in leeward terrain. Weak layers: soft layers in the old snow and inside the fresh drifts. The snowpack is widely varied, windblown and hardened zones are immediately adjacent to deep snowdrift accumulations.

Weather

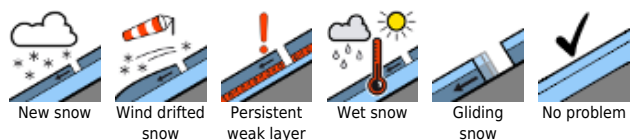
On Sunday night a cold front will bring precipitation and stormy NW winds. In early morning, snowfall throughout the Styrian mountains. In southern regions clouds will soon disperse. In the northern barrier cloud regions and Niedere Tauern, up to 50 cm of fresh snow is expected, in Totes Gebirge even more. The high-altitude winds will be blowing at storm strength from the northwest amid icy temperatures. At 2000 m: -10 degrees.

Outlook

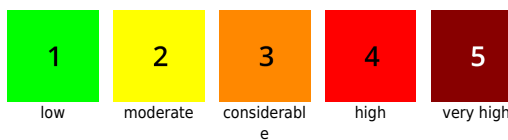
On Tuesday, mostly free of precipitation but heavily overcast, even foggy, amid ongoing storm-strength NW winds and somewhat higher temperatures. The main problem persists: the snowdrift accumulations.

Translated by Jeffrey McCabe, www.creativtrans.com

Avalanche problems



Danger ratings



Expositions

