







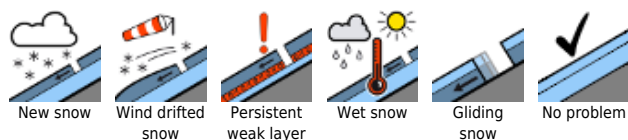


Increased snowdrift generation in northern barrier cloud regions. Poor visibility. Very unfavorable conditions.

	<p>forestline</p>	<p>Dachsteingebiet, Totes Gebirge, Ennstaler Alpen, Hochschwabgebiet, Mürzsteger Alpen, Eisenerzer Alpen, Rottenmanner Tauern, Nördliche Wölzer Tauern, Schladminger Tauern Nord, Schladminger Tauern Süd, Südliche Wölzer Tauern, Seckauer Tauern</p>	
		<p>Stub- und Gleinalpe, Korralpe, Mürtzaler Alpen, Westliche Fischbacher Alpen und Grazer Bergland</p>	
	<p>forestline</p>	<p>Gurktaler Alpen, Seetaler Alpen</p>	
	<p>timberline</p>	<p>Östliche Fischbacher Alpen und Wechselgebiet</p>	

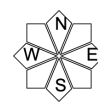
Avalanche problems



Danger ratings

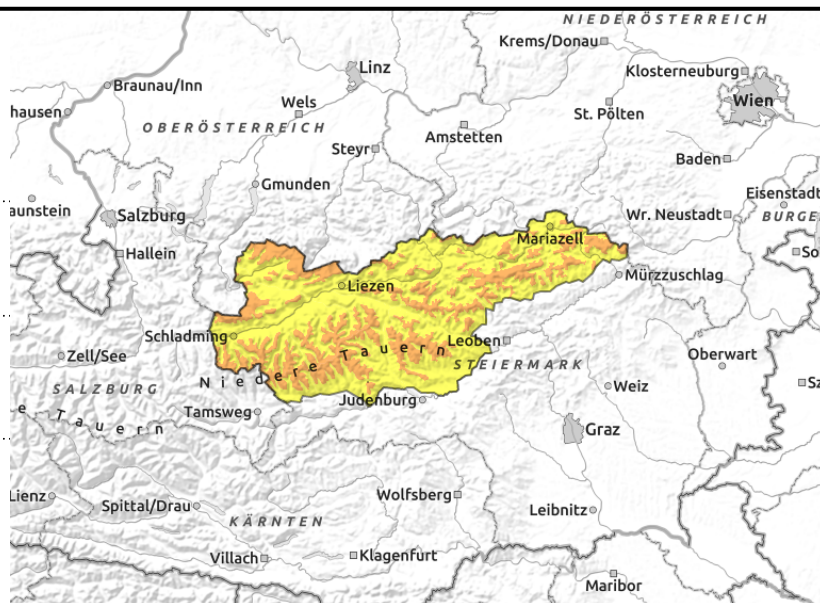


Expositions



01.02.2022

Dachsteingebiet, Totes Gebirge, Ennstaler Alpen, Hochschwabgebiet, Mürzsteiger Alpen, Eisenerzer Alpen, Rottenmanner Tauern, Nördliche Wölzer Tauern, Schladminger Tauern Nord, Schladminger Tauern Süd, Südliche Wölzer Tauern, Seckauer Tauern



forestline



lots of snowdrifts atop an unfavorable snowbase



heavy snowfall

Fresh snow plus snowdrifts. Storm. Poor visibility. Extremely negative backcountry conditions.

Avalanche danger above the treeline is considerable. Stormy winds are whipping all aspects. Also in forest lanes and clearances the drifts are being deposited. Naturally triggered avalanches can be expected in steep rough and rocky terrain. The likelihood of natural slab avalanches triggering during the daytime will increase. Ski tourers can trigger an avalanche even by minimum additional loading.

Snowpack structure

Gale-strength winds will whip up large snowdrift accumulations. Potential gliding layers: graupel, soft snow inside the snowdrifts. In the old snow are weak faceted crystals beneath a melt-freeze crust. Triggering can fracture down to deeper down layers in the snowpack.

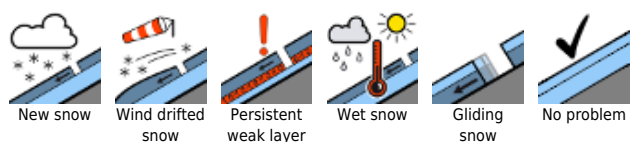
Weather

In the evening and during the night, snowfall will intensify further in Upper Styria. In the northern barrier cloud regions from Ausseerland to Mariazell, intensive snowfall, up to 60 cm of fresh snow is possible in 24 hours. In the Niedere Tauern, somewhat less. North of the Main Tauern Ridge, heavy snowfall on Tuesday, plus stormy winds and low temperatures. In the afternoon, the snowfall will ease temporarily. At 2000 m: -10 degrees. The NW winds will reach 50-110 km/hr, the strongest gusts can be expected in the afternoon along the Main Alpine Ridge.

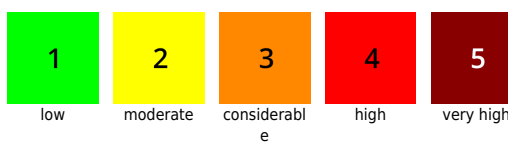
Outlook

On Wednesday, the intensive snowfall will continue in the Northern Alps as far as the Main Tauern Ridge. Avalanche danger will continue to increase.

Avalanche problems



Danger ratings

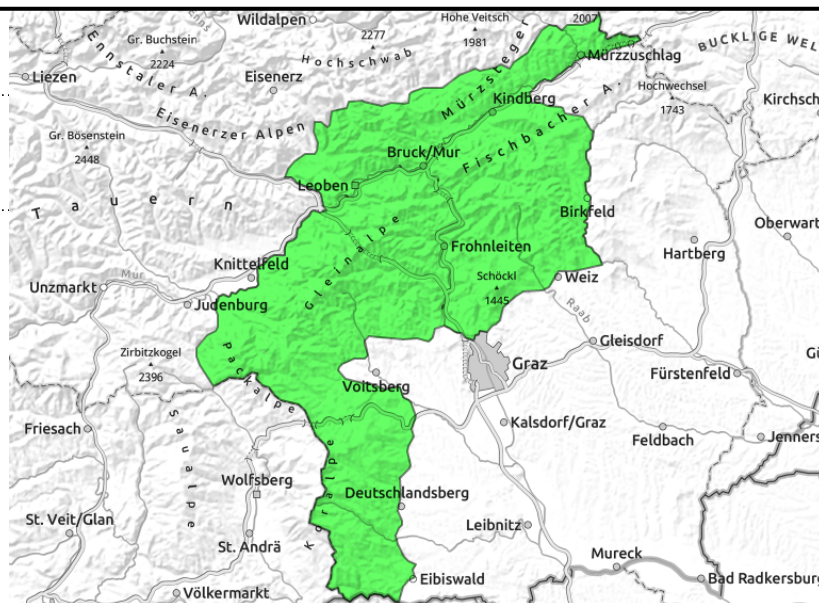
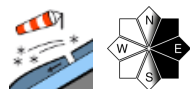


Expositions



01.02.2022

Stub- und Gleinalpe, Koralpe, Mürztaler Alpen, Westliche Fischbacher Alpen und Grazer Bergland



Low avalanche danger, heed small snowdrift patches in particular in bowls and behind protruberances.

Due to the strength of the storm winds, large-sized snowdrift patches can be generated, most will be deposited in wind-protected terrain, in bowls, or behind protruberances, and be triggerable only by large additional loading.

Snowpack structure

A few centimetres of fresh snow will be deposited atop the hardened old snowpack surface. At lower altitudes the snow is soft.

Weather

Also further to the south, snow showers can be expected, but only bringing minor amounts. Some clouds will disperse. At 2000 m: -10 degrees. The NW winds will reach 50-110 km/hr, the strongest gusts will be in the afternoon along the Main Alpine Ridge.

Outlook

Slight rise in danger levels is expected for Wednesday.

Avalanche problems



Danger ratings



Expositions



01.02.2022

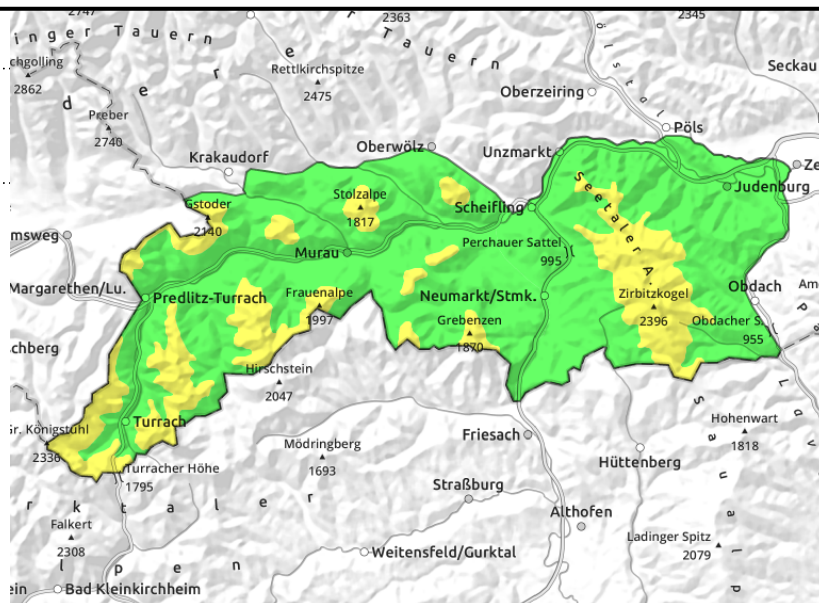
Gurktaler Alpen, Seetaler Alpen



forestline



forest lanes, behind protruberances



Some fresh snow. Storm wind.

Avalanche danger above the treeline is MODERATE. Danger zones occur in E/S aspects where slabs can be triggered even by minimum additional loading, but the triggered avalanches will be small sized (magnitude 2).

Snowpack structure

The fresh drifts cover surface hoar or a hardened snowpack surface. The fundament is compact and faceted only in zones where the snow is shallow.

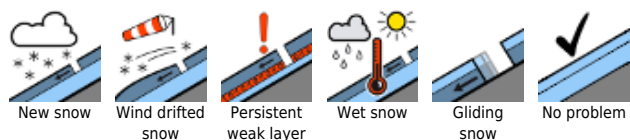
Weather

Also further to the south, snow showers can be expected, but only bringing minor amounts. Some clouds will disperse. At 2000 m: -10 degrees. The NW winds will reach 50-110 km/hr, the strongest gusts will be in the afternoon along the Main Alpine Ridge. A few centimetres of fresh snow is expected on Wednesday, plus storm-strength winds.

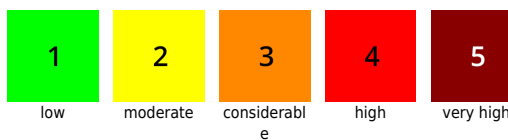
Outlook

No change in danger levels is expected for Wednesday.

Avalanche problems



Danger ratings

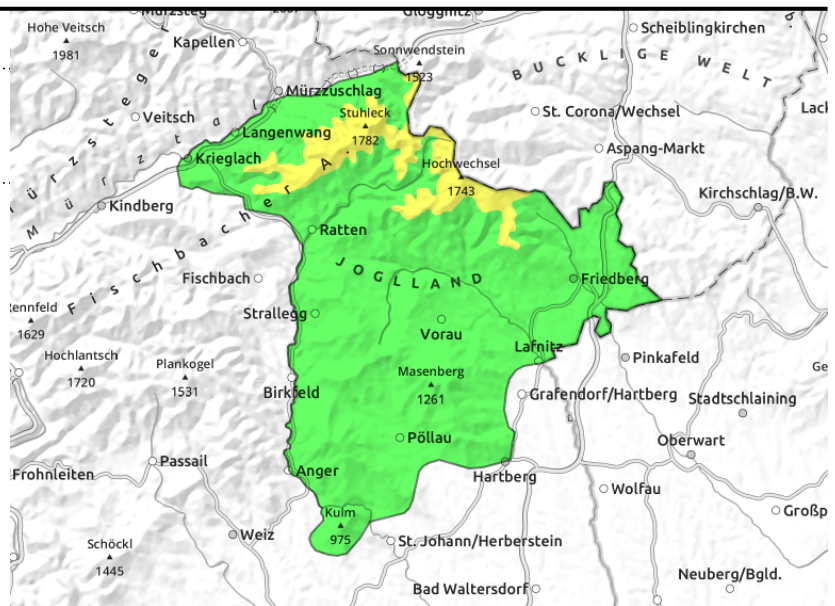
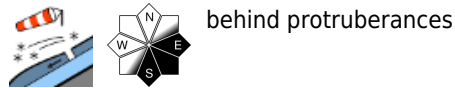
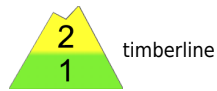


Expositions



01.02.2022

Östliche Fischbacher Alpen und Wechselgebiet



Some new snow. Storm winds.

Avalanche danger above the treeline is moderate. Danger zones lie in E/S aspects, where a slab can be triggered even by minimum additional loading, but only reach size 2. Caution urged near ridgelines, where slab avalanches can trigger with ease.

Snowpack structure

Fresh snowdrifts cover surface hoar or a hardened old snowpack surface. In some places the slopes are icy.

Weather

Also further to the south, snow showers can be expected, but only bringing minor amounts. Some clouds will disperse. At 2000 m: -10 degrees. The NW winds will reach 50-110 km/hr, the strongest gusts will be in the afternoon along the Main Alpine Ridge. A few centimetres of fresh snow is expected on Wednesday, plus storm-strength winds.

Outlook

No change in danger levels is expected

Translated by Jeffrey McCabe, www.creativtrans.com

Avalanche problems



Danger ratings



Expositions

