
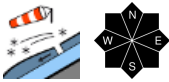

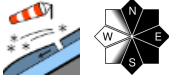

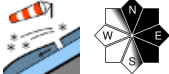


## Increased generation of snowdrifts in northern barrier cloud regions

	<p>timberline</p>	<p>Dachsteingebiet, Totes Gebirge, Ennstaler Alpen, Hochschwabgebiet, Mürztegger Alpen</p>	
	<p>forestline</p>	<p>Schladminger Tauern Nord, Nördliche Wölzer Tauern, Rottenmanner Tauern, Eisenerzer Alpen, Schladminger Tauern Süd, Südliche Wölzer Tauern, Seckauer Tauern</p>	
		<p>Gurktaler Alpen, Seetaler Alpen, Stub- und Gleinalpe, Koralpe, Mürztaler Alpen, Westliche Fischbacher Alpen und Grazer Bergland, Östliche Fischbacher Alpen und Wechselgebiet</p>	

### Avalanche problems



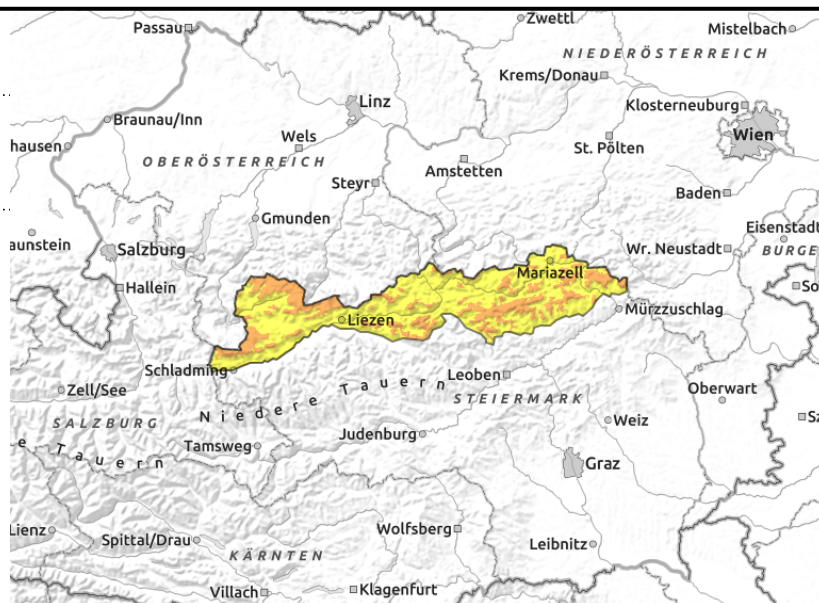
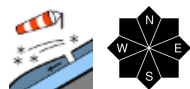
### Danger ratings



### Expositions



**Dachsteingebiet, Totes Gebirge, Ennstaler Alpen, Hochschwabgebiet, Mürzsteger Alpen**



**As snowfall sets in, stormy winds will generate new snowdrift accumulations**

The size of danger zones increases with ascending altitude. Above the treeline avalanche danger is CONSIDERABLE. Particularly the protected zones of the terrain with little wind influence will have drifts deposited anew: gullies, bowls, behind protruberances.

**Snowpack structure**

Gale-strength winds have blown crests, ridges and plateaus bare of snow in all aspects. The deposited not-too-cold fresh snowdrifts are generally hard. With ascending altitude this snow becomes colder and graupel is found at intermediate layers. At low altitudes the snow is moist. The newly generated snowdrift accumulations are, initially at least, well bonded with the snowpack below them.

**Weather**

Driven by the storm-low named "Nadia" over the Baltic Sea, a westerly to northwesterly air current continues to determine the weather. On Monday a cold front will traverse Styria. After a brief quiet spell when snowfall will pause and winds ease, cloud cover will quickly move into the Tauern and the Northern Alps and it will begin to snow during the morning. The W/NW winds will intensify. Fresh snow: about 20 cm, up to 30 cm in Totes Gebirge. The southern flank of the Alps will have better conditions, but medium-high clouds will also move in, bringing brief snow showers. Temperatures at midday: at 2000 m: -8 degrees; at 1500 m: -5 degrees. Milder on the southern flank of the Alps: -5 and -1 degree.

**Outlook**

On Monday night, a high-trough will reach the Eastern Alps. In its wake, a stormy NW air current will bring very moist air masses to the land, with abundant fresh snow in the northern barrier cloud regions. The avalanche danger levels will increase significantly.

**Avalanche problems**



**Danger ratings**



**Expositions**

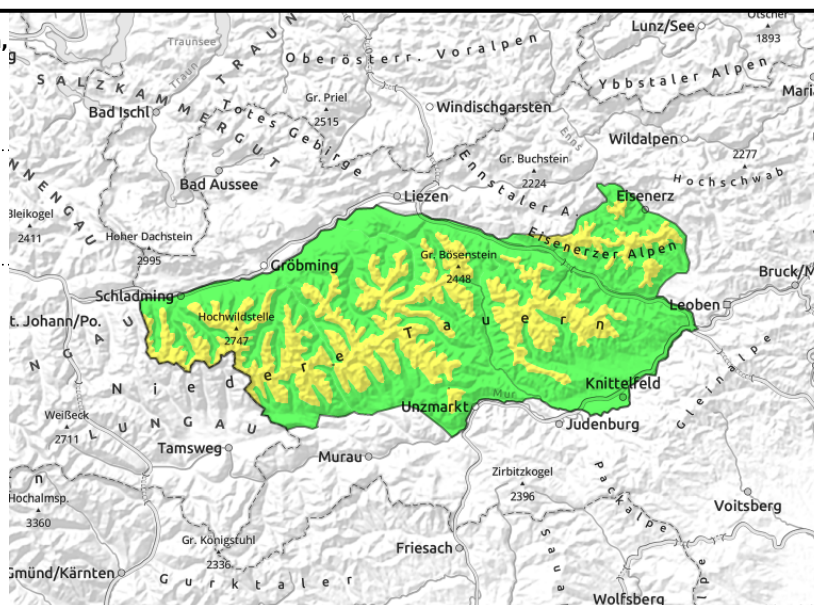


**31.01.2022**

**Schladminger Tauern Nord, Nördliche Wölzer Tauern, Rottenmanner Tauern, Eisenerzer Alpen, Schladminger Tauern Süd, Südliche Wölzer Tauern, Seckauer Tauern**



compact-to-hard snowdrift masses, large additional loading, utterly windblown terrain



## Moderate snowdrift problem during the day, quickly intensifying in the evening

The snowdrift danger is MODERATE above the treeline, LOW below that altitude.

Danger zones where large additional loading can trigger a compact-to-hard snowdrift mass are found particularly in gullies, bowls and behind protruberances. The higher you go, the easier to trigger a slab. Potential avalanches are small to medium-sized.

### Snowpack structure

The combination of gale-strength winds and relatively mild temperatures on Sunday has left its marks behind. The terrain is utterly windblown, the old snow has been laid free. The transported snow lies deposited atop hardened snowpack surfaces in wind-protected zones. Soft layers beneath the drifts and more deeply embedded weak layers (around the crusts) are not triggerable on Monday, i.e. require greater additional loading.

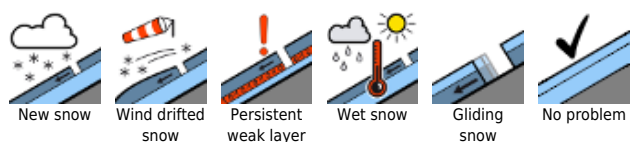
### Weather

Driven by the storm-low named "Nadia" over the Baltic Sea, a westerly to northwesterly air current continues to determine the weather. On Monday a cold front will traverse Styria. After a brief quiet spell when snowfall will pause and winds ease, cloud cover will quickly move into the Tauern and the Northern Alps and it will begin to snow during the morning. The W/NW winds will intensify. Fresh snow: about 20 cm, up to 30 cm in Totes Gebirge. The southern flank of the Alps will have better conditions, but medium-high clouds will also move in, bringing brief snow showers. Temperatures at midday: at 2000 m: -8 degrees; at 1500 m: -5 degrees. Milder on the southern flank of the Alps: -5 and -1 degree.

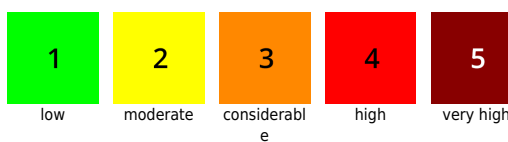
### Outlook

On Monday night, a high-trough will reach the Eastern Alps. In its wake, a stormy NW air current will bring very moist air masses to the land, with abundant fresh snow in the northern barrier cloud regions. The avalanche danger levels will increase significantly.

#### Avalanche problems



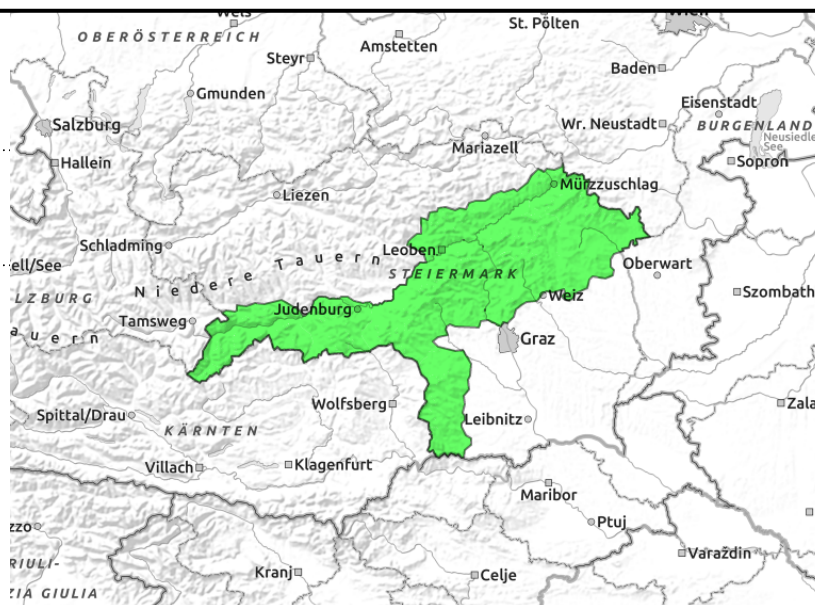
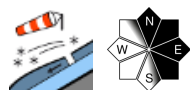
#### Danger ratings



#### Expositions



**Gurktaler Alpen, Seetaler Alpen, Stub- und Gleinalpe, Korralpe, Mürztaler Alpen, Westliche Fischbacher Alpen und Grazer Bergland, Östliche Fischbacher Alpen und Wechselgebiet**



**Low avalanche danger, caution urged towards small snowdrift patches esp. behind protruberances and in bowls**

Due to strong winds, the snowdrift patches are relatively small. Mostly the transported snow was deposited in wind-protected zones, in bowls or behind protruberances (small snowdrift patches, mostly triggerable by large additional loading).

**Snowpack structure**

The combination of gale-strength winds and relatively mild temperatures on Sunday has left its marks behind. The terrain is utterly windblown, the old snow has been laid free. At low altitudes the snow is soft.

**Weather**

Driven by the storm-low named “Nadia” over the Baltic Sea, a westerly to northwesterly air current continues to determine the weather. On Monday a cold front will traverse Styria. After a brief quiet spell when snowfall will pause and winds ease, cloud cover will quickly move into the Tauern and the Northern Alps and it will begin to snow during the morning. The W/NW winds will intensify. Fresh snow: about 20 cm, up to 30 cm in Totes Gebirge. The southern flank of the Alps will have better conditions, but medium-high clouds will also move in, bringing brief snow showers. Temperatures at midday: at 2000 m: -8 degrees; at 1500 m: -5 degrees. Milder on the southern flank of the Alps: -5 and -1 degree.

**Outlook**

On Monday night, a high-trough will reach the Eastern Alps. In its wake, a stormy NW air current will bring very moist air masses to the land, with abundant fresh snow in the northern barrier cloud regions. The avalanche danger levels will increase significantly.

Translated by Jeffrey McCabe, [www.creativtrans.com](http://www.creativtrans.com)

**Avalanche problems**



**Danger ratings**



**Expositions**

