

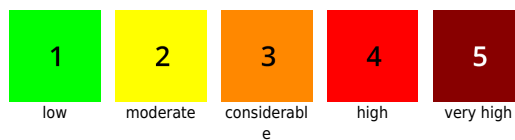
## Snowdrift problem at high altitudes, even below the treeline in NE massifs

	1800 m	Dachsteingebiet, Totes Gebirge		
	1300 m	Hochschwabgebiet, Mürzsteger Alpen		
	timberline	Gurktaler Alpen, Seetaler Alpen		  
		Koralpe, Stub- und Gleinalpe, Westliche Fischbacher Alpen und Grazer Bergland		
	timberline	Mürztaler Alpen, Östliche Fischbacher Alpen und Wechselgebiet		
	1900 m	Schladminger Tauern Nord, Nördliche Wölzer Tauern, Rottenmanner Tauern, Ennstaler Alpen, Eisenerzer Alpen, Seckauer Tauern, Südliche Wölzer Tauern, Schladminger Tauern Süd		  

### Avalanche problems



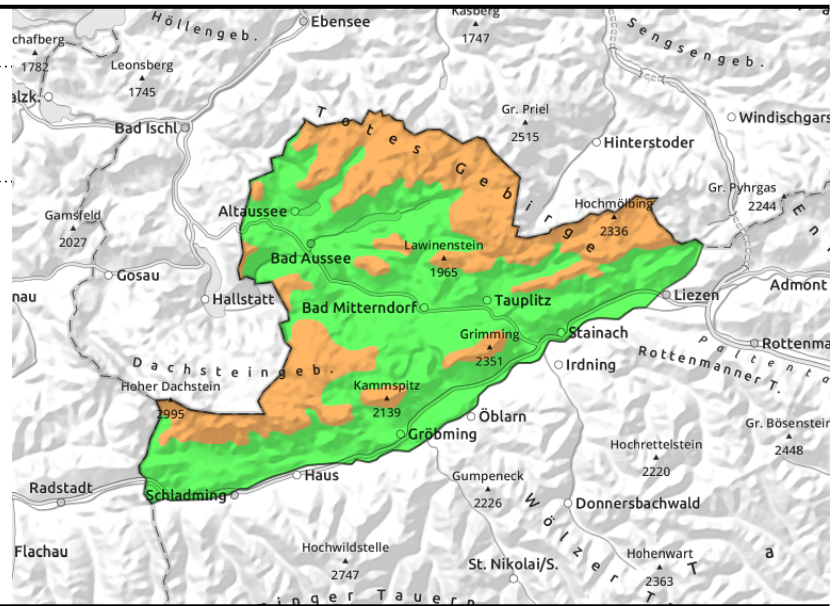
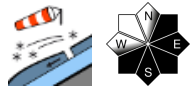
### Danger ratings



### Expositions



**Dachsteingebiet, Totes Gebirge**



**Since Tuesday in E/S aspects, new snowdrift generation at high altitudes that cover older drifts**

On Tuesday, sunny weather and mild temperatures helped the snowpack to settle esp. on sunny slopes. At high altitudes, particularly in the leeward slopes of E/S aspects avalanche danger remains considerable, triggering a slab avalanches is possible even by the weight of one sole skier on steep slopes. At low altitudes, on the other hand, danger is low.

**Snowpack structure**

Due to stormy winds in recent days the fresh snow has been distributed in highly varied ways. In Totes Gebirge there is more than a metre of new snow, exposed terrain is either windblown or hard-compressed. Snowpack layering is quite unfavorable: atop an encrusted old-snow fundament, often blanketed with surface hoar, cold and loose new snow was deposited. With further precipitation, heavier snow landed atop this layer in all aspects, and became increasingly prone to triggering. In shady terrain, more deeply embedded layers are inadequately structured, apart from the snowdrift problem there is also a persistent weak layer which threatens.

**Weather**

The Eastern Alps are caught between a high over the Atlantic and a NE air current. From the west, high-pressure conditions are coming.. Styria is divided in two: west and southwest are bathed in sunshine; the eastern massifs still endure a moist-cold climate and low lying clouds. Temperatures in the northwestern massifs will reach -4 degrees at 2000 m; -2 degrees at 1500 m in the southwest at -2 to +2 degrees, in the furthest eastern regions the moist-cold ground layer has an impact on air temperature: at 1500 m: -4 degrees. In exposed terrain, strong NW winds, 70 km/hr.

On Thursday, high-pressure conditions will falter, clouds will slowly move in, become heavier by evening. Still, some sunshine is expected.

**Outlook**

Due to lower temperatures, settling is slowed, but conditions will persist.

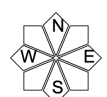
**Avalanche problems**



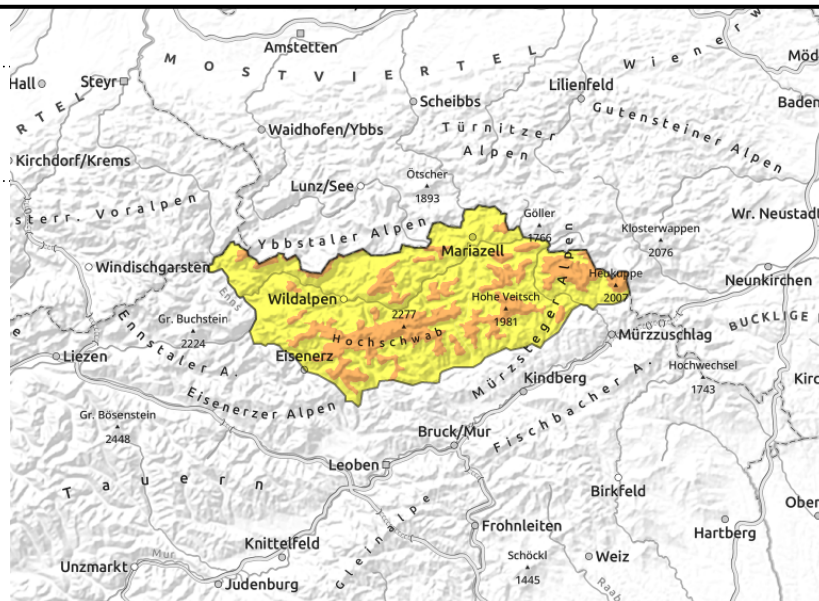
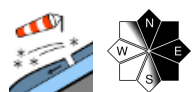
**Danger ratings**



**Expositions**



**Hochschwabgebiet, Mürzsteger Alpen**



**trigger-sensitive snowdrifts at high altitudes, esp.in E/S aspects, in shady terrain to below the treeline**

On Tuesday, sunny weather and mild temperatures will help the snowpack to settle. At high altitudes, esp. in leeward slopes in E/S aspects, danger will remain considerable, triggering a slab on steep slopes is possible even by minimum additional loading. On shady slopes the danger of a slab releasing even at low altitudes is still current, danger is moderate. Wind-loaded slopes on steep forested slopes and in clearances are meant.

**Snowpack structure**

Due to stormy winds in recent days the fresh snow has been distributed in highly varied ways. In Totes Gebirge there is more than a metre of new snow, exposed terrain is either windblown or hard-compressed. Snowpack layering is quite unfavorable: atop an encrusted old-snow fundament, often blanketed with surface hoar, cold and loose new snow was deposited. With further precipitation, heavier snow landed atop this layer in all aspects, and became increasingly prone to triggering. In shady terrain, more deeply embedded layers are inadequately structured, apart from the snowdrift problem there is also a persistent weak layer which threatens.

**Weather**

The Eastern Alps are caught between a high over the Atlantic and a NE air current. From the west, high-pressure conditions are coming.. Styria is divided in two: west and southwest are bathed in sunshine; the eastern massifs still endure a moist-cold climate and low lying clouds. Temperatures in the northwestern massifs will reach -4 degrees at 2000 m; -2 degrees at 1500 m in the southwest at -2 to +2 degrees, in the furthest eastern regions the moist-cold ground layer has an impact on air temperature: at 1500 m: -4 degrees. In exposed terrain, strong NW winds, 70 km/hr.

On Thursday, high-pressure conditions will falter, clouds will slowly move in, become heavier by evening. Still, some sunshine is expected.

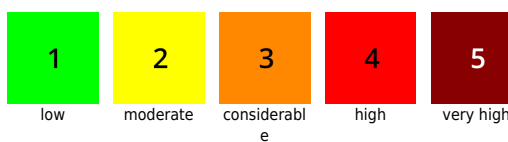
**Outlook**

Due to lower temperatures, settling is slowed, but conditions will persist.

**Avalanche problems**



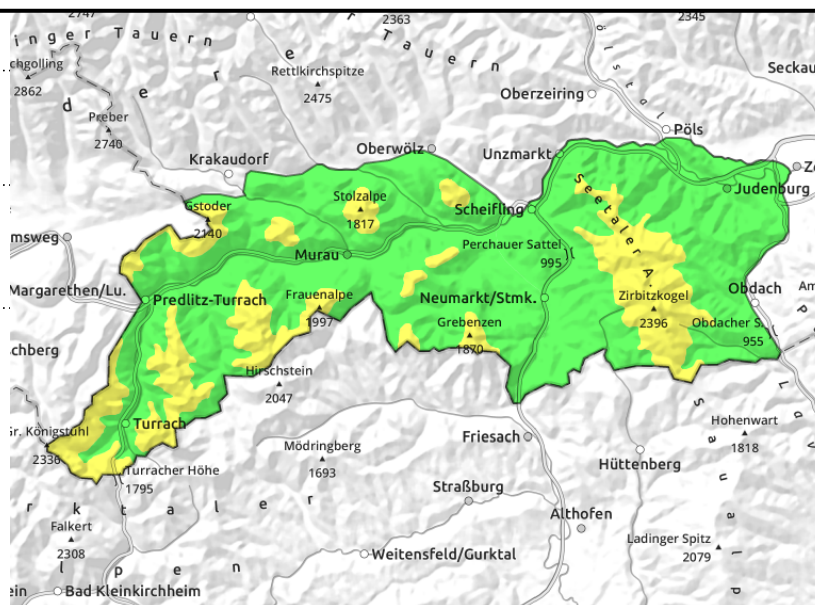
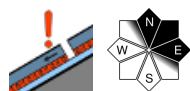
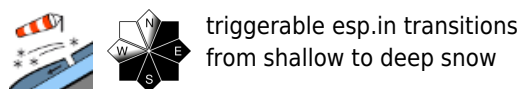
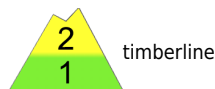
**Danger ratings**



**Expositions**



**Gurktaler Alpen, Seetaler Alpen**



**Apart from last week's older drifts, further drifts are being generated**

Avalanche focus lies in the regions of northern Upper Styria where snowfall has been heaviest. But the fresh snowdrift accumulations on the southern flank of the Alps should not be ignored, even though the amounts of new snow were minor. Most of the drifts were deposited on E/S aspects, thus the danger is set at moderate. Even minimum additional loading can trigger avalanches. Particularly the transitions from shallow to deep snow require caution.

**Snowpack structure**

Since Saturday, snowdrifts have been deposited atop a hardened, often surface-hoar covered snowpack surface. Since Tuesday, intensifying NW winds have come up repeatedly. The old snowpack beneath the drifts was able to settle well, only at high altitudes are there faceted layers which weaken it. Otherwise the snowpack is generally wind-pressed or icy.

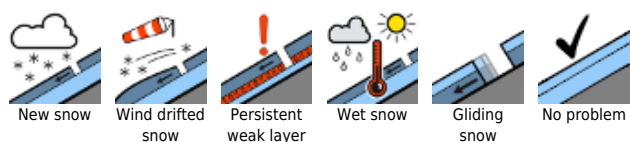
**Weather**

The Eastern Alps are caught between a high over the Atlantic and a NE air current. From the west, high-pressure conditions are coming. Styria is divided in two: west and southwest are bathed in sunshine; the eastern massifs still endure a moist-cold climate and low lying clouds. Temperatures in the northwestern massifs will reach -4 degrees at 2000 m; -2 degrees at 1500 m in the southwest at -2 to +2 degrees, in the furthestmost eastern regions the moist-cold ground layer has an impact on air temperature: at 1500 m: -4 degrees. In exposed terrain, strong NW winds, 70 km/hr. On Thursday, high-pressure conditions will falter, clouds will slowly move in, become heavier by evening. Still, some sunshine is expected.

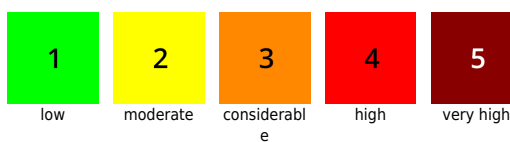
**Outlook**

Due to lower temperatures, settling is slowed, but conditions will persist.

**Avalanche problems**



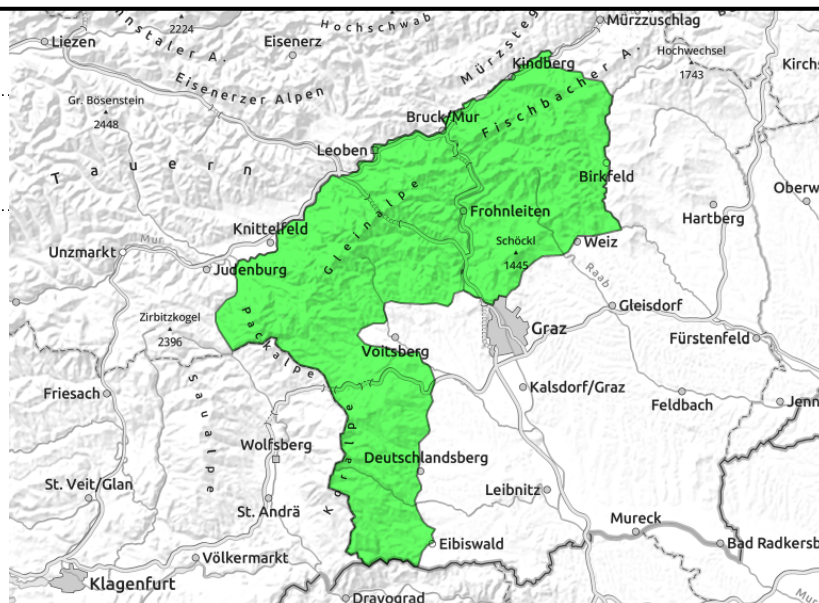
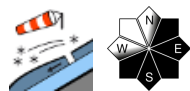
**Danger ratings**



**Expositions**



**Koralpe, Stub- und Gleinalpe, Westliche Fischbacher Alpen und Grazer Bergland**



**Heed snowdrift patches**

From Koralpe to Wechsel region, low avalanche danger prevails. Nevertheless at high altitudes those zones deserve high attentiveness which have had fresh snow and newly generated snowdrifts over the last week. The snowdrift patches can trigger a small slab avalanche in isolated cases.

**Snowpack structure**

Between Koralpe and Wechsel region the snowfall until now has been minor. Some new snow was registered last week in the Fischbacher and Mürztaler Alps, and the Gleinalpe. Due to permanently strong winds, plateaus were windblown and some snowdrift patches were generated which now cover softer layers or surface hoar.

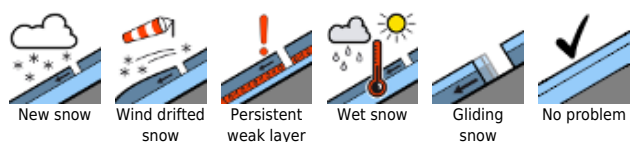
**Weather**

The Eastern Alps are caught between a high over the Atlantic and a NE air current. From the west, high-pressure conditions are coming.. Styria is divided in two: west and southwest are bathed in sunshine; the eastern massifs still endure a moist-cold climate and low lying clouds. Temperatures in the northwestern massifs will reach -4 degrees at 2000 m; -2 degrees at 1500 m in the southwest at -2 to +2 degrees, in the furthest eastern regions the moist-cold ground layer has an impact on air temperature: at 1500 m: -4 degrees. In exposed terrain, strong NW winds, 70 km/hr. On Thursday, high-pressure conditions will falter, clouds will slowly move in, become heavier by evening. Still, some sunshine is expected.

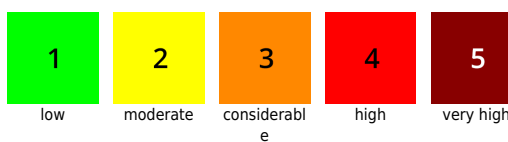
**Outlook**

Hardly any change is expected in the current snow and avalanche situation.

**Avalanche problems**



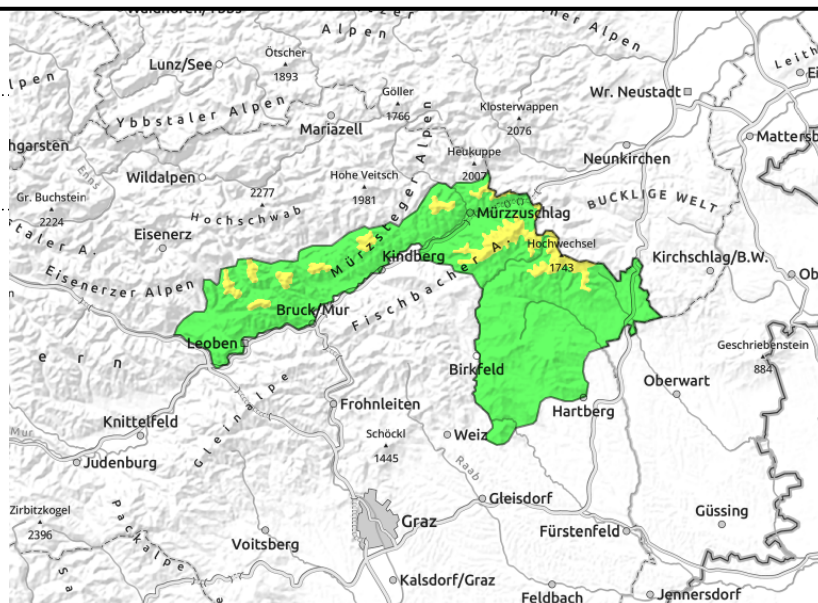
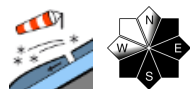
**Danger ratings**



**Expositions**



**Mürztaler Alpen, Östliche Fischbacher Alpen und Wechselgebiet**



**Heed fresh snowdrifts**

In the western Fischbacher and Mürztaler Alps, danger above the treeline is moderate. Caution urged on slopes where fresh snow and wind impact have generated new drifts which can in isolated cases trigger a small slab. Wind-loaded slopes are mostly in E/S/W aspects. Caution urged below cornices and in transitions from shallow to deeper snow.

**Snowpack structure**

Some fresh snow was registered last week in the Fischbacher and Mürztaler Alps. Due to ongoing strong winds windblown plateaus have been created, on leeward slopes there were fresh drifts generated which now blanket soft layers or surface hoar. Intensifying NW winds as of Tuesday will generate new snowdrift patches above the treeline.

**Weather**

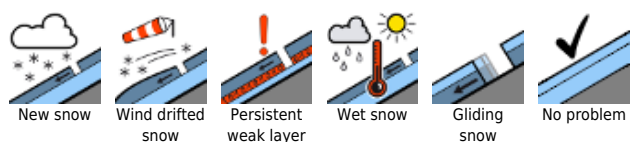
The Eastern Alps are caught between a high over the Atlantic and a NE air current. From the west, high-pressure conditions are coming.. Styria is divided in two: west and southwest are bathed in sunshine; the eastern massifs still endure a moist-cold climate and low lying clouds. Temperatures in the northwestern massifs will reach -4 degrees at 2000 m; -2 degrees at 1500 m in the southwest at -2 to +2 degrees, in the furthest eastern regions the moist-cold ground layer has an impact on air temperature: at 1500 m: -4 degrees. In exposed terrain, strong NW winds, 70 km/hr.

On Thursday, high-pressure conditions will falter, clouds will slowly move in, become heavier by evening. Still, some sunshine is expected.

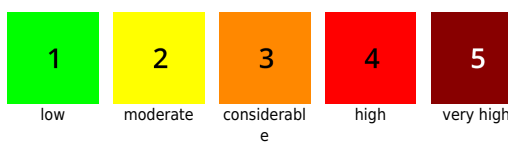
**Outlook**

Hardly any change is expected in the current snow and avalanche situation.

**Avalanche problems**



**Danger ratings**

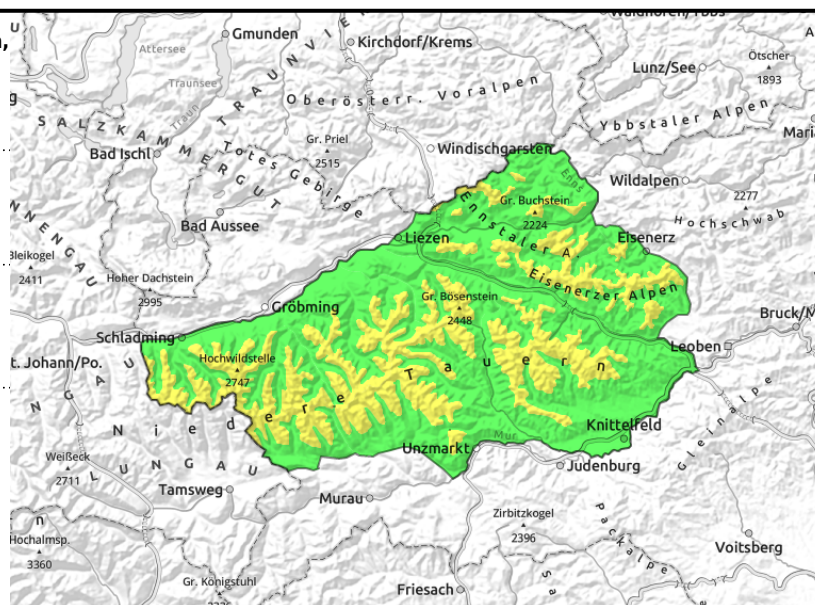
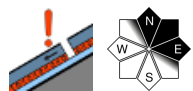
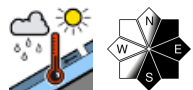


**Expositions**



**26.01.2022**

**Schladinger Tauern Nord, Nördliche Wölzer Tauern, Rottenmanner Tauern, Ennstaler Alpen, Eisenerzer Alpen, Seckauer Tauern, Südliche Wölzer Tauern, Schladinger Tauern Süd**



**Since Tuesday in E/S aspects, new snowdrift generation at high altitudes that cover older drifts**

On Tuesday, sunny weather and mild temperatures helped the snowpack to settle esp. on sunny slopes. At high altitudes, particularly in the leeward slopes of E/S aspects avalanche danger remains considerable, triggering a slab avalanches is possible even by the weight of one sole skier on steep slopes. At low altitudes, on the other hand, danger is low.

**Snowpack structure**

Due to stormy winds in recent days the fresh snow has been distributed in highly varied ways. On the northern flank of the Tauern there is up to 40 cm of new snow, less on the southern flank. Exposed terrain is either windblown or hard-compressed. Snowpack layering is quite unfavorable: atop an encrusted old-snow fundament, often blanketed with surface hoar, cold and loose new snow was deposited. With further precipitation, heavier snow landed atop this layer in all aspects, and became increasingly prone to triggering. In shady terrain, more deeply embedded layers are inadequately structured, apart from the snowdrift problem there is also a persistent weak layer which threatens.

**Weather**

The Eastern Alps are caught between a high over the Atlantic and a NE air current. From the west, high-pressure conditions are coming.. Styria is divided in two: west and southwest are bathed in sunshine; the eastern massifs still endure a moist-cold climate and low lying clouds. Temperatures in the northwestern massifs will reach -4 degrees at 2000 m; -2 degrees at 1500 m in the southwest at -2 to +2 degrees, in the furthestmost eastern regions the moist-cold ground layer has an impact on air temperature: at 1500 m: -4 degrees. In exposed terrain, strong NW winds, 70 km/hr.

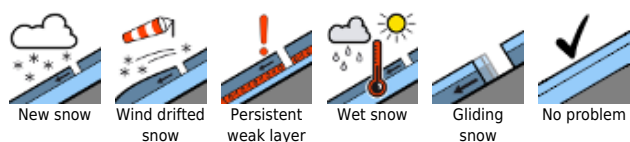
On Thursday, high-pressure conditions will falter, clouds will slowly move in, become heavier by evening. Still, some sunshine is expected.

**Outlook**

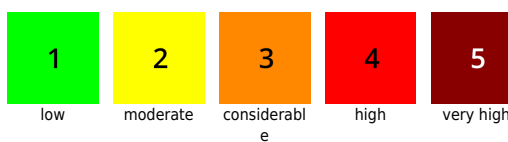
Due to lower temperatures, settling is slowed, but conditions will persist.

Translated by Jeffrey McCabe, [www.creativtrans.com](http://www.creativtrans.com)

**Avalanche problems**



**Danger ratings**



**Expositions**

