
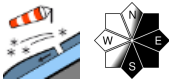

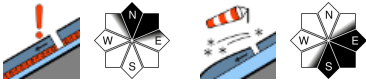

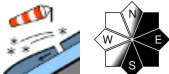


## UPDATE: CONSIDERABLE avalanche danger in northern barrier cloud regions. Fresh snowdrifts.

	<p>forestline</p>	<p>Mürzsteger Alpen, Hochschwabgebiet, Eisenerzer Alpen, Ennstaler Alpen, Rottenmanner Tauern, Südliche Wölzer Tauern, Nördliche Wölzer Tauern, Seckauer Tauern, Schladminger Tauern Süd</p>	
	<p>forestline</p>	<p>Stub- und Gleinalpe, Koralpe, Westliche Fischbacher Alpen und Grazer Bergland, Östliche Fischbacher Alpen und Wechselgebiet, Seetaler Alpen, Gurktaler Alpen, Mürtzaler Alpen</p>	
	<p>forestline</p>	<p>Schladminger Tauern Nord, Dachsteingebiet, Totes Gebirge</p>	

### Avalanche problems



### Danger ratings

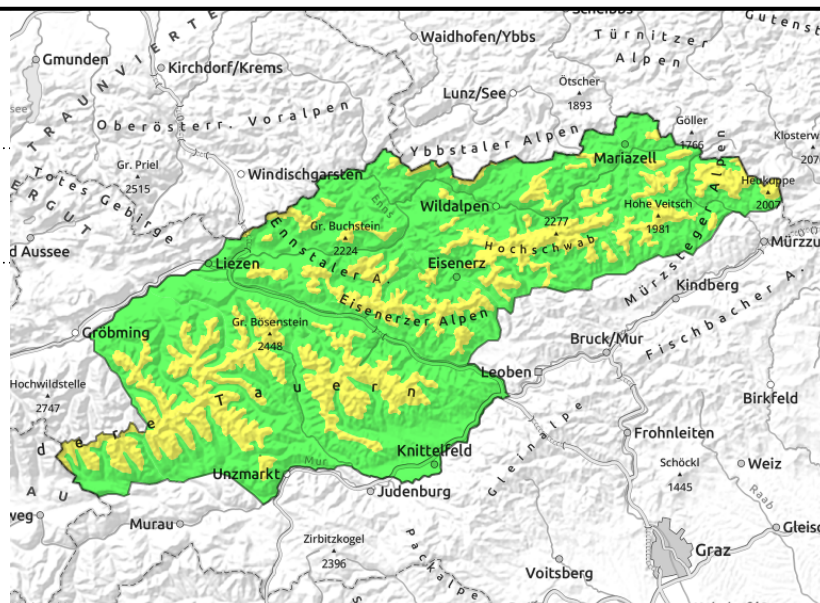
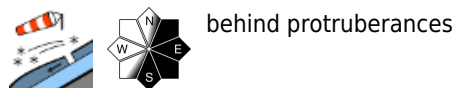


### Expositions



**21.01.2022**

**Mürzsteiger Alpen, Hochschwabgebiet, Eisenerzer Alpen, Ennstaler Alpen, Rottenmanner Tauern, Südliche Wölzer Tauern, Nördliche Wölzer Tauern, Seckauer Tauern, Schladminger Tauern Süd**



## Cold, fresh snowdrift accumulations

Avalanche danger in Niedere Tauern and Hochschwab region is moderate above the timberline. Storm-strength winds plus fresh snow are leading to massive snow transport. Caution urged particularly in N/E/S aspects, where slabs can be triggered even by minimum additional loading.

### Snowpack structure

In the last 24 hours between Dachstein and Hochschwab there has been 20 cm of fresh snow registered. In the Niedere Tauern the amounts were smaller. The fresh snow and fresh drifts now blanket surface hoar in wind-protected zones, or soft layers. A further potential weak layer lies inside the drifts themselves. The old snowpack is often riddled with faceted crystals surrounding melt-freeze crusts: these are weak layers.

### Weather

From Dachstein to Hochschwab, repeated bouts of snowfall (10-20 cm of fresh snow expected, locally more). Some interim pauses are expected, even a bit of sunshine is possible. but towards midday the snowfall will set in once again.

### Outlook

Between Dachstein and Wechsel region it will snow all day long. In the focal points between Auserer and Mariazeller Land there could be 40-50 cm of fresh snow, more from place to place. South of the Niedere Tauern there will be less snowfall, least of all in the Koralm region (only 5 cm). Avalanche danger levels will increase to "considerable." Naturally triggered avalanches can be expected on Saturday.

#### Avalanche problems



#### Danger ratings



#### Expositions



**21.01.2022**

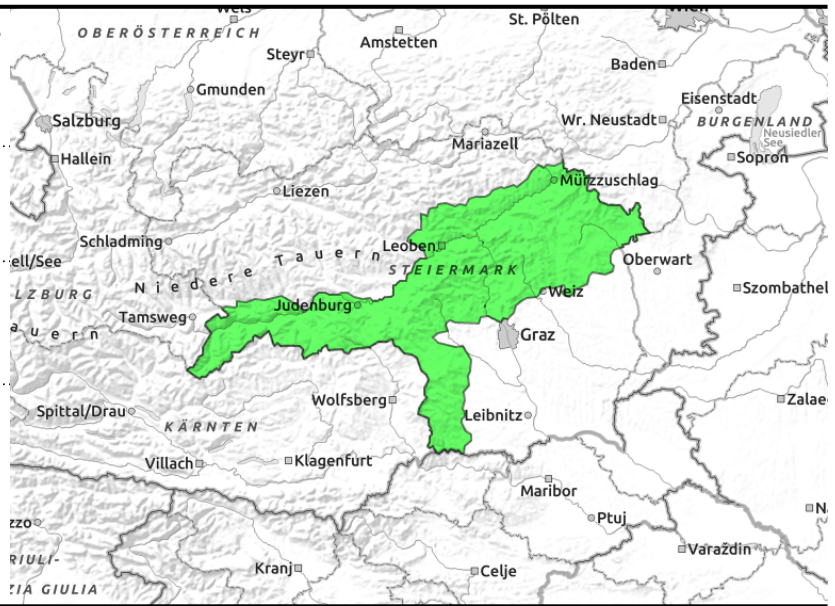
**Stub- und Gleinalpe, Koralpe, Westliche Fischbacher Alpen und Grazer Bergland, Östliche Fischbacher Alpen und Wechselgebiet, Seetaler Alpen, Gurktaler Alpen, Mürztaler Alpen**



on north-facing slopes



near ridgelines



**Caution on north-facing slopes: persistent weak layer. Local snowdrift accumulations in E/S aspects.**

Avalanche danger south of Mur and Mürz Rift is low. Isolated danger zones are located on extremely steep slopes in northern aspects. Older snowdrift accumulations can be triggered by large additional loading.

Due to rising NW winds, small snowdrift patches can form on east-facing and south-facing slopes. Caution near ridgelines!

**Snowpack structure**

The snowpack was able to settle. The old snowpack at high altitudes is being weakened by faceted crystals near melt-freeze crusts. Elsewhere the snowpack is hard and icy. Some snowdrifts have been deposited atop a hardened surface and/or surface hoar at high altitudes.

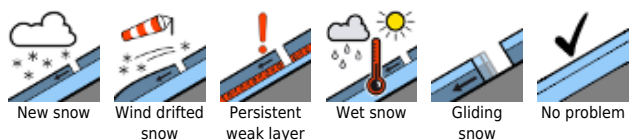
**Weather**

The NW air current will persist. South of the Niedere Tauern there will be less snow than in the Northern Alps. Northern foehn wind will make it sunnier here. Temperature at midday at 2000 m: -14 degrees. The NW winds will reach speeds of 80-110 km/hr in exposed terrain.

**Outlook**

South of the Niedere Tauern on Saturday there will be less snowfall, least of all in the Koralalm region (only 5 cm). A slight rise in avalanche danger levels is expected in the Gurktal and Seetal Alps.

**Avalanche problems**



**Danger ratings**

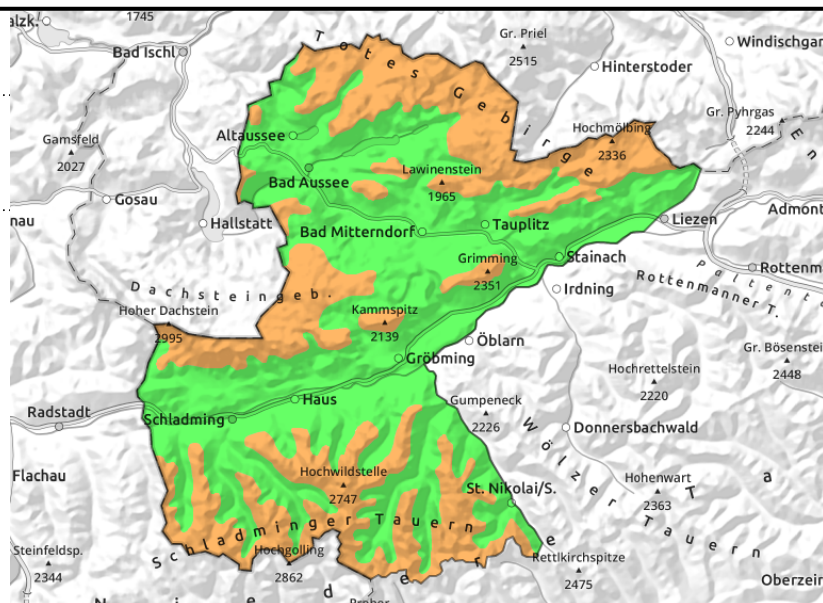
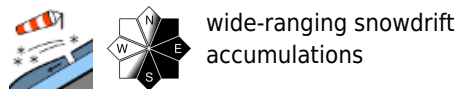


**Expositions**



**21.01.2022**

**Schladminger Tauern Nord, Dachsteingebiet, Totes Gebirge**



**Cold fresh snowdrifts!**

Avalanche danger in Schladminger Tauern, Dachstein region and Totes Gebirge is considerable above the treeline. Stormy winds and fresh snow have led to massive snow transport. Caution urged particularly in N/E/S aspects, where slabs can be triggered even by minimum additional loading.

**Snowpack structure**

In the northern barrier cloud regions up to 50 cm of fresh snow has been registered. The new snow and fresh drifts now blanket surface hoar and/or soft layers in wind-protected terrain. A further potential weak layer could form inside the drifts themselves. The old snowpack is often weakened by faceted crystals surrounding weak layers: this constitutes a weak layer.

**Weather**

As of the morning there can be pauses in precipitation in the Northern Alps, even a bit of sunshine is possible. This afternoon between Dachstein and Mürzsteger Alps, widespread snowfall will set in, subsequently intensify on Friday night. A storm-strength NW wind will reach speeds of 80-120 km/hr.

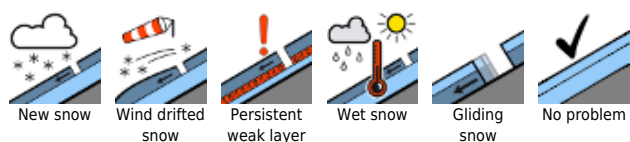
**Outlook**

Between Dachstein and Wechsel region it will snow all day long. In the focal points between Auserer and Mariazeller Land there could be 40-50 cm of fresh snow, more from place to place. South of the Niedere Tauern there will be less snowfall, least of all in the Koralm region (only 5 cm).

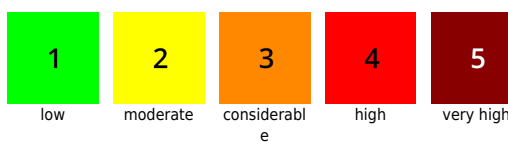
Naturally triggered avalanches can be expected on Saturday.

Translated by Jeffrey McCabe, [www.creativtrans.com](http://www.creativtrans.com)

**Avalanche problems**



**Danger ratings**



**Expositions**

