

## Fresh snowdrift accumulations in Northern Alps



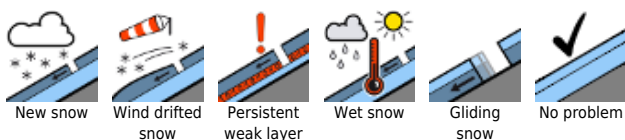
timberline  
Nördliche Wölzer Tauern, Rottenmann Tauern, Südliche Wölzer Tauern, Dachsteingebiet, Mürtzsteiger Alpen, Hochschwabgebiet, Eisenerzer Alpen, Ennstaler Alpen, Totes Gebirge, Schladminger Tauern Süd, Schladminger Tauern Nord, Seckauer Tauern



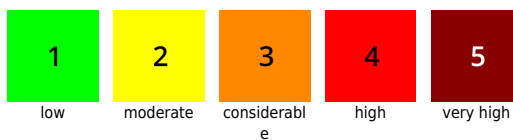
Stub- und Gleinalpe, Koralpe, Westliche Fischbacher Alpen und Grazer Bergland, Östliche Fischbacher Alpen und Wechselgebiet, Seetaler Alpen, Gurktaler Alpen, Mürtztaler Alpen



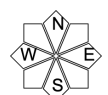
### Avalanche problems



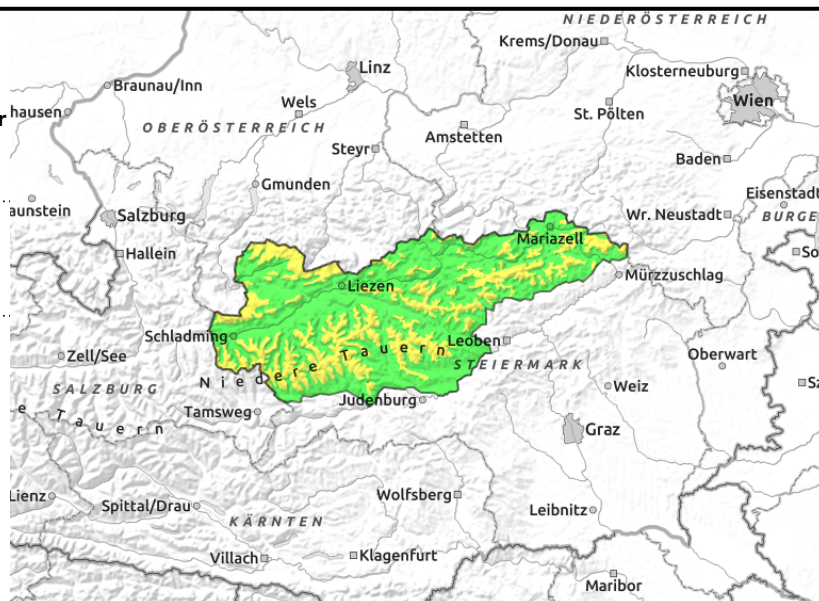
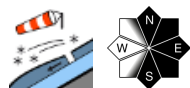
### Danger ratings



### Expositions



**Nördliche Wölzer Tauern, Rottenmanner Tauern, Südliche Wölzer Tauern, Dachsteingebiet, Mürzsteiger Alpen, Hochschwabgebiet, Eisenerzer Alpen, Ennstaler Alpen, Totes Gebirge, Schladminger Tauern Süd, Schladminger Tauern Nord, Seckauer Tauern**



## Cold, fresh snowdrifts

Avalanche danger in the Northern Alps, Niedere Tauern and Hochschwab region is moderate above the treeline. Cold fresh snow and storm winds are making danger zones more frequent above the treeline. Caution in N/E/S aspects: slab avalanches can be triggered even by minimum additional loading, and fracture down to older weak layers.

## Snowpack structure

The fresh snow and fresh drifts blanket surface hoar. The old snowpack at high altitudes is often faceted, further weakened by intermediate melt-freeze layers. Below the treeline the snowfall will often fall on top of an expansively metamorphosed snowpack.

## Weather

Storm winds and cold in the Northern Alps and along the northern Niedere Tauern, with poor visibility and snowfall. Between 10 and 20 cm of fresh snow is anticipated. Caution: winds intensifying more every hour. From Niedere Tauern to Mürzsteiger Alpen, gale winds reaching more than 130 km/hr. Temperature at 2000 m: -6 degrees.

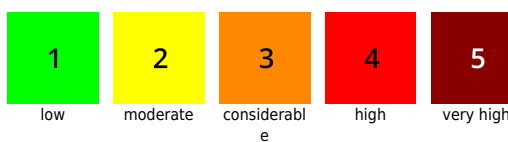
## Outlook

No significant change in avalanche danger levels is expected.

### Avalanche problems



### Danger ratings

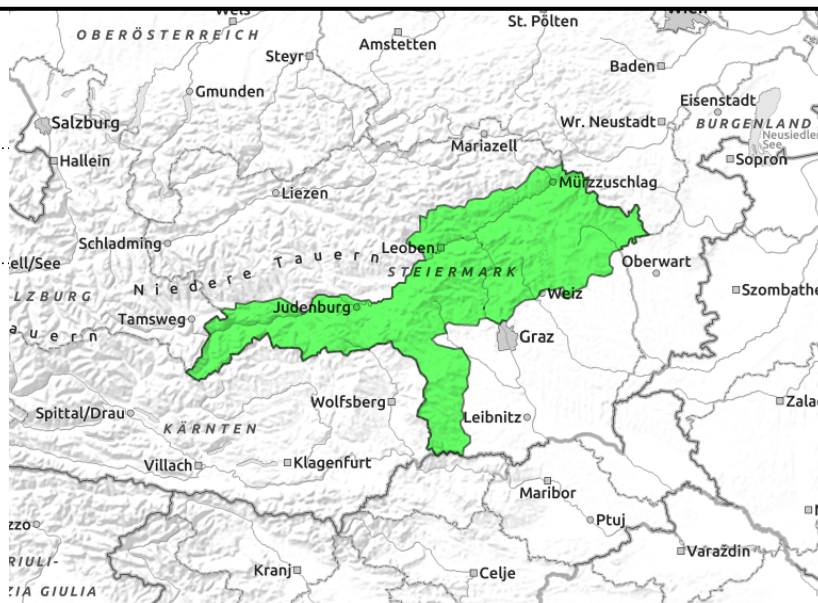
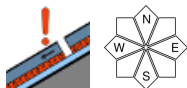


### Expositions



**17.01.2022**

Stub- und Gleinalpe, Koralpe, Westliche Fischbacher Alpen und Grazer Bergland, Östliche Fischbacher Alpen und Wechselgebiet, Seetaler Alpen, Gurktaler Alpen, Mürztaler Alpen



## Caution in northern aspects: persistent weak layer

Isolated danger zones are located on extremely steep north-facing slopes. Older snowdrifts can trigger by large additional loading.

### Snowpack structure

The snowpack was able to settle over the last few days. The old snowpack at high altitude is often riddled with faceted crystals and melt-freeze layers, thus is weakened. Otherwise the snowpack is hardened or icy.

### Weather

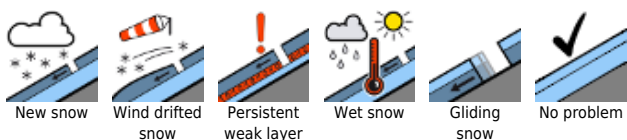
On the southern flank of the Alps, hardly any precipitation is anticipated, some sunshine due to northerly foehn wind can be expected. Cloudbanks will pass through. Caution: winds are intensifying by the hour. At high altitudes, gale winds reaching more than 130 km/hr. Temperature at 2000 m: -6 degrees.

### Outlook

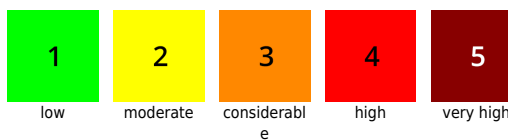
No significant change in avalanche danger levels is expected.

Translated by Jeffrey McCabe, [www.creativtrans.com](http://www.creativtrans.com)

#### Avalanche problems



#### Danger ratings



#### Expositions

