







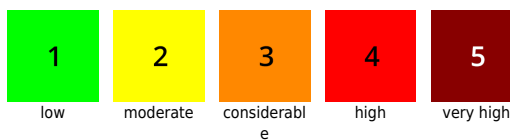
Pleasant mountain weather, lots of sun, easing winds, heed snowdrifts and old snow at high altitude

	<p>forestline Dachsteingebiet, Totes Gebirge, Ennstaler Alpen, Eisenerzer Alpen, Hochschwabgebiet</p>	
	<p>timberline Schladminger Tauern Nord, Nördliche Wölzer Tauern, Rottenmanner Tauern, Seckauer Tauern, Südliche Wölzer Tauern, Schladminger Tauern Süd, Seetaler Alpen, Stub- und Gleinalpe, Koralpe, Gurktaler Alpen</p>	
	<p>Mürztaler Alpen, Westliche Fischbacher Alpen und Grazer Bergland, Östliche Fischbacher Alpen und Wechselgebiet, Mürzsteger Alpen</p>	

Avalanche problems



Danger ratings



Expositions

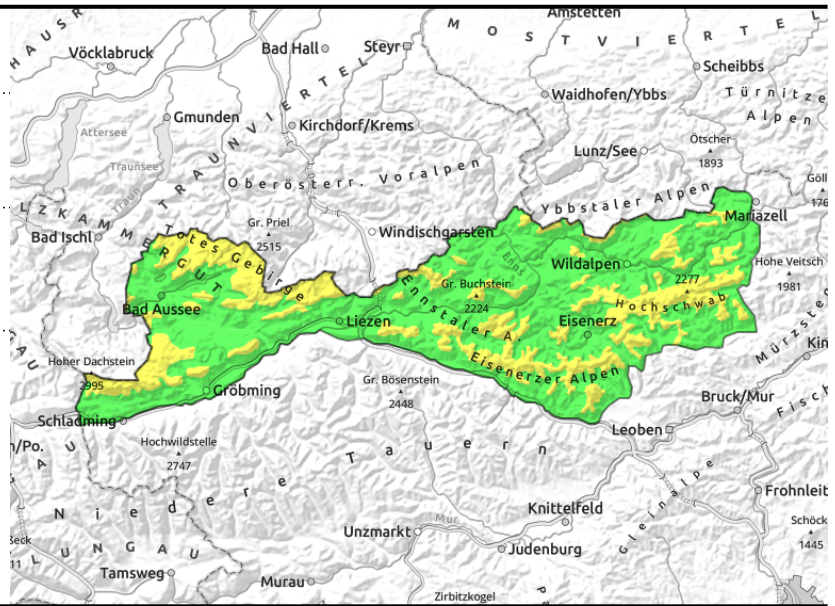
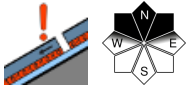
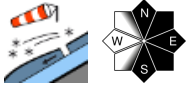


15.01.2022

Dachsteingebiet, Totes Gebirge, Ennstaler Alpen, Eisenerzer Alpen, Hochschwabgebiet



forestline



Moderate danger prevails at high altitudes

At higher altitudes the avalanche danger is moderate. Older and, to some extent, small and fresh prone-to-triggering drifts are found in N/E aspects generally near ridgelines, in gullies and bowls. A slab avalanche can be triggered in isolated cases by the weight of one sole skier, more often by large additional loading.

Snowpack structure

Wind impact has been strong recently, exposed zones are windblown, cavities filled with drifts. Drifts have been generated in several rounds, most often are prone to triggering where they blanket surface hoar. These intermediate layers can occur both inside the drifts and in transitions to the melt-freeze encrusted old snow. The old snowpack itself is weakened by faceted crystals.

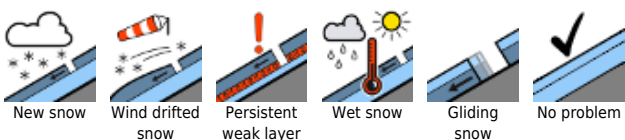
Weather

In the NE massifs (Mürzsteger Alps into Wechsel region) some foglike cloud may prevail in the early part of the day, elsewhere unimpaired sunshine awaits us on Saturday. In early morning, still strong NW winds, easing during the daytime to light-to-moderate strength. Temperatures at 1500 m: +3 degrees; at 2000 m: +1 degree.

Outlook

Sunday will be rather sunny, only thin, harmless cloudbanks. During the day, the NW winds will intensify noticeably, reach storm strength. Temperatures will begin to drop. Some fresh snow is expected at the beginning of next week, focus in the northern barrier cloud regions, with wind influence. Thus, avalanche danger can be expected to increase again.

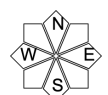
Avalanche problems



Danger ratings

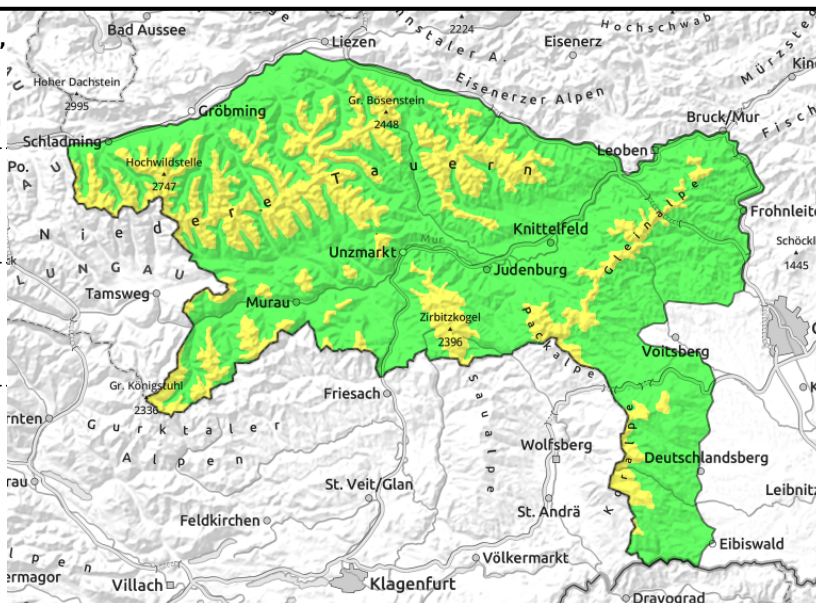
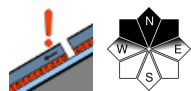
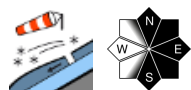
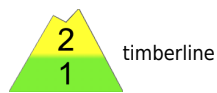


Expositions



15.01.2022

Schladminger Tauern Nord, Nördliche Wölzer Tauern, Rottenmanner Tauern, Seckauer Tauern, Südliche Wölzer Tauern, Schladminger Tauern Süd, Seetaler Alpen, Stub- und Gleinalpe, Koralpe, Gurktaler Alpen



Moderate danger at high altitudes

At higher altitudes, moderate danger prevails, elsewhere danger is low. Older and small-fresh snowdrift accumulations in extended southern aspects, in ridgeline terrain, gullies and bowls. By mostly large additional loading, a slab avalanche could be triggered.

Snowpack structure

Wind impact has been strong recently, exposed zones are windblown, cavities filled with drifts. Drifts have been generated in several rounds, most often are prone to triggering where they blanket surface hoar. These intermediate layers can occur both inside the drifts and in transitions to the melt-freeze encrusted old snow. The old snowpack itself is weakened by faceted crystals.

Weather

In the NE massifs (Mürzsteger Alps into Wechsel region) some foglike cloud may prevail in the early part of the day, elsewhere unimpaired sunshine awaits us on Saturday. In early morning, still strong NW winds, easing during the daytime to light-to-moderate strength. Temperatures at 1500 m: +3 degrees; at 2000 m: +1 degree.

Outlook

Sunday will be rather sunny, only thin, harmless cloudbanks. During the day, the NW winds will intensify noticeably, reach storm strength. Temperatures will begin to drop. Some fresh snow is expected at the beginning of next week, focus in the northern barrier cloud regions, with wind influence. Thus, avalanche danger can be expected to increase again.

Avalanche problems



Danger ratings

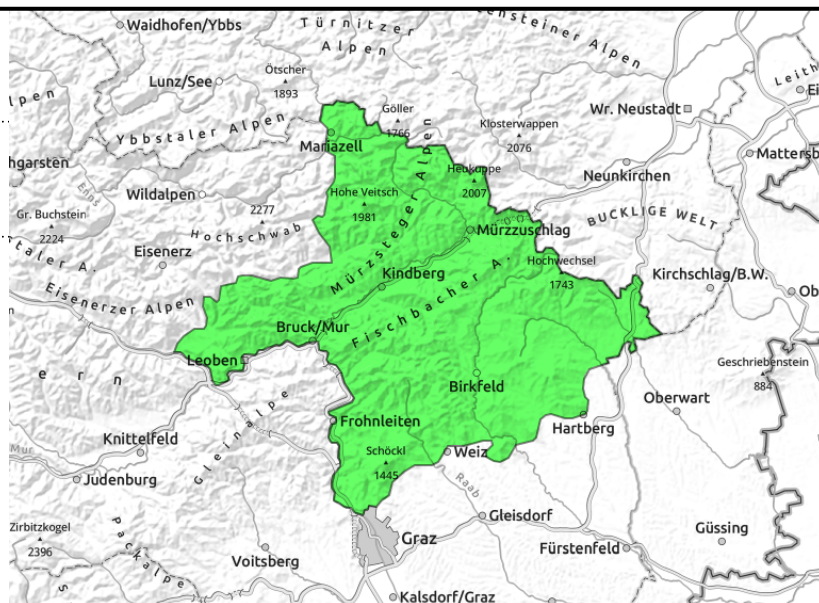
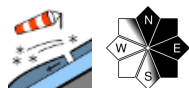


Expositions



15.01.2022

Mürztaler Alpen, Westliche Fischbacher Alpen und Grazer Bergland, Östliche Fischbacher Alpen und Wechselgebiet, Mürzsteiger Alpen



Low avalanche danger

Low avalanche danger prevails. Avalanche prone locations in the form of snowdrift accumulations occur only in rare cases at high altitude. Atop hardened, melt-freeze encrusted surfaces, the greater risk lies in taking a fall.

Snowpack structure

Thin snowdrift patches on top of melt-freeze crusts, in places atop surface hoar or on bare ground. There is generally little snow in this region.

Weather

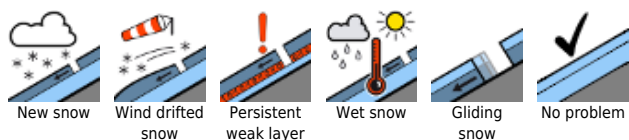
In the NE massifs (Mürzsteiger Alps into Wechsel region) some foglike cloud may prevail in the early part of the day, elsewhere unimpaired sunshine awaits us on Saturday. In early morning, still strong NW winds, easing during the daytime to light-to-moderate strength. Temperatures at 1500 m: +3 degrees; at 2000 m: +1 degree.

Outlook

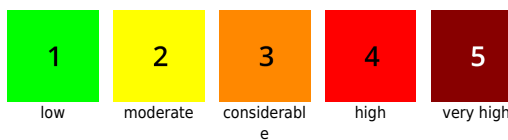
Sunday will be rather sunny, only thin, harmless cloudbanks. During the day, the NW winds will intensify noticeably, reach storm strength. Temperatures will begin to drop. Some fresh snow is expected at the beginning of next week, focus in the northern barrier cloud regions, with wind influence. Thus, avalanche danger can be expected to increase again.

Translated by Jeffrey McCabe, www.creativtrans.com

Avalanche problems



Danger ratings



Expositions

