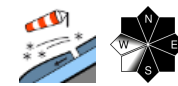


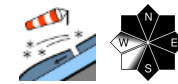
Snowfall amid wind impact in northern barrier cloud regions. Caution: high-altitude snowdrifts!



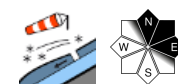
Dachsteingebiet, Totes Gebirge, Ennstaler Alpen, Hochschwabgebiet



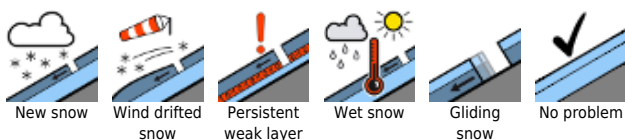
Mürzsteiger Alpen, Eisenerzer Alpen, Seckauer Tauern, Rottenmanner Tauern, Nördliche Wölzer Tauern, Schladminger Tauern Nord, Südliche Wölzer Tauern, Schladminger Tauern Süd, Gurktaler Alpen, Seetaler Alpen, Stub- und Gleinalpe, Koralpe



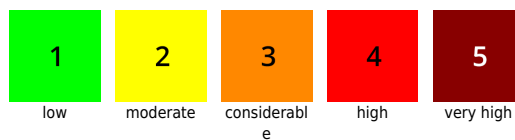
Mürztaler Alpen, Westliche Fischbacher Alpen und Grazer Bergland, Östliche Fischbacher Alpen und Wechselgebiet



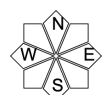
Avalanche problems



Danger ratings



Expositions

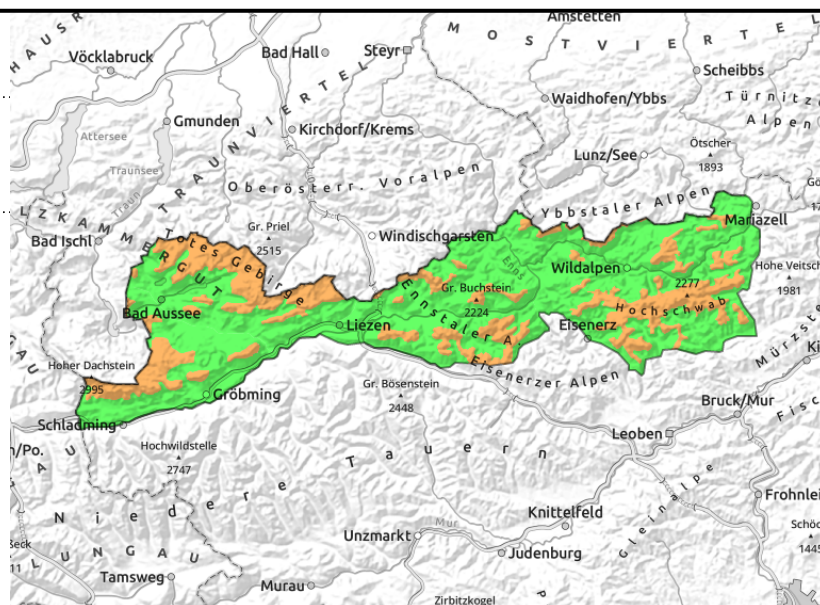
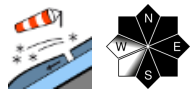


10.01.2022

Dachsteingebiet, Totes Gebirge, Ennstaler Alpen, Hochschwabgebiet



forestline



Considerable avalanche danger at high altitudes

Considerable avalanche danger prevails at high altitudes. Both older and fresher snowdrifts require high attentiveness. Avalanche prone locations are thus located mainly in N/E/S aspects in ridgeline terrain, gullies and bowls. A slab can be triggered by one sole skier. In regions where fresh snow has been heaviest, the drifts can release naturally in steep terrain. Poor visibility can be expected.

Snowpack structure

The fresh, loose snow which fell in low temperatures in the latter half of the week has been repeatedly transported by variable winds. More fresh snow (up to 20 cm, sometimes more) is expected amid wind impact, meaning snow transport is in the cards. Covered surface hoar, loose intermediate layers and transition zones to the melt-freeze encrusted old snowpack are the problems of the snowpack structure. The old snowpack itself is somewhat weakened by faceted crystals.

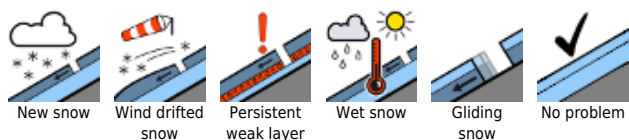
Weather

Monday will be gloomy with heavy, low lying clouds throughout Styria. Particularly in the northern barrier cloud regions (esp. Dachstein to Hochschwab region) can expect moderate but persistent snowfall. Poor visibility. Strong-to-stormy N/NW winds will be blowing. Temperature at 1500 m: -6 degrees; at 2000 m: -10 degrees.

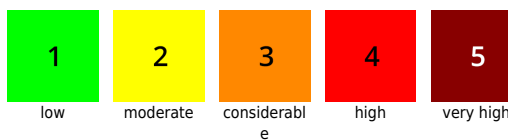
Outlook

On Tuesday conditions will improve. Residual cloud will disperse, sunshine will come to the fore. Still strong N/NE winds will be blowing. At 2000 m: -7 degrees. Snowdrift accumulations require high caution.

Avalanche problems



Danger ratings

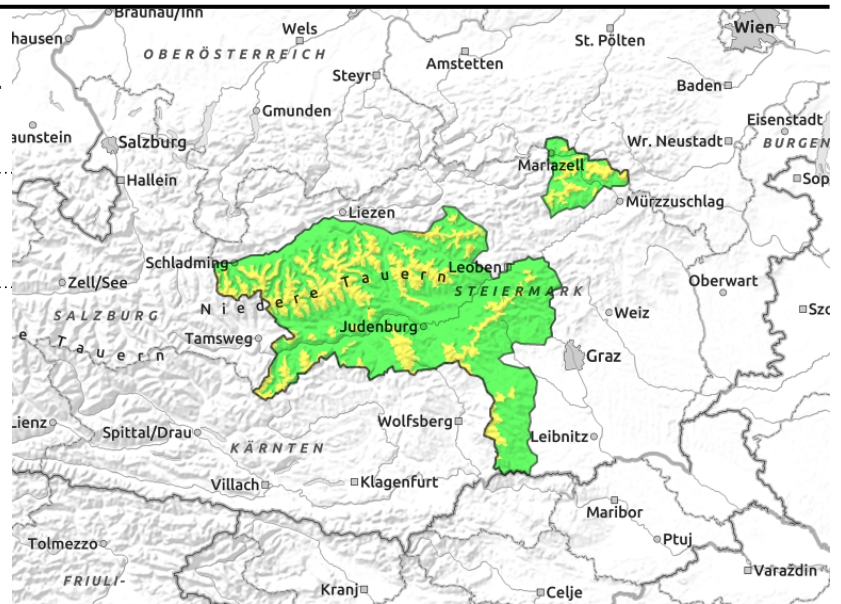
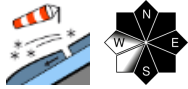


Expositions



10.01.2022

Mürzsteiger Alpen, Eisenerzer Alpen, Seckauer Tauern, Rottenmanner Tauern, Nördliche Wölzer Tauern, Schladminger Tauern Nord, Südliche Wölzer Tauern, Schladminger Tauern Süd, Gurktaler Alpen, Seetaler Alpen, Stub- und Gleinalpe, Korralpe



Moderate avalanche danger at high altitudes

Moderate avalanche danger prevails at high altitudes. Both older and fresher snowdrifts require high attentiveness. Avalanche prone locations are thus located mainly in N/E/S aspects in ridgeline terrain, gullies and bowls. A slab can be triggered by one sole skier. In regions where fresh snow has been heaviest, the drifts can release naturally in steep terrain. Poor visibility can be expected.

Snowpack structure

The fresh, loose snow which fell in low temperatures in the latter half of the week has been repeatedly transported by variable winds. More fresh snow (up to 20 cm, sometimes more) is expected amid wind impact, meaning snow transport is in the cards. Covered surface hoar, loose intermediate layers and transition zones to the melt-freeze encrusted old snowpack are the problems of the snowpack structure. The old snowpack itself is somewhat weakened by faceted crystals.

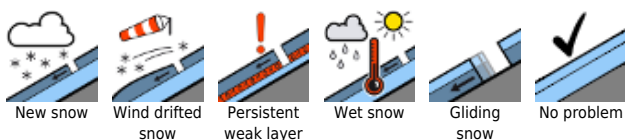
Weather

Monday will be gloomy with heavy, low lying clouds throughout Styria. Particularly in the northern barrier cloud regions (esp. Dachstein to Hochschwab region) can expect moderate but persistent snowfall. Poor visibility. Strong-to-stormy N/NW winds will be blowing. Temperature at 1500 m: -6 degrees; at 2000 m: -10 degrees.

Outlook

On Tuesday conditions will improve. Residual cloud will disperse, sunshine will come to the fore. Still strong N/NE winds will be blowing. At 2000 m: -7 degrees. Snowdrift accumulations require high caution.

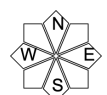
Avalanche problems



Danger ratings

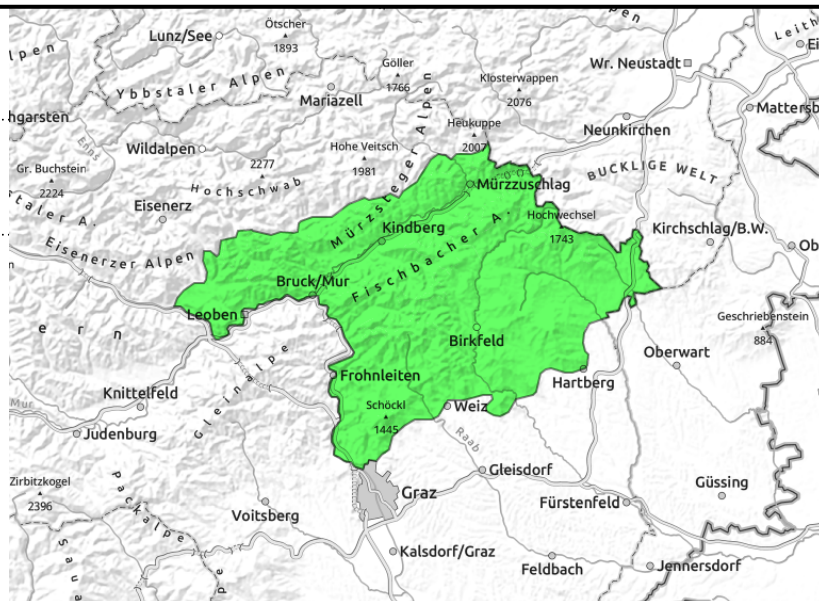
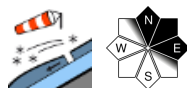


Expositions



10.01.2022

Mürztaler Alpen, Westliche Fischbacher Alpen und Grazer Bergland, Östliche Fischbacher Alpen und Wechselgebiet



Low avalanche danger at high altitudes

Low avalanche danger prevails. Some small snowdrift patches have been generated at high altitudes, otherwise exposed zones are windblown, hardened or even iced-over. In these areas there is a risk of taking a fall. Poor visibility can be expected.

Snowpack structure

As in the more recent periods of snowfall, this region will get noticeably less than in the NW, thus the generation of drifts will also be limited. These will cover hardened surfaces or bare ground.

Weather

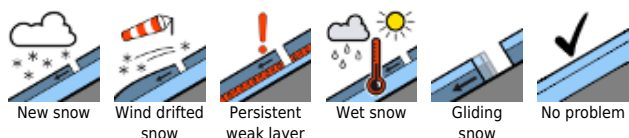
Monday will be gloomy with heavy, low lying clouds. Particularly in the northern barrier cloud regions (esp. Dachstein to Hochschwab region) can expect moderate but persistent snowfall. Poor visibility. Strong-to-stormy N/NW winds will be blowing. Temperature at 1500 m: -6 degrees; at 2000 m: -10 degrees.

Outlook

On Tuesday conditions will improve. Residual cloud will disperse, sunshine will come to the fore. Still strong N/NE winds will be blowing. At 2000 m: -7 degrees. Snowdrift accumulations require high caution.

Translated by Jeffrey McCabe, www.creativtrans.com

Avalanche problems



Danger ratings



Expositions

