
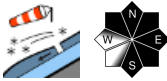

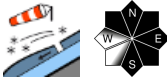

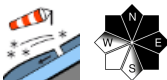


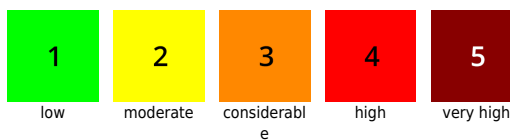
## Attention urged towards snowdrifts at high altitudes

	<p>forestline</p>	<p>Totes Gebirge, Dachsteingebiet</p>	
	<p>forestline</p>	<p>Hochschwabgebiet, Ennstaler Alpen, Rottenmanner Tauern, Nördliche Wölzer Tauern, Gurktaler Alpen, Südliche Wölzer Tauern, Schladminger Tauern Nord, Schladminger Tauern Süd, Seetaler Alpen, Seckauer Tauern, Eisenerzer Alpen, Stub- und Gleinalpe, Koralpe</p>	
	<p>forestline</p>	<p>Mürztaler Alpen, Mürztaler Alpen, Östliche Fischbacher Alpen und Wechselgebiet, Westliche Fischbacher Alpen und Grazer Bergland</p>	

### Avalanche problems



### Danger ratings

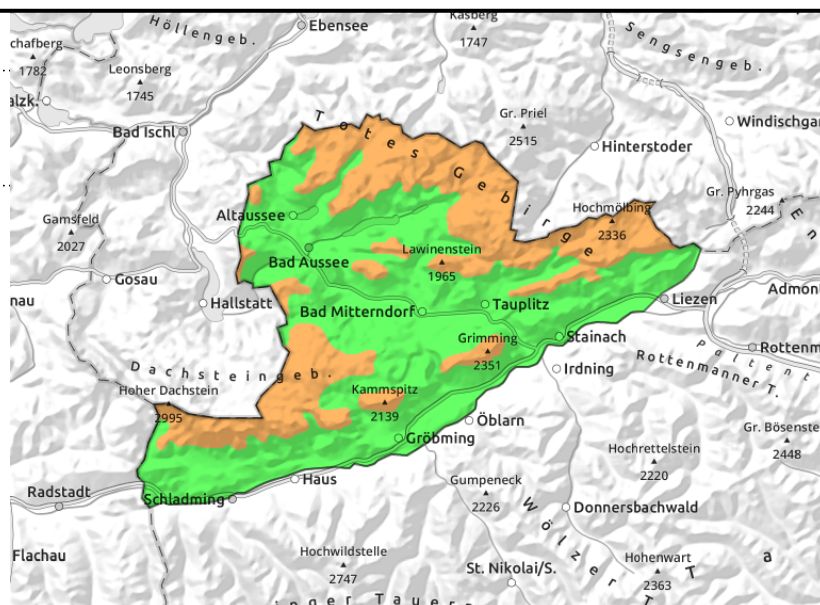
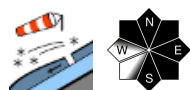


### Expositions



**09.01.2022**

**Totes Gebirge, Dachsteingebiet**



**Considerable avalanche danger at high altitude**

Considerable avalanche danger prevails at high altitudes. Due to increase snow in the latter part of the week and ongoingly shifting winds, avalanche prone snowdrift accumulations were generated. From the fresh snow and previous cold, transportable snow, new snowdrift accumulations will be generated. Danger hones in the form of wind-loaded areas are found predominantly in N/E/S aspects in gullies and bowls and generally in ridgeline terrain. Even the weight of one single skier can trigger a slab avalanche. Reduced visibility can be expected.

**Snowpack structure**

Since mid-week there has been 20 cm, in some places 30 cm of fresh snow registered; on Sunday a few additional centimetres are anticipated. Due to highly variable wind influence (regionally and locally highly variable, also variable in strength and direction) the snowdrifts are prone to triggering in the wind-impacted regions. These often blanket softer layers, sometimes surface hoar, sometimes an encrusted surface. The old snowpack itself has been weakened somewhat by faceted crystals in the vicinity of the melt-freeze crust.

**Weather**

On Saturday night, initially clear (longwave outgoing radiation), then clouds will move in and the SW winds intensify. Sunday will start with heavy cloud cover, repeated bouts of snowfall can be expected in the northern barrier cloud regions. Visibility will frequently be reduced. A strong (in summit zones stormy) NW wind will be blowing. Temperature at 1500 m: -5 degrees; at 2000 m: -8 degrees.

**Outlook**

Also on Monday, heavy cloud cover is anticipated in the northern barrier cloud regions, accompanied by snowfall. Temperature at 2000 m: -10 degrees. Stormy northerly winds. For avalanche danger, look to (and pay attention to) the snowdrift accumulations.

**Avalanche problems**



**Danger ratings**

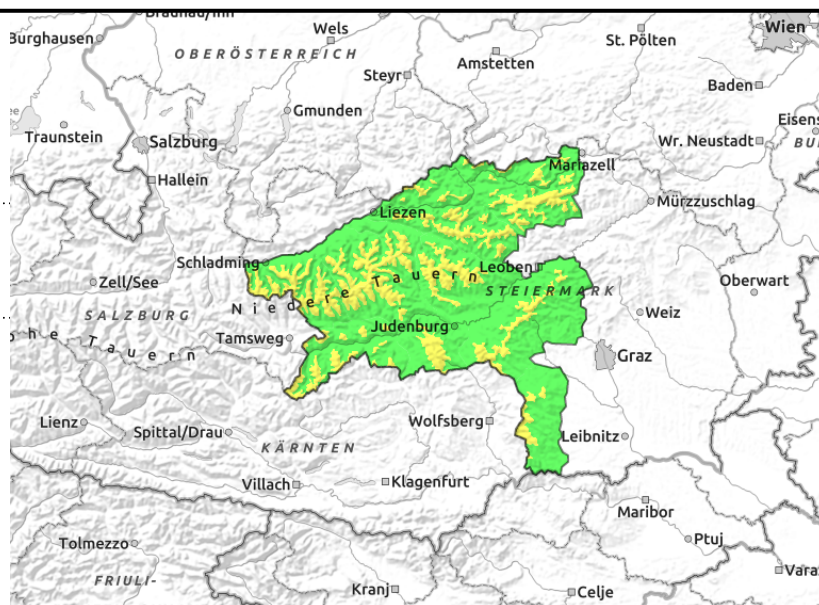
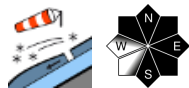


**Expositions**



**09.01.2022**

**Hochschwabgebiet, Ennstaler Alpen, Rottenmanner Tauern, Nördliche Wölzer Tauern, Gurktaler Alpen, Südliche Wölzer Tauern, Schladminger Tauern Nord, Schladminger Tauern Süd, Seetaler Alpen, Seckauer Tauern, Eisenerzer Alpen, Stub- und Gleinalpe, Koralpe**



## Moderate avalanche danger at high altitude

Moderate avalanche danger prevails at high altitudes. Due to increase snow in the latter part of the week and ongoingly shifting winds, avalanche prone snowdrift accumulations were generated. From the fresh snow and previous cold, transportable snow, new snowdrift accumulations will be generated. Danger hones in the form of wind-loaded areas are found predominantly in N/E/S aspects in gullies and bowls and generally in ridgeline terrain. Even the weight of one single skier can trigger a slab avalanche. Reduced visibility can be expected.

### Snowpack structure

Since mid-week there has been 20 cm, in some places 30 cm of fresh snow registered; on Sunday a few additional centimetres are anticipated. Due to highly variable wind influence (regionally and locally highly variable, also variable in strength and direction) the snowdrifts are prone to triggering in the wind-impacted regions. These often blanket softer layers, sometimes surface hoar, sometimes an encrusted surface. The old snowpack itself has been weakened somewhat by faceted crystals in the vicinity of the melt-freeze crust.

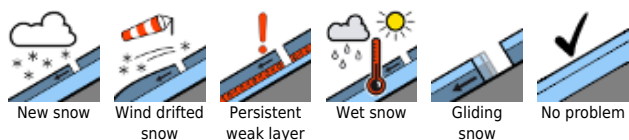
### Weather

On Saturday night, initially clear (longwave outgoing radiation), then clouds will move in and the SW winds intensify. Sunday will start with heavy cloud cover, repeated bouts of snowfall can be expected in the northern barrier cloud regions. Visibility will frequently be reduced. A strong (in summit zones stormy) NW wind will be blowing. Temperature at 1500 m: -5 degrees; at 2000 m: -8 degrees.

### Outlook

Also on Monday, heavy cloud cover is anticipated in the northern barrier cloud regions, accompanied by snowfall. Temperature at 2000 m: -10 degrees. Stormy northerly winds. For avalanche danger, look to (and pay attention to) the snowdrift accumulations.

#### Avalanche problems



#### Danger ratings

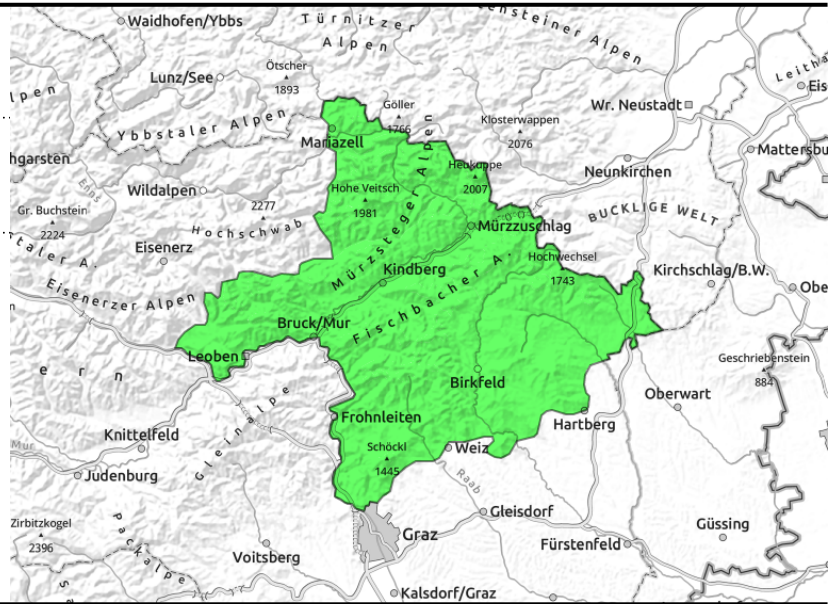
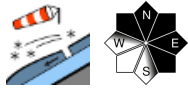


#### Expositions



**09.01.2022**

**Mürzsteiger Alpen, Mürztaler Alpen, Östliche Fischbacher Alpen und Wechselgebiet, Westliche Fischbacher Alpen und Grazer Bergland**



**Low avalanche danger**

Low avalanche danger prevails. Small, shallow snowdrift patches can be formed, otherwise the high altitude slopes are windblown, hardened and melt-freeze encrusted or iced-over. In these places the risks of falling loom. Visibility is often reduced.

**Snowpack structure**

The recent round of snowfall brought less than expected, only a few centimetres. Thus, the snowdrift accumulations have been limited, they blanket mostly hardened, melt-freeze encrusted or bare-ground zones.

**Weather**

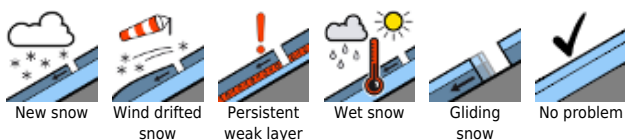
On Saturday night, initially clear (longwave outgoing radiation), then clouds will move in and the SW winds intensify. Sunday will start with heavy cloud cover, repeated bouts of snowfall can be expected in the northern barrier cloud regions. Visibility will frequently be reduced. A strong (in summit zones stormy) NW wind will be blowing. Temperature at 1500 m: -5 degrees; at 2000 m: -8 degrees.

**Outlook**

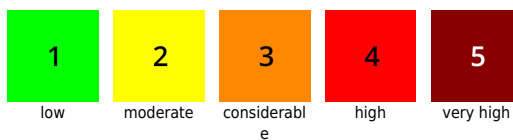
Also on Monday, heavy cloud cover is anticipated in the northern barrier cloud regions, accompanied by snowfall. Temperature at 2000 m: -10 degrees. Stormy northerly winds. For avalanche danger, look to (and pay attention to) the snowdrift accumulations.

Translated by Jeffrey McCabe, [www.creativtrans.com](http://www.creativtrans.com)

**Avalanche problems**



**Danger ratings**



**Expositions**

