
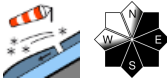

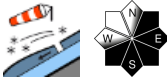

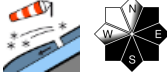

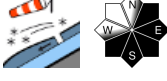


Significant rise in avalanche danger due to fresh snowdrifts

	<p>forestline</p>	<p>Gurktaler Alpen, Schladminger Tauern Süd, Schladminger Tauern Nord, Dachsteingebiet, Nördliche Wölzer Tauern, Südliche Wölzer Tauern, Seckauer Tauern, Rottenmanner Tauern</p>	
		<p>Koralpe, Stub- und Gleinalpe, Seetaler Alpen</p>	
	<p>forestline</p>	<p>Östliche Fischbacher Alpen und Wechselgebiet, Westliche Fischbacher Alpen und Grazer Bergland, Mürtzaler Alpen, Mürtzsteger Alpen, Hochschwabgebiet</p>	
	<p>1500 m</p>	<p>Totes Gebirge, Ennstaler Alpen, Eisenerzer Alpen</p>	

Avalanche problems



Danger ratings

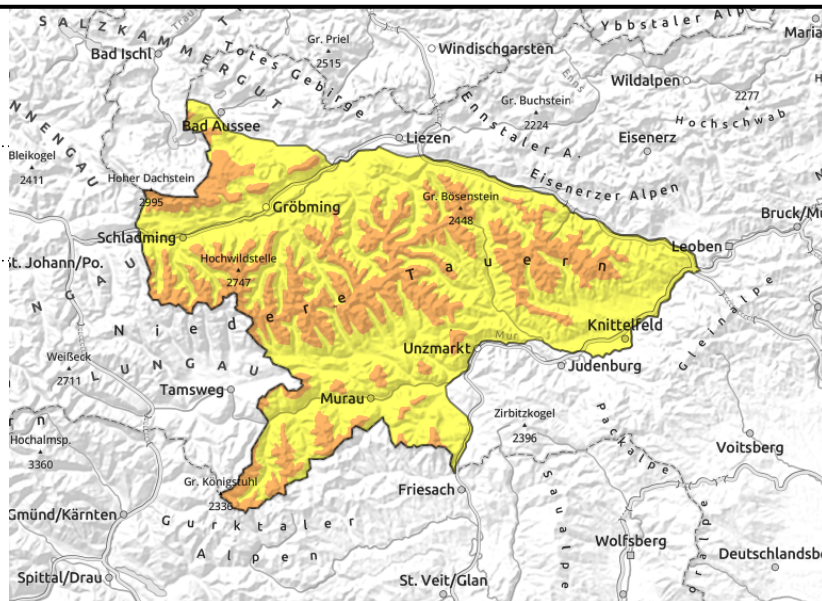
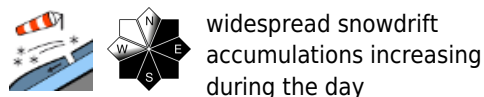


Expositions



05.01.2022

Gurktaler Alpen, Schladminger Tauern Süd, Schladminger Tauern Nord, Dachsteingebiet, Nördliche Wölzer Tauern, Südliche Wölzer Tauern, Seckauer Tauern, Rottenmanner Tauern



New snow + storm winds = considerable avalanche danger

New snow and storm-strength NW winds are increasing avalanche danger to Danger Level 3 (considerable) above the treeline. Freshly-generated snowdrifts are prone to triggering, medium-to-large sized avalanches can be triggered even by minimum additional loading, i.e. by the weight of one sole skier. Avalanche prone locations will increase with ascending altitude and over the course of the day, especially in E/SW aspects, in gullies and bowls and behind protruberances, depending on wind impact also in forest clearances. Poor visibility makes it more difficult to assess the danger on-site.

Snowpack structure

At high altitude, heavy snowfall deposited atop a frequently smooth, melt-freeze encrusted snowpack surface, initially with little wind impact. Bot the smooth surface and the persistent soft snowpack layers constitute an unfavorable base for the bonded snowdrifts. Moreover, during the course of the day the proneness to triggering will increase. In places, facted weak layers beneath the melt-freeze crust can be triggered. At lower altitudes the bonding of new snow to the often shallow snowpack is better, but even the drifts are prone to triggering in forest clearances.

Weather

A powerful cold front and a low over Genoa will bring winter conditions back on Wednesday. Right from the start, most summits will be shrouded in fog, from the northwest snowfall will begin. By evening: 15-30 cm is expected, more from place to place. Snowfall level will descend by evening from 1200-1500 m down to valley floors in many areas. Winds will be strong to stormy, shifting gradually to northwesterly. Temperatures will continually drop: at 2000 m from -1 in the morning to -9 in the evening. At 1500 m: from slightly above zero to -6 degrees.

On Thursday in the Northern Alps and northern Niedere Tauern, initially clouds and minor snowfall. As of midday, improving weather conditions, dispersed clouds. On the southern flank of the Alps, mostly pleasant conditions, but cold and windy.

Outlook

No change in avalanche danger, trigger-sensitive snowdrifts remain the main problem.

Avalanche problems



Danger ratings



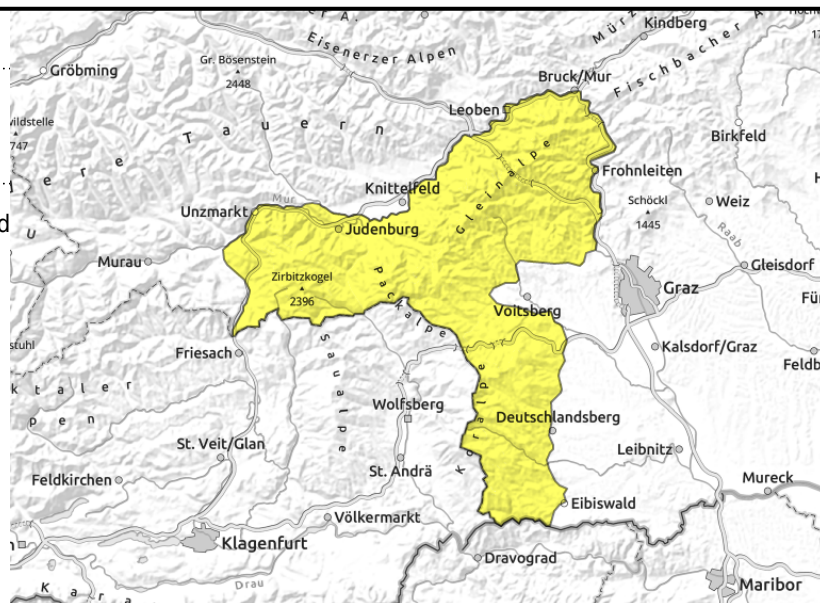
Expositions



Koralpe, Stub- und Gleinalpe, Seetaler Alpen



in gullies and steep bowls, heed fresh drifts



New snow + storm winds. Heed fresh snowdrifts!

New snow and storm-strength NW winds are increasing avalanche danger to Danger Level 3 (considerable) above the treeline. Freshly-generated snowdrifts are prone to triggering, medium-to-large sized avalanches can be triggered even by minimum additional loading, i.e. by the weight of one sole skier. Avalanche prone locations will increase with ascending altitude and over the course of the day, especially in E/SW aspects, in gullies and bowls and behind protruberances, depending on wind impact also in forest clearances. Poor visibility makes it more difficult to assess the danger on-site.

Snowpack structure

At high altitude, heavy snowfall deposited atop a frequently smooth, melt-freeze encrusted snowpack surface, initially with little wind impact. Bot the smooth surface and the persistent soft snowpack layers constitute an unfavorable base for the bonded snowdrifts. Moreover, during the course of the day the proneness to triggering will increase. In places, facted weak layers beneath the melt-freeze crust can be triggered. At lower altitudes the bonding of new snow to the often shallow snowpack is better, but even the drifts are prone to triggering in forest clearances.

Weather

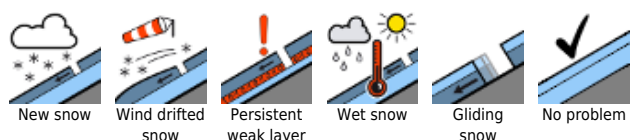
A powerful cold front and a low over Genoa will bring winter conditions back on Wednesday. Right from the start, most summits will be shrouded in fog, from the northwest snowfall will begin. By evening: 15-30 cm is expected, more from place to place. Snowfall level will descend by evening from 1200-1500 m down to valley floors in many areas. Winds will be strong to stormy, shifting gradually to northwesterly. Temperatures will continually drop: at 2000 m from -1 in the morning to -9 in the evening. At 1500 m: from slightly above zero to -6 degrees.

On Thursday in the Northern Alps and northern Niedere Tauern, initially clouds and minor snowfall. As of midday, improving weather conditions, dispersed clouds. On the southern flank of the Alps, mostly pleasant conditions, but cold and windy.

Outlook

Hardly any change in avalanche danger, trigger-sensitive snowdrifts remain the main problem.

Avalanche problems



Danger ratings



Expositions



05.01.2022

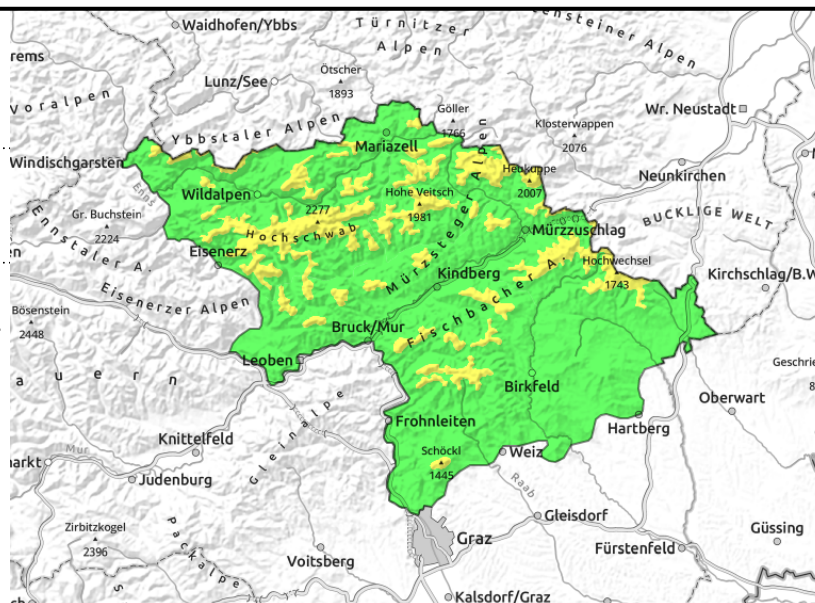
**Östliche Fischbacher Alpen und Wechselgebiet,
Westliche Fischbacher Alpen und Grazer Bergland,
Mürztaler Alpen, Mürzsteger Alpen,
Hochschwabgebiet**



forestline



in gullies and steep bowls,
behind protruberances, danger
zones increasing during
daytime



Fresh drifts due to new snow + storm winds

At higher altitudes the new snow will often be deposited atop a smooth, melt-freeze encrusted old snowpack surface, initially amid little wind impact. The smooth surfaces are an unfavorable base for the bonded drifts, as the day unfolds the proneness to triggering is expected to increase. In places, facted weak layers beneath the melt-freeze crust can trigger the old snowpack. At lower altitudes, bonding of the moist old snow to the shallow snowpack is better.

Snowpack structure

At high altitude, heavy snowfall deposited atop a frequently smooth, melt-freeze encrusted snowpack surface, initially with little wind impact. Bot the smooth surface and the persistent soft snowpack layers constitute an unfavorable base for the bonded snowdrifts. Moreover, during the course of the day the proneness to triggering will increase. In places, facted weak layers beneath the melt-freeze crust can be triggered. At lower altitudes the bonding of new snow to the often shallow snowpack is better, but even the drifts are prone to triggering in forest clearances.

Weather

A powerful cold front and a low over Genoa will bring winter conditions back on Wednesday. Right from the start, most summits will be shrouded in fog, from the northwest snowfall will begin. By evening: 15-30 cm is expected, more from place to place. Snowfall level will descend by evening from 1200-1500 m down to valley floors in many areas. Winds will be strong to stormy, shifting gradually to northwesterly. Temperatures will continually drop: at 2000 m from -1 in the morning to -9 in the evening. At 1500 m: from slightly above zero to -6 degrees.

On Thursday in the Northern Alps and northern Niedere Tauern, initially clouds and minor snowfall. As of midday, improving weather conditions, dispersed clouds. On the southern flank of the Alps, mostly pleasant conditions, but cold and windy.

Outlook

Little change in avalanche danger.

Avalanche problems



New snow



Wind drifted snow



Persistent weak layer



Wet snow



Gliding snow



No problem

Danger ratings



1

low



2

moderate



3

considerabl

e



4

high



5

very high

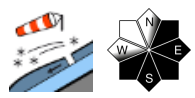
Expositions

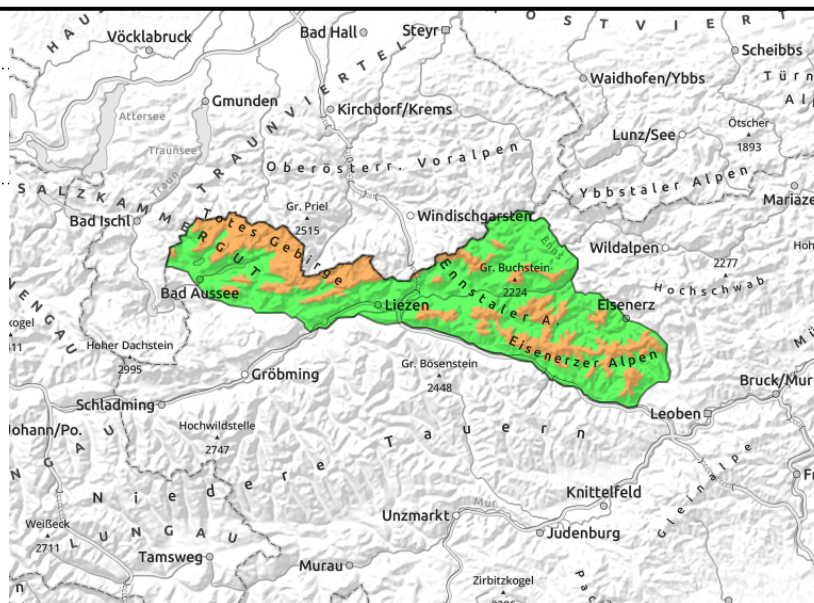


05.01.2022

Totes Gebirge, Ennstaler Alpen, Eisenerzer Alpen



 in gullies and steep bowls, behind protruberances, danger zones increasing in daytime



Avalanche danger increasing due to new snow and wind at high altitude

New snow and storm-strength NW winds are increasing avalanche danger to Danger Level 3 (considerable) above the treeline. Freshly-generated snowdrifts are prone to triggering, medium-to-large sized avalanches can be triggered even by minimum additional loading, i.e. by the weight of one sole skier. Avalanche prone locations will increase with ascending altitude and over the course of the day, especially in E/SW aspects, in gullies and bowls and behind protruberances, depending on wind impact also in forest clearances. Poor visibility makes it more difficult to assess the danger on-site.

Snowpack structure

At higher altitudes the new snow will often be deposited atop a smooth, melt-freeze encrusted old snowpack surface, initially amid little wind impact. The smooth surfaces are an unfavorable base for the bonded drifts, as the day unfolds the proneness to triggering is expected to increase. In places, facted weak layers beneath the melt-freeze crust can trigger the old snowpack. At lower altitudes, bonding of the moist old snow to the shallow snowpack is better, but trigger-sensitive drifts are being generated in forest clearances.

Weather

A powerful cold front and a low over Genoa will bring winter conditions back on Wednesday. Right from the start, most summits will be shrouded in fog, from the northwest snowfall will begin. By evening: 15-30 cm is expected, more from place to place. Snowfall level will descend by evening from 1200-1500 m down to valley floors in many areas. Winds will be strong to stormy, shifting gradually to northwesterly. Temperatures will continually drop: at 2000 m from -1 in the morning to -9 in the evening. At 1500 m: from slightly above zero to -6 degrees.

On Thursday in the Northern Alps and northern Niedere Tauern, initially clouds and minor snowfall. As of midday, improving weather conditions, dispersed clouds. On the southern flank of the Alps, mostly pleasant conditions, but cold and windy.

Outlook

Hardly any change in avalanche danger, trigger-sensitive snowdrifts remain the main problem.

Translated by Jeffrey McCabe, www.creativtrans.com

Avalanche problems



Danger ratings



Expositions

