
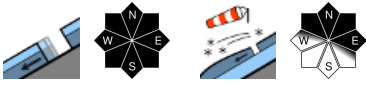



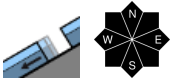
Föhn-mild SW air current - glide snow activity and fresh snowdrifts require caution

- 

Totes Gebirge, Hochschwabgebiet, Mürzteger Alpen, Schladminger Tauern Nord, Nördliche Wölzer Tauern, Rottenmanner Tauern, Eisenerzer Alpen, Ennstaler Alpen, Dachsteingebiet


- 

Gurktaler Alpen, Südliche Wölzer Tauern, Schladminger Tauern Süd, Seckauer Tauern, Seetaler Alpen, Stub- und Gleinalpe, Mürztaler Alpen, Westliche Fischbacher Alpen und Grazer Bergland, Östliche Fischbacher Alpen und Wechselgebiet, Koralm



Avalanche problems



Danger ratings



Expositions



04.01.2022

Totes Gebirge, Hochschwabgebiet, Mürzsteger Alpen, Schladminger Tauern Nord, Nördliche Wölzer Tauern, Rottenmanner Tauern, Eisenerzer Alpen, Ennstaler Alpen, Dachsteingebiet



seldom, in extremely steep terrain



exposed terrain is windblown



Low avalanche danger, only local avalanche prone locations, fresh snowdrift patches due to southerly foehn

Low danger prevails in general. Dangerous places for dry-snow slab avalanches are limited to isolated, extremely steep, shady gullies above 2400 m. The glide-snow activity is receding, isolated releases on steep slopes over smooth ground cannot be ruled out. Therefore: avoid zones with glide cracks. In exposed terrain the snowpack surface is hard: risk of falling.

Snowpack structure

Local minor snowfall in Totes Gebirge and Niedere Tauern. The largely compact but moist snowpack was able to firm up somewhat on Monday due to lower temperatures. Depending on altitude and aspect the melt-freeze crust can-or-cannot bear loads. Above 2400 m, local weak layers in the old snow can be triggered. At lower altitudes the snowpack is giving way to bare ground.

Weather

On Tuesday a SW air current will permit only a little sunshine, clouds will repeatedly pass through. The SW winds will often be brisk-to-strong, over the Koralpe and Zirbitzkogel storm-strength. Temperatures will rise especially on the northern flank of the Alps. At 2000 m: +7 to +10 (foehn-induced), palpably cooler on Turrach (just above zero).

On Wednesday, a cold front will bring wintry conditions back to the mountains. Stormy NW winds, dropping temperatures, the snowfall level down on the valley floor by evening. Most of the snowfall will be in the western Gurktal Alps and Schladminger Tauern: up to 40 cm expected.

Outlook

Pronounced slab avalanche danger amid stormy, wintry-cold conditions and poor visibility.

Avalanche problems



Danger ratings

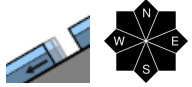


Expositions



04.01.2022

Gurktaler Alpen, Südliche Wölzer Tauern, Schladminger Tauern Süd, Seckauer Tauern, Seetaler Alpen, Stub- und Gleinalpe, Mürztaler Alpen, Westliche Fischbacher Alpen und Grazer Bergland, Östliche Fischbacher Alpen und Wechselgebiet, Koralpe



at any time of day or night

Hardly any danger zones. Low danger.

In the southern massifs avalanche danger is low. The glide-snow activity is receding, in isolated cases on very steep hillsides and in forest clearances, glide-snow avalanches can release naturally. In higher exposed terrain the snowpack is hard: risk of falling.

Snowpack structure

Up to high altitudes the snowpack is moist and compact by and large. Depending on altitude and aspect the melt-freeze crust can-or-cannot bear loads. The snow may or may not transform to firn. Exposed terrain is starkly wind-impacted, the foehn wind could generate thin snowdrift patches. At lower altitudes the snowpack is giving way to bare ground.

Weather

On Tuesday a SW air current will permit only a little sunshine, clouds will repeatedly pass through. The SW winds will often be brisk-to-strong, over the Koralpe and Zirbitzkogel storm-strength. Temperatures will rise especially on the northern flank of the Alps. At 2000 m: +7 to +10 (foehn-induced), palpably cooler on Turrach (just above zero).

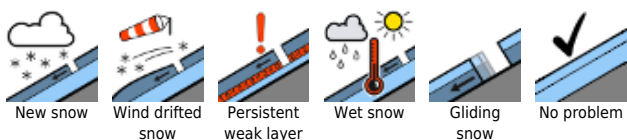
On Wednesday, a cold front will bring wintry conditions back to the mountains. Stormy NW winds, dropping temperatures, the snowfall level down on the valley floor by evening. Most of the snowfall will be in the western Gurktal Alps and Schladminger Tauern: up to 40 cm expected.

Outlook

Pronounced slab avalanche danger amid stormy, wintry-cold conditions and poor visibility.

Translated by Jeffrey McCabe, www.creativtrans.com

Avalanche problems



Danger ratings



Expositions

