




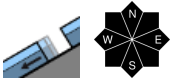
## Low danger - local persistent weak layer - glide snow problem

- 

Dachsteingebiet, Totes Gebirge, Ennstaler Alpen, Hochschwabgebiet, Mürzteger Alpen, Schladminger Tauern Nord, Nördliche Wölzer Tauern, Rottenmanner Tauern, Eisenerzer Alpen


- 

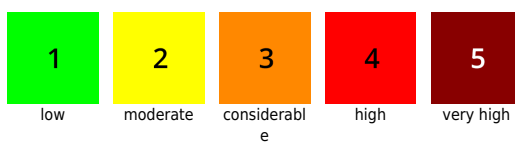
Gurktaler Alpen, Südliche Wölzer Tauern, Schladminger Tauern Süd, Seckauer Tauern, Seetaler Alpen, Stub- und Gleinalpe, Mürtzaler Alpen, Westliche Fischbacher Alpen und Grazer Bergland, Östliche Fischbacher Alpen und Wechselgebiet, Koralle



### Avalanche problems



### Danger ratings



### Expositions



**03.01.2022**

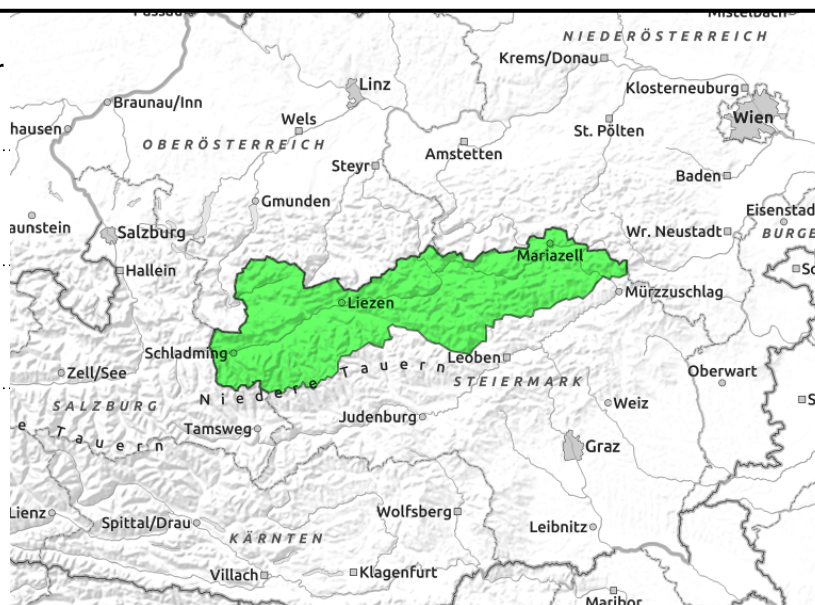
**Dachsteingebiet, Totes Gebirge, Ennstaler Alpen, Hochschwabgebiet, Mürzsteiger Alpen, Schladminger Tauern Nord, Nördliche Wölzer Tauern, Rottenmanner Tauern, Eisenerzer Alpen**



mostly shady slopes and in high alpine regions



seldom, in extremely steep terrain



## Low avalanche danger, only local avalanche prone locations

Low danger prevails in general. Dangerous places for dry-snow slab avalanches are limited to isolated, extremely steep, shady gullies above 2400 m. The glide-snow activity is receding, isolated releases on steep slopes over smooth ground cannot be ruled out. Therefore: avoid zones with glide cracks. In exposed terrain the snowpack surface is hard: risk of falling.

### Snowpack structure

Up to high altitudes the snowpack is moist-to-wet, generally compact. Depending on altitude and aspect the melt-freeze crust can-or-cannot bear loads. Above 2400 m, local weak layers in the old snow can be triggered. At lower altitudes the snowpack is giving way to bare ground.

### Weather

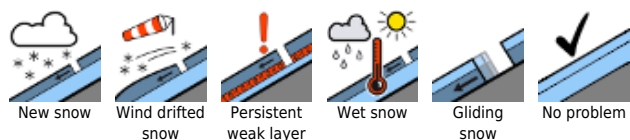
On Monday clouds will pass through the Northern Alps, the summits will often be shrouded in fog. Minor rainfall or snow showers in the eastern sector of the Northern Alps are expected. Temperatures will drop noticeably, the snowfall level descend to 1500m. At 2000 m at midday: -2 degrees; at 1500 m: +1 degree. Strong (in north and east, stormy) westerly winds.

The further weather development will be turbulent. On Tuesday, a SW air current will bring mild temperatures, especially to northern regions, but it will remain dry. On Wednesday, a cold front and a low over the Mediterranean will make deep-wintery conditions return, dropping temperatures and fresh snowfall.

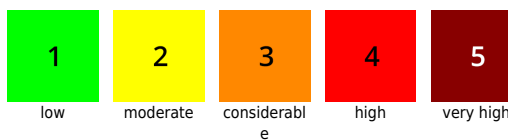
### Outlook

Until Tuesday hardly any change. As of Wednesday, increase in danger due to new snow and wind.

#### Avalanche problems



#### Danger ratings

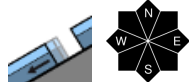
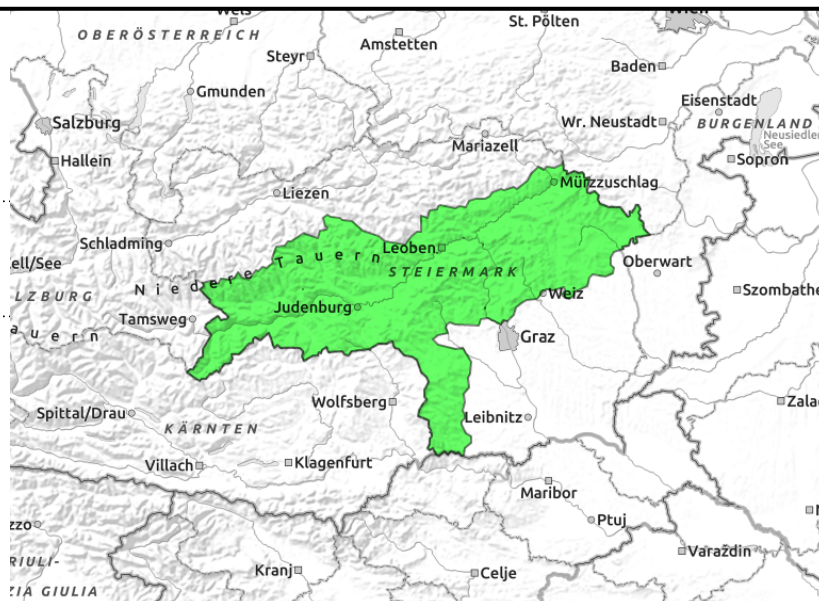


#### Expositions



**03.01.2022**

**Gurktaler Alpen, Südliche Wölzer Tauern, Schladminger Tauern Süd, Seckauer Tauern, Seetaler Alpen, Stub- und Gleinalpe, Mürztaler Alpen, Westliche Fischbacher Alpen und Grazer Bergland, Östliche Fischbacher Alpen und Wechselgebiet, Koralpe**



at any time of day or night

## Hardly any danger zones. Low danger.

In the southern massifs avalanche danger is low. The glide-snow activity is receding, in isolated cases on very steep hillsides and in forest clearances, glide-snow avalanches can release naturally. In higher exposed terrain the snowpack is hard: risk of falling.

### Snowpack structure

Up to high altitudes the snowpack is moist and compact by and large. Depending on altitude and aspect the melt-freeze crust can-or-cannot bear loads. Above 2400 m, local weak layers in the old snow can be triggered by a lubricating layer at ground level. At lower altitudes the snowpack is giving way to bare ground.

### Weather

On Monday clouds will pass through the Northern Alps, the summits will often be shrouded in fog. Minor rainfall or snow showers in the eastern sector of the Northern Alps are expected. Temperatures will drop noticeably, the snowfall level descend to 1500m. At 2000 m at midday: -2 degrees; at 1500 m: +1 degree. Strong (in north and east, stormy) westerly winds.

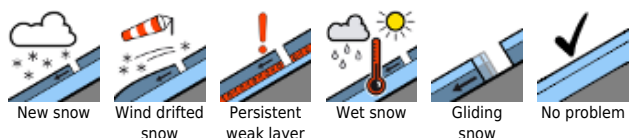
The further weather development will be turbulent. On Tuesday, a SW air current will bring mild temperatures, especially to northern regions, but it will remain dry. On Wednesday, a cold front and a low over the Mediterranean will make deep-wintery conditions return, dropping temperatures and fresh snowfall.

### Outlook

Until Tuesday hardly any change. As of Wednesday, increase in danger due to new snow and wind.

Translated by Jeffrey McCabe, [www.creativtrans.com](http://www.creativtrans.com)

#### Avalanche problems



#### Danger ratings



#### Expositions

