

Snowdrift problem + Persistent weak layer

	<p>timberline</p>	<p>Rottenanner Tauern, Schladminger Tauern Süd, Schladminger Tauern Nord, Hochschwabgebiet, Nördliche Wölzer Tauern, Südliche Wölzer Tauern, Seckauer Tauern, Eisenerzer Alpen</p>				
		<p>Westliche Fischbacher Alpen und Grazer Bergland, Mürtzaler Alpen, Östliche Fischbacher Alpen und Wechselgebiet, Stub- und Gleinalpe, Korralpe, Seetaler Alpen, Gurktaler Alpen, Mürtzsteiger Alpen</p>				
		<p>Dachsteingebiet, Totes Gebirge, Ennstaler Alpen</p>				

Avalanche problems



Danger ratings



Expositions



27.12.2021

Rottenmanner Tauern, Schladminger Tauern Süd, Schladminger Tauern Nord, Hochschwabgebiet, Nördliche Wölzer Tauern, Südliche Wölzer Tauern, Seckauer Tauern, Eisenerzer Alpen



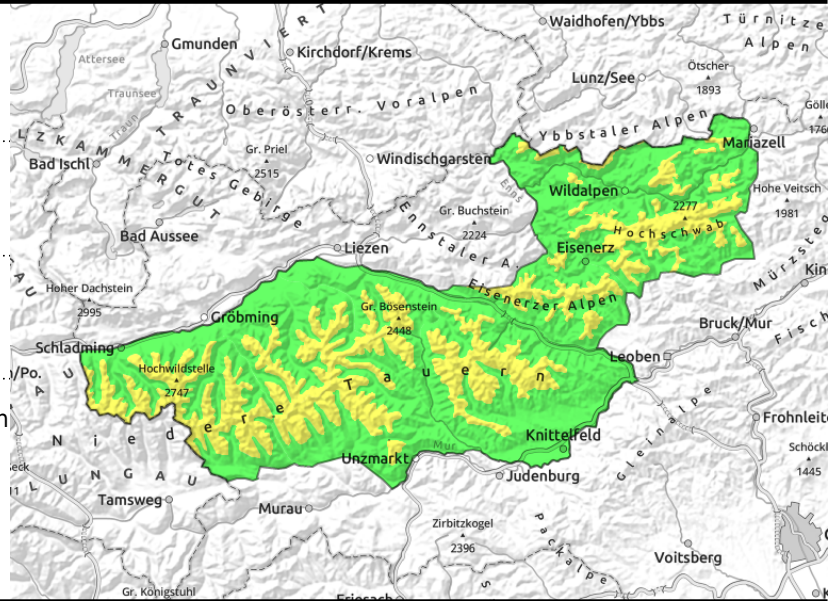
timberline



above timberline



in shady and high-alpine terrain



Snowdrifts + persistent weak layer

Avalanche prone locations where large additional loading can trigger a slab are located on steep wind-loaded slopes esp. in NW/SE ridgeline slopes above 1800 m. The easily recognized snowpack patches are prone to triggering and can force a fall. Aside from that there are few avalanche prone locations where large additional loading can trigger a slab release in the old snow, most likely on extremely steep and shallow-snow slopes above about 1900 m in E/N aspects. Shallow-snow and extremely steep slopes, especially near ridgelines, should be assessed critically or better still, circumvented.

Snowpack structure

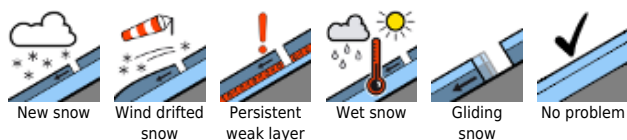
At high altitudes the old snowpack surface is hardened or iced over. On top of it there is a bit of new snow which fell on Saturday night amid light wind. On leeward slopes there are older drifts, most of them shallow. Beneath them the snowpack fundament is compact, without pronounced weak layers. Exception: shady high-altitudes slopes where the process of expansive metamorphism proceeds apace above the treeline, the snowpack is thus forfeiting its firmness. In case of sunshine the surface at high altitudes can turn to firn; at low altitudes it will become moist.

Weather

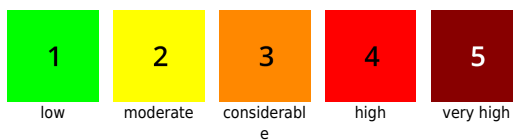
On Monday in the Eastern Alps, weak high-pressure front conditions will come to the fore. In the Niedere Tauern clouds will disperse in the morning and it will turn sunny. From Hochschwab eastwards, low lying clouds will persist all day long. Temperatures at midday in the western regions at 2000 m: 0 degrees; at 1500 m: +2 degrees; in the eastern regions: -2 to +2 degrees. Winds will mostly be light from S/SW directions.

On Tuesday, widespread clouds will pass through, but sunshine will also be present. The light-to-moderate winds will shift from southwesterly to northwesterly during the afternoon. Temperatures will rise slightly. Some new snow is approaching along the Tauern above 1000 m.

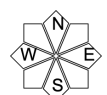
Avalanche problems



Danger ratings



Expositions

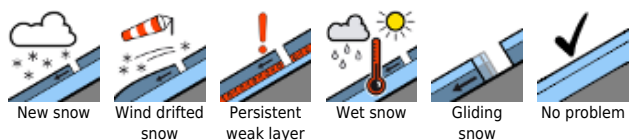


27.12.2021

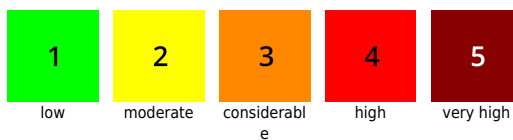
Outlook

No significant change in avalanche danger is expected.

Avalanche problems



Danger ratings



Expositions

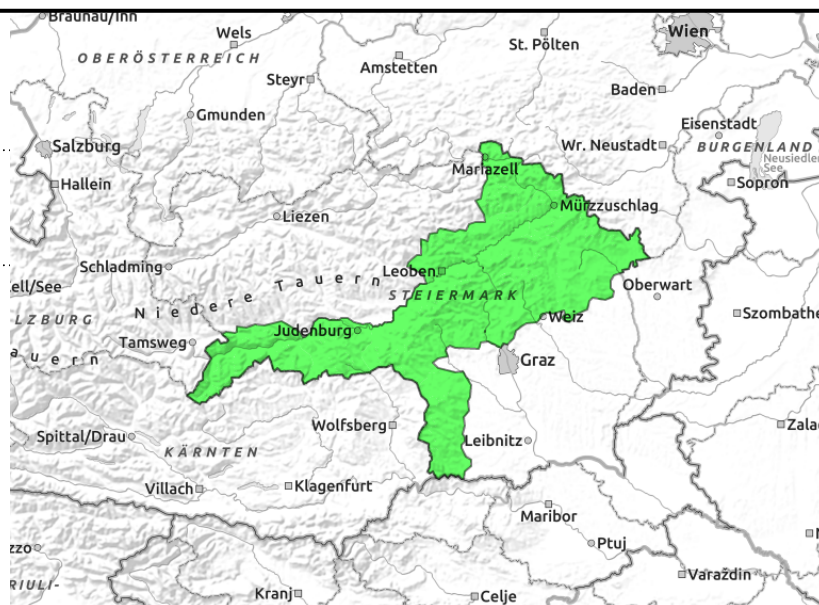


27.12.2021

Westliche Fischbacher Alpen und Grazer Bergland, Mürztaler Alpen, Östliche Fischbacher Alpen und Wechselgebiet, Stub- und Gleinalpe, Koralpe, Seetaler Alpen, Gurktaler Alpen, Mürzsteger Alpen



thin, small snowdrifts, triggerable only in few places



Generally low avalanche danger

Avalanche danger is low in general, isolated snowdrift patches in the cavities are not well bonded with the snowpack beneath them. In these avalanche prone locations, isolated slab avalanches can be triggered. In shady terrain above the treeline there is a persistent weak layer, slab avalanches cannot be ruled out. Caution urged towards the perils of falling on the icy surfaces.

Snowpack structure

At high altitudes the surface is hardened and icy or wind-pressed, beneath that the fundament is compact and without avalanche-relevant weak layers. However, the process of expansive metamorphosis is continuing above 1500 m, the snowpack evidences increasingly frequently faceted crystals, is forfeiting its firmness and losing its base. At low altitudes the snowpack is moist-to-wet and the surface thinly encrusted at most.

Weather

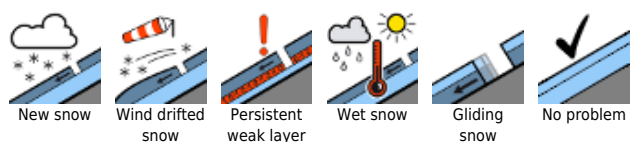
On Monday in the Eastern Alps, weak high-pressure front conditions will come to the fore. In the Niedere Tauern clouds will disperse in the morning and it will turn sunny. From Hochschwab eastwards, low lying clouds will persist all day long. Temperatures at midday in the western regions at 2000 m: 0 degrees; at 1500 m: +2 degrees; in the eastern regions: -2 to +2 degrees. Winds will mostly be light from S/SW directions.

On Tuesday, widespread clouds will pass through, but sunshine will also be present. The light-to-moderate winds will shift from southwesterly to northwesterly during the afternoon. Temperatures will rise slightly.

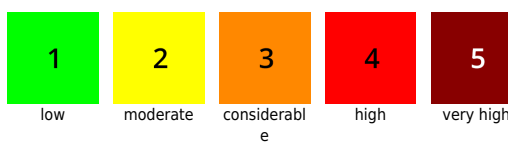
Outlook

Avalanche danger is expected to remain low.

Avalanche problems



Danger ratings



Expositions



27.12.2021

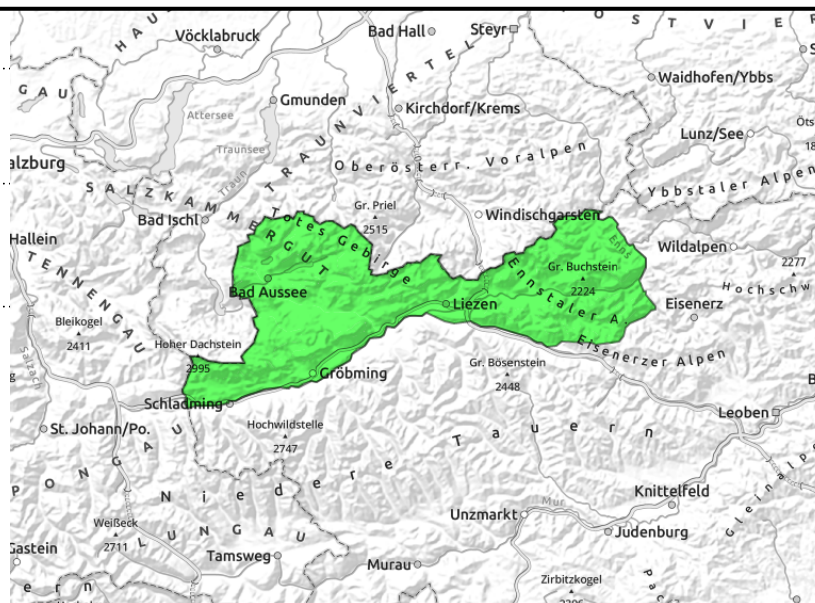
Dachsteingebiet, Totes Gebirge, Ennstaler Alpen



thin, small snowdrift masses



triggerable in few spots above 2200 m



Few danger zones, due to snowdrift problem and persistent weak layer

Avalanche danger is low in general, isolated snowdrift patches are to be found in wind-loaded steep zones esp. in N/E ridgeline areas above 1800 m. The easily recognized snowdrift patches are prone to triggering and are a major risk to falling. Apart from that there are few danger zones where a slab can be triggered by large additional loading, most likely in extremely steep, shallow-snow terrain above 2200 m on E/N facing slopes. Shallow-snow and extremely steep slopes, especially in ridgeline terrain, should be critically assessed or, better yet, circumvented.

Snowpack structure

On Sunday, 5-10 cm of new snow was registered above 1500 m amid light wind. Older and small snowdrift patches have been deposited atop a frequently hardened and melt-freeze encrusted and often smooth old snowpack surface, bonding deteriorates with ascending altitude. Beneath the melt-freeze crusts, particularly on shady slopes, is a soft, faceted layer. On sunny slopes the surface can turn to firn during the daytime, at lower altitudes it rapidly turns moist-to-wet.

Weather

On Monday in the Eastern Alps, weak high-pressure front conditions will come to the fore. In the Niedere Tauern clouds will disperse in the morning and it will turn sunny. From Hochschwab eastwards, low lying clouds will persist all day long. Temperatures at midday in the western regions at 2000 m: 0 degrees; at 1500 m: +2 degrees; in the eastern regions: -2 to +2 degrees. Winds will mostly be light from S/SW directions.

On Tuesday, widespread clouds will pass through, but sunshine will also be present. The light-to-moderate winds will shift from southwesterly to northwesterly during the afternoon. Temperatures will rise slightly. Some new snow is approaching along the Tauern above 1000 m.

Outlook

No significant change in avalanche danger is expected.

Translated by Jeffrey McCabe, www.creativtrans.com

Avalanche problems



Danger ratings



Expositions

