





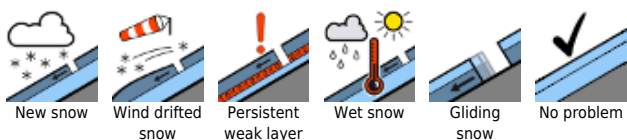


## Severely shifting wind directions. Snowdrifts possible in all aspects.

	<p>forestline</p>	<p>Totes Gebirge, Dachsteingebiet, Schladminger Tauern Nord, Schladminger Tauern Süd, Gurktaler Alpen, Nördliche Wölzer Tauern, Rottenmanner Tauern, Ennstaler Alpen, Südliche Wölzer Tauern, Seetaler Alpen</p>	
	<p>forestline</p>	<p>Mürzsteiger Alpen, Hochschwabgebiet, Eisenerzer Alpen, Seckauer Tauern, Stub- und Gleinalpe, Korralpe</p>	
	<p>forestline</p>	<p>Mürztaler Alpen, Westliche Fischbacher Alpen und Grazer Bergland, Östliche Fischbacher Alpen und Wechselgebiet</p>	

### Avalanche problems



### Danger ratings

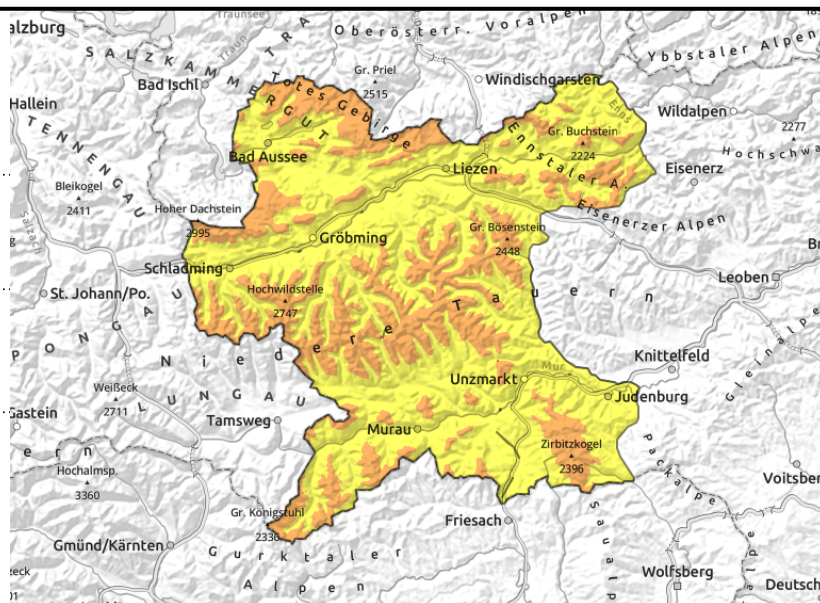
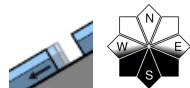
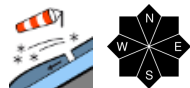


### Expositions



**11.12.2021**

**Totes Gebirge, Dachsteingebiet, Schladminger Tauern Nord, Schladminger Tauern Süd, Gurktaler Alpen, Nördliche Wölzer Tauern, Rottenmanner Tauern, Ennstaler Alpen, Südliche Wölzer Tauern, Seetaler Alpen**



## Snowdrifts accumulations being deposited in all aspects

In the Northern Alps, Niedere Tauern, Gurktal and Seetal Alps, moderate avalanche danger prevails below the treeline, considerable danger above the treeline. Avalanche prone locations are found in nearly all aspects. Critical zones are distant from ridgelines, behind protruberances in the landscape. Minimum additional loading is sufficient to trigger a slab avalanche. At intermediate altitudes on extremely steep grass-covered slopes, isolated glide-snow slides are possible.

### Snowpack structure

The most recent round of cold snowfall on Thursday (10-30 cm) was transported on Friday by strong SW winds, deposited drifts on N/E slopes. As winds shift back to NW again starting tonight, new snowdrift accumulations will be generated on Saturday, deposited on east-facing and south-facing slopes.

Due to repeatedly shifting wind directions in recent days the layers of the snowpack have attained highly differing degrees of hardness. Particularly the softer layers which were generated in warm phases can now act as potential weak layers. The snowpack has not been able to settle, due to the low temperatures, thus the unfavourable layering persists.

### Weather

The Eastern Alps lie in the range of influence of a NW air current. This will bring moist and slightly instable cold air masses to the northern flank of the Alps.

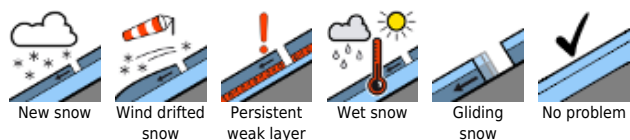
On Saturday, heavy cloud will lodge against the northern flank of the Tauern, the higher peaks will be veiled in fog. Amid brisk to strong NW winds, repeated bouts of snowfall are possible.

The southern flank of the Alps, on the other hand, are favoured as leeward slopes. It will remain free of precipitation, with sunshine and cloudy phases alternating. Also here: strong NW winds.

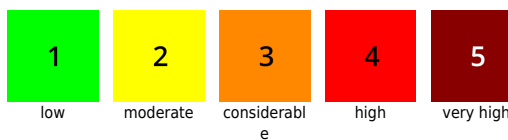
Temperatures in the northern massifs will be -9 degrees at 2000 m; -5 degrees at 1500 m; -7 to -4 degrees in the southern regions.

Also on Sunday, the NW weather will continue. In the northern barrier cloud regions, heavy cloud will dominate, only intermittent sunshine make itself felt. South of the Tauern and near the Styrian rimline ranges it will be quite sunny. But it will remain cold everywhere, and the NW winds will intensify somewhat.

#### Avalanche problems



#### Danger ratings



#### Expositions



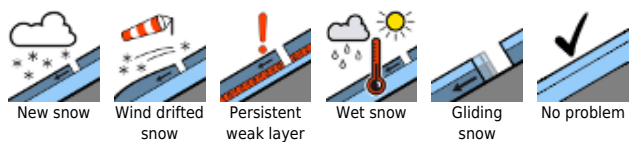
**11.12.2021**

**Outlook**

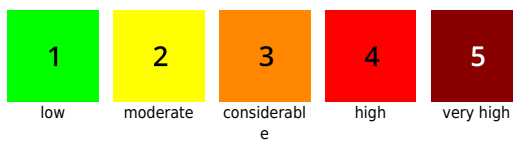
No change in the current avalanche situation.

---

**Avalanche problems**



**Danger ratings**

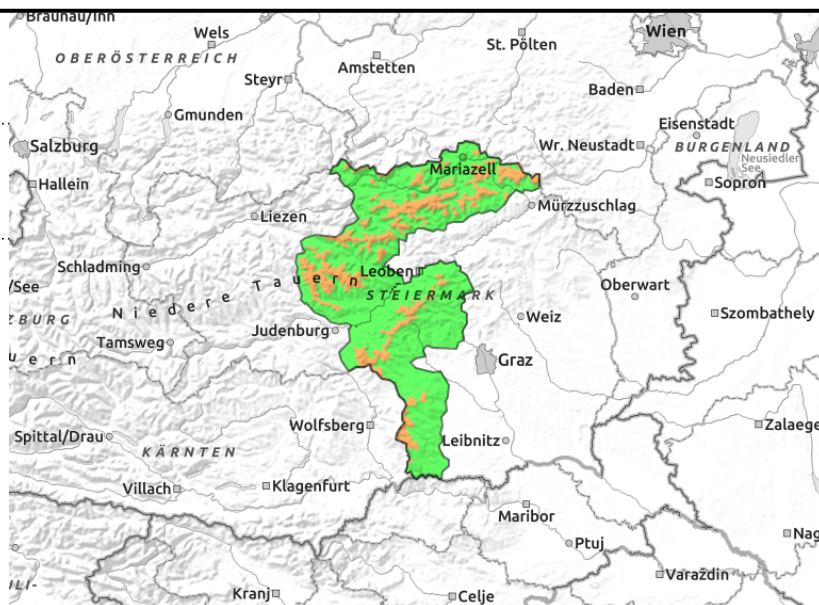
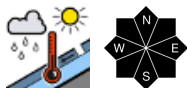


**Expositions**



**11.12.2021**

**Mürzsteiger Alpen, Hochschwabgebiet, Eisenerzer Alpen, Seckauer Tauern, Stub- und Gleinalpe, Koralpe**



## Snowdrifts accumulations being deposited in all aspects

From Hochschwab-Veitsch region, the Eisenerz Alps, Seckau Tauern as far as Glein- Stub- and Packalpe, avalanche danger is considerable above the timberline. Plateaus, crests and ridges have been windblown, fresh cornices have formed which are instable. Danger zones focus on slopes in all aspects where particularly near ridgelines, behind protruberances in the landscape, in gullies and bowls in areas distant from ridgelines, fresh snowdrift accumulations have been generated which can be triggered even by minimum additional loading.

### Snowpack structure

The most recent round of cold snowfall on Thursday (10-30 cm) was transported on Friday by strong SW winds, deposited drifts on N/E slopes. As winds shift back to NW again starting tonight, new snowdrift accumulations will be generated on Saturday, deposited on east-facing and south-facing slopes.

Due to repeatedly shifting wind directions in recent days the layers of the snowpack have attained highly differing degrees of hardness. Particularly the softer layers which were generated in warm phases can now act as potential weak layers. The snowpack has not been able to settle, due to the low temperatures, thus the unfavourable layering persists.

### Weather

The Eastern Alps lie in the range of influence of a NW air current. This will bring moist and slightly instable cold air masses to the northern flank of the Alps.

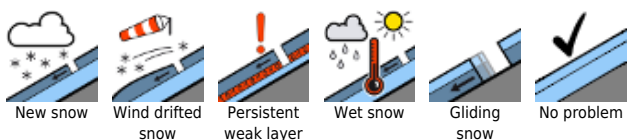
On Saturday, heavy cloud will lodge against the northern flank of the Tauern, the higher peaks will be veiled in fog. Amid brisk to strong NW winds, repeated bouts of snowfall are possible.

The southern flank of the Alps, on the other hand, are favoured as leeward slopes. It will remain free of precipitation, with sunshine and cloudy phases alternating. Also here: strong NW winds.

Temperatures in the northern massifs will be -9 degrees at 2000 m; -5 degrees at 1500 m; -7 to -4 degrees in the southern regions.

Also on Sunday, the NW weather will continue. In the northern barrier cloud regions, heavy cloud will dominate, only intermittent sunshine make itself felt. South of the Tauern and near the Styrian rimline ranges it will be quite sunny. But it will remain cold everywhere, and the NW winds will intensify

#### Avalanche problems



#### Danger ratings



#### Expositions



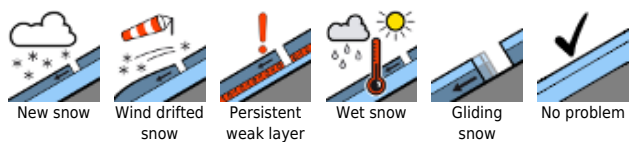
**11.12.2021**

somewhat.

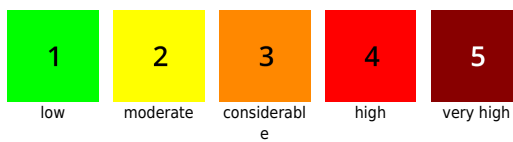
**Outlook**

No change in the current avalanche situation.

**Avalanche problems**



**Danger ratings**

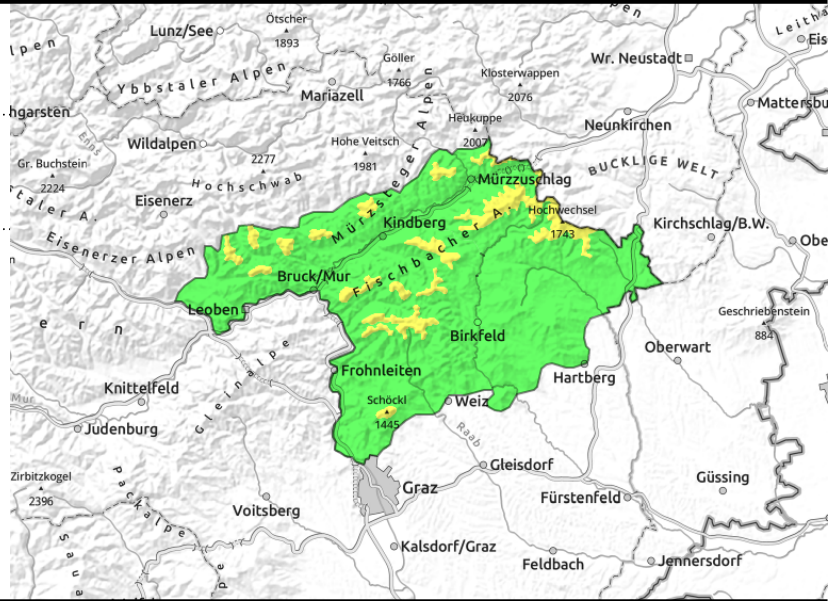
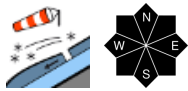


**Expositions**



**11.12.2021**

**Mürztaler Alpen, Westliche Fischbacher Alpen und Grazer Bergland, Östliche Fischbacher Alpen und Wechselgebiet**



**Caution: snowdrifts in ridgeline areas**

In the Fischbach and Mürztal Alps, the Wechsel region and the Graz mountains, low danger prevails; above the timberline danger is moderate. Isolated avalanche prone locations are found near ridgelines in all aspects. Particularly needful of attentiveness: snowdrifts behind protruberances in the landscape and laterally wind-loaded gullies and bowls. A slab avalanche can be triggered by large additional loading.

**Snowpack structure**

With the radically shifting winds combined with the most recent snowfall (bringing up to 30 cm), snowdrift accumulations have been deposited at high altitudes in all aspects. Weak layers in the form of surface hoar blanketed by fresh snow are not area-wide, occur especially in wind-protected terrain.

**Weather**

The Eastern Alps lie in the range of influence of a NW air current. Along the Northern Alps, heavy cloud will lodge on Saturday; in the southern massifs, conditions will be more favourable. Here there will be no precipitation, and some sunny phases mixed with cloud. A strong NW wind will be blowing. Temperatures will reach -5 degrees at 1500 m; -1 degree at 1000 m.

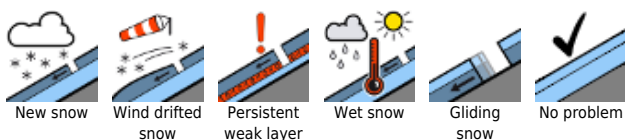
Also on Sunday, the NW weather will continue. In the Styrian rimline ranges, sunny weather will continue. But it will remain cold everywhere, and the NW winds will intensify somewhat.

**Outlook**

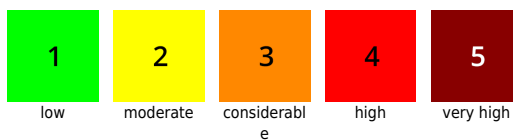
No change in the current avalanche situation.

Translated by Jeffrey McCabe, [www.creativtrans.com](http://www.creativtrans.com)

**Avalanche problems**



**Danger ratings**



**Expositions**

