




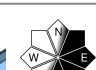


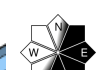


Brittle snowdrifts continue widespread. Shifting winds. FRESH drifts on NORTH-FACING slopes.

	<p>forestline</p>	<p>Seetaler Alpen, Südliche Wölzer Tauern, Schladminger Tauern Nord, Nördliche Wölzer Tauern, Ennstaler Alpen, Rottenmanner Tauern, Totes Gebirge, Dachsteingebiet, Gurktaler Alpen, Schladminger Tauern Süd</p>		
	<p>forestline</p>	<p>Westliche Fischbacher Alpen und Grazer Bergland, Östliche Fischbacher Alpen und Wechselgebiet, Mürtzaler Alpen</p>		
	<p>forestline</p>	<p>Mürztsteger Alpen, Hochschwabgebiet, Eisenerzer Alpen, Stub- und Gleinalpe, Seckauer Tauern, Koralpe</p>		

Avalanche problems



Danger ratings

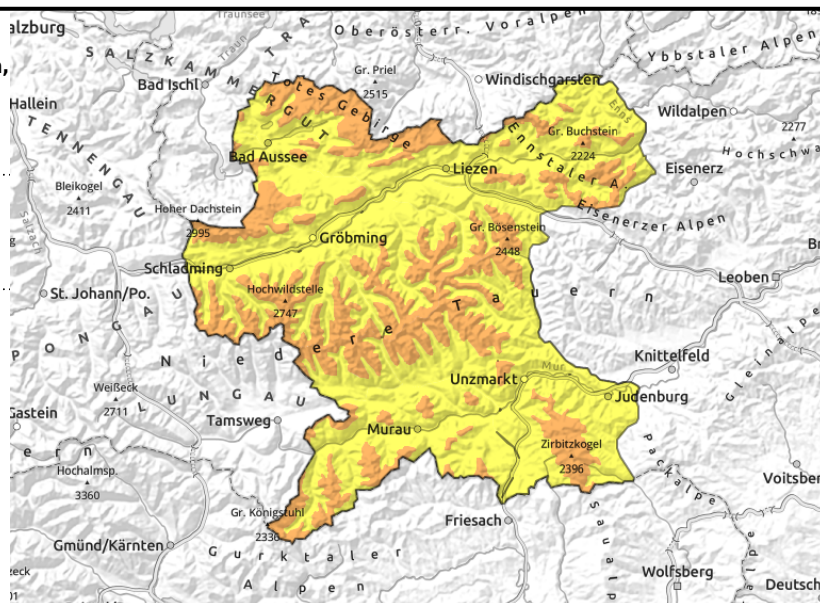
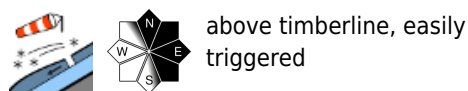


Expositions



10.12.2021

Seetaler Alpen, Südliche Wölzer Tauern, Schladminger Tauern Nord, Nördliche Wölzer Tauern, Ennstaler Alpen, Rottenmanner Tauern, Totes Gebirge, Dachsteingebiet, Gurktaler Alpen, Schladminger Tauern Süd



Caution: trigger-sensitive snowdrift accumulations

In the Northern Alsp, Niedere Tauern, Gurktal and Seetal Alps, moderate avalanche danger prevails; considerable danger above the treeline. Avalanche prone locations are found in east and north aspects. Critical areas are found distant from ridgelines and behind protruberances in the landscape. Minimum additional loading can trigger a slab avalanche.

At intermediate altitudes, isolated glide-snow slides are possible on extremely steep grass-covered slopes.

Snowpack structure

On Wednesday night there was 10-30 cm of fresh snow registered, deposited on top of a softened layer. Thus, an additional potential weak layer has been generated. The old snowpack has a wide variety of diverse layers due to swift weather changes. Other weak layers also exist inside the snowpack, which, due to low temperatures has not been able to settle.

Weather

On Thursday night in the northern regions of Styria, light snowfall is anticipated. In the upper Murtal it is expected to remain free of precipitation with increasingly bright skies.

On Friday, winds will shift temporarily to southwesterly, it will become foehn-influenced in the Northern Alps. In the morning there will be sunshine, in the afternoon cloud banks will move in from the west. Higher peaks in the Niedere Tauern will be veiled in fog. It will remain cold: at 2000 m, -8 degrees.

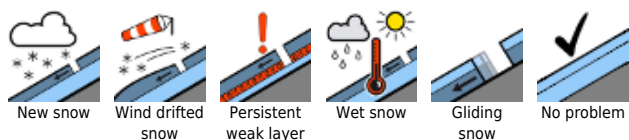
Saturday:

On the northern flank of the Alps, clouds will gather in the barrier cloud zones, intermittent snowfall is expected. Brisk to strong-velocity NW winds, and it will remain cold. On the southern flank of the Alps, hardly any snowfall, winds will be light.

Outlook

Considerable avalanche danger will remain upright.

Avalanche problems



Danger ratings

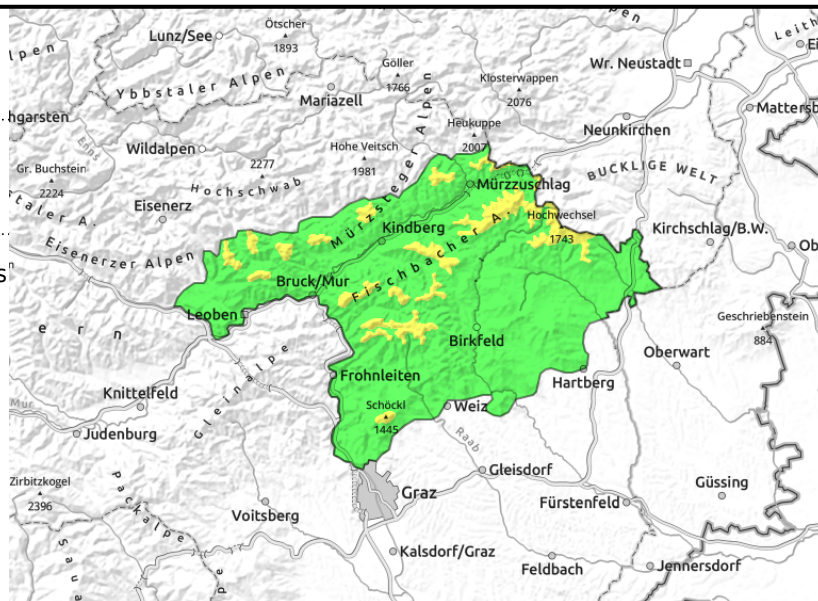
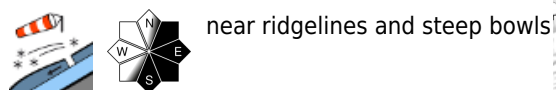


Expositions



10.12.2021

Westliche Fischbacher Alpen und Grazer Bergland, Östliche Fischbacher Alpen und Wechselgebiet, Mürztaler Alpen



Fresh snowdrifts! Foehn wind!

Avalanche danger is low. Above the timberline, danger is moderate. Isolated avalanche prone locations are found behind protruberances in the landscape in east and north aspects. Ridgeline zones require particular attentiveness, a slab avalanche cannot be ruled out.

Snowpack structure

At high altitudes, snowdrifts and fresh snow (up to 30 cm) lie atop a layer of surface hoar. At intermediate altitudes the snowpack was able to stabilize. Overall snow depths are less than in the westerly state regions.

Weather

On Friday, winds will temporarily shift to southwesterly. In the Northern Alps, foehn wind will prevail. In the morning, sunshine will predominate, in the afternoon cloud banks will move in from the west. The higher peaks of Niedere Tauern will be veiled in cloud. It will remain cold: at 2000 m, -8 degrees. Saturday:

Brisk to strong NW winds, very cold. On the southern flank of the Alps, hardly any snow, winds will not be as strong.

Outlook

Slight increase in avalanche danger is expected.

Avalanche problems



Danger ratings

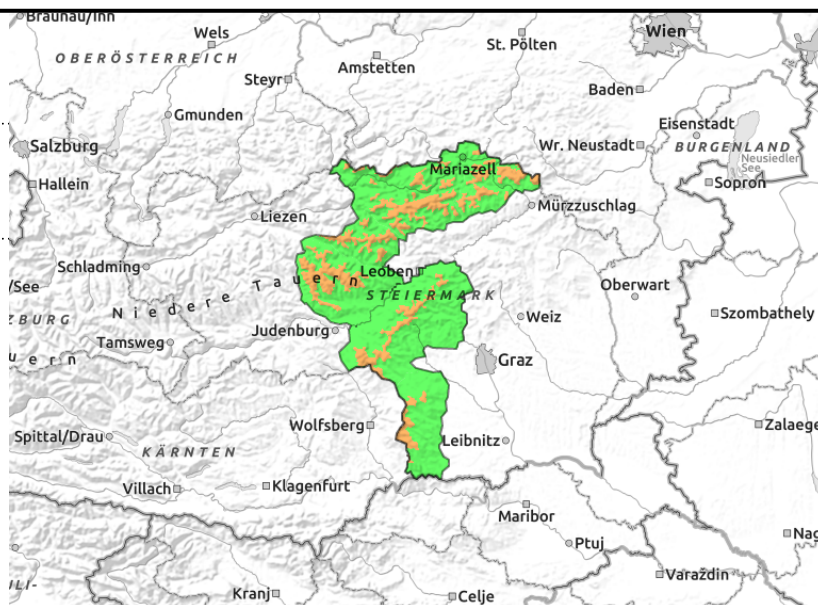
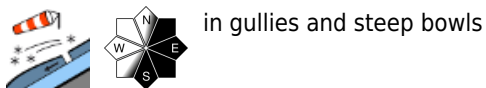


Expositions



10.12.2021

Mürzsteiger Alpen, Hochschwabgebiet, Eisenerzer Alpen, Stub- und Gleinalpe, Seckauer Tauern, Koralpe



Storm winds and fresh snow

Avalanche danger in this regions is considerable above the treeline. Freshly generated cornices are instable. Avalanche prone locations are found in N/E aspects where there is fresh snow near ridgelines that can be triggered by minimum additional loading.

Snowpack structure

Current weather conditions have an unfavourable effect on the snowpack. Fluctuations in winds strengths and directions are generating wide-ranging and trigger-sensitive snowdrift accumulations. Over the last 24 hours there has been 20-30 cm of fresh snow registered. Soft layers of loosely-packed snow blanket surface hoar. Transition zones to melt-freeze crusts weaken the snowpack layering. At high altitudes the snowdrifts lie deposited either atop a layer of surface hoar or atop a hardened layer.

Weather

On Friday, winds will temporarily shift to southwesterly. In the Northern Alps, foehn wind will prevail. In the morning, sunshine will predominate, in the afternoon cloud banks will move in from the west. The higher peaks of Niedere Tauern will be veiled in cloud. It will remain cold: at 2000 m, -8 degrees. Saturday:

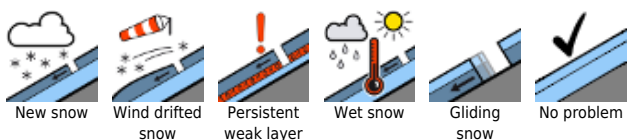
Brisk to strong NW winds, very cold. On the southern flank of the Alps, hardly any snow, winds will not be as strong.

Outlook

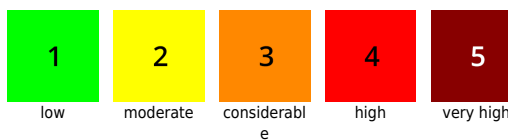
No significant increase in avalanche danger is expected.

Translated by Jeffrey McCabe, www.creativtrans.com

Avalanche problems



Danger ratings



Expositions

