
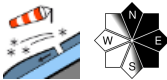

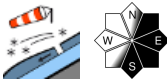

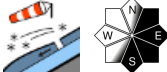


Brittle snowdrifts persist widespread! Atypical FRESH snowdrift accumulations on NORTH-facing slopes.

	<p>forestline</p>	<p>Seetaler Alpen, Südliche Wölzer Tauern, Schladminger Tauern Nord, Nördliche Wölzer Tauern, Ennstaler Alpen, Rottenmanner Tauern, Totes Gebirge, Dachsteingebiet, Gurktaler Alpen, Schladminger Tauern Süd</p>	
	<p>forestline</p>	<p>Westliche Fischbacher Alpen und Grazer Bergland, Östliche Fischbacher Alpen und Wechselgebiet, Mürtzaler Alpen</p>	
	<p>forestline</p>	<p>Mürztsteger Alpen, Hochschwabgebiet, Eisenerzer Alpen, Stub- und Gleinalpe, Seckauer Tauern, Koralpe</p>	

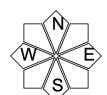
Avalanche problems



Danger ratings

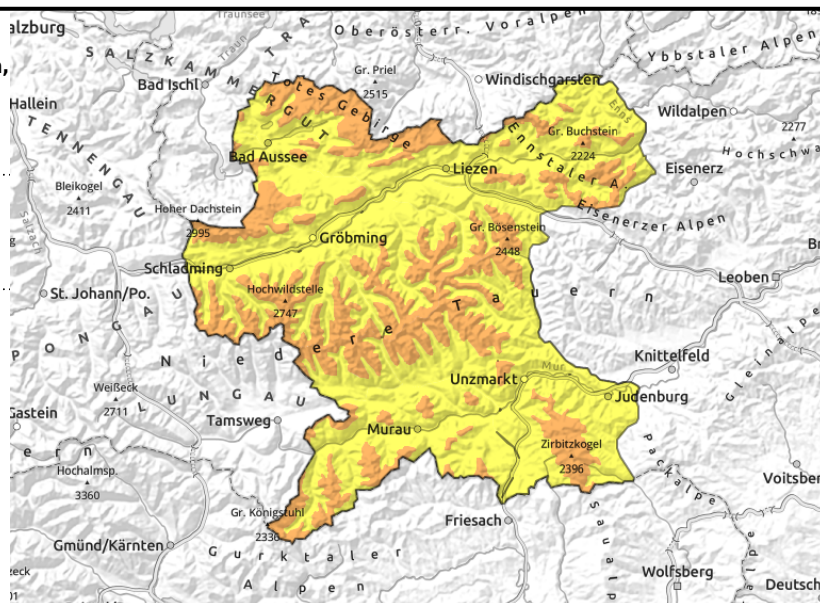
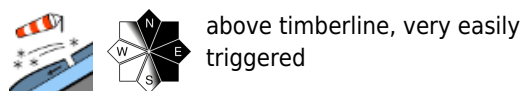


Expositions



09.12.2021

Seetaler Alpen, Südliche Wölzer Tauern, Schladminger Tauern Nord, Nördliche Wölzer Tauern, Ennstaler Alpen, Rottenmanner Tauern, Totes Gebirge, Dachsteingebiet, Gurktaler Alpen, Schladminger Tauern Süd



Caution: trigger-sensitive snowdrifts

In Northern Alps, Niedere Tauern and Gurktal and Seetal Alps, moderate avalanche danger prevails; above the treeline, danger is considerable. Avalanche prone locations are found in eastern and northern aspects. Critical areas lie distant from ridgelines and behind protuberances in the landscape. A slab avalanche can be triggered even by minimum additional loading. Breaking cornices and naturally triggered slab avalanches continue to be possible due to the new amounts of fresh snow. At intermediate altitudes, isolated glide-snow slides are possible on extremely steep grass-covered slopes.

Snowpack structure

On Monday night, surface hoar formed on the surface. The forecast fresh snow has been deposited on a softened layer, thus, an additional potential weak layer threatens. As a result of quickly fluctuating temperatures, the old snowpack is composed of numerous varied layers. Additional weak layers are evident inside the old snowpack. Due to very low temperatures, the snowpack has not been able to settle.

Weather

The peaks will be veiled in fog, snowfall is expected which will regionally be heavy during the morning. In the zone of the Northern Alps, up to 30 cm of fresh snow is anticipated. During the course of the day, snowfall will slacken off, in the Upper Murtal some bright intervals are possible. Temperatures will drop at all altitudes, at 2000 m we can expect -9 degrees. Winds will shift to northwesterly and intensify ongoingly; in the afternoon winds will be brisk to stormy.

Friday:

On Friday, winds will temporarily shift to southwesterly, in the Northern Alps foehn wind will be blowing. In the morning it will be predominantly sunny, in the afternoon cloudbanks will move in from the west. The higher peaks of the Niedere Tauern will be shrouded in fog.

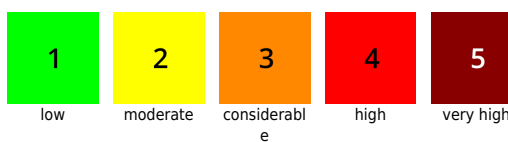
Outlook

Caution: fresh snowdrift accumulations will form again on north-facing slopes on Friday. FOEHN!

Avalanche problems



Danger ratings



Expositions



09.12.2021

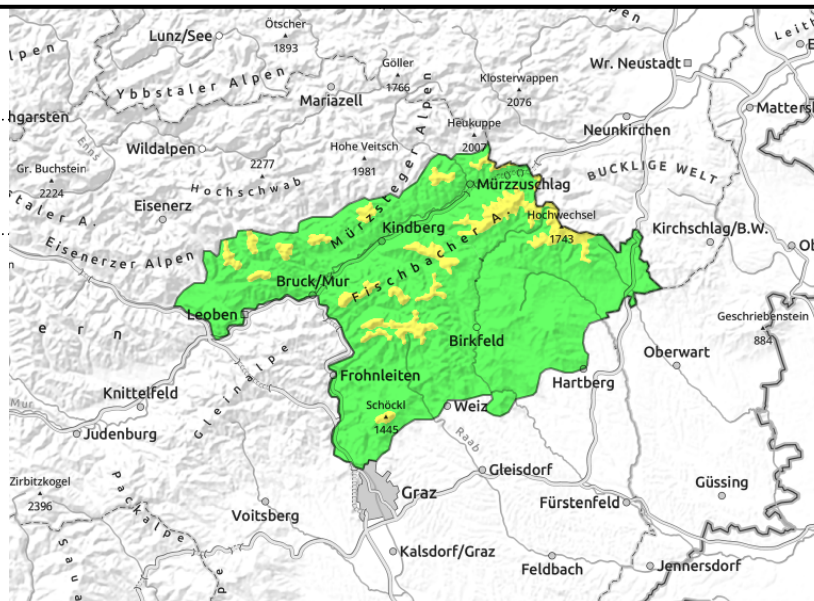
**Westliche Fischbacher Alpen und Grazer Bergland,
Östliche Fischbacher Alpen und Wechselgebiet,
Mürztaler Alpen**



forestline



near ridgelines, in gullies and steep bowls



Northerly winds: freshly generated snowdrifts

Avalanche danger is low. Above the treeline, avalanche danger is moderate. Isolated avalanche prone locations are found behind abrupt changes in the landscape in east-facing and south-facing aspects. Ridgeline zones require special caution. A slab avalanche triggering cannot be ruled out.

Snowpack structure

At high altitudes the snowdrifts have been deposited on a layer of surface hoar. At intermediate altitudes the snowpack was able to stabilize. Surface hoar has formed on the snowpack surface, i.e. another potential weak layer.

For Thursday about 20 cm of fresh snow is forecast. Bonding of the generated snowdrifts to the old snowpack will be inadequate. Overall snow depths are shallower than in the western regions of Austria.

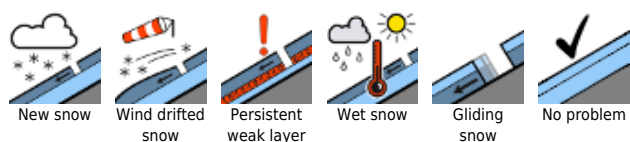
Weather

On Wednesday night, snowfall will set in, which will persist during the day on Thursday. Winds will shift from southerly to northwesterly, then intensify to reach storm-strength. In the mountains it will become significantly colder, midday temperatures at 1500 m will lie at -6 °C, at 2000m at -8 degrees. On Friday, winds will temporarily shift to southwesterly. In the Northern Alps foehn wind will be blowing. In the morning hours sunshine is expected, in the afternoon cloud banks will move in from the west.

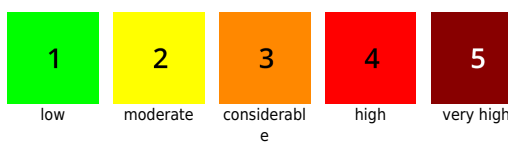
Outlook

Slightly rising avalanche danger.

Avalanche problems



Danger ratings



Expositions



09.12.2021

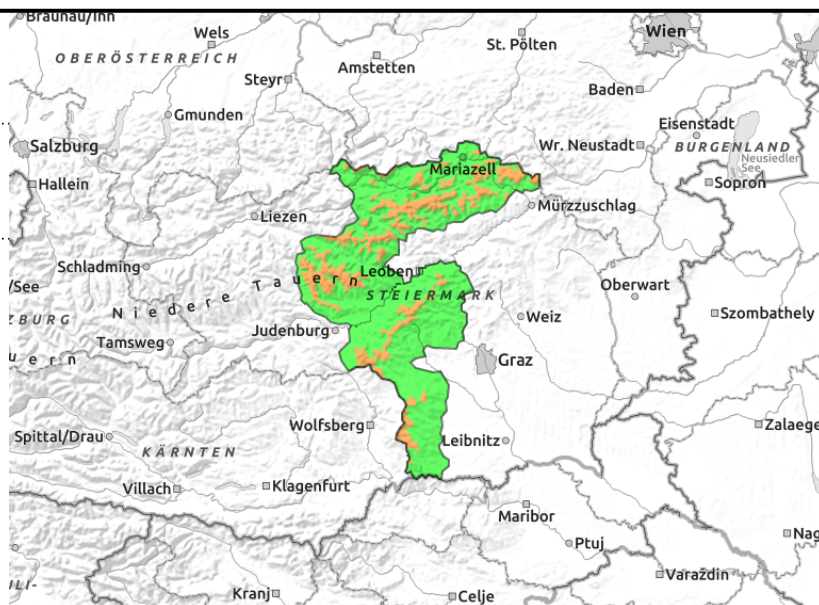
Mürzsteiger Alpen, Hochschwabgebiet, Eisenerzer Alpen, Stub- und Gleinalpe, Seckauer Tauern, Koralpe



forestline



in gullies and steep bowls



Storm winds, fresh snow

Avalanche danger above the treeline is considerable in this region. Freshly generated cornices are unstable. Danger zones focus on northern and eastern aspects, where fresh ridgeline snowdrifts can be triggered even by minimum additional loading. Size 2 avalanches are ordinarily expected.

Snowpack structure

Current weather conditions have a deleterious effect on the snowpack stability. Due to wind fluctuation, both in direction and in strength, snowdrift accumulations will not only be wide-ranging, but also prone to triggering. On Thursday, an additional 20 cm of fresh snow is anticipated. Soft layers in the form of loosely-packed snow, in some places blanketed hoarfrost, and in transition zones to melt-freeze crusts, weaken current snowpack layering.

Weather

On Wednesday night, snowfall will set in and persist throughout the day on Thursday. Winds will shift from southerly to northwesterly.

Winds will intensify measurably, reaching storm strength. It will become noticeably colder in the mountains, midday temperatures at 1500 m will be -6 degrees, at 2000 m -8 degrees.

On Friday, winds will temporarily shift back to southwesterly, foehn wind impact is expected in the Northern Alps. Lots of sunshine during the morning hours, in the afternoon cloudbanks will move in from the west.

Outlook

Slight increase in avalanche danger.

Translated by Jeffrey McCabe, www.creativtrans.com

Avalanche problems



New snow



Wind drifted snow



Persistent weak layer



Wet snow



Gliding snow



No problem

Danger ratings



1

low



2

moderate



3

considerable



4

high



5

very high

Expositions

