
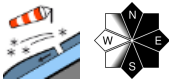

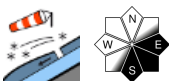

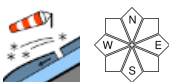


Ongoing brittle snowdrifts widespread. Fresh snowdrifts due to icy, stormy NW winds.

| | | | |
|---|-------------------|--|---|
|  | <p>timberline</p> | <p>Koralpe, Stub- und Glenthalpe, Seetaler Alpen, Südliche Wölzer Tauern, Gurktaler Alpen, Schladminger Tauern Nord, Nördliche Wölzer Tauern, Seckauer Tauern, Eisenerzer Alpen, Ennstaler Alpen, Rottenmanner Tauern, Totes Gebirge, Dachsteingebiet, Schladminger Tauern Süd</p> |  |
|  | <p>timberline</p> | <p>Hochschwabgebiet, Mürzsteger Alpen</p> |  |
|  | <p>timberline</p> | <p>Westliche Fischbacher Alpen und Grazer Bergland, Östliche Fischbacher Alpen und Wechselgebiet, Mürztaler Alpen</p> |  |

Avalanche problems



Danger ratings

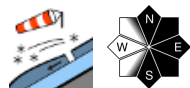
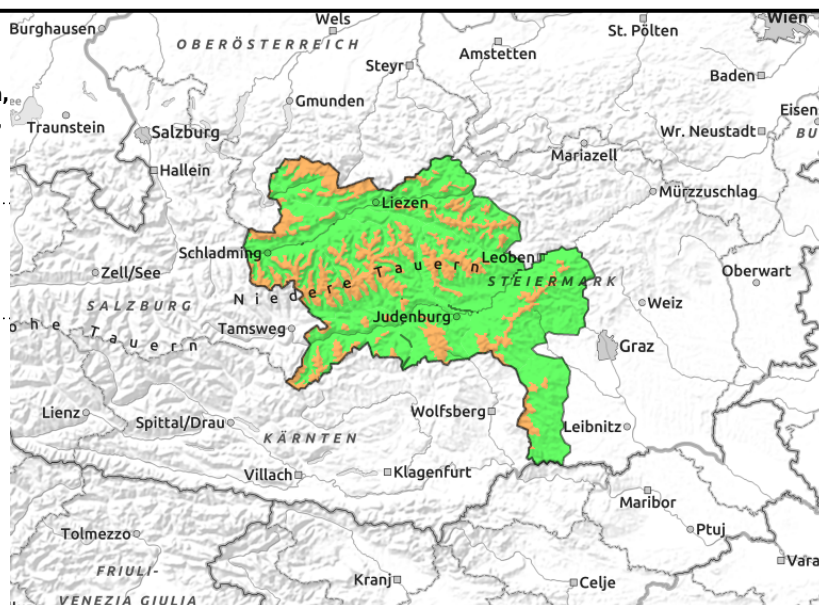


Expositions



07.12.2021

Koralpe, Stub- und Gleinalpe, Seetaler Alpen, Südliche Wölzer Tauern, Gurktaler Alpen, Schladminger Tauern Nord, Nördliche Wölzer Tauern, Seckauer Tauern, Eisenerzer Alpen, Ennstaler Alpen, Rottenmanner Tauern, Totes Gebirge, Dachsteingebiet, Schladminger Tauern Süd



Caution: brittle snowdrifts!

Due to temperatures like in deep winter, avalanche danger levels are being preserved. Danger above the timberline in the regions Dachstein, Totes Gebirge, Niedere Tauern as far as Koralpe is considerable. Avalanche prone locations are found in east and north aspects. Good areas (unbonded cold powder) and treacherous areas (wind-loaded slopes) lie immediately adjacent to each other. Wherever snowdrifts were deposited, the likelihood of slabs triggering is high. Older snowdrift accumulations and freshly generated drifts can be triggered even by minimum additional loading. The released slab can fracture down to more deeply embedded layers. Danger zones are difficult to recognize. Experience is imperative in backcountry terrain.

Naturally triggered avalanches: as a result of additional wind-loaded slopes, naturally triggered slab avalanches are possible.

Snowpack structure

Due to deep-wintery temperatures the snowpack has not been able to settle. On the weekend, 20-30 cm of fresh snow was registered in the region, deposited on top of a layer of surface hoar. On leeward slopes there is much more bonded snow.

However, there are also areas where the snow is loosely-packed. The old snowpack is weakened deeper down by soft and hard layers.

Weather

A weak perturbation will bring poor visibility to the Northern Alps and some snowfall starting at midday. On the southern flank of the Alps, compact cloudbanks will pass through but summits will remain free in the morning hours. As of midday, the highest peaks will disappear in fog. At high altitudes a storm-strength, icy-cold NW wind will be blowing. At 2000 m: -9 degrees at midday.

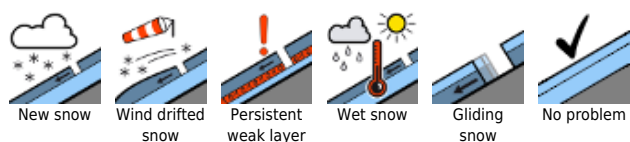
Wednesday

In the morning, extended sunny spells. In the afternoon, cloud cover will move in from the southwest and cover the land. Brisk to strong-velocity SW winds will raise temperatures slightly at all altitudes.

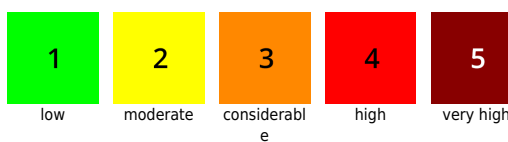
Outlook

Wind directions will shift to southwesterly. Caution: fresh snowdrifts will accumulate on north-facing

Avalanche problems



Danger ratings



Expositions



07.12.2021

slopes.

Avalanche problems



New snow



Wind drifted
snow



Persistent
weak layer



Wet snow



Gliding
snow



No problem

Danger ratings



1

low



2

moderate



3

considerabl
e



4

high



5

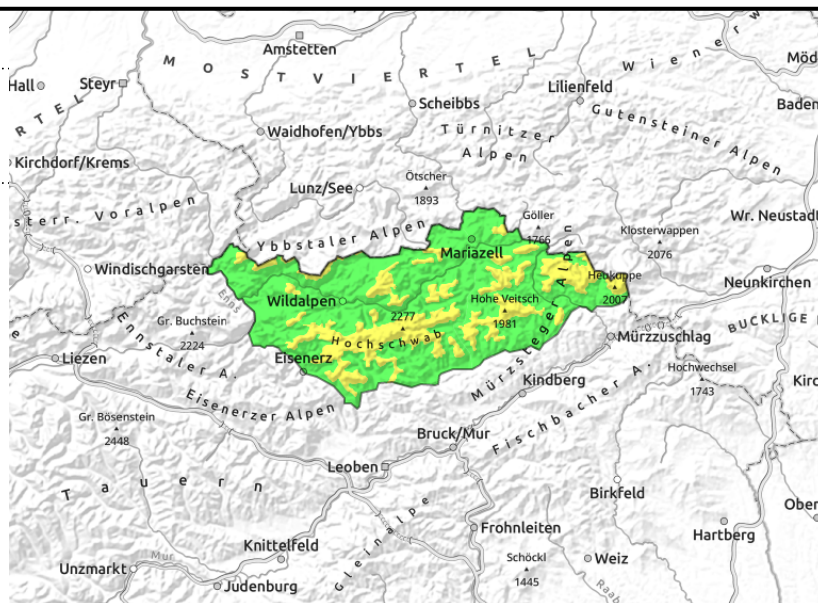
very high

Expositions



07.12.2021

Hochschwabgebiet, Mürzsteger Alpen



Fresh snowdrift accumulations

Avalanche prone locations lie in eastern and southern aspects, particularly in ridgeline terrain and behind abrupt changes in the landscape. Older snowdrift accumulations and freshly generated drifts can be triggered even by minimum additional loading.

Snowpack structure

On Sunday there was 20 cm of fresh snow registered, deposited atop surface hoar or a hardened old snowpack surface. At high altitudes in northern and eastern aspects, older snowdrift masses have been deposited on top of a soft layer. In the Hochschwab region there is much less snow than in the Niedere Tauern.

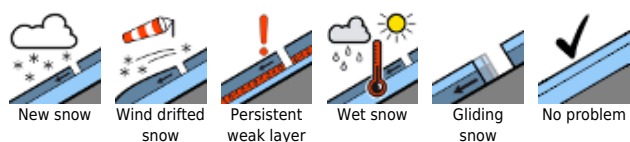
Weather

A weak perturbation will bring poor visibility to the Northern Alps and some snowfall starting at midday. On the southern flank of the Alps compact cloudbanks will pass through, but summits will remain free in the morning hours. As of midday, the highest peaks will disappear in fog. At high altitudes a storm-strength, icy-cold NW wind will be blowing. At 2000 m: -9 degrees at midday.

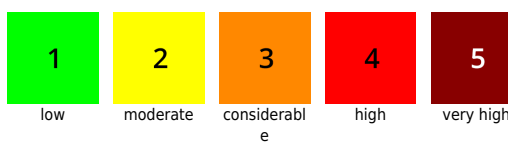
Outlook

No significant change in avalanche danger levels is expected.

Avalanche problems



Danger ratings



Expositions

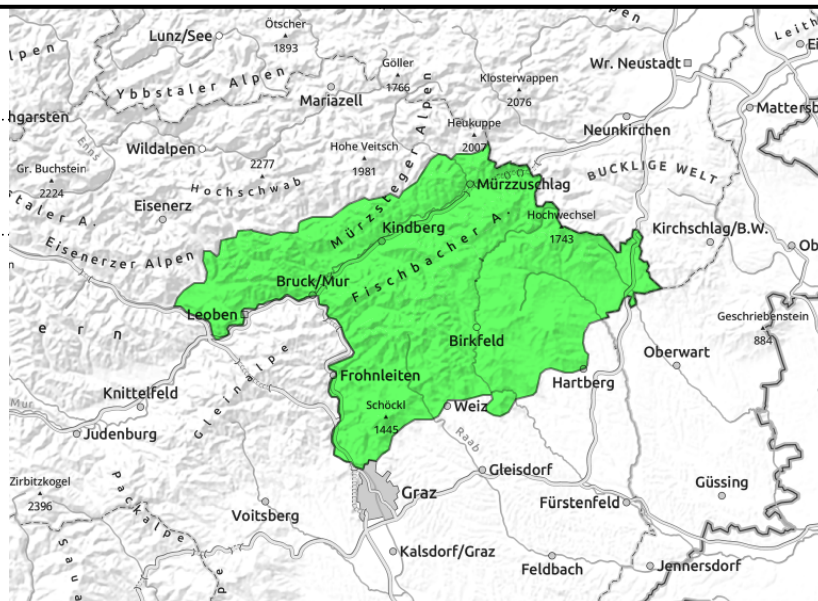


07.12.2021

Westliche Fischbacher Alpen und Grazer Bergland, Östliche Fischbacher Alpen und Wechselgebiet, Mürztaler Alpen



behind abrupt changes in the terrain



Patches of fresh snowdrifts

Avalanche danger is low. Isolated avalanche prone locations are found behind abrupt changes in the terrain. Requiring special caution: ridgeline zones. A slab avalanche triggering cannot be ruled out.

Snowpack structure

By Sunday afternoon, up to 20 cm of snowfall was registered. At lower altitudes, meadows were blanketed with snow, and at intermediate altitudes the snow was deposited on top of a settled old snowpack. In some places, the surface hoar was blanketed.

Weather

On the southern flank of the Alps and in eastern regions of Styria, compact cloudbanks will pass through, but summits will remain free in the morning hours. As of midday, higher peaks will disappear in fog. At high altitudes a storm-strength, icy NW wind will be blowing. At 2000 m: -9 degrees at midday.

Outlook

Slight increase in avalanche danger levels is expected.

Translated by Jeffrey McCabe, www.creativtrans.com

Avalanche problems



New snow



Wind drifted snow



Persistent weak layer



Wet snow



Gliding snow



No problem

Danger ratings



1

low



2

moderate



3

considerable



4

high



5

very high



Expositions