

Fresh snow and snowdrifts! Danger of slab avalanches!

	<p>timberline</p>	<p>Totes Gebirge, Dachsteingebiet, Schladminger Tauern Nord, Nördliche Wölzer Tauern, Rottenmanner Tauern, Ennstaler Alpen, Schladminger Tauern Süd</p>		
	<p>timberline</p>	<p>Südliche Wölzer Tauern, Seckauer Tauern, Eisenerzer Alpen, Hochschwabgebiet</p>		
	<p>timberline</p>	<p>Mürzteger Alpen, Mürztaler Alpen, Westliche Fischbacher Alpen und Grazer Bergland, Östliche Fischbacher Alpen und Wechselgebiet</p>		
	<p>timberline</p>	<p>Koralpe, Stub- und Gleinalpe, Gurktaler Alpen, Seetaler Alpen</p>		

Avalanche problems



Danger ratings

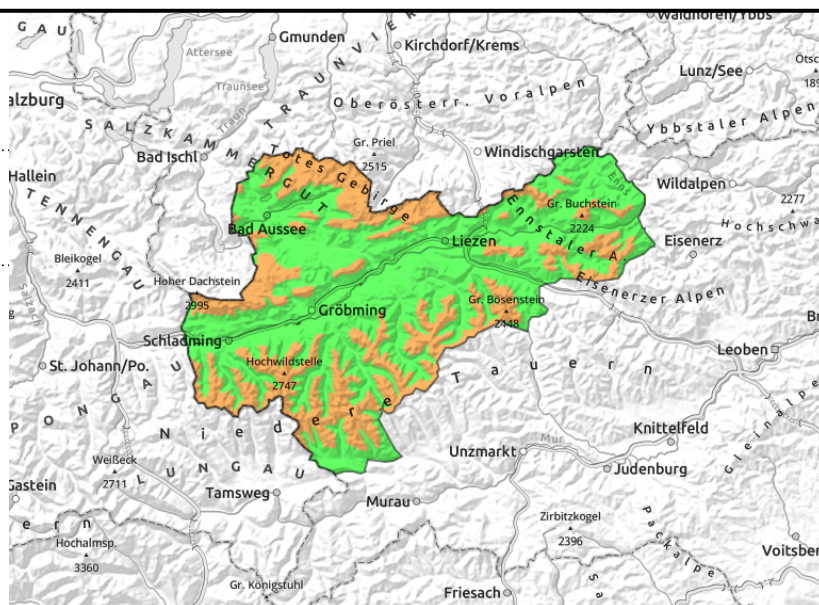
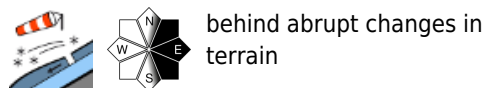
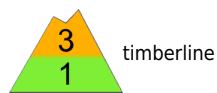


Expositions



05.12.2021

Totes Gebirge, Dachsteingebiet, Schladminger Tauern Nord, Nördliche Wölzer Tauern, Rottenmanner Tauern, Ennstaler Alpen, Schladminger Tauern Süd



Fresh, brittle snowdrifts!

Avalanche danger in the regions Dachstein, Totes Gebirge, northern Niedere Tauern as far as the Ennstal Alps is **Considerable** above the timberline. Avalanche prone locations are located in eastern and northern aspects. Older snowdrift accumulations and freshly generated drifts can be triggered even by **minimum additional loading**. A slab can fracture down to more **deeply embedded layers** in the snowpack.

Snowpack structure

Rising temperatures over the last 24 hours have generally had a positive effect on the snowpack, which was able to settle somewhat. At high altitudes in northern and eastern aspects, older snowdrift masses lie deposited on top of a soft layer of snow.

On Friday night in the northern barrier cloud zones, surface hoar formed. The forecast **fresh snow and snowdrifts** will be deposited on top of the **just formed surface hoar**. Bonding will be inadequate.

At intermediate and low altitudes the snow cover has settled. In some places a crust formed, which is not capable of bearing loads.

Weather

On Sunday it will turn wintery. Snowfall is expected over widespread areas, and a cold northerly wind will be blowing. In the northern barrier zones 20-30 cm of fresh snow is anticipated. Visibility will be severely reduced. Compared to Saturday, it will turn measurably colder, at 2000 m, -8 degrees.

Outlook

The danger of slab avalanches will remain upright

Avalanche problems



Danger ratings

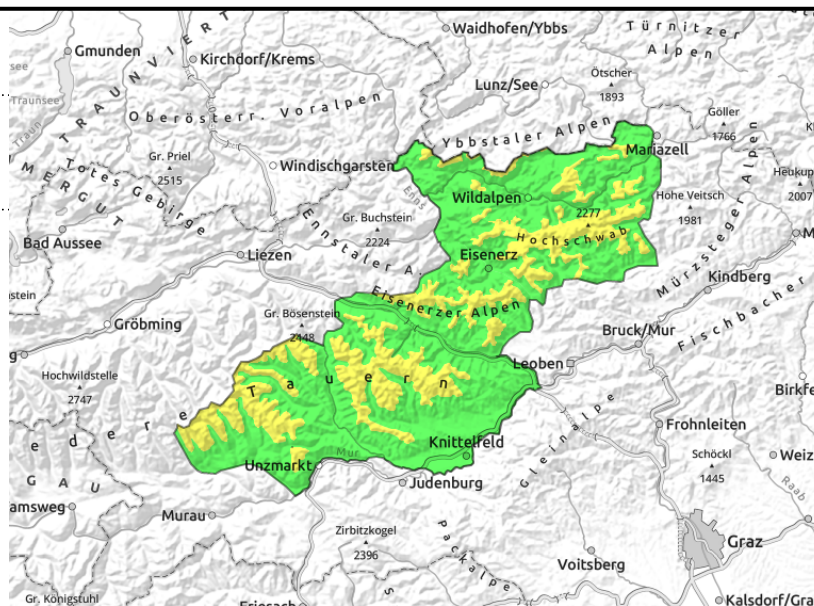
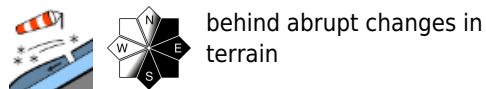


Expositions



05.12.2021

Südliche Wölzer Tauern, Seckauer Tauern, Eisenerzer Alpen, Hochschwabgebiet



Northerly winds! Freshly generated snowdrifts!

Avalanche prone locations are found on east-facing and south-facing slopes. Older snowdrift accumulations and freshly generated drifts can be triggered even by minimum additional loading. Generally, Size-2 avalanches are anticipated.

Snowpack structure

Rising temperatures over the last 24 hours have generally had a positive effect on the snowpack, which was able to settle somewhat. At high altitudes in northern and eastern aspects, older snowdrift masses lie deposited on top of a soft layer of snow.

On Friday night in the northern barrier cloud zones, surface hoar formed. The forecast **fresh snow and snowdrifts** will accordingly be deposited on top of the **just formed surface hoar**. Bonding will be inadequate.

Weather

On Sunday it will turn wintery. Snowfall is expected over widespread areas, and a cold northerly wind will be blowing. In the northern barrier zones 20-30 cm of fresh snow is anticipated. Visibility will be severely reduced. Compared to Saturday, it will turn measurably colder, at 2000 m, -8 degrees.

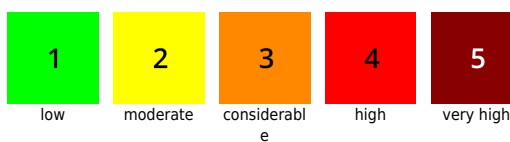
Outlook

No significant change in avalanche danger levels is anticipated.

Avalanche problems



Danger ratings



Expositions

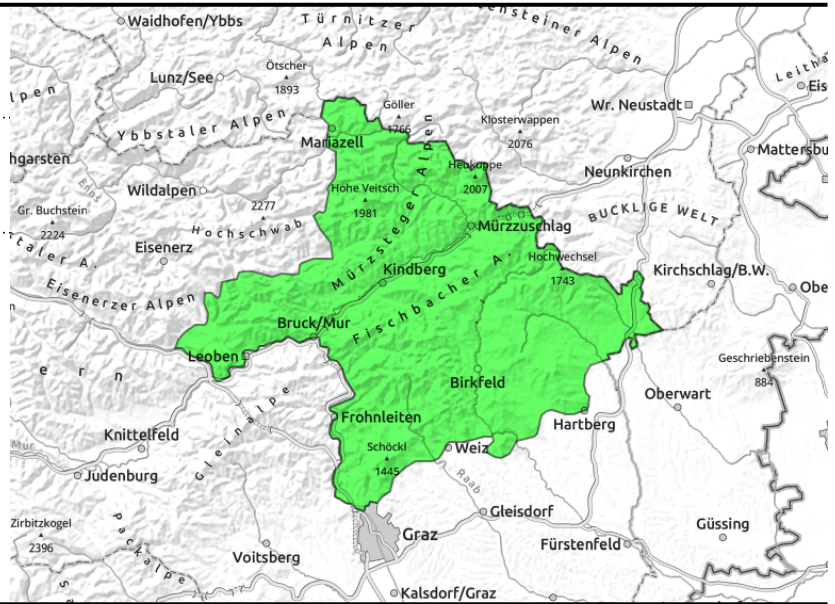


05.12.2021

Mürzsteger Alpen, Mürztaler Alpen, Westliche Fischbacher Alpen und Grazer Bergland, Östliche Fischbacher Alpen und Wechselgebiet



behind abrupt changes in terrain



Fresh snowdrifts!

Avalanche danger is low. As a result of approaching snowfall, isolated danger zones will be generated on east-facing and south-facing slopes, particularly perilous are the ridgeline zones.

Snowpack structure

The snowfall of this last week was deposited on top of moist ground. There is 15-25 cm of snow on the ground. At low altitudes it has already become green again.

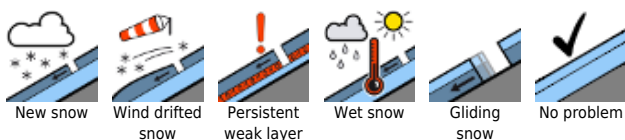
Weather

On Sunday it will turn wintery. Snowfall is expected over widespread areas, and a cold northerly wind will be blowing. Visibility will be severely reduced. Compared to Saturday, it will turn measurably colder, at 2000 m, -8 degrees.

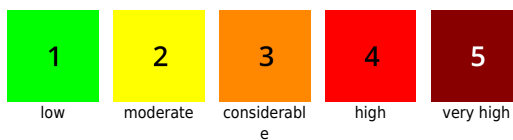
Outlook

No significant change in avalanche danger levels is anticipated.

Avalanche problems



Danger ratings

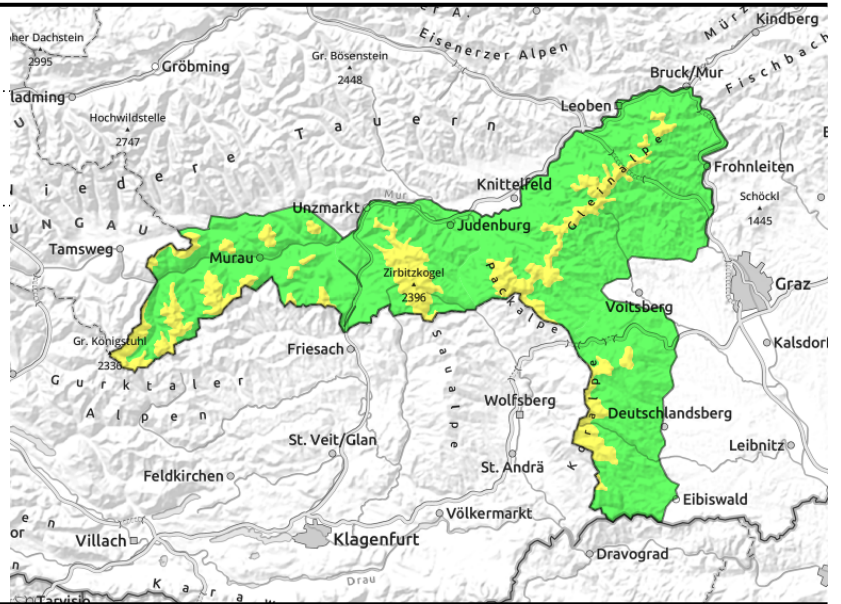
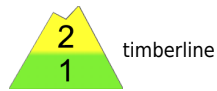


Expositions



05.12.2021

Koralpe, Stub- und Gleinalpe, Gurktaler Alpen, Seetaler Alpen



Fresh snowdrifts!

Avalanche danger between Turrach and Koralpe is moderate above the timberline. Isolated avalanche prone locations are to be found on east-facing slopes, where a slab avalanche cannot be ruled out.

Snowpack structure

At the start of the season there has been up to 60 cm of snowfall registered. The snowpack has now settled. On the Koralpe and near the Zirbitzkogel, winds have blown the ridges completely bare of snow. Snowdrifts are found on east-facing slopes.

Weather

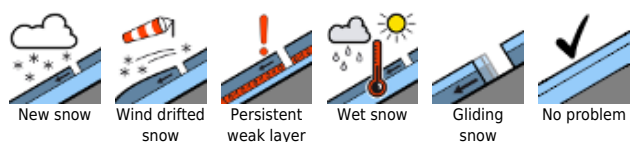
On Sunday it will turn wintery. Snowfall is expected over widespread areas, and a cold northerly wind will be blowing. Visibility will be severely reduced. Compared to Saturday, it will turn measurably colder, at 2000 m, -8 degrees.

Outlook

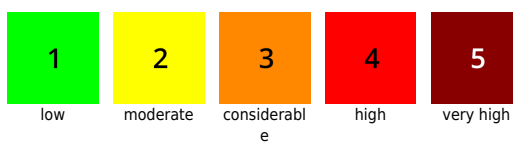
Danger of slab avalanches is expected to increase slightly.

Translated by Jeffrey McCabe, www.creativtrans.com

Avalanche problems



Danger ratings



Expositions

