







Snowdrifts at high altitude

	<p>1900 m</p>	<p>Totes Gebirge, Dachsteingebiet, Schladminger Tauern Nord, Nördliche Wölzer Tauern, Rottenmanner Tauern, Schladminger Tauern Süd, Südliche Wölzer Tauern</p>	
	<p>timberline</p>	<p>Mürzsteger Alpen, Hochschwabgebiet, Eisenerzer Alpen, Seckauer Tauern, Seetaler Alpen, Gurktaler Alpen, Stub- und Gleinalpe, Koralpe, Ennstaler Alpen</p>	
		<p>Mürztaler Alpen, Östliche Fischbacher Alpen und Wechselgebiet, Westliche Fischbacher Alpen und Grazer Bergland</p>	

Avalanche problems



Danger ratings

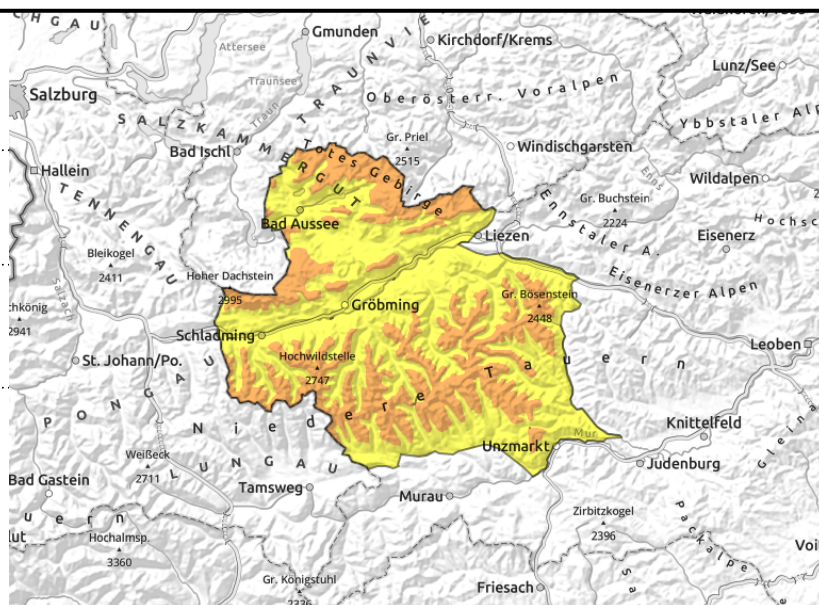
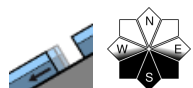
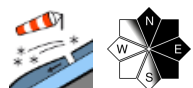


Expositions



04.12.2021

Totes Gebirge, Dachsteingebiet, Schladminger Tauern Nord, Nördliche Wölzer Tauern, Rottenmanner Tauern, Schladminger Tauern Süd, Südliche Wölzer Tauern



Avalanche prone locations due to snowdrifts at high altitudes from place to place

On Friday, fresh snowdrift accumulations were generated above the timberline which become increasingly triggerable with ascending altitude. Main danger zones start at 1900 m in N/E/S aspects. Another danger: small-to-medium sized glide-snow avalanches which can trigger naturally on steep grass-covered slopes.

Snowpack structure

In the Northern Alps between Dachstein, Totes Gebirge and Ennstal Alps as well as on the northern flank of the Schladming Tauern, there is currently 80 cm of snow on the ground which has fallen since 25 November. Storm-strength winds from varying directions have created windblown crests and ridges, near the ridgelines and in gullies and bowls the drifts have filled every cavity. Weak layers took shape as soft intermediate layers which formed during periods with much wind and little precipitation. As a result of the shift from cold to warm temperatures the snowpack was able to stabilize somewhat, a melt-freeze crust formed on the surface. Through milder temperatures the coming warm front will make the snow moist again.

Weather

Following partly clear skies in the early part of the night, cloud cover will become heavier as the warm front moves in on Saturday morning, a bit of light snowfall is possible in the early phase. By midday, clouds will become heavier, further precipitation is expected to follow, with rainfall up to 1500 m. Temperatures will rise significantly, to about 0 °C at midday at 2000 m; at 1500 m to +2 degrees. Light to moderate westerly to southwesterly winds will prevail.

On Sunday a cold front will follow in its wake, with further precipitation accompanied by storm-strength northwesterly winds. Temperatures will drop approximately 10 degrees, the snowfall level will rapidly descend to low lying areas again.

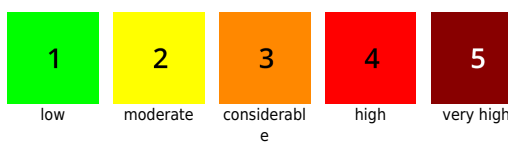
Outlook

Through the sustained drop in temperature on Sunday, the moist snow will be able to consolidate again. However, fresh snowdrifts will again be deposited on the melt-freeze encrusted snowpack

Avalanche problems



Danger ratings



Expositions



04.12.2021

surface. Thus, avalanche danger levels will remain unchanged.

Avalanche problems



New snow



Wind drifted
snow



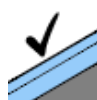
Persistent
weak layer



Wet snow

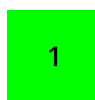


Gliding
snow



No problem

Danger ratings



1

low



2

moderate



3

considerabl
e



4

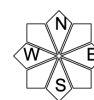
high



5

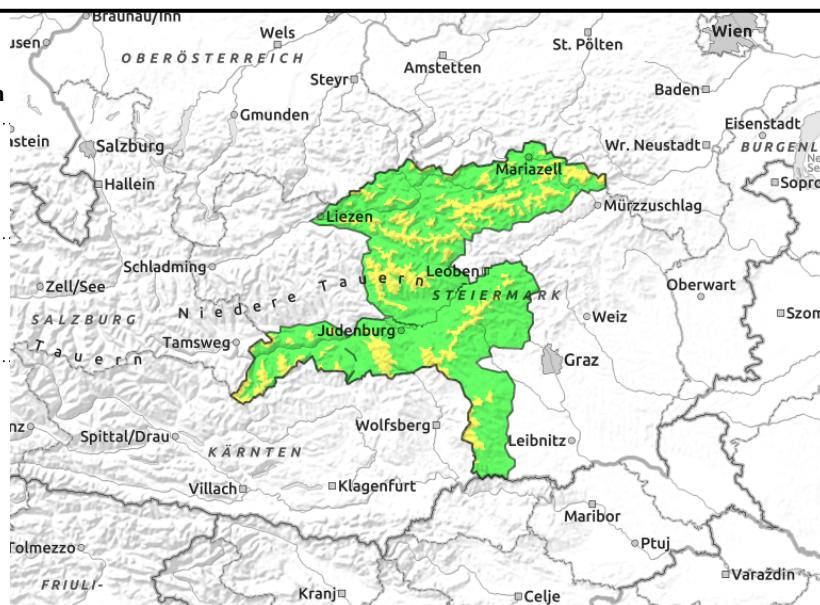
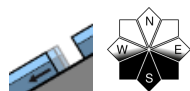
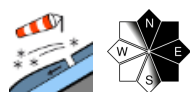
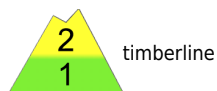
very high

Expositions



04.12.2021

Mürzsteiger Alpen, Hochschwabgebiet, Eisenerzer Alpen, Seckauer Tauern, Seetaler Alpen, Gurktaler Alpen, Stub- und Gleinalpe, Koralpe, Ennstaler Alpen



Avalanche prone locations due to snowdrifts at high altitudes from place to place

On Friday, fresh snowdrift accumulations were generated above the timberline which with ascending altitude become increasingly triggerable. Main danger zones start at 1900 m in N/E/S aspects. Another danger: small-to-medium sized glide-snow avalanches which can trigger naturally on steep grass-covered slopes.

Snowpack structure

In the Northern Alps between Dachstein, Totes Gebirge and Ennstal Alps as well as on the northern flank of the Schladming Tauern, there is currently 80 cm of snow on the ground which has fallen since 25 November. Storm-strength winds from varying directions have created windblown crests and ridges, near the ridgelines and in gullies and bowls the drifts have filled every cavity. Weak layers formed as soft intermediate layers which formed in periods with much wind and little precipitation. As a result of the shift from cold to warm temperatures the snowpack was able to stabilize somewhat, a melt-freeze crust formed on the surface. With the milder temperatures the coming warm front will make the snow moist again.

Weather

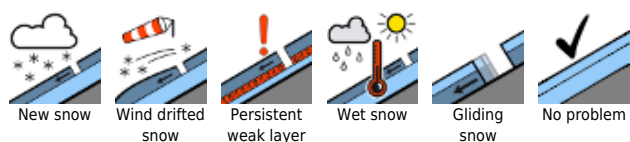
Following partly clear skies in the early part of the night, cloud cover will become heavier as the warm front moves in on Saturday morning, a bit of light snowfall is possible in the early phase. By midday, clouds will become heavier, further precipitation is expected to follow, with rainfall up to 1500 m. Temperatures will rise significantly, to about 0 °C at 2000 m at midday; at 1500 m to +2 degrees. Light to moderate westerly to southwesterly winds will prevail.

On Sunday a cold front will follow in its wake, with further precipitation accompanied by storm-strength northwesterly winds. Temperatures will drop approximately 10 degrees, the snowfall level will rapidly descend to low lying areas again.

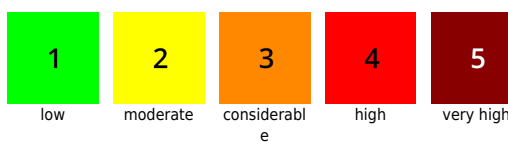
Outlook

Through the sustained drop in temperature on Sunday, the moist snow will be able to consolidate again. However, fresh snowdrifts will again be deposited on the melt-freeze encrusted snowpack

Avalanche problems



Danger ratings



Expositions



04.12.2021

surface. Thus, avalanche danger levels will remain unchanged.

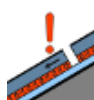
Avalanche problems



New snow



Wind drifted
snow



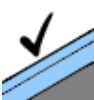
Persistent
weak layer



Wet snow



Gliding
snow



No problem

Danger ratings



1

low



2

moderate



3

considerabl
e



4

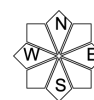
high



5

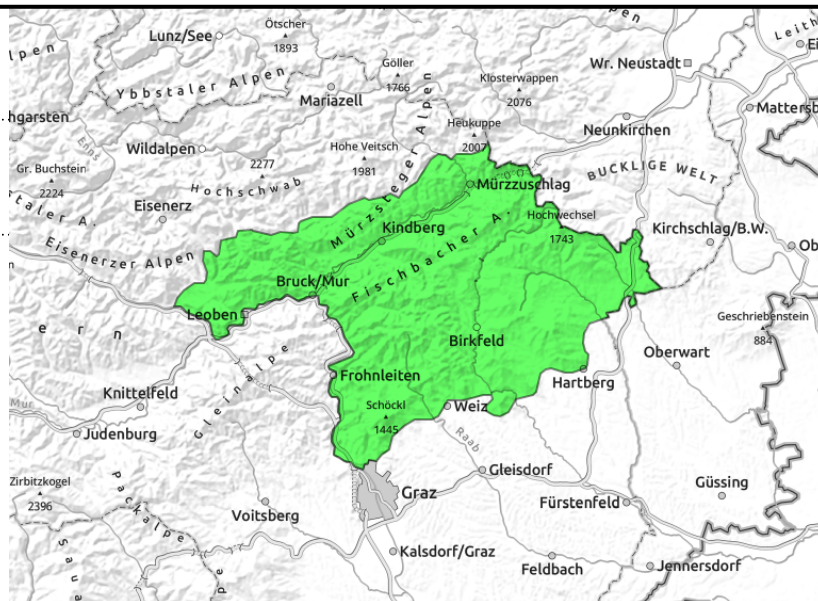
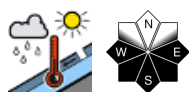
very high

Expositions



04.12.2021

Mürztaler Alpen, Östliche Fischbacher Alpen und Wechselgebiet, Westliche Fischbacher Alpen und Grazer Bergland



Wet-snow problem

Low avalanche danger prevails in this region. Only on steep grass-covered and leaf-bestrewn slopes at low altitudes can small-sized, wet slides trigger naturally.

Snowpack structure

In the Graz mountains, Mürztal and Fischbach Alps and the Wechsel region, there is 15-30 cm of snow on the ground at 1100 m which has fallen since the onset of winter on 25 November. Small snowdrift masses cannot be ruled out above the timberline. Due to the higher temperatures on Wednesday the snowpack was able to settle and the snow became moist up to about 1400 m. Through the following drop in temperatures on Thursday, a shallow melt-freeze crust formed on the surface which was then blanketed by a thin layer of fresh snow on Friday.

Weather

Following partially clear skies in the early part of the night, cloud cover on Saturday morning will increase as a warm front passes through. By midday the clouds will become heavy, minor precipitation will follow in the afternoon (snowfall level temporarily ascending to 1600 m). Temperatures will also rise significantly, to +4 °C at 1500 m at midday, +1 degree at 1000 m. Light to moderate westerly winds will prevail.

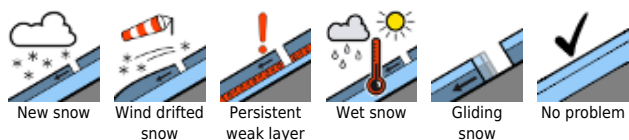
On Sunday a cold front will follow in its wake bringing additional precipitation, accompanied by storm-strength northwesterly winds. The snowfall level will rapidly drop down to low lying areas.

Outlook

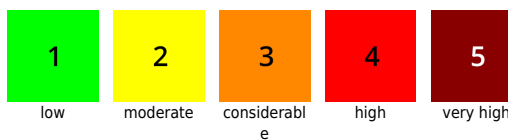
No change in danger assessments.

Translated by Jeffrey McCabe, www.creativtrans.com

Avalanche problems



Danger ratings



Expositions

