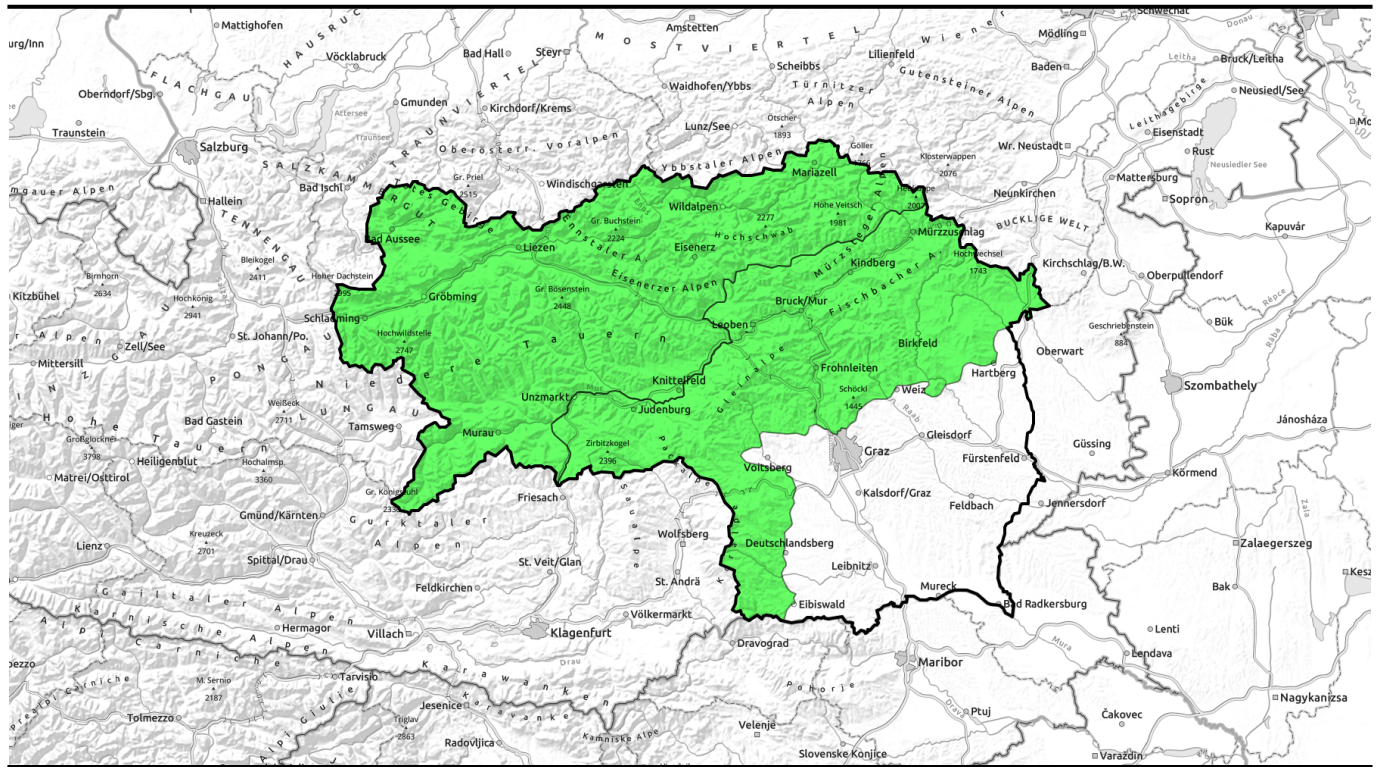


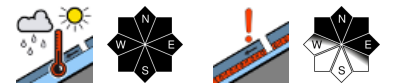
23.04.2021, morning



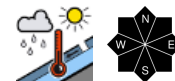
Stable, sunny mountain weather - daytime rise in avalanche danger



Dachsteingebiet, Totes Gebirge, Schladminger Tauern, Nördliche Wölzer Tauern, Südliche Wölzer Tauern, Rottenmanner Tauern, Seckauer Tauern, Ennstaler Alpen, Eisenerzer Alpen, Hochschwabgebiet, Mürzsteger Alpen, Gurktaler Alpen



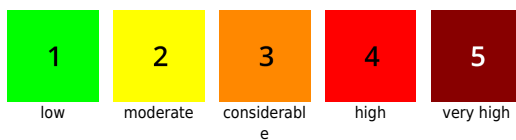
Seetaler Alpen, Stub- und Gleinalpe, Koralpe, Westliche Fischbacher Alpen und Grazer Bergland, Östliche Fischbacher Alpen und Wechselgebiet, Mürztaler Alpen



Avalanche problems



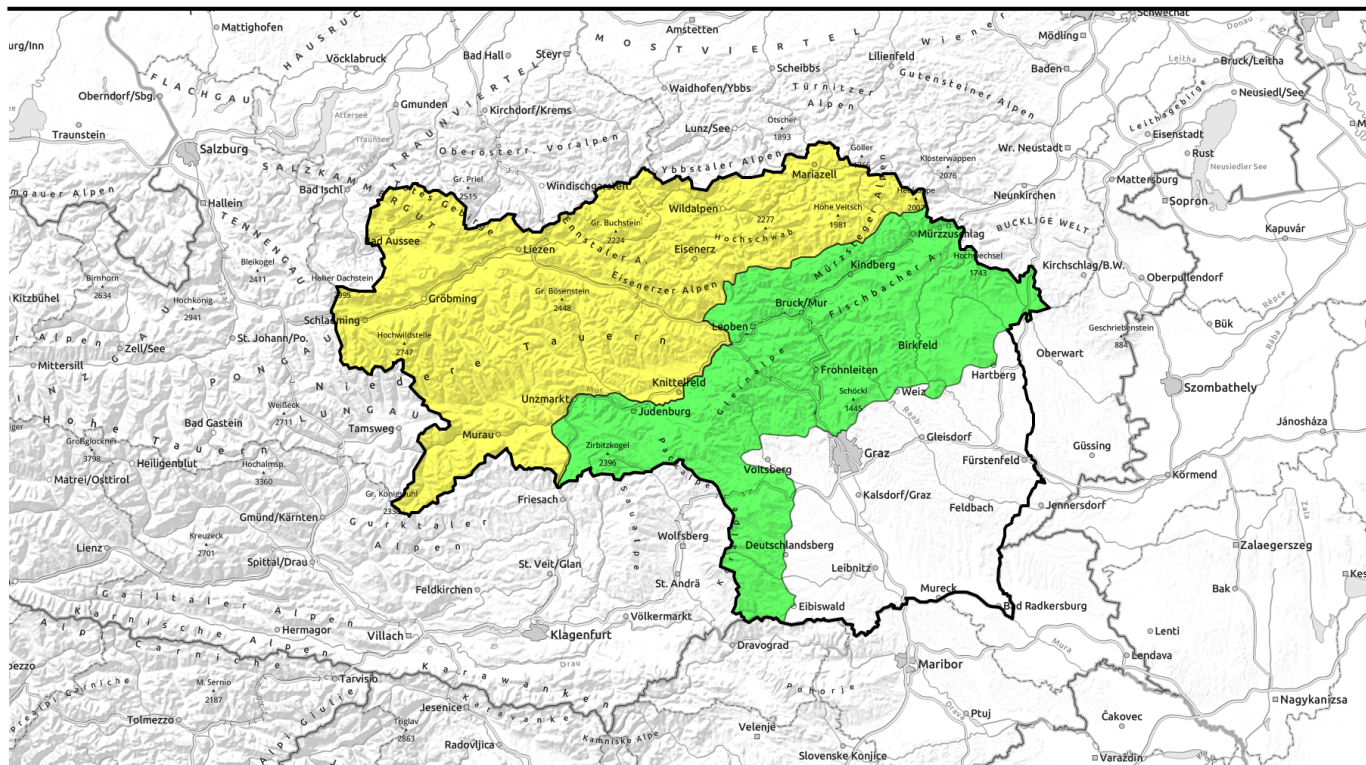
Danger ratings



Expositions



23.04.2021, afternoon



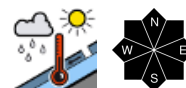
Stabiles und sonniges Bergwetter - tageszeitlicher Anstieg der Lawinengefahr



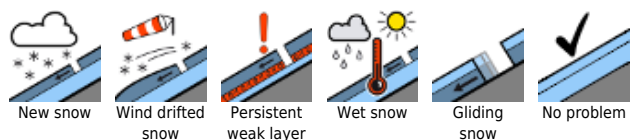
Dachsteingebiet, Totes Gebirge, Schladminger Tauern, Nördliche Wölzer Tauern, Südliche Wölzer Tauern, Rottenmanner Tauern, Seckauer Tauern, Ennstaler Alpen, Eisenerzer Alpen, Hochschwabgebiet, Mürzteger Alpen, Gurktaler Alpen



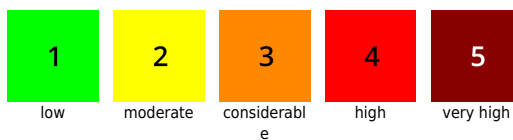
Seetaler Alpen, Stub- und Gleinalpe, Koralpe, Westliche Fischbacher Alpen und Grazer Bergland, Östliche Fischbacher Alpen und Wechselgebiet, Mürztaler Alpen



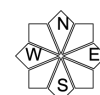
Avalanche problems



Danger ratings

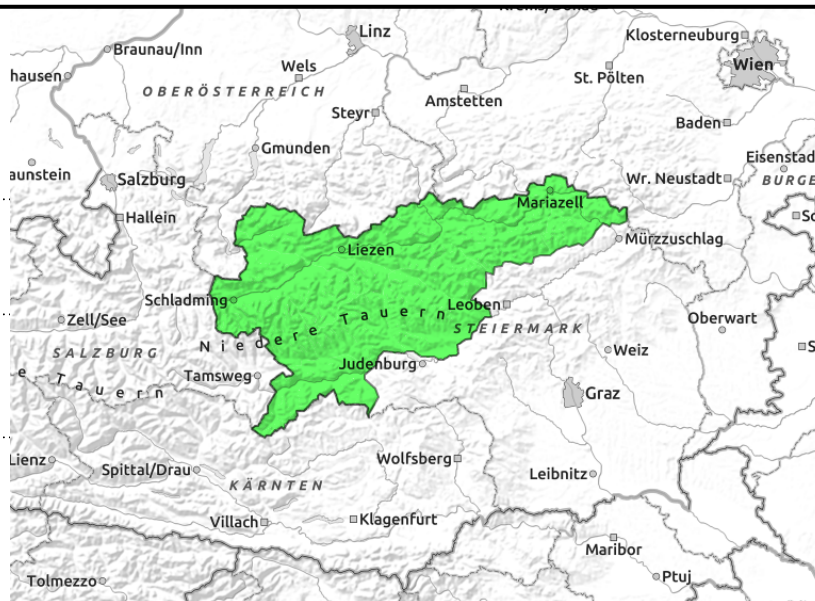


Expositions



23.04.2021, morning

Dachsteingebiet, Totes Gebirge, Schladminger Tauern, Nördliche Wölzer Tauern, Südliche Wölzer Tauern, Rottenmanner Tauern, Seckauer Tauern, Ennstaler Alpen, Eisenerzer Alpen, Hochschwabgebiet, Mürzsteger Alpen, Gurktaler Alpen



from solar radiation and daytime warming



isolated high-altitude shady places

Caution: increasingly frequent wet-snow activity and isolated danger zones at high altitude

Avalanche danger will rise to moderate during the course of the day. On very steep slopes, the danger of wet loose-snow avalanches will rise during the course of the day due to increased solar radiation. In the regions where recent snowfall has been heavy, and where last week's snowfall fell on bare ground and on very steep grassy slopes, medium-sized glide-snow avalanches can be expected. Under additional loading, dry-snow slab avalanches (due to old-snow problem) are limited to shady ridgeline terrain at high altitude. In high-altitude steep terrain there are fresh, thin snowdrift patches which endanger forcing skiers to take a fall.

Snowpack structure

On Thursday, repeated thunderstorm-like rainfall, snowfall, graupel showers are expected. At high altitudes, a thin, mostly wind-impacted layer has been deposited on the surface, and repeatedly moistened. On Thursday night, skies will clear, the snowpack surface will regain firmness (to differing degrees, depending on altitude) and often form a crust capable of bearing loads in early morning. During the daytime the powerful radiation and superficial moistening will continue. Snow will lose firmness and stability, become heavy, at low altitudes wet to rotten. In isolated cases in the old snow there are still weak layers for slab avalanches (in transitions from the fresh layer to the compact old snowpack), in shady terrain above 2000 m. Water seepage into the snowpack has created a lubricating film at ground level which enhances gliding snow activity over the ground.

Weather

Following a night of clear skies, stable and very sunny weather awaits us on Friday. In the morning, cloudless skies, the clouds in the afternoon will be harmless. Strong westerly winds to start with on the eastern rim of the Alps will soon slacken off. Temperatures will rise. At 2000 m. from -5 to +2 degrees; at 1500 m, from -3 to +4 degrees

Outlook

Also on Saturday, weather conditions in the mountains will be pleasant and low in cloud, also somewhat milder. Following a night of clear skies, there will be a new daily cycle of avalanche danger

Avalanche problems



Danger ratings



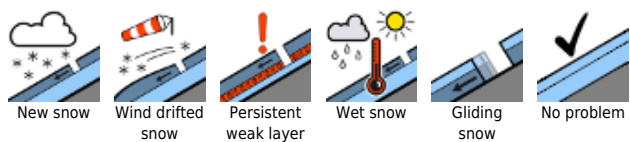
Expositions



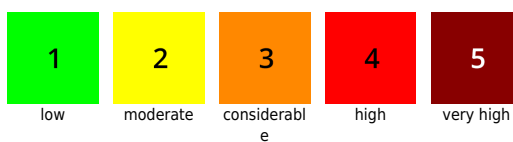
23.04.2021, morning

active.

Avalanche problems



Danger ratings



Expositions



23.04.2021, afternoon

Dachsteingebiet, Totes Gebirge, Schladminger Tauern, Nördliche Wölzer Tauern, Südliche Wölzer Tauern, Rottenmanner Tauern, Seckauer Tauern, Ennstaler Alpen, Eisenerzer Alpen, Hochschwabgebiet, Mürzsteger Alpen, Gurktaler Alpen



from solar radiation and daytime warming



isolated high-altitude shady places

Caution: increasingly frequent wet-snow activity and isolated danger zones at high altitude

Avalanche danger will rise to moderate during the course of the day. On very steep slopes, the danger of wet loose-snow avalanches will rise during the course of the day due to increased solar radiation. In the regions where recent snowfall has been heavy, and where last week's snowfall fell on bare ground and on very steep grassy slopes, medium-sized glide-snow avalanches can be expected. Under additional loading, dry-snow slab avalanches (due to old-snow problem) are limited to shady ridgeline terrain at high altitude. In high-altitude steep terrain there are fresh, thin snowdrift patches which endanger forcing skiers to take a fall.

Snowpack structure

On Thursday, repeated thunderstorm-like rainfall, snowfall, graupel showers are expected. At high altitudes, a thin, mostly wind-impacted layer has been deposited on the surface, and repeatedly moistened. On Thursday night, skies will clear, the snowpack surface will regain firmness (to differing degrees, depending on altitude) and often form a crust capable of bearing loads in early morning. During the daytime the powerful radiation and superficial moistening will continue. Snow will lose firmness and stability, become heavy, at low altitudes wet to rotten. In isolated cases in the old snow there are still weak layers for slab avalanches (in transitions from the fresh layer to the compact old snowpack), in shady terrain above 2000 m. Water seepage into the snowpack has created a lubricating film at ground level which enhances gliding snow activity over the ground.

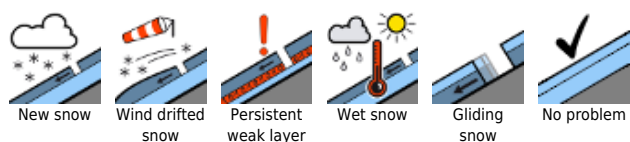
Weather

Following a night of clear skies, stable and very sunny weather awaits us on Friday. In the morning, cloudless skies, the clouds in the afternoon will be harmless. Strong westerly winds to start with on the eastern rim of the Alps will soon slacken off. Temperatures will rise. At 2000 m. from -5 to +2 degrees; at 1500 m, from -3 to +4 degrees

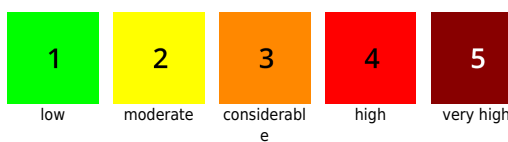
Outlook

Also on Saturday, weather conditions in the mountains will be pleasant and low in cloud, also somewhat milder. Following a night of clear skies, there will be a new daily cycle of avalanche danger

Avalanche problems



Danger ratings



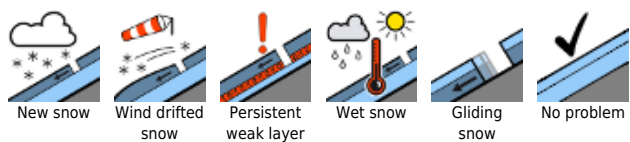
Expositions



23.04.2021, afternoon

active.

Avalanche problems



Danger ratings



Expositions

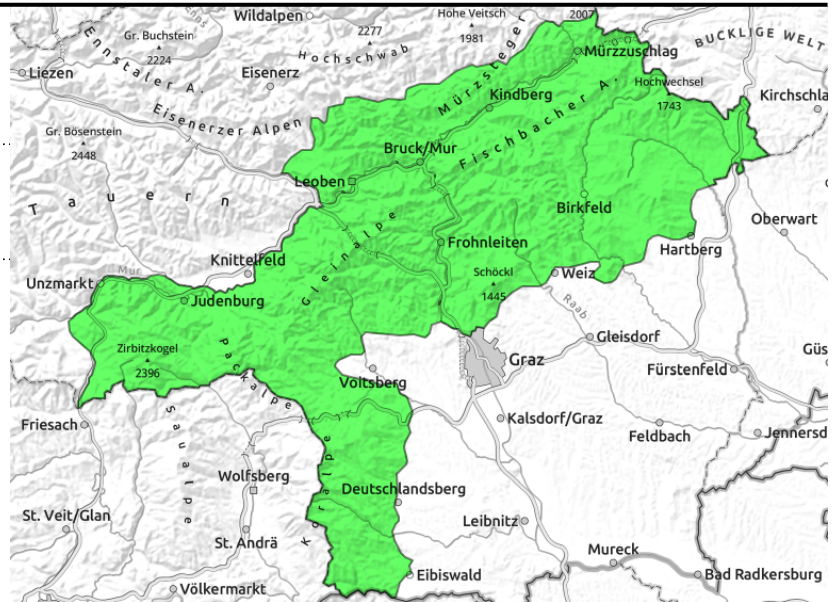


23.04.2021

Seetaler Alpen, Stub- und Gleinalpe, Korralpe, Westliche Fischbacher Alpen und Grazer Bergland, Östliche Fischbacher Alpen und Wechselgebiet, Mürztaler Alpen



from solar radiation and daytime warming



Low avalanche danger, daytime rise in wet-snow activity

On very steep slopes, danger of wet loose-snow avalanches will increase during the course of the day due to solar radiation. Isolated avalanche prone locations for dry-snow slab avalanches (old-snow problem) are found on shady extremely steep slopes above 2000 m.

Snowpack structure

On Thursday, repeated thunderstorm-like rainfall, snowfall, graupel showers are expected. At high altitudes, a thin, mostly wind-impacted layer has been deposited on the surface, and repeatedly moistened. On Thursday night, skies will clear, the snowpack surface will regain firmness (to differing degrees, depending on altitude) and often form a crust capable of bearing loads in early morning. During the daytime the powerful radiation and superficial moistening will continue. Snow will lose firmness and stability, become heavy, at low altitudes wet to rotten. In isolated cases in the old snow there are still weak layers for slab avalanches (in transitions from the fresh layer to the compact old snowpack), in shady terrain above 2000 m. Water seepage into the snowpack has created a lubricating film at ground level which enhances gliding snow activity over the ground.

Weather

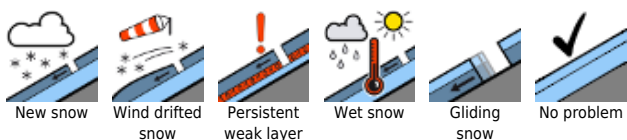
Following a night of clear skies, stable and very sunny weather awaits us on Friday. In the morning, cloudless skies, the clouds in the afternoon will be harmless. Strong westerly winds to start with on the eastern rim of the Alps will soon slacken off. Temperatures will rise. At 2000 m. from -4 to +2 degrees; at 1500 m, from -1 to +5 degrees

Outlook

Also on Saturday, weather conditions in the mountains will be pleasant and low in cloud, also somewhat milder. Following a night of clear skies, there will be a new daily cycle of avalanche danger active.

Translated by Jeffrey McCabe, www.creativtrans.com

Avalanche problems



Danger ratings



Expositions

