

Moderate avalanche danger from fresh snowdrifts along Northern Alps and Niedere Tauern

| | | |
|--|--|--|
| | <p>2 timberline</p> <p>Totes Gebirge, Dachsteingebiet, Schladminger Tauern, Nördliche Wölzer Tauern, Rottenmanner Tauern, Ennstaler Alpen, Hochschwabgebiet, Mürtzsteger Alpen, Eisenerzer Alpen, Seckauer Tauern, Südliche Wölzer Tauern</p> | |
| | <p>1</p> <p>Gurktaler Alpen</p> | |
| | <p>1</p> <p>Seetaler Alpen, Stub- und Gleinalpe, Östliche Fischbacher Alpen und Wechselgebiet, Koralpe</p> | |

Avalanche problems



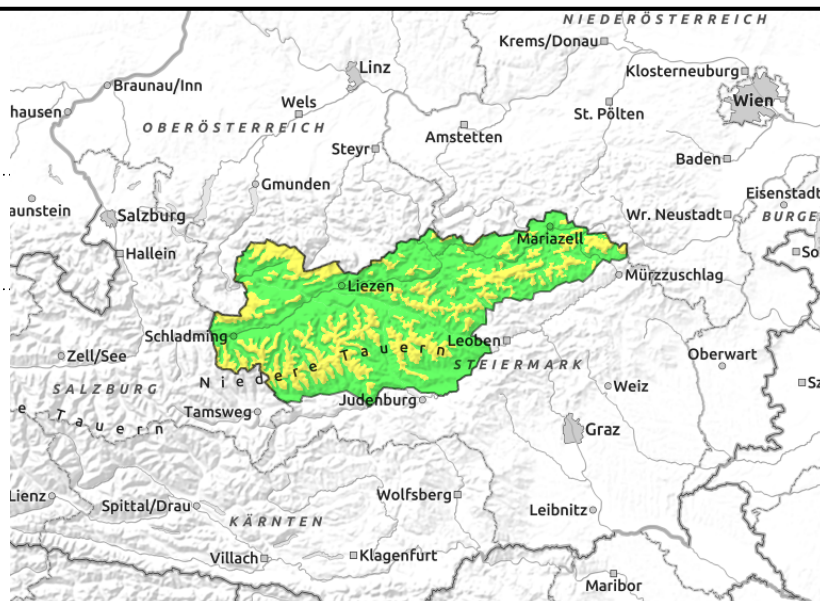
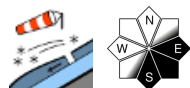
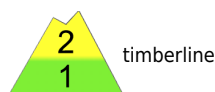
Danger ratings



Expositions



Totes Gebirge, Dachsteingebiet, Schladminger Tauern, Nördliche Wölzer Tauern, Rottenmanner Tauern, Ennstaler Alpen, Hochschwabgebiet, Mürzsteiger Alpen, Eisenerzer Alpen, Seckauer Tauern, Südliche Wölzer Tauern



Moderate avalanche danger above treeline due to fresh snowdrifts

Freshly generate snowdrift accumulations at high altitudes merit attentiveness. They have formed since Holy Saturday due to winds, deposited on E-S facing slopes, also in other aspects behind protruberances. Avalanche prone locations are relatively small. Moist-slides are possible in rough, steep high-altitude terrain. In shady high-altitude terrain, the old-snow problem persists.

Snowpack structure

Up to 25 cm of fresh snow has been registered amid strong wind impact, deposited between Holy Saturday and Easter Sunday atop a superficially frozen (at lower altitudes moist) old snowpack. Weak layers occur between snowdrifts in the form of soft snow or graupel. As a result of the prognosticated rise in temperature for Easter Monday, the snow on sunny slopes can rapidly settle and become sticky, or else wet at low altitudes.

Weather

On Easter Monday, initially sunny, even cloudless weather, very mild. Later in the morning clouds will move in from the west, in the afternoon cloud cover will become heavier. Light winds will also intensify. On Monday night, up to 10 cm of fresh snow is anticipated. Temperatures will increase to +2 degrees at 2000 m by midday, to +6 degrees at 1500 m.

Outlook

On Tuesday, temperatures at 2000 m will be as much as 15 degrees lower than on the previous day! As a result of stormy winds, heavy cloud cover with snowfall and graupel will pass through repeatedly. In this wintry phase, expected to last until Thursday at least, avalanche danger will increase.

Avalanche problems



Danger ratings

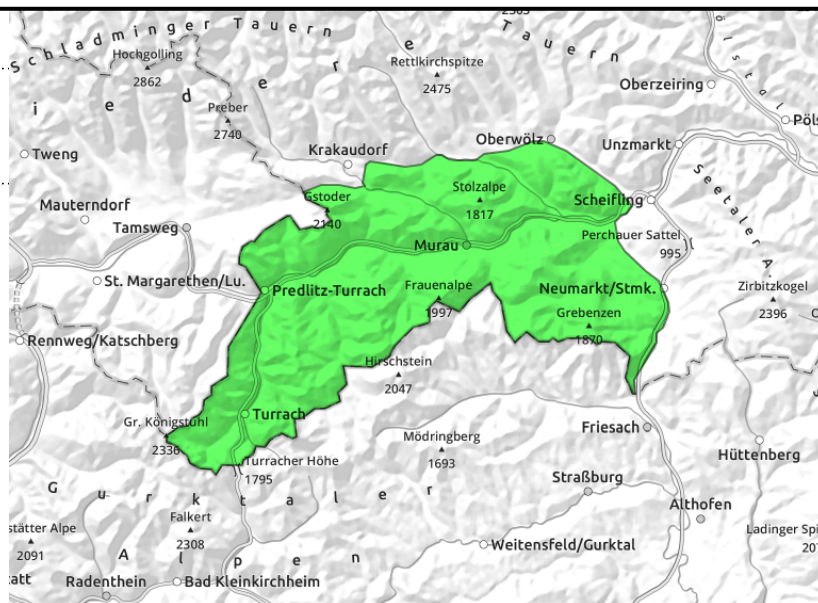
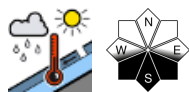


Expositions



05.04.2021

Gurktaler Alpen



Low danger, due to wet-snow avalanches

As a result of the nocturnal cooling, the relevant wet-snow avalanche situation has lost some of its significance, but triggerings cannot be ruled out due to the still wet snowpack. Fresh snow has not been registered on the southern flank of the Alps.

Snowpack structure

Following recent days of high temperatures, Holy Saturday was measurably colder. The snowpack was able to regain some firmness at least in the uppermost layers, in deeper-down layers it is still moist-to-wet. With the forecast short phase of warmer weather on Easter Monday, the hard snowpack surface will transform to firm in the course of the morning.

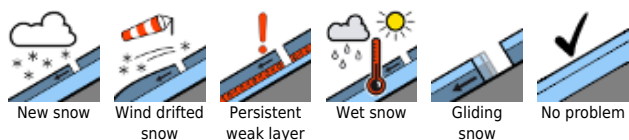
Weather

Easter Monday will begin with cloudless skies, mild temperatures. In the afternoon, clouds will move in from the west, winds will intensify. Temperatures at midday: +2 degrees at 2000 m, +5 degrees at 1500 m.

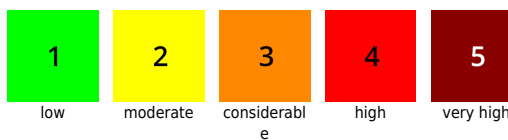
Outlook

On Monday night, light snowfall is expected. On Tuesday, temperatures will be about 10 degrees lower than the day before. Initially no change in avalanche danger.

Avalanche problems



Danger ratings

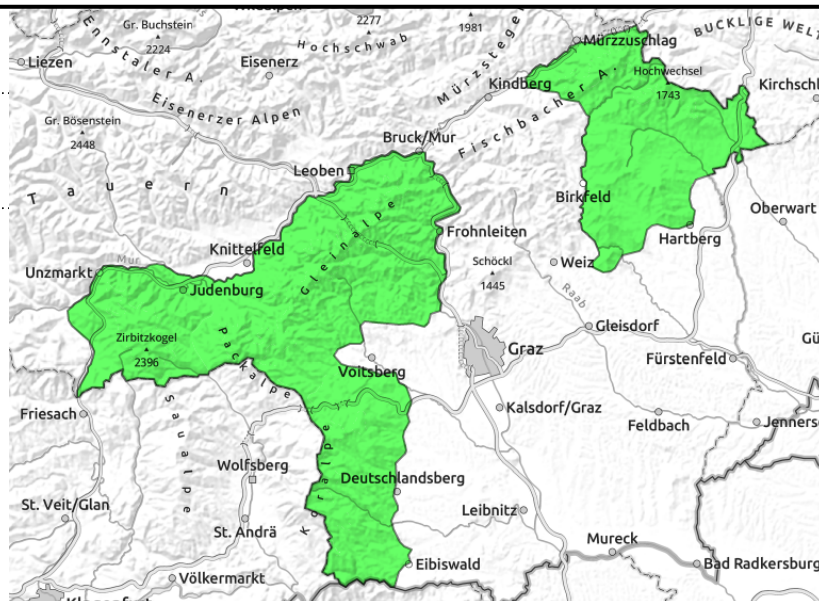
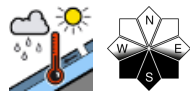


Expositions



05.04.2021

Seetaler Alpen, Stub- und Gleinalpe, Östliche Fischbacher Alpen und Wechselgebiet, Koralpe



Low danger due to isolated wet-snow avalanches

On Easter Monday, low avalanche danger, some last wet-snow or moist-snow releases are possible due to the moist-to-wet condition of the snowpack down to more deeply embedded layers (cannot be ruled out).

Snowpack structure

Following the recent days of higher temperatures and slight amount of rainfall, it became quite cold on Holy Saturday. The snowpack was able to consolidate, but remained wet in the lower layers. On Saturday night, a few centimetres of fresh snow was registered which soon became quite sticky. As a result of intensive solar radiation and daytime rise in temperature, the snow will rapidly become soft on Easter Monday.

Weather

Easter Monday will begin with cloudless skies, light winds and mild temperatures in the Seetal Alps and Styrian rimline ranges. In the afternoon, heavy cloud cover will move in from the west, winds will intensify. Temperatures at midday: +1 degree at 2000 m, +4 degrees at 1500 m.

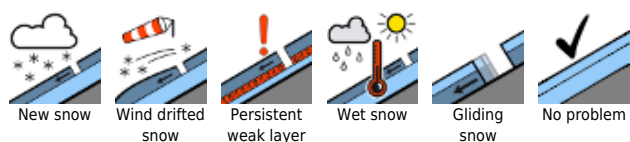
Outlook

On Monday night snowfall will set in, up to 10 cm is expected in the Koralpe region. On Tuesday, temperatures will lie about 15 degrees lower than the day before..

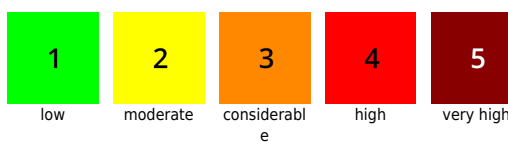
Avalanche danger is not expected to change significantly to start with.

Translated by Jeffrey McCabe, www.creativtrans.com

Avalanche problems



Danger ratings



Expositions

