

## Lower temperatures help snowpack regain firmness. Fresh drifts forming in northern barrier cloud regions.

	<p>timberline Totes Gebirge, Dachsteingebiet, Ennstaler Alpen, Hochschwabgebiet, Mürzsteger Alpen, Eisenerzer Alpen, Rottenmanner Tauern, Nördliche Wölzer Tauern, Schladminger Tauern, Südliche Wölzer Tauern, Seckauer Tauern</p>	
	<p>Gurktaler Alpen</p>	
	<p>Koralpe</p>	
	<p>Seetaler Alpen, Östliche Fischbacher Alpen und Wechselgebiet, Stub- und Gleinalpe</p>	

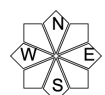
### Avalanche problems



### Danger ratings

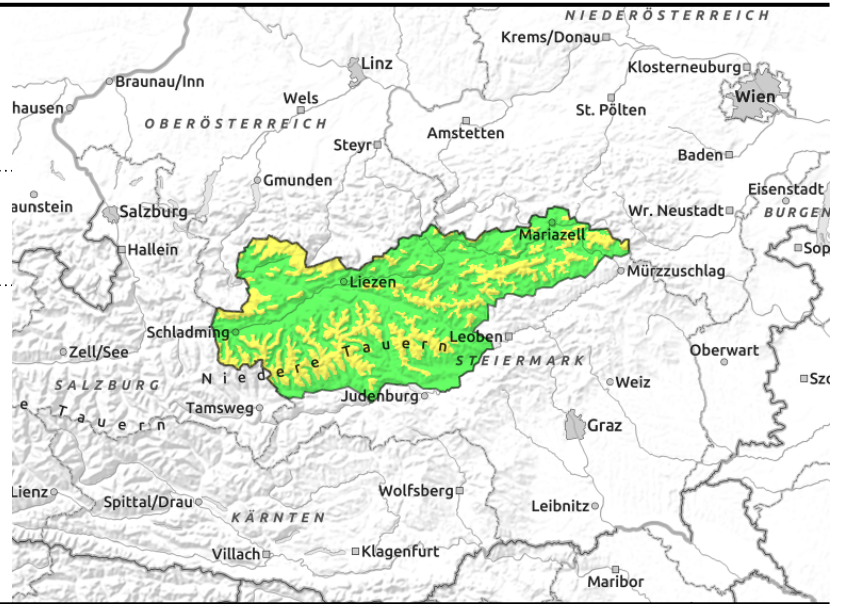
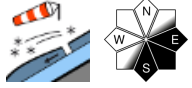


### Expositions



**03.04.2021**

**Totes Gebirge, Dachsteingebiet, Ennstaler Alpen, Hochschwabgebiet, Mürzsteiger Alpen, Eisenerzer Alpen, Rottenmanner Tauern, Nördliche Wölzer Tauern, Schladminger Tauern, Südliche Wölzer Tauern, Seckauer Tauern**



## Moderate avalanche danger due to fresh snowdrifts above treeline

Low avalanche danger prevails, moderate above the timberline. The relevant wet-snow situation is receding, freshly generated snowdrifts acquire new importance where they have formed on east and south-facing slopes. Also in aother aspects, fresh snowdrift patches are found particularly behind protruberances. Despite lower temperatures, isolated glide-snow avalanches are possible on steep grassy slopes. In shady high-altitude terrain the old-snow threat persists.

### Snowpack structure

Following the high temperatures of the last two days, conditions on Good Friday have reversed: the cold air masses have caused temperatures to plummet in high alpine regions (up to 15 degrees lower). This will bring about massive cooling of the snowpack layering, quite favourable all in all, the moist-to-thoroughly-wet snowpack as regained firmness. On Holy Saturday the forecast amounts of precipitation and storm-strength winds will generate fresh snowdrift patches. Weak layers can occur primarily through intermediate sheets of graupel in the snowpack.

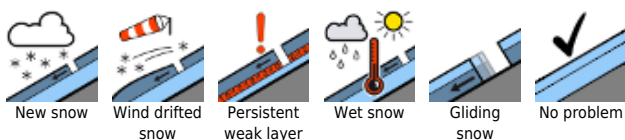
### Weather

On Friday night, moist-cold air masses will reach the Northern Alps, and northern and central Niedere Tauern. Amid storm strength NW winds, snow showers will pass through repeatedly, including graupel showers, alongside brief thunderstorms. The snowfall level will lie at 600-800 m. Temperatures at midday will by -8 at 2000m, -3 degrees at 1500m.

### Outlook

On Easter Sunday along the northern flank of the Alps, initially heavy cloud cover and final snow showers. During the morning sunny weather will gradually take over. Winds will slacken off, temperatures rise slightly. Avalanche danger is not expected to change significantly for the moment.

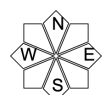
#### Avalanche problems



#### Danger ratings

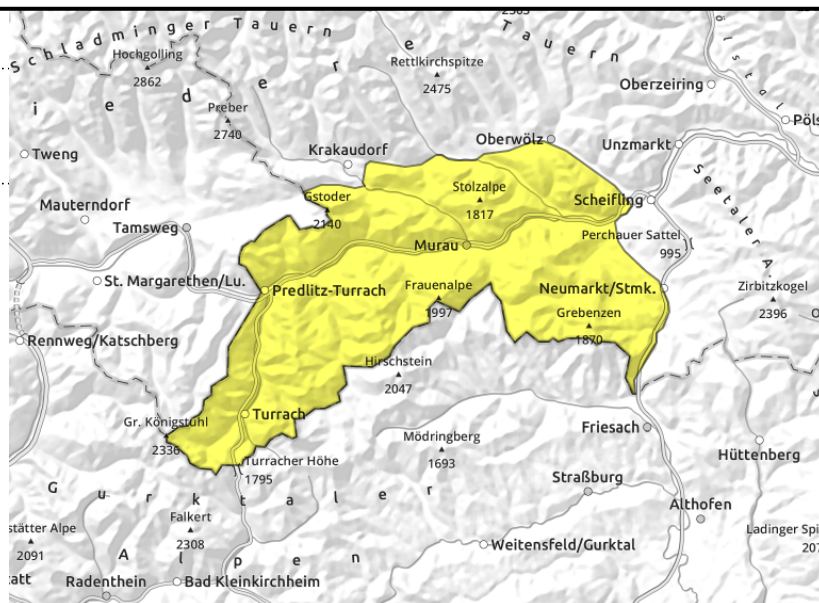
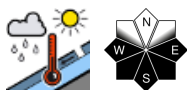


#### Expositions



**03.04.2021**

**Gurktaler Alpen**



**Moderate danger initially due to wet-snow avalanches**

In the regions of Turracher Nockberge where snowfall has been heaviest, moderate danger prevails to start with. Here, wet-snow and moist-snow releases cannot be ruled out.

**Snowpack structure**

After the last few days of high temperatures, it will gradually become colder on Friday night. This will bring about favourable effects in the snowpack, the moist-to-wet layers will be able to regain firmness.

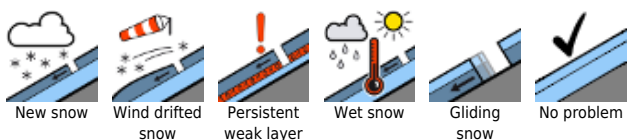
**Weather**

On the southern flank of the Alps a small amount of snowfall is possible above 1000 m on Holy Saturday, during the daytime the stormy northerly foehn wind will disperse the clouds somewhat. Temperatures will recede noticeably. At midday at 2000 m: -6 degrees; at 1500 m, -1 degree.

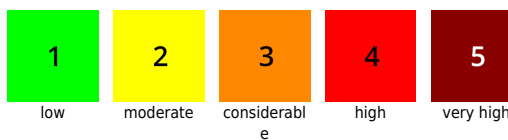
**Outlook**

On Easter Sunday, intermittently sunny weather will gradually take over in the mountains. It will remain quite windy. Temperatures will recede somewhat.

**Avalanche problems**



**Danger ratings**

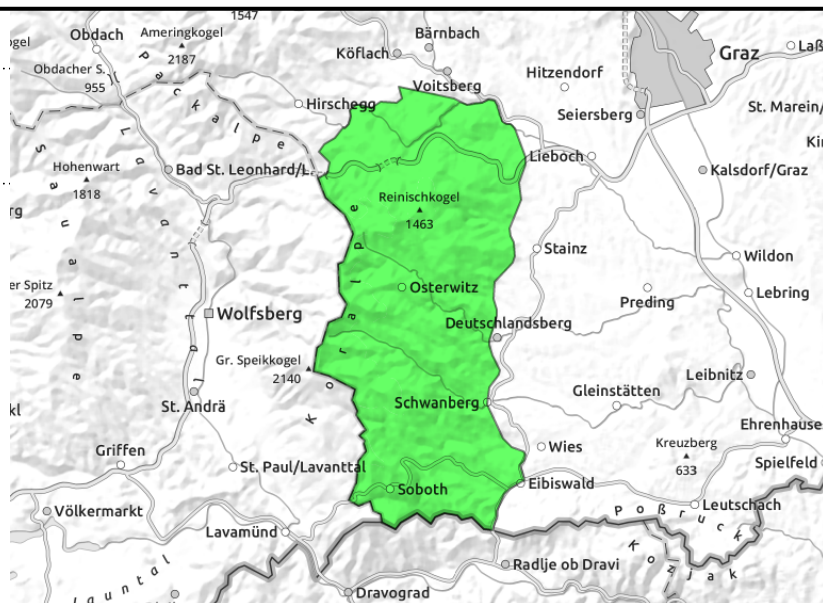
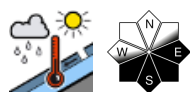


**Expositions**



**03.04.2021**

**Koralpe**



**Danger of wet-snow avalanches due to rainfall**

In the Koralpe region, low avalanche danger. Here, rainfall can cause wet-snow or moist-snow releases.

**Snowpack structure**

Following the high temperatures of the last few days, on Friday night temperatures will drop. Initially, primarily in the western rimline ranges at high altitudes, there will be snowfall onto the snowpack. The lower temperatures will have a favourable impact on the snowpack layering subsequently, the snowpack can regain some of its lost firmness.

**Weather**

On Friday night the rain will turn to snowfall. On Saturday morning above 1000 m, some snowfall is possible. During the day, the stormy northerly foehn winds will disperse the clouds somewhat. Temperatures will recede noticeably. At midday at 2000 m: -6 degrees; at 1500 m: -1 degree.

**Outlook**

On Easter Sunday along the northern flank of the Alps, initially heavy cloud cover and final snow showers. During the morning sunny weather will gradually take over. Winds will slacken off, temperatures drop slightly. Avalanche danger is not expected to change significantly for the moment.

**Avalanche problems**



**Danger ratings**

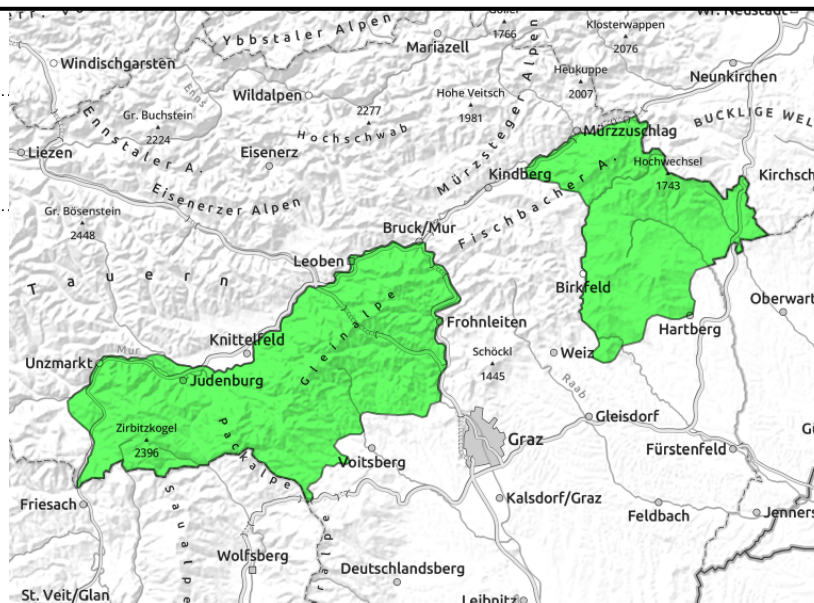
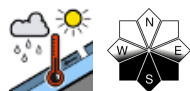


**Expositions**



**03.04.2021**

**Seetaler Alpen, Östliche Fischbacher Alpen und Wechselgebiet, Stub- und Gleinalpe**



**Snowpack stabilizing due to lower temperatures**

Low avalanche danger prevails, some final wet-snow or moist-snow releases cannot be ruled out

**Snowpack structure**

Following the high temperatures of the last few days, on Friday night temperatures will drop. Initially, primarily in the western rimline ranges at high altitudes, there will be snowfall onto the snowpack. The lower temperatures will have a favourable impact on the snowpack layering subsequently, the snowpack can regain some of its lost firmness.

**Weather**

On the southern flank of the Alps a small amount of snowfall is possible above 1000 m on Holy Saturday, during the daytime the stormy northerly foehn wind will disperse the clouds somewhat. Temperatures will recede noticeably. At midday at 2000 m: -6 degrees; at 1500 m, -1 degree.

**Outlook**

On Easter Sunday along the northern flank of the Alps, initially heavy cloud cover and final snow showers. During the morning sunny weather will gradually take over. Winds will slacken off, temperatures drop slightly.

Avalanche danger is not expected to change significantly for the moment.

Translated by Jeffrey McCabe, [www.creativtrans.com](http://www.creativtrans.com)

**Avalanche problems**



**Danger ratings**



**Expositions**

