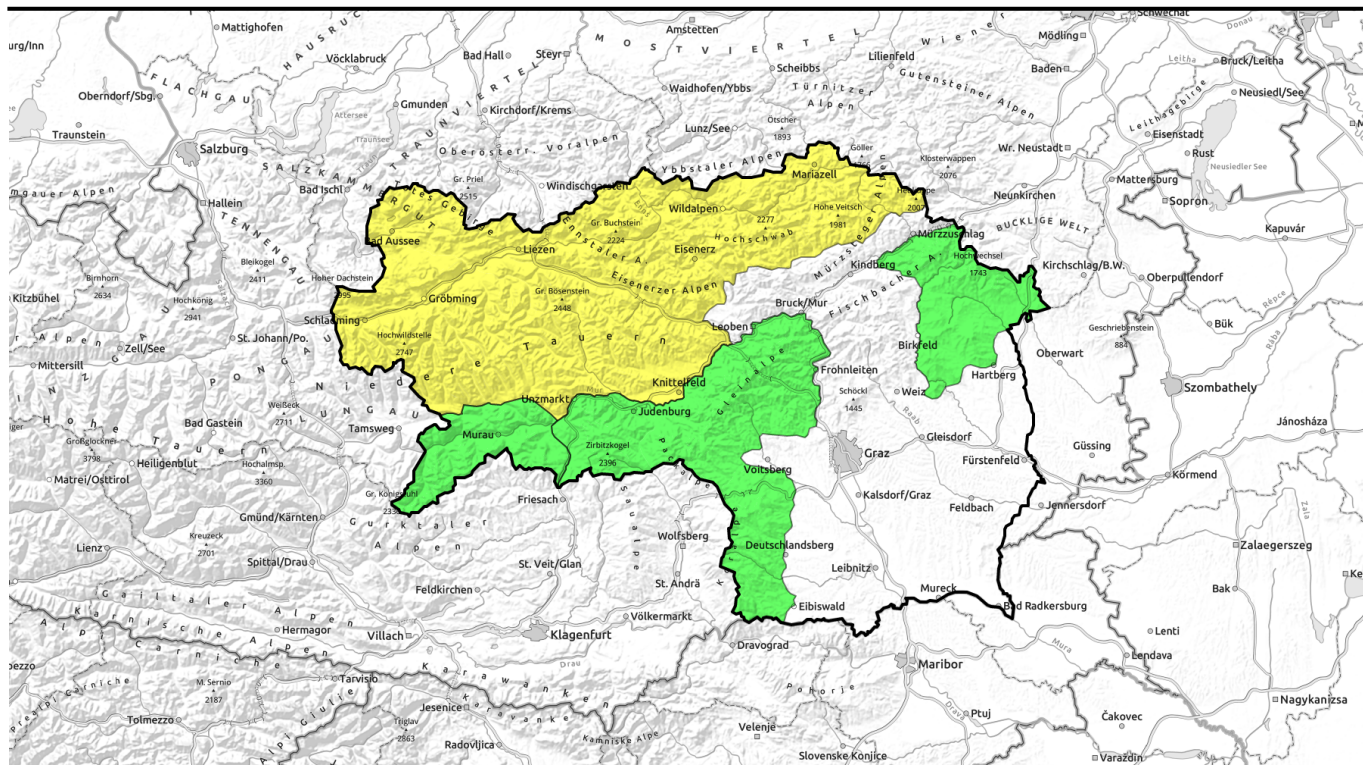
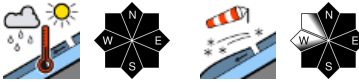
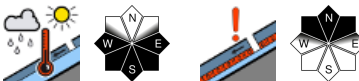




02.04.2021, morning



Generally more cloud, some showers, somewhat lower temperatures

2	Totes Gebirge, Dachsteingebiet, Schladminger Tauern, Nördliche Wölzer Tauern, Rottenmanner Tauern, Ennstaler Alpen, Hochschwabgebiet, Eisenerzer Alpen, Mürzsteger Alpen, Südliche Wölzer Tauern, Seckauer Tauern	
1	Gurktaler Alpen	
1	Seetaler Alpen, Stub- und Gleinalpe, Koralpe	
1	Östliche Fischbacher Alpen und Wechselgebiet	

Avalanche problems



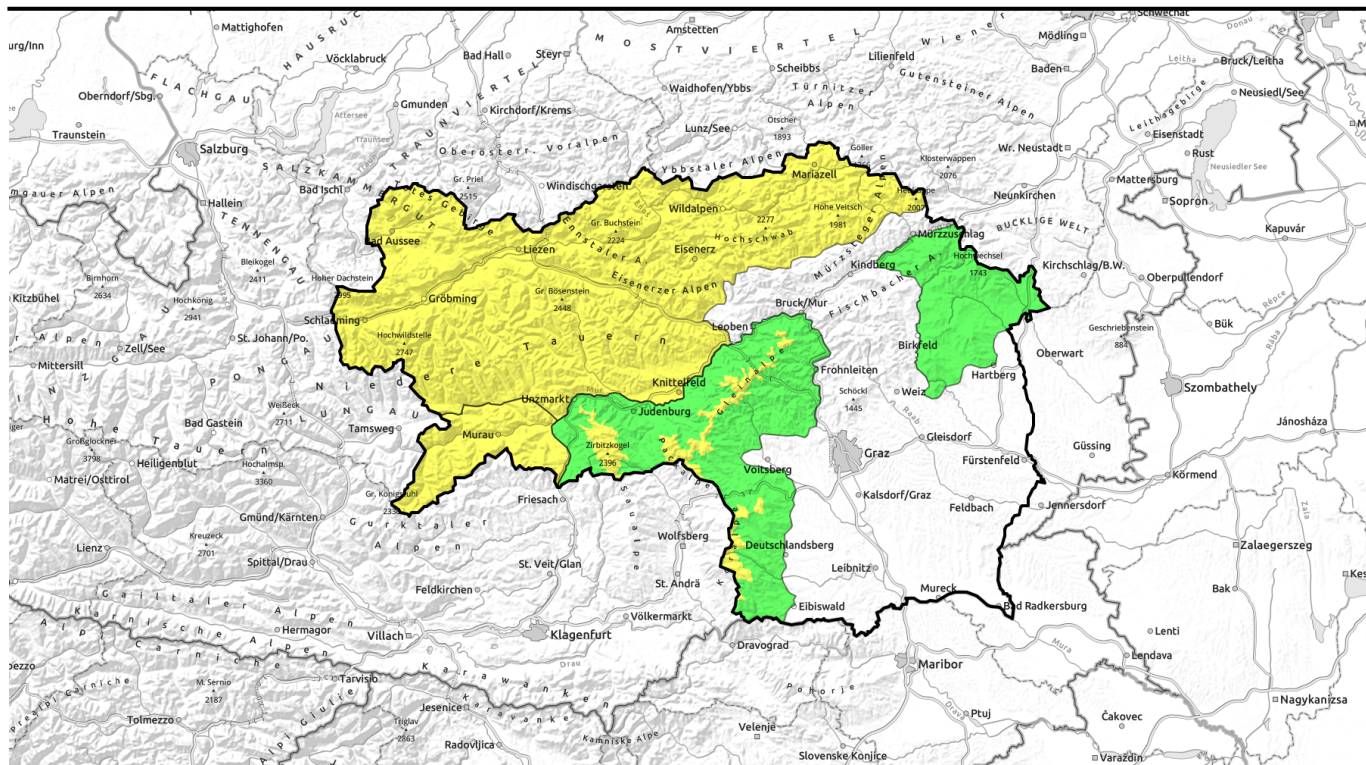
Danger ratings






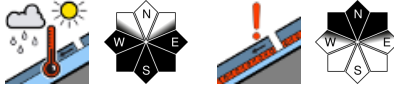



Expositions



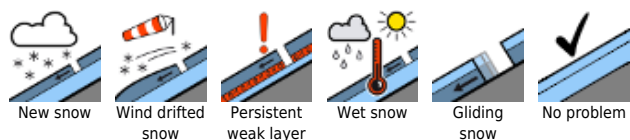
02.04.2021, afternoon



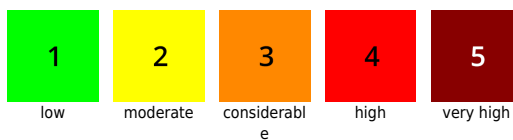
Generell mehr Wolken, teilweise Schauer und nicht mehr ganz so mild wie bisher!

	<p>Totes Gebirge, Dachsteingebiet, Schladminger Tauern, Nördliche Wölzer Tauern, Rottenmanner Tauern, Ennstaler Alpen, Hochschwabgebiet, Eisenerzer Alpen, Mürzsteger Alpen, Südliche Wölzer Tauern, Seckauer Tauern</p>	
	<p>Gurktaler Alpen</p>	
	<p>Seetaler Alpen, Stub- und Gleinalpe, Koralpe</p>	
<p>1600 m</p>	<p>Östliche Fischbacher Alpen und Wechselgebiet</p>	

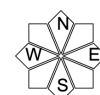
Avalanche problems



Danger ratings



Expositions



02.04.2021

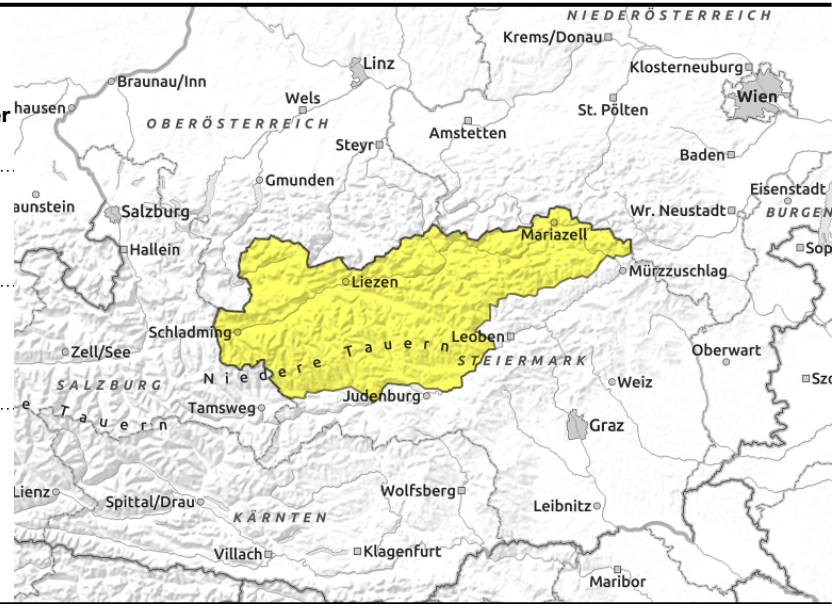
Totes Gebirge, Dachsteingebiet, Schladminger Tauern, Nördliche Wölzer Tauern, Rottenmanner Tauern, Ennstaler Alpen, Hochschwabgebiet, Eisenerzer Alpen, Mürzsteiger Alpen, Südliche Wölzer Tauern, Seckauer Tauern



naturally triggered avalanches



at high altitude where (some) fresh snow fell (wind-impact)



Moderate avalanche danger prevails due to wet-snow. Fresh snowdrifts forming at high altitudes.

Moderate avalanche danger prevails. Heavy cloud will hamper nocturnal outgoing radiation, moreover, there are showers anticipated tonight. Rain will increase the moisture below 2200 m, even in the shadiest north-facing terrain. Due to rainfall, intermittent solar radiation and still relatively mild temperatures, naturally triggered avalanches can release. In isolated cases on steep grassy slopes, also glide-snow avalanches are possible. In shady high-altitude terrain the old-snow problem still threatens; plus at high altitudes where there is no wind influence, fresh snowdrifts are being deposited.

Snowpack structure

Both rainfall and intermittent solar radiation are moistening the snowpack increasingly. Wet-snow triggerings and isolated glide-snow releases over the ground-level film on grassy slopes are the likely results. At higher altitudes, in addition, the old-snow threat persists. At high-altitudes where there is little fresh snow (due to wind impact) fresh snowdrifts are being generated.

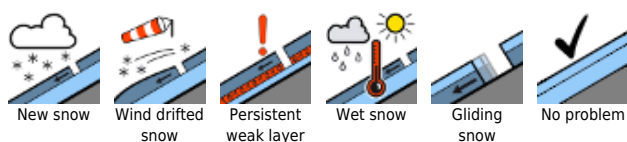
Weather

On Thursday night in the northern ranges, showers are possible. Snowfall level will fluctuate initially around 2000-2200 m. Also on Friday morning in the northern ranges, heavy cloud will persist from which snowfall is possible above 1800 m. The southern mountain ranges will first have better weather, but showers can pass through. In the afternoon, some sunshine is possible throughout Styria, but subsequently showers are again possible, particularly in the southern regions. Temperatures to start with will recede from colder air masses penetrating from the north. At midday in the northern ranges: +3 degrees at 1500 m, 0 degrees at 2000 m. In the south at midday: +9 degrees at 1500 m; +5 degrees at 2000 m. Strong to stormy NW winds will be blowing.

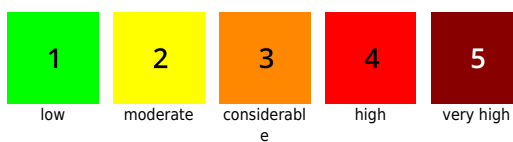
Outlook

On Saturday, weather conditions will change radically. In the northern barrier cloud regions, snowfall down to low lying areas is expected. Midday temperature at 1500 m: -3 degrees; at 2000 m, -8 degrees. A storm-strength N/NW wind will be blowing. The wet-snow situation which has prevailed

Avalanche problems



Danger ratings



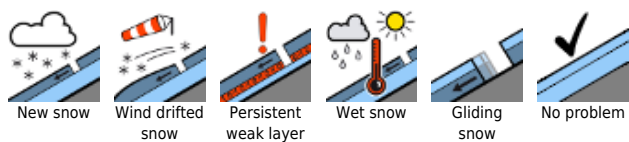
Expositions



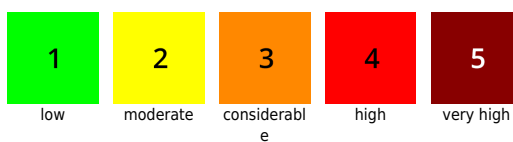
02.04.2021

until now will lose significance. Freshly generated snowdrifts will regain importance, require attentiveness.

Avalanche problems



Danger ratings



Expositions



02.04.2021, morning

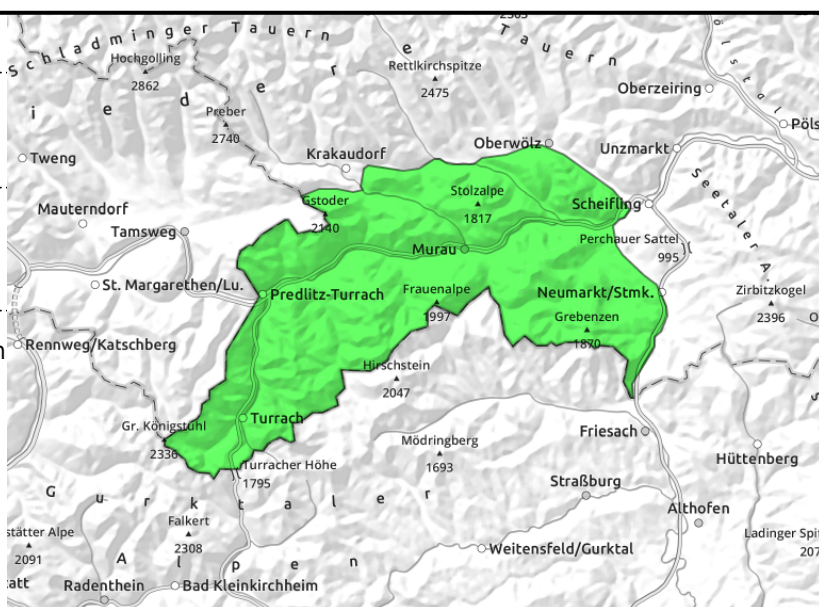
Gurktaler Alpen



daily cycle of naturally triggered avalanches



in shady and high-alpine terrain



Avalanche danger will rise to moderate during the day

Avalanche danger is subject to a daytime cycle, will rise to moderate. Due to daytime warmth, intermittent solar radiation and isolated rain showers, naturally triggered wet-snow avalanches can trigger in steep terrain. On steep grass-covered slopes, in addition, glide-snow avalanches are possible. At high altitude in shady terrain, there are still isolated avalanche prone locations due to weakened old snow.

Snowpack structure

Few clouds during the night, compared to the northern mountain ranges, will lead to more regained firmness during the nocturnal hours. Daytime warming, intermittent solar radiation and possible rainfall will destabilize the snowpack. On shady high-alpine slopes the older snowdrifts are still prone to triggering in places.

Weather

On Thursday night in the northern ranges, showers are possible. Snowfall level will fluctuate initially around 2000-2200 m. Also on Friday morning in the northern ranges, heavy cloud will persist from which snowfall is possible above 1800 m. The southern mountain ranges will first have better weather, but showers can pass through. In the afternoon, some sunshine is possible throughout Styria, but subsequently showers are again possible, particularly in the southern regions. Temperatures to start with will recede from colder air masses penetrating from the north. At midday in the northern ranges: +3 degrees at 1500 m, 0 degrees at 2000 m. In the south at midday: +9 degrees at 1500 m; +5 degrees at 2000 m. Strong to stormy NW winds will be blowing.

Outlook

On Saturday, weather conditions will change radically. In the northern barrier cloud regions, snowfall down to low lying areas is expected. Midday temperature at 1500 m: -3 degrees; at 2000 m, -8 degrees. A storm-strength N/NW wind will be blowing. The wet-snow situation which has prevailed until now will lose significance. Freshly generated snowdrifts will regain importance, require attentiveness.

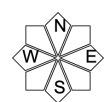
Avalanche problems



Danger ratings



Expositions



02.04.2021, afternoon

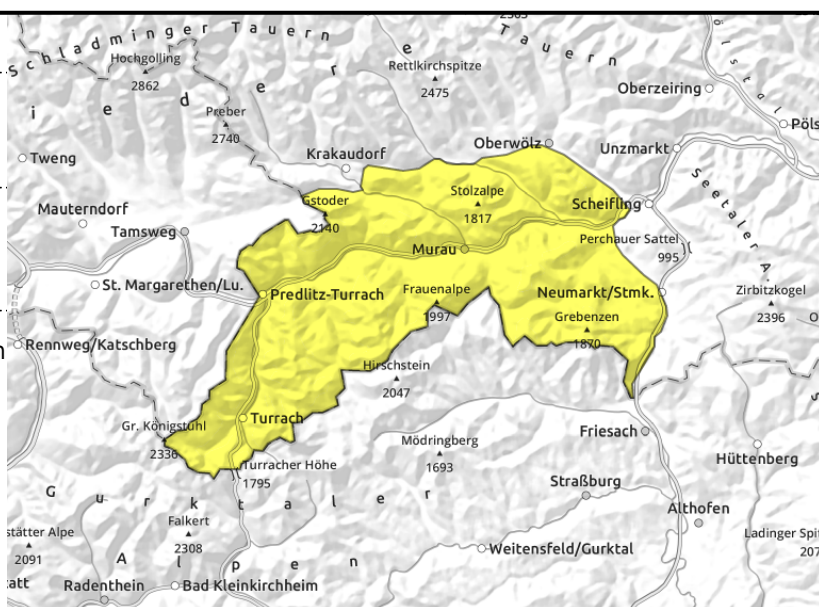
Gurktaler Alpen



daily cycle of naturally triggered avalanches



in shady and high-alpine terrain



Avalanche danger will rise to moderate during the day

Avalanche danger is subject to a daytime cycle, will rise to moderate. Due to daytime warmth, intermittent solar radiation and isolated rain showers, naturally triggered wet-snow avalanches can trigger in steep terrain. On steep grass-covered slopes, in addition, glide-snow avalanches are possible. At high altitude in shady terrain, there are still isolated avalanche prone locations due to weakened old snow.

Snowpack structure

Few clouds during the night, compared to the northern mountain ranges, will lead to more regained firmness during the nocturnal hours. Daytime warming, intermittent solar radiation and possible rainfall will destabilize the snowpack. On shady high-alpine slopes the older snowdrifts are still prone to triggering in places.

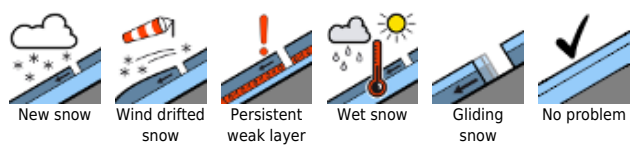
Weather

On Thursday night in the northern ranges, showers are possible. Snowfall level will fluctuate initially around 2000-2200 m. Also on Friday morning in the northern ranges, heavy cloud will persist from which snowfall is possible above 1800 m. The southern mountain ranges will first have better weather, but showers can pass through. In the afternoon, some sunshine is possible throughout Styria, but subsequently showers are again possible, particularly in the southern regions. Temperatures to start with will recede from colder air masses penetrating from the north. At midday in the northern ranges: +3 degrees at 1500 m, 0 degrees at 2000 m. In the south at midday: +9 degrees at 1500 m; +5 degrees at 2000 m. Strong to stormy NW winds will be blowing.

Outlook

On Saturday, weather conditions will change radically. In the northern barrier cloud regions, snowfall down to low lying areas is expected. Midday temperature at 1500 m: -3 degrees; at 2000 m, -8 degrees. A storm-strength N/NW wind will be blowing. The wet-snow situation which has prevailed until now will lose significance. Freshly generated snowdrifts will regain importance, require attentiveness.

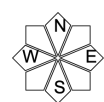
Avalanche problems



Danger ratings



Expositions

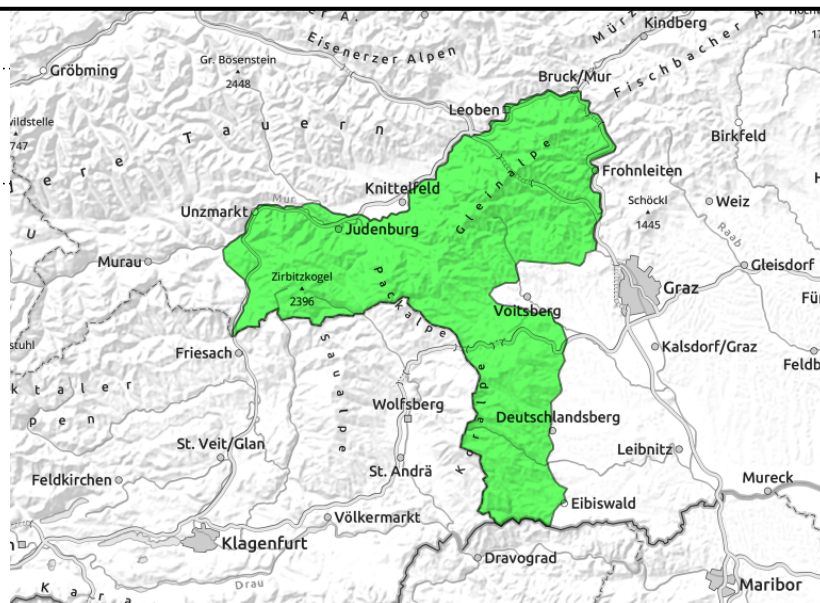


02.04.2021, morning

Seetaler Alpen, Stub- und Gleinalpe, Koralpe



daily cycle of naturally triggered avalanches



Avalanche danger will rise to moderate during the day

Avalanche danger is subject to a daytime danger cycle, it rises to moderate at higher altitudes where there is still ample snow. Due to daytime warming, intermittent solar radiation and intermittent rainfall, naturally triggered avalanches can trigger in steep terrain.

Snowpack structure

Few clouds during the night, compared to the northern mountain ranges, will lead to more regained firmness during the nocturnal hours. Daytime warming, intermittent solar radiation and possible rainfall (mainly in the afternoon) will destabilize the snowpack. There is generally less snow in this region.

Weather

On Thursday night in the northern ranges, showers are possible. Snowfall level will fluctuate initially around 2000-2200 m. Also on Friday morning in the northern ranges, heavy cloud will persist from which snowfall is possible above 1800 m. The southern mountain ranges will first have better weather, but showers can pass through. In the afternoon, some sunshine is possible throughout Styria, but subsequently showers are again possible, particularly in the southern regions. Temperatures to start with will recede from colder air masses penetrating from the north. At midday in the northern ranges: +3 degrees at 1500 m, 0 degrees at 2000 m. In the south at midday: +9 degrees at 1500 m; +5 degrees at 2000 m. Strong to stormy NW winds will be blowing.

Outlook

On Saturday, weather conditions will change radically. In the northern barrier cloud regions, snowfall down to low lying areas is expected. Midday temperature at 1500 m: -3 degrees; at 2000 m, -8 degrees. A storm-strength N/NW wind will be blowing. The wet-snow situation which has prevailed until now will lose significance. Freshly generated snowdrifts will regain importance, require attentiveness.

Avalanche problems



New snow



Wind drifted snow



Persistent weak layer



Wet snow



Gliding snow



No problem

Danger ratings



1

low



2

moderate



3

considerable



4

high



5

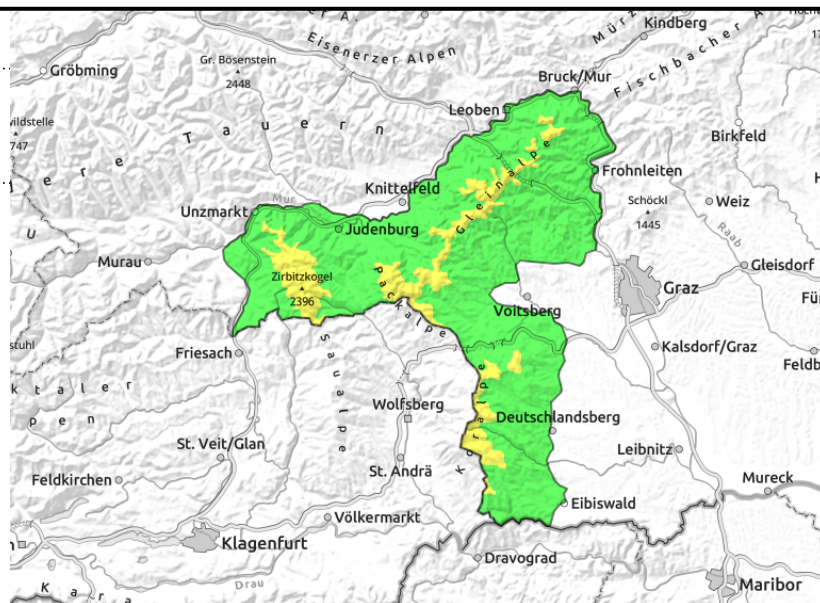
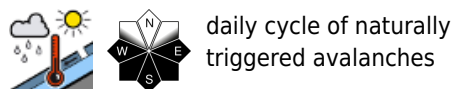
very high

Expositions



02.04.2021, afternoon

Seetaler Alpen, Stub- und Gleinalpe, Koralpe



Avalanche danger will rise to moderate during the day

Avalanche danger is subject to a daytime danger cycle, it rises to moderate at higher altitudes where there is still ample snow. Due to daytime warming, intermittent solar radiation and intermittent rainfall, naturally triggered avalanches can trigger in steep terrain.

Snowpack structure

Few clouds during the night, compared to the northern mountain ranges, will lead to more regained firmness during the nocturnal hours. Daytime warming, intermittent solar radiation and possible rainfall (mainly in the afternoon) will destabilize the snowpack. There is generally less snow in this region.

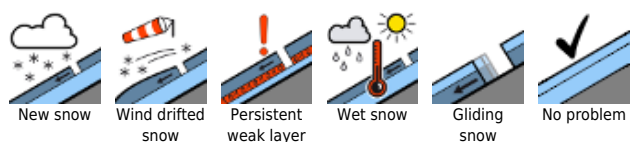
Weather

On Thursday night in the northern ranges, showers are possible. Snowfall level will fluctuate initially around 2000-2200 m. Also on Friday morning in the northern ranges, heavy cloud will persist from which snowfall is possible above 1800 m. The southern mountain ranges will first have better weather, but showers can pass through. In the afternoon, some sunshine is possible throughout Styria, but subsequently showers are again possible, particularly in the southern regions. Temperatures to start with will recede from colder air masses penetrating from the north. At midday in the northern ranges: +3 degrees at 1500 m, 0 degrees at 2000 m. In the south at midday: +9 degrees at 1500 m; +5 degrees at 2000 m. Strong to stormy NW winds will be blowing.

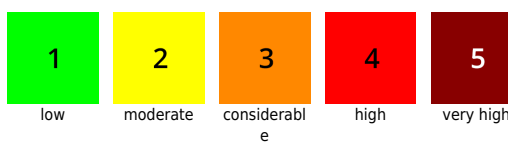
Outlook

On Saturday, weather conditions will change radically. In the northern barrier cloud regions, snowfall down to low lying areas is expected. Midday temperature at 1500 m: -3 degrees; at 2000 m, -8 degrees. A storm-strength N/NW wind will be blowing. The wet-snow situation which has prevailed until now will lose significance. Freshly generated snowdrifts will regain importance, require attentiveness.

Avalanche problems



Danger ratings

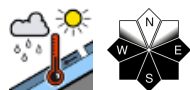


Expositions

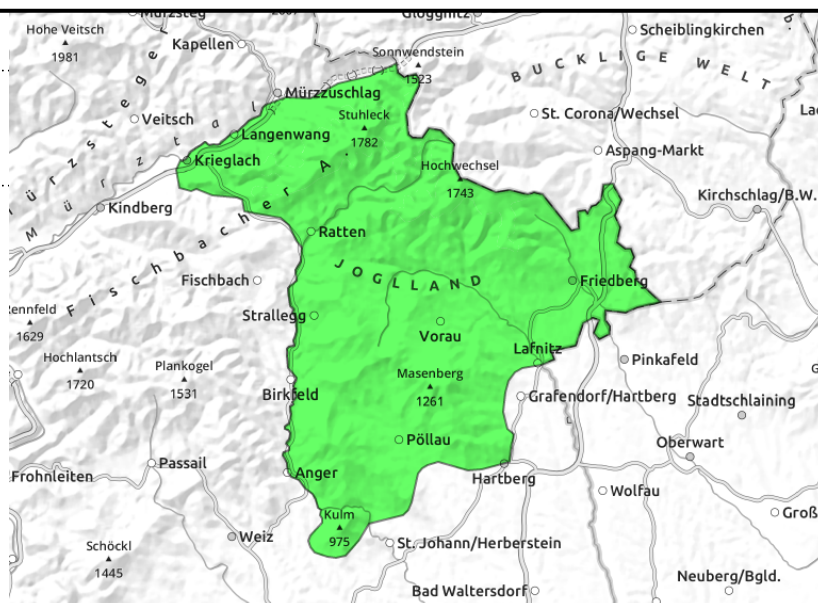


02.04.2021

Östliche Fischbacher Alpen und Wechselgebiet



naturally triggered avalanches



Low avalanche danger prevails

Low avalanche danger prevails. At high altitudes where there is deeper snow, isolated wet-snow avalanches can trigger.

Snowpack structure

Due to the (somewhat weaker) danger cycle, intermittent solar radiation and possible short rain showers, the snowpack can destabilize. For that reason, isolated, small-sized wet-snow slides cannot be ruled out. In general there is less snow in this region.

Weather

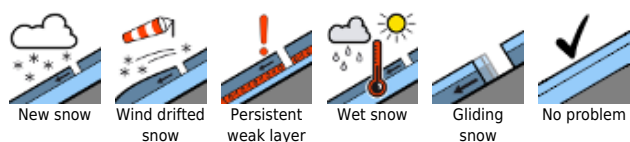
On Thursday night in the northern ranges, showers are possible. Snowfall level will fluctuate initially around 2000-2200 m. Also on Friday morning in the northern ranges, heavy cloud will persist from which snowfall is possible above 1800 m. The southern mountain ranges will first have better weather, but showers can pass through. In the afternoon, some sunshine is possible throughout Styria, but subsequently showers are again possible, particularly in the southern regions. Temperatures to start with will recede from colder air masses penetrating from the north. At midday in the northern ranges: +3 degrees at 1500 m, 0 degrees at 2000 m. In the south at midday: +9 degrees at 1500 m; +5 degrees at 2000 m. Strong to stormy NW winds will be blowing.

Outlook

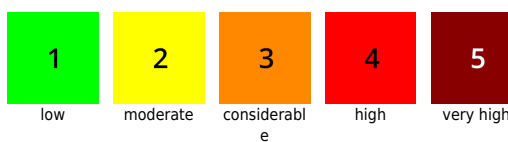
On Saturday, weather conditions will change radically. In the northern barrier cloud regions, snowfall down to low lying areas is expected. Midday temperature at 1500 m: -3 degrees; at 2000 m, -8 degrees. A storm-strength N/NW wind will be blowing. The wet-snow situation which has prevailed until now will lose significance. Freshly generated snowdrifts will regain importance, require attentiveness.

Translated by Jeffrey McCabe, www.creativtrans.com

Avalanche problems



Danger ratings



Expositions

