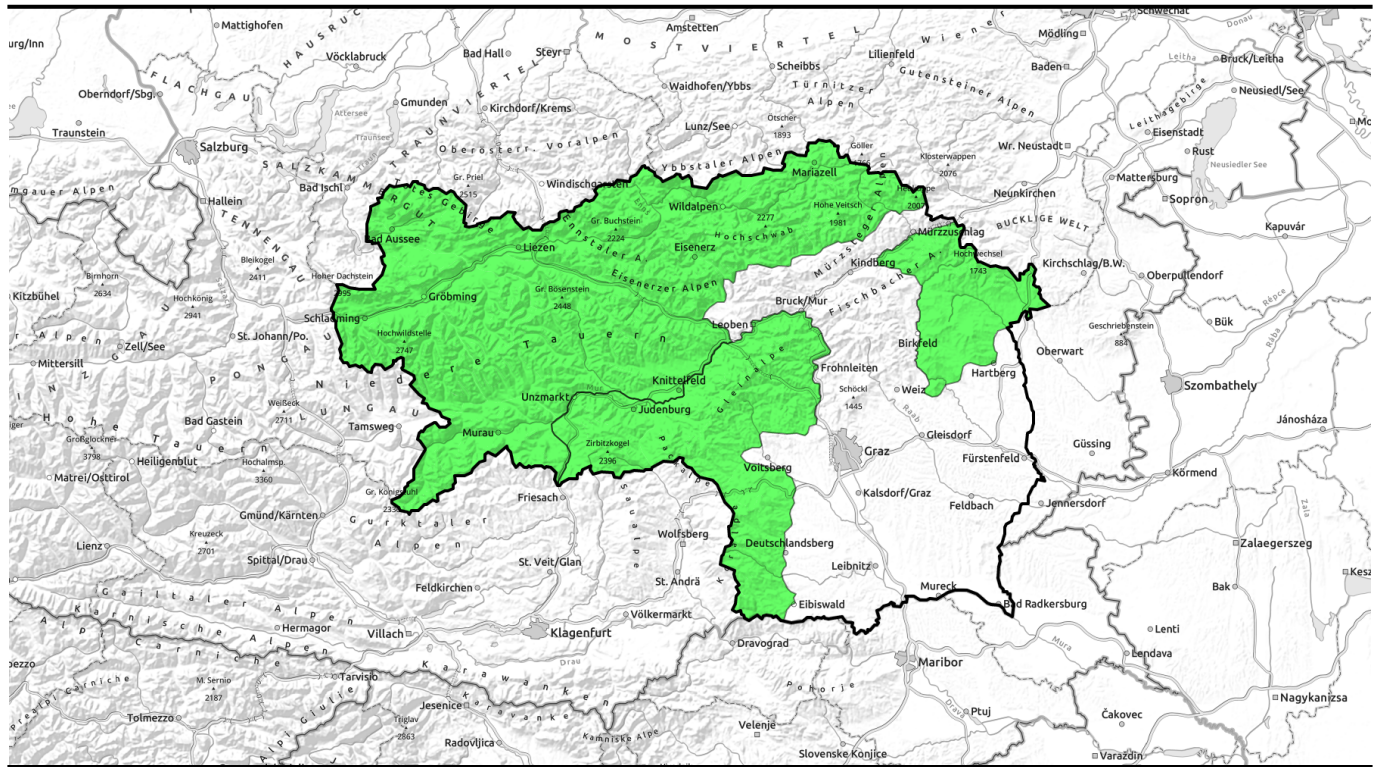



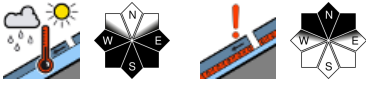

01.04.2021, morning




Somewhat more cloud, mild temperatures. daytime danger cycle

- 

Totes Gebirge, Dachsteingebiet, Schladminger Tauern, Gurktaler Alpen, Südliche Wölzer Tauern, Nördliche Wölzer Tauern, Rottenmanner Tauern, Ennstaler Alpen, Seckauer Tauern, Eisenerzer Alpen, Hochschwabgebiet, Mürtzsteger Alpen


- 

Seetaler Alpen, Stub- und Gleinalpe, Koralpe, Östliche Fischbacher Alpen und Wechselgebiet



Avalanche problems



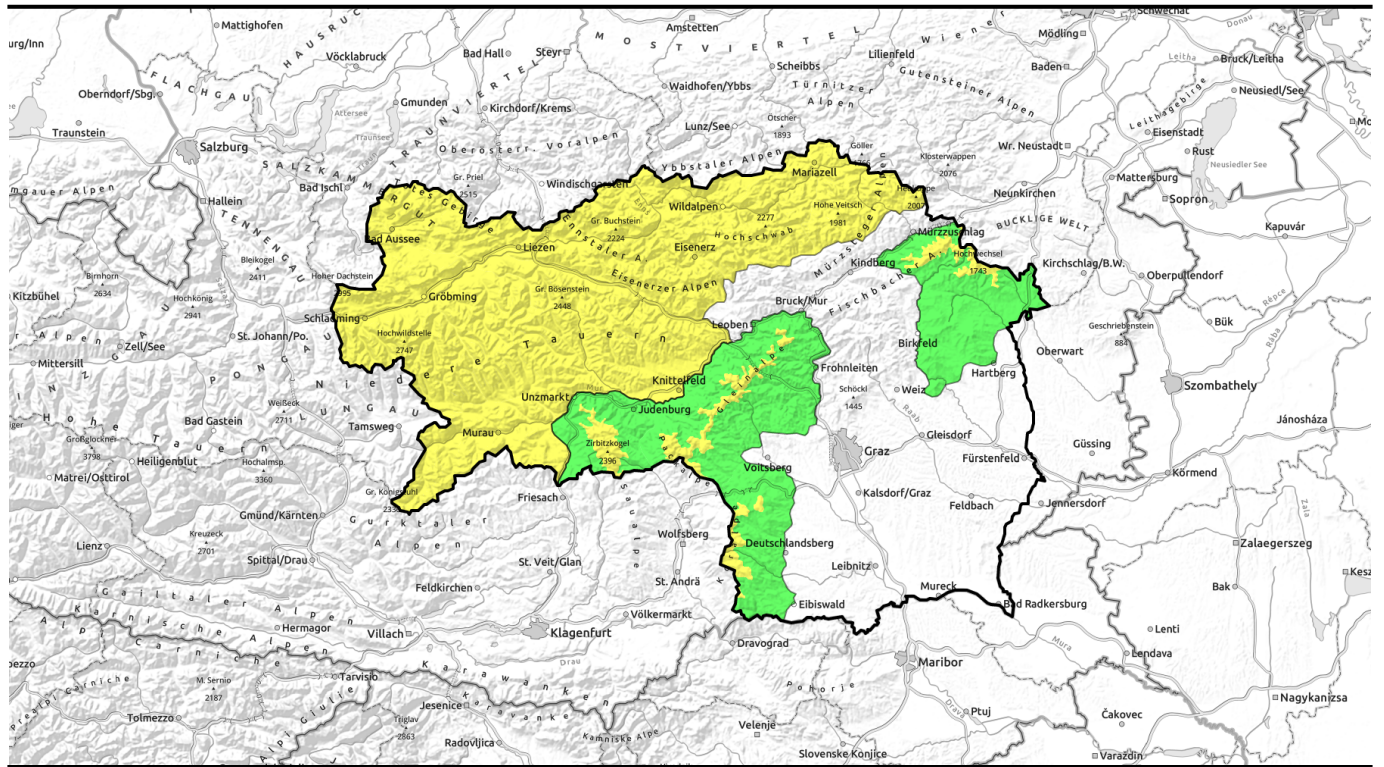
Danger ratings











Expositions



01.04.2021, afternoon






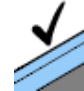


Mehr Wolken als zuletzt bei noch milden Temperaturen, Tagesgang der Lawinengefahr!

	Totes Gebirge, Dachsteingebiet, Schladminger Tauern, Gurktaler Alpen, Südliche Wölzer Tauern, Nördliche Wölzer Tauern, Rottenmanner Tauern, Ennstaler Alpen, Seckauer Tauern, Eisenerzer Alpen, Hochschwabgebiet, Mürzsteger Alpen	   
	Seetaler Alpen, Stub- und Gleinalpe, Koralpe, Östliche Fischbacher Alpen und Wechselgebiet	 

1600 m

Avalanche problems

					
New snow	Wind drifted snow	Persistent weak layer	Wet snow	Gliding snow	No problem

Danger ratings

1	2	3	4	5
low	moderate	considerabl e	high	very high

Expositions



01.04.2021, morning

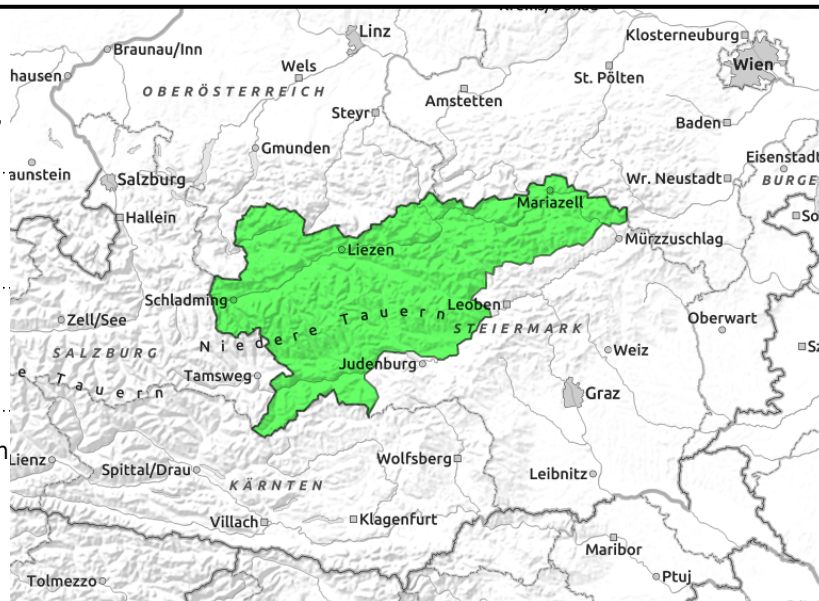
Totes Gebirge, Dachsteingebiet, Schladminger Tauern, Gurktaler Alpen, Südliche Wölzer Tauern, Nördliche Wölzer Tauern, Rottenmanner Tauern, Ennstaler Alpen, Seckauer Tauern, Eisenerzer Alpen, Hochschwabgebiet, Mürzsteger Alpen



daytime cycle of naturally triggered avalanches



in shady and high-alpine terrain



Avalanche danger will rise to moderate during the day

In classic springtime conditions, avalanche danger is subject to swift-moving fluctuation known as the daytime danger cycle. Through a combination of daytime warmth and solar radiation, naturally triggered wet-snow avalanches can trigger as the day unfolds, some of which can grow to large size. On steep grass-covered slopes, glide-snow avalanches are possible. On shady high-altitude slopes are also avalanche prone locations in the form of older snowdrifts where a slab avalanche can be triggered, primarily by large additional loading of the snowpack.

Snowpack structure

Due to daytime warming combined with intensive solar radiation, the firmness which the snowpack gains during nights of clear skies is then forfeited swiftly during the daytime. The snowpack becomes moist or wet and thereby loses its stability. Naturally triggered wet-snow avalanches and isolated glide-snow avalanches can trigger as a result. In shady high-alpine terrain, there are still reserves of cold inside the snowpack. Older snowdrifts are still trigger-sensitive in places.

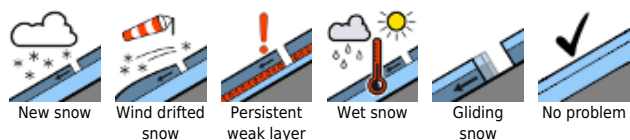
Weather

On Thursday, quite sunny intermittently, but intermediate-to-high altitude clouds will pass through repeatedly and convective cloud build-up is anticipated. Isolated, brief rain showers cannot be ruled out. Winds will be northwesterly, intensifying during the daytime, reaching strong-to-storm velocity in late afternoon. Temperature at midday at 1500 m, +11 degrees; at 2000 m, +6 degrees.

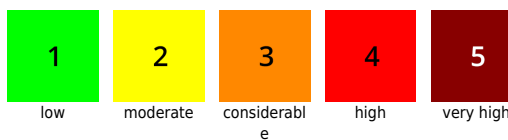
Outlook

On Thursday night in the northern mountain ranges in particular, showers will be possible, fresh snowdrift patches can form in high alpine regions. During the daytime on Friday, variable and instable conditions await us. Low-to-intermediate altitude clouds will alternate with short sunny intervals, intermittent showers are possible everywhere in Styria. Temperatures will recede in the coming days and, thereby, the danger of wet-snow avalanches will also decrease.

Avalanche problems



Danger ratings



Expositions



01.04.2021, afternoon

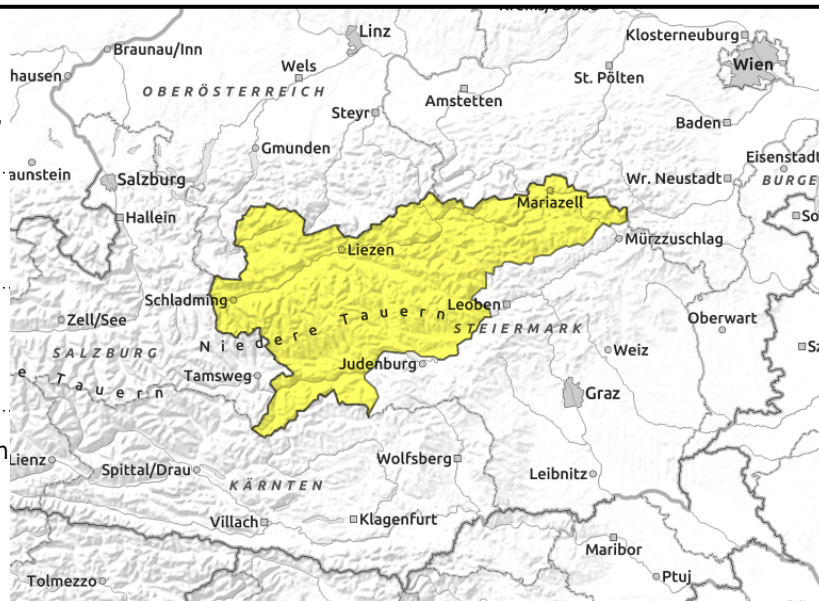
Totes Gebirge, Dachsteingebiet, Schladminger Tauern, Gurktaler Alpen, Südliche Wölzer Tauern, Nördliche Wölzer Tauern, Rottenmanner Tauern, Ennstaler Alpen, Seckauer Tauern, Eisenerzer Alpen, Hochschwabgebiet, Mürzsteger Alpen



daytime cycle of naturally triggered avalanches



in shady and high-alpine terrain



Avalanche danger will rise to moderate during the day

In classic springtime conditions, avalanche danger is subject to swift-moving fluctuation known as the daytime danger cycle. Through a combination of daytime warmth and solar radiation, naturally triggered wet-snow avalanches can trigger as the day unfolds, some of which can grow to large size. On steep grass-covered slopes, glide-snow avalanches are possible. On shady high-altitude slopes are also avalanche prone locations in the form of older snowdrifts where a slab avalanche can be triggered, primarily by large additional loading of the snowpack.

Snowpack structure

Due to daytime warming combined with intensive solar radiation, the firmness which the snowpack gains during nights of clear skies is then forfeited swiftly during the daytime. The snowpack becomes moist or wet and thereby loses its stability. Naturally triggered wet-snow avalanches and isolated glide-snow avalanches can trigger as a result. In shady high-alpine terrain, there are still reserves of cold inside the snowpack. Older snowdrifts are still trigger-sensitive in places.

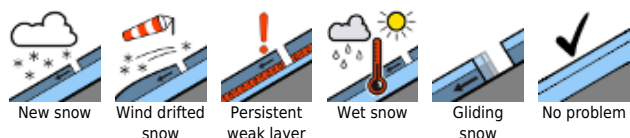
Weather

On Thursday, quite sunny intermittently, but intermediate-to-high altitude clouds will pass through repeatedly and convective cloud build-up is anticipated. Isolated, brief rain showers cannot be ruled out. Winds will be northwesterly, intensifying during the daytime, reaching strong-to-storm velocity in late afternoon. Temperature at midday at 1500 m, +11 degrees; at 2000 m, +6 degrees.

Outlook

On Thursday night in the northern mountain ranges in particular, showers will be possible, fresh snowdrift patches can form in high alpine regions. During the daytime on Friday, variable and instable conditions await us. Low-to-intermediate altitude clouds will alternate with short sunny intervals, intermittent showers are possible everywhere in Styria. Temperatures will recede in the coming days and, thereby, the danger of wet-snow avalanches will also decrease.

Avalanche problems



Danger ratings



Expositions

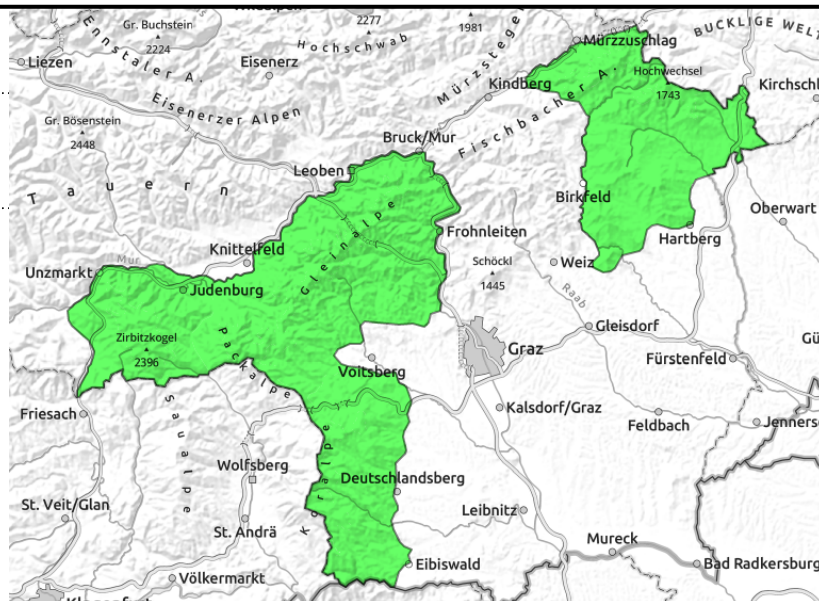


01.04.2021, morning

Seetaler Alpen, Stub- und Gleinalpe, Koralpe, Östliche Fischbacher Alpen und Wechselgebiet



daytime cycle of naturally triggered avalanches



Avalanche danger will rise to moderate during the day

In classic springtime conditions, avalanche danger is subject to fluctuation known as the daytime danger cycle, it will rise to moderate at higher and still snow-deep places during the daytime. Through a combination of daytime warmth and solar radiation, naturally triggered wet-snow avalanches can trigger as the day unfolds.

Snowpack structure

Due to daytime warming combined with intensive solar radiation, the firmness which the snowpack gains during nights of clear skies is then forfeited swiftly during the daytime. The snowpack becomes moist or wet and thereby loses its stability. Naturally triggered wet-snow avalanches can trigger as a result. In this region there is less snow on the ground in general, the slopes are rapidly becoming bare.

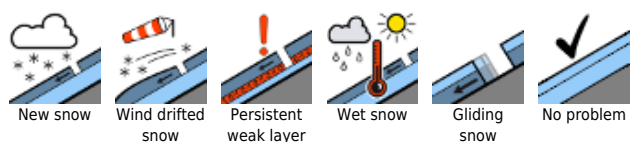
Weather

On Thursday, quite sunny intermittently, but intermediate-to-high altitude clouds will pass through repeatedly and convective cloud build-up is anticipated. Isolated, brief rain showers cannot be ruled out. Winds will be northwesterly, intensifying during the daytime, reaching strong-to-storm velocity in late afternoon. Temperature at midday at 1500 m, +11 degrees; at 2000 m, +6 degrees.

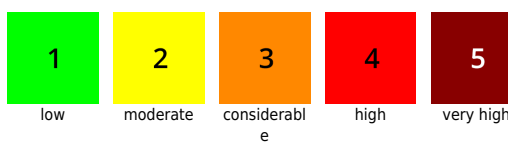
Outlook

On Thursday night in the northern mountain ranges in particular, showers will be possible, fresh snowdrift patches can form in high alpine regions. During the daytime on Friday, variable and instable conditions await us. Low-to-intermediate altitude clouds will alternate with short sunny intervals, intermittent showers are possible everywhere in Styria. Temperatures will recede in the coming days and, thereby, the danger of wet-snow avalanches will also decrease.

Avalanche problems



Danger ratings



Expositions

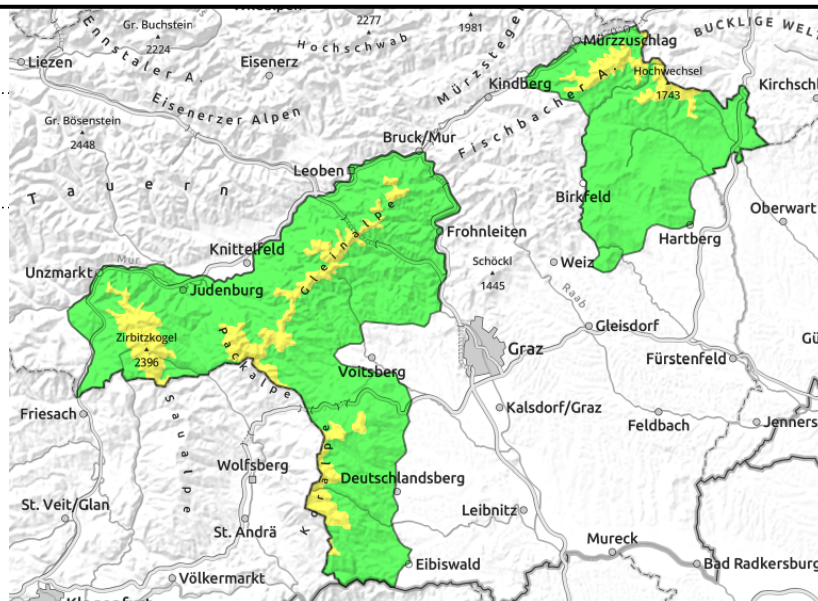


01.04.2021, afternoon

Seetaler Alpen, Stub- und Gleinalpe, Koralpe, Östliche Fischbacher Alpen und Wechselgebiet



daytime cycle of naturally triggered avalanches



Avalanche danger will rise to moderate during the day

In classic springtime conditions, avalanche danger is subject to fluctuation known as the daytime danger cycle, it will rise to moderate at higher and still snow-deep places during the daytime. Through a combination of daytime warmth and solar radiation, naturally triggered wet-snow avalanches can trigger as the day unfolds.

Snowpack structure

Due to daytime warming combined with intensive solar radiation, the firmness which the snowpack gains during nights of clear skies is then forfeited swiftly during the daytime. The snowpack becomes moist or wet and thereby loses its stability. Naturally triggered wet-snow avalanches can trigger as a result. In this region there is less snow on the ground in general, the slopes are rapidly becoming bare.

Weather

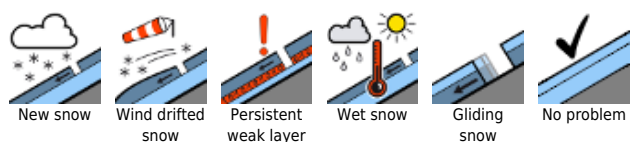
On Thursday, quite sunny intermittently, but intermediate-to-high altitude clouds will pass through repeatedly and convective cloud build-up is anticipated. Isolated, brief rain showers cannot be ruled out. Winds will be northwesterly, intensifying during the daytime, reaching strong-to-storm velocity in late afternoon. Temperature at midday at 1500 m, +11 degrees; at 2000 m, +6 degrees.

Outlook

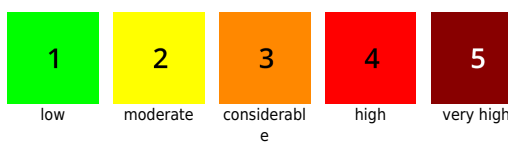
On Thursday night in the northern mountain ranges in particular, showers will be possible, fresh snowdrift patches can form in high alpine regions. During the daytime on Friday, variable and instable conditions await us. Low-to-intermediate altitude clouds will alternate with short sunny intervals, intermittent showers are possible everywhere in Styria. Temperatures will recede in the coming days and, thereby, the danger of wet-snow avalanches will also decrease.

Translated by Jeffrey McCabe, www.creativtrans.com

Avalanche problems



Danger ratings



Expositions

