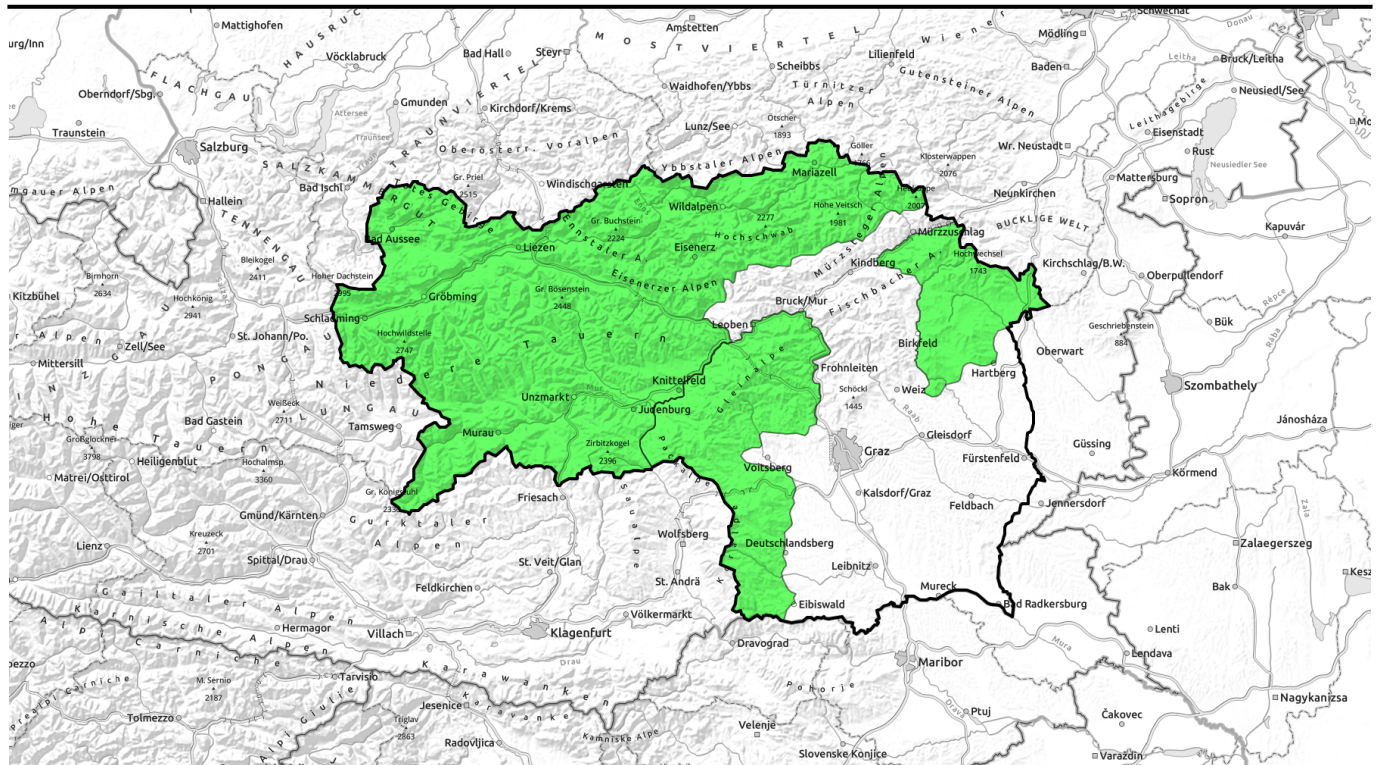



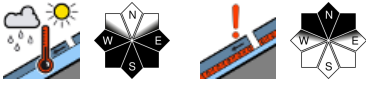

31.03.2021, morning




Very sunny, quite mild mountain weather. Daytime danger cycle.

- 

Totes Gebirge, Dachsteingebiet, Schladminger Tauern, Nördliche Wölzer Tauern, Rottenmanner Tauern, Ennstaler Alpen, Hochschwabgebiet, Mürzsteger Alpen, Eisenerzer Alpen, Seckauer Tauern, Südliche Wölzer Tauern, Gurktaler Alpen, Seetaler Alpen


- 

Koralpe, Stub- und Gleinalpe, Östliche Fischbacher Alpen und Wechselgebiet



Avalanche problems



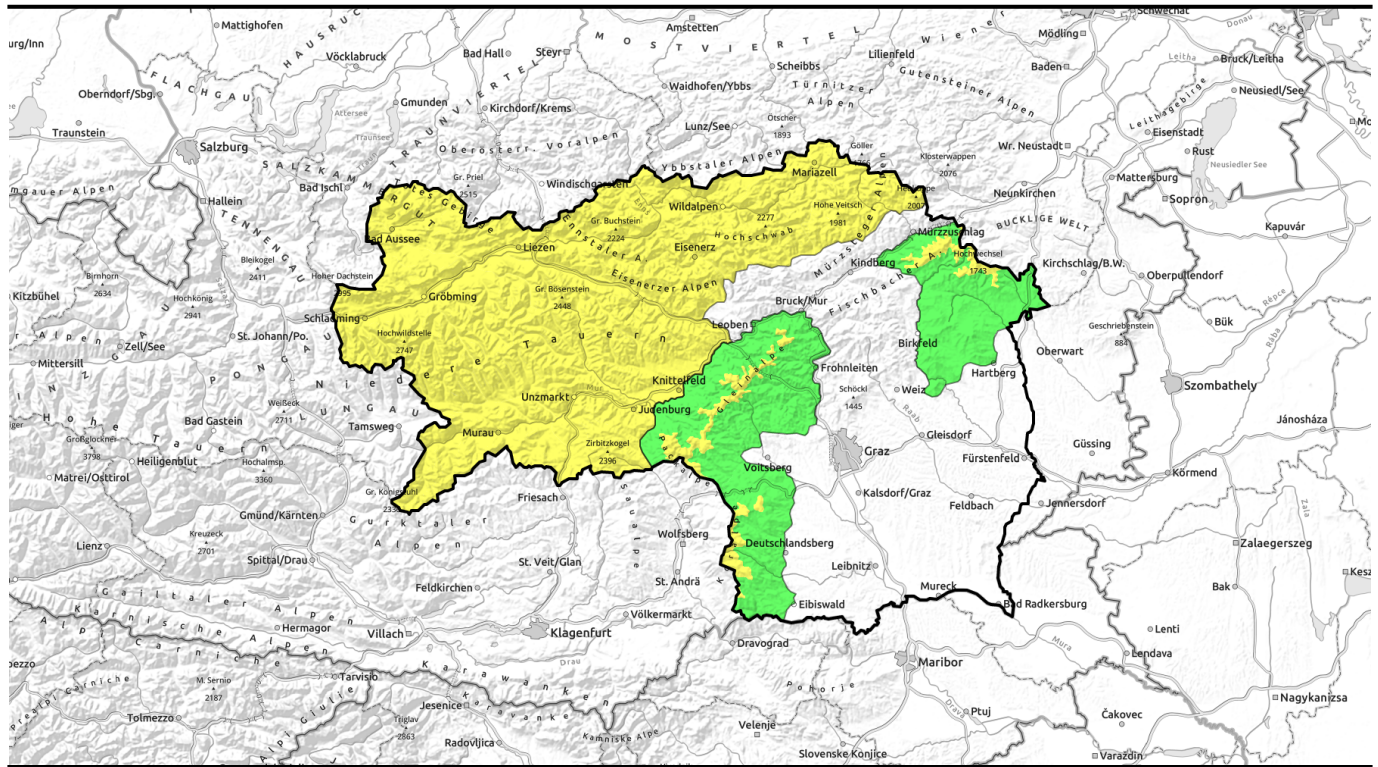
Danger ratings








Expositions






31.03.2021, afternoon








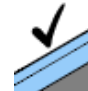
Sehr sonniges und überaus mildes Bergwetter, Tagesgang der Lawinengefahr!

	Totes Gebirge, Dachsteingebiet, Schladminger Tauern, Nördliche Wölzer Tauern, Rottenmanner Tauern, Ennstaler Alpen, Hochschwabgebiet, Mürzsteger Alpen, Eisenerzer Alpen, Seckauer Tauern, Südliche Wölzer Tauern, Gurktaler Alpen, Seetaler Alpen	   
---	--	---

	Koralpe, Stub- und Gleinalpe, Östliche Fischbacher Alpen und Wechselgebiet	 
---	--	---

1600 m

Avalanche problems

					
New snow	Wind drifted snow	Persistent weak layer	Wet snow	Gliding snow	No problem

Danger ratings

1	2	3	4	5
low	moderate	considerabl e	high	very high

Expositions



31.03.2021, morning

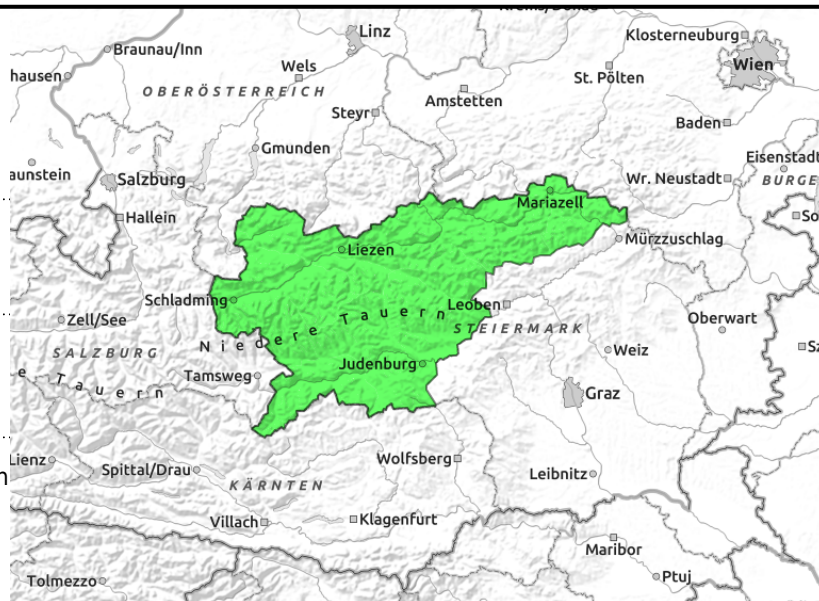
Totes Gebirge, Dachsteingebiet, Schladminger Tauern, Nördliche Wölzer Tauern, Rottenmanner Tauern, Ennstaler Alpen, Hochschwabgebiet, Mürzsteiger Alpen, Eisenerzer Alpen, Seckauer Tauern, Südliche Wölzer Tauern, Gurktaler Alpen, Seetaler Alpen



daytime cycle of naturally triggered avalanches



in shady and high-alpine terrain



Avalanche danger will rise to moderate during the day

In these classic springtime conditions, avalanche danger is subject to fluctuations, known as the daytime danger cycle. Through a combination of daytime warmth and solar radiation, naturally triggered wet-snow avalanches can trigger with increasing frequency in steep terrain as the day unfolds. On steep grass-covered slopes, glide-snow avalanches are possible, ordinarily “announced” prior to release by open glide cracks in the snowpack surface. Beyond that, on shady high-altitude slopes are also avalanche prone locations in the form of older snowdrifts where a slab avalanche can be triggered, primarily by large additional loading of the snowpack.

Snowpack structure

Due to daytime warming combined with intensive solar radiation, the firmness which the snowpack gains during nights of clear skies is then forfeited swiftly during the daytime. The snowpack becomes moist or wet and thereby loses its stability. Naturally triggered wet-snow avalanches and glide-snow avalanches (due to a slippery ground-level film on grassy slopes) can trigger as a result. In shady high-alpine terrain, in addition, there is a so-called old-snow problem: in this case it is the older snowdrifts which are still prone to triggering.

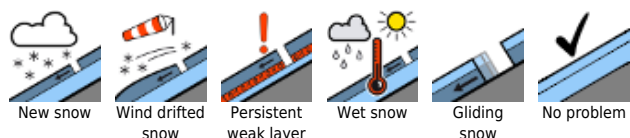
Weather

Following a night of predominantly clear skies in Styria, brilliant sunshine awaits us on Wednesday. In isolated cases during the course of the day, convective cloud build-up is possible, but will remain harmless. Winds will shift to southerly, be blowing mostly at light strength. The springlike mild temperatures will lie at +14 degrees at 1500 m; +9 degrees at 2000 m.

Outlook

Also on Thursday, temperatures of +11 degrees at 1500 m and +6 degrees at 2000 m will be mild. A moderate NW wind will be blowing, more clouds are anticipated. These will hamper nighttime outgoing longwave radiation, but also reduce direct solar radiation during the daytime. Avalanche danger is not expected to change significantly.

Avalanche problems



Danger ratings



Expositions



31.03.2021, afternoon

Totes Gebirge, Dachsteingebiet, Schladminger Tauern, Nördliche Wölzer Tauern, Rottenmanner Tauern, Ennstaler Alpen, Hochschwabgebiet, Mürzsteiger Alpen, Eisenerzer Alpen, Seckauer Tauern, Südliche Wölzer Tauern, Gurktaler Alpen, Seetaler Alpen



daytime cycle of naturally triggered avalanches



in shady and high-alpine terrain



Avalanche danger will rise to moderate during the day

In these classic springtime conditions, avalanche danger is subject to fluctuations, known as the daytime danger cycle. Through a combination of daytime warmth and solar radiation, naturally triggered wet-snow avalanches can trigger with increasing frequency in steep terrain as the day unfolds. On steep grass-covered slopes, glide-snow avalanches are possible, ordinarily “announced” prior to release by open glide cracks in the snowpack surface. Beyond that, on shady high-altitude slopes are also avalanche prone locations in the form of older snowdrifts where a slab avalanche can be triggered, primarily by large additional loading of the snowpack.

Snowpack structure

Due to daytime warming combined with intensive solar radiation, the firmness which the snowpack gains during nights of clear skies is then forfeited swiftly during the daytime. The snowpack becomes moist or wet and thereby loses its stability. Naturally triggered wet-snow avalanches and glide-snow avalanches (due to a slippery ground-level film on grassy slopes) can trigger as a result. In shady high-alpine terrain, in addition, there is a so-called old-snow problem: in this case it is the older snowdrifts which are still prone to triggering.

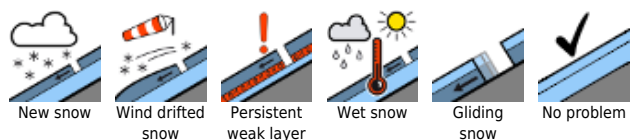
Weather

Following a night of predominantly clear skies in Styria, brilliant sunshine awaits us on Wednesday. In isolated cases during the course of the day, convective cloud build-up is possible, but will remain harmless. Winds will shift to southerly, be blowing mostly at light strength. The springlike mild temperatures will lie at +14 degrees at 1500 m; +9 degrees at 2000 m.

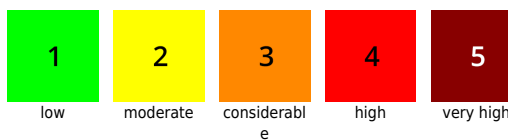
Outlook

Also on Thursday, temperatures of +11 degrees at 1500 m and +6 degrees at 2000 m will be mild. A moderate NW wind will be blowing, more clouds are anticipated. These will hamper nighttime outgoing longwave radiation, but also reduce direct solar radiation during the daytime. Avalanche danger is not expected to change significantly.

Avalanche problems



Danger ratings



Expositions

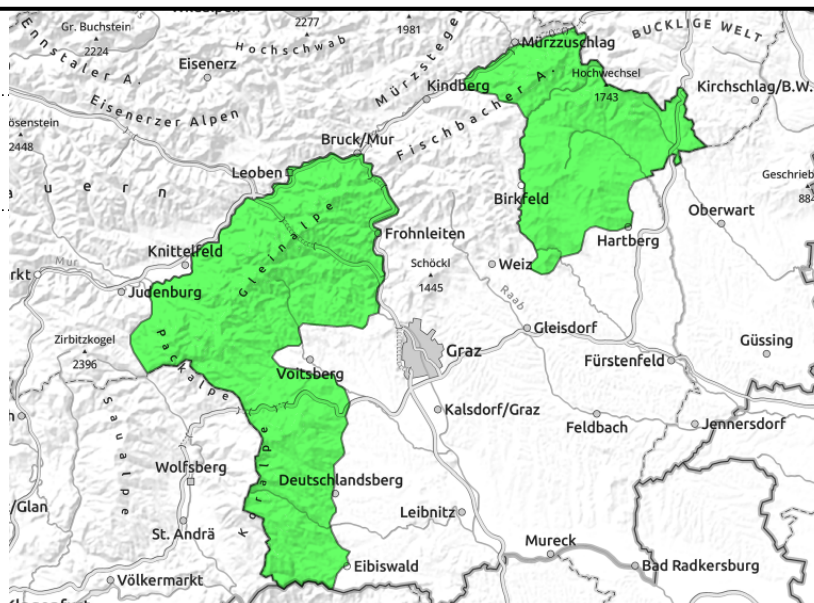


31.03.2021, morning

Koralpe, Stub- und Gleinalpe, Östliche Fischbacher Alpen und Wechselgebiet



daytime cycle of avalanche danger



Avalanche danger will increase to moderate during the day

In these classic springtime conditions, avalanche danger is subject to fluctuations, known as the daytime danger cycle. Avalanche danger increases to moderate during the course of the day at higher altitudes which still have ample snow depths. Through a combination of daytime warmth and solar radiation, naturally triggered wet-snow avalanches can trigger in steep terrain as the day unfolds.

Snowpack structure

The firmness regained during the nocturnal hours is swiftly lost during the daytime as the snowpack surface becomes moist or wet. Through this destabilisation, naturally triggered wet-snow slides or (depending on the ground-level film on steep grassy slopes) glide-snow avalanches become possible. In general, there is little snow at these altitudes and the slopes are becoming ever more bare as the mild springtime weather progresses.

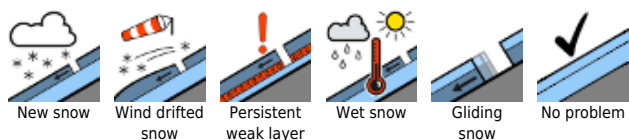
Weather

Following a night of predominantly clear skies in Styria, brilliant sunshine awaits us on Wednesday. In isolated cases during the course of the day, convective cloud build-up is possible, but will remain harmless. Winds will shift to southerly, be blowing mostly at light strength. The springlike mild temperatures will lie at +14 degrees at 1500 m; +9 degrees at 2000 m.

Outlook

Also on Thursday, temperatures of +11 degrees at 1500 m and +6 degrees at 2000 m will be mild. A moderate NW wind will be blowing, more clouds are anticipated. These will hamper nighttime outgoing longwave radiation, but also reduce direct solar radiation during the daytime. Avalanche danger is not expected to change significantly.

Avalanche problems



Danger ratings

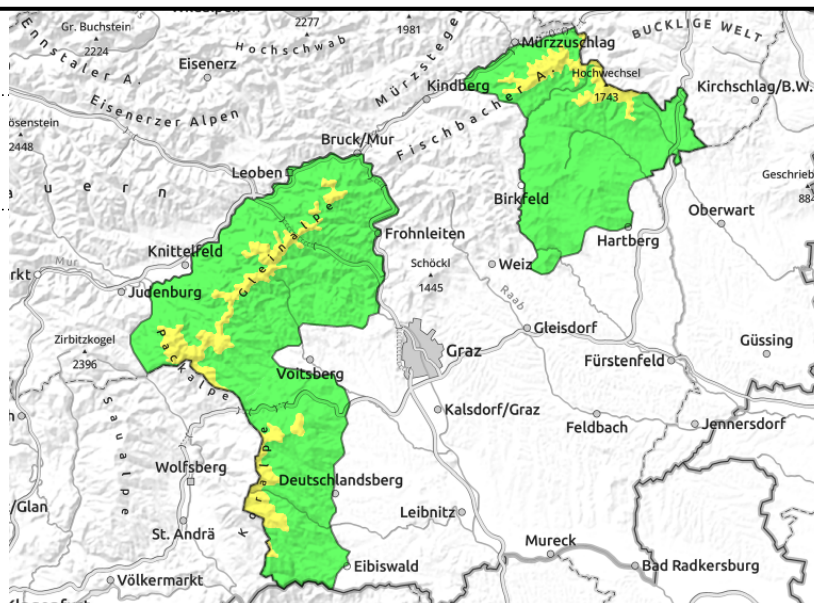
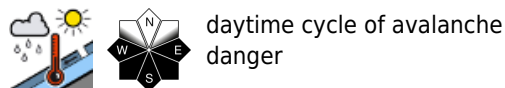


Expositions



31.03.2021, afternoon

Koralpe, Stub- und Gleinalpe, Östliche Fischbacher Alpen und Wechselgebiet



Avalanche danger will increase to moderate during the day

In these classic springtime conditions, avalanche danger is subject to fluctuations, known as the daytime danger cycle. Avalanche danger increases to moderate during the course of the day at higher altitudes which still have ample snow depths. Through a combination of daytime warmth and solar radiation, naturally triggered wet-snow avalanches can trigger in steep terrain as the day unfolds.

Snowpack structure

The firmness regained during the nocturnal hours is swiftly lost during the daytime as the snowpack surface becomes moist or wet. Through this destabilisation, naturally triggered wet-snow slides or (depending on the ground-level film on steep grassy slopes) glide-snow avalanches become possible. In general, there is little snow at these altitudes and the slopes are becoming ever more bare as the mild springtime weather progresses.

Weather

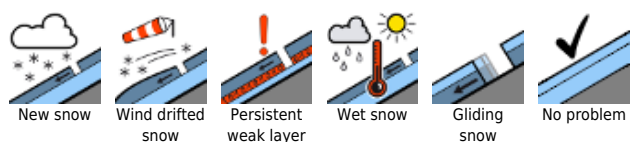
Following a night of predominantly clear skies in Styria, brilliant sunshine awaits us on Wednesday. In isolated cases during the course of the day, convective cloud build-up is possible, but will remain harmless. Winds will shift to southerly, be blowing mostly at light strength. The springlike mild temperatures will lie at +14 degrees at 1500 m; +9 degrees at 2000 m.

Outlook

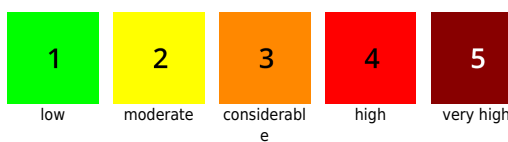
Also on Thursday, temperatures of +11 degrees at 1500 m and +6 degrees at 2000 m will be mild. A moderate NW wind will be blowing, more clouds are anticipated. These will hamper nighttime outgoing longwave radiation, but also reduce direct solar radiation during the daytime. Avalanche danger is not expected to change significantly.

Translated by Jeffrey McCabe, www.creativtrans.com

Avalanche problems



Danger ratings



Expositions

