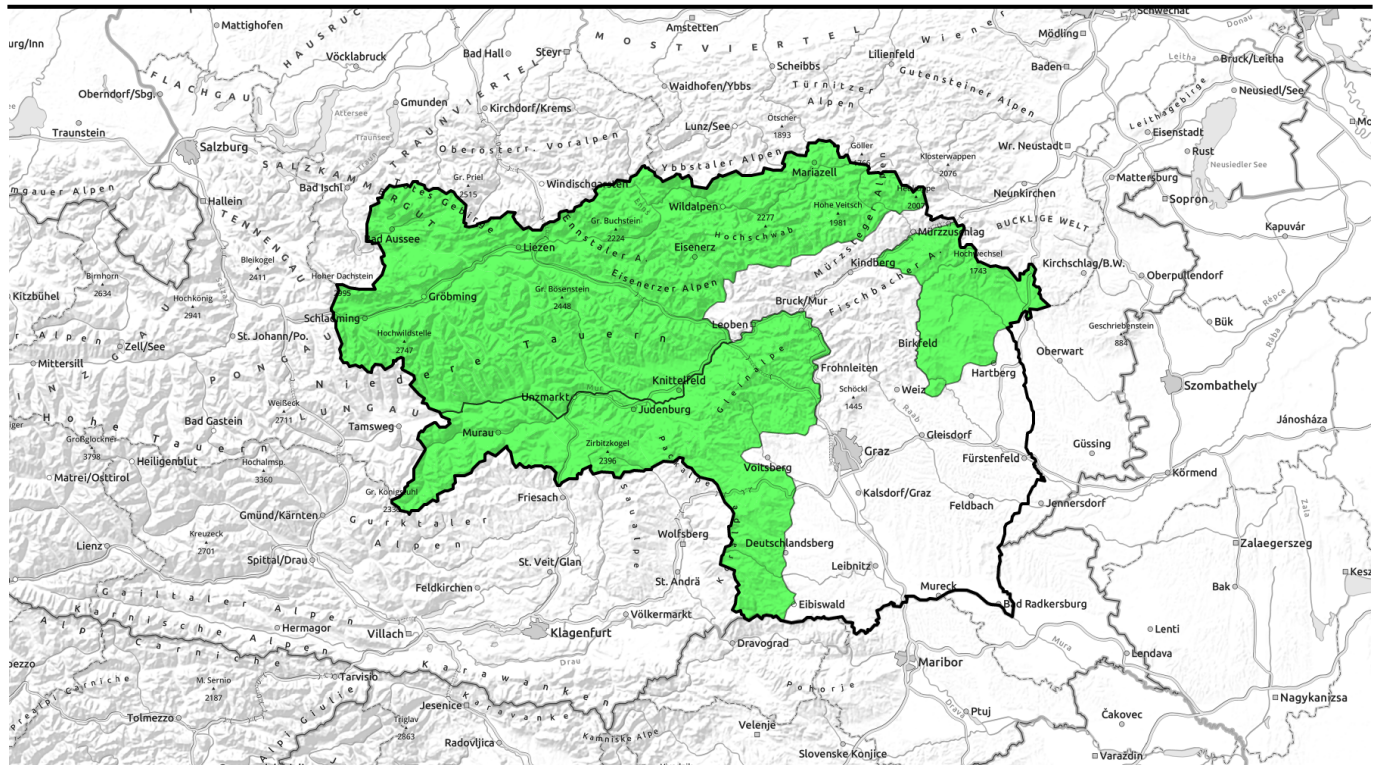






29.03.2021, morning



Daytime cycle of avalanche danger

	<p>Schludminger Tauern, Dachsteingebiet, Totes Gebirge, Nördliche Wölzer Tauern, Südliche Wölzer Tauern, Rottenmanner Tauern, Ennstaler Alpen, Seckauer Tauern, Eisenerzer Alpen, Hochschwabgebiet, Mürzsteger Alpen</p>	
	<p>Gurktaler Alpen, Seetaler Alpen, Stub- und Gleinalpe, Koralpe, Östliche Fischbacher Alpen und Wechselgebiet</p>	

Avalanche problems



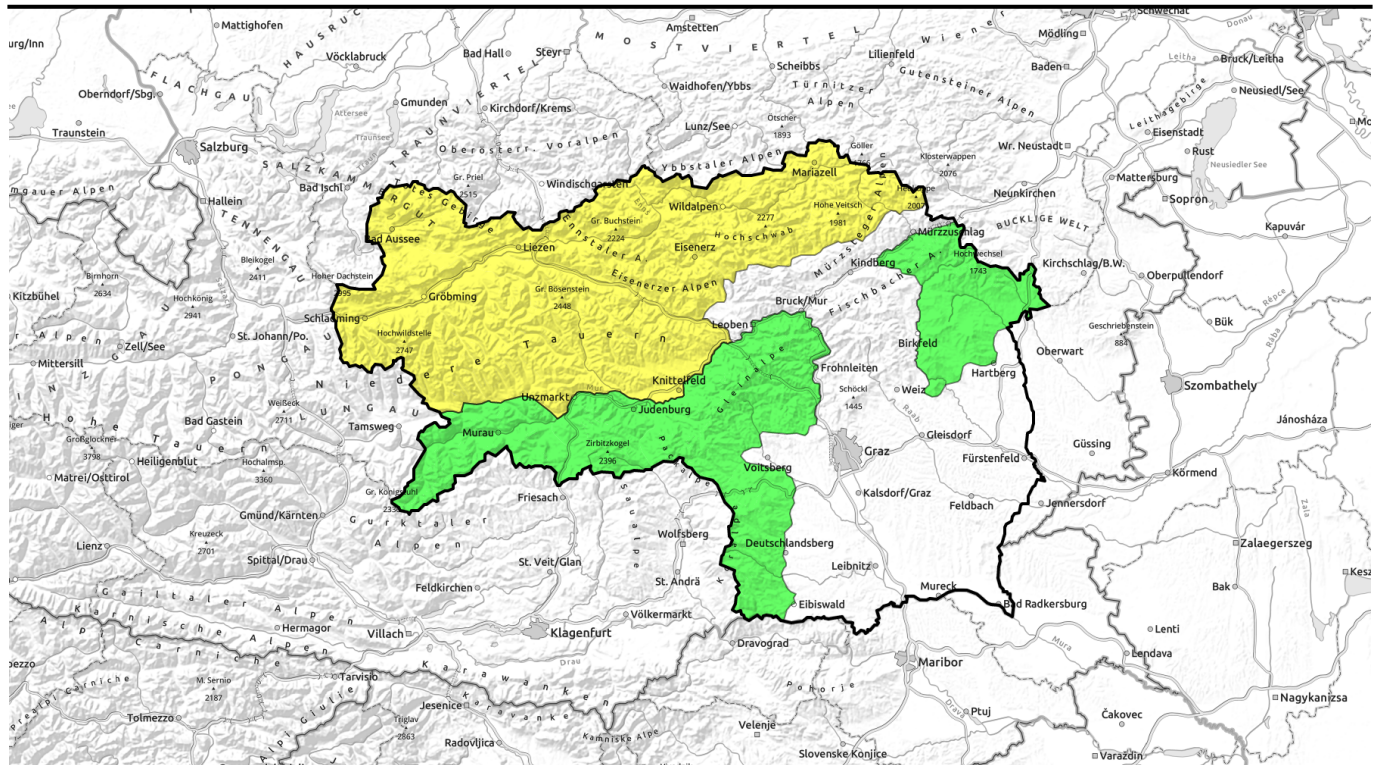
Danger ratings




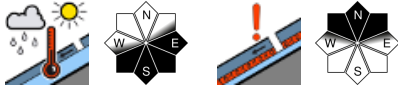


Expositions



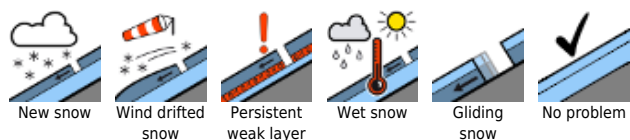
29.03.2021, afternoon



Tagesgang der Lawinengefahr!

	<p>Schladinger Tauern, Dachsteingebiet, Totes Gebirge, Nördliche Wölzer Tauern, Südliche Wölzer Tauern, Rottenanner Tauern, Ennstaler Alpen, Seckauer Tauern, Eisenerzer Alpen, Hochschwabgebiet, Mürzsteger Alpen</p>	
	<p>Gurktaler Alpen, Seetaler Alpen, Stub- und Glainalpe, Koralpe, Östliche Fischbacher Alpen und Wechselgebiet</p>	

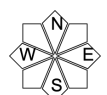
Avalanche problems



Danger ratings

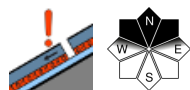
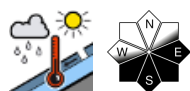


Expositions

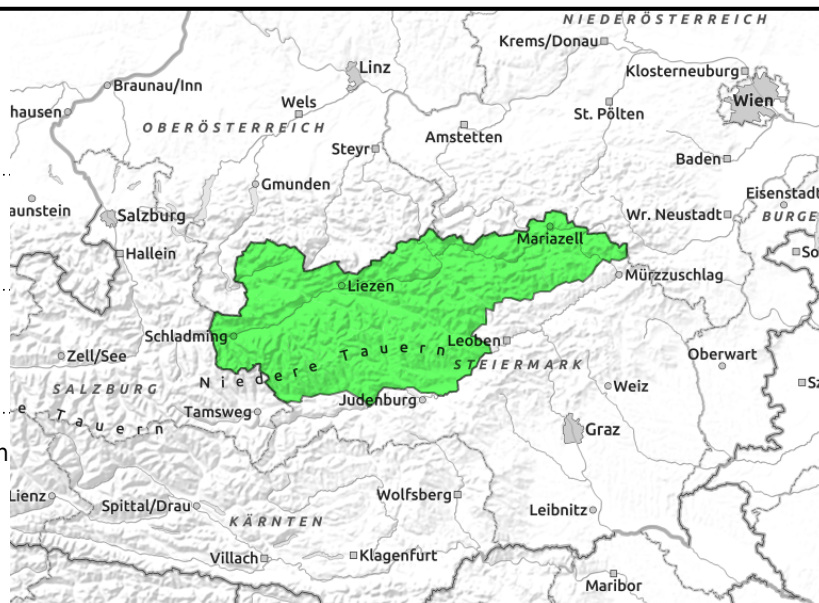


29.03.2021, morning

Schladminger Tauern, Dachsteingebiet, Totes Gebirge, Nördliche Wölzer Tauern, Südliche Wölzer Tauern, Rottenmanner Tauern, Ennstaler Alpen, Seckauer Tauern, Eisenerzer Alpen, Hochschwabgebiet, Mürzsteger Alpen



in shady and high-alpine terrain



Caution urged at high altitudes

Avalanche danger is subject to a daily danger cycle. At high altitudes on steep slopes, wet-snow avalanches can be triggered naturally during the day. At low and intermediate altitudes, naturally triggered wet-snow slides and glide-snow avalanches are still possible.

Slab avalanche danger: isolated avalanche prone locations are found on north-facing slopes. Older snowdrift accumulations can be triggered in extremely steep terrain by large additional loading.

Snowpack structure

The snowpack was able to settle further. On north-facing high alpine slopes there are older snowdrifts deposited atop a softened layer, or else a very hard layer.

At intermediate altitudes the snow has become moist or rotten.

Weather

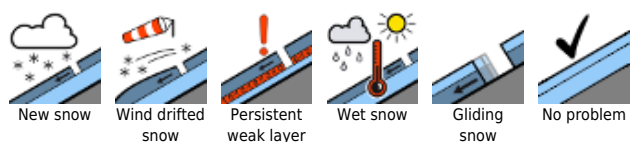
High-pressure weather conditions will bring sunny and mild weather to the mountains on Monday. Intermittently, clouds will pass through at high altitude. Winds from the northwest will be brisk. Temperatures will rise at all altitudes. At 2000 m: +4 degrees is possible. Winds will be moderate from the northwest.

On Tuesday it will continue to be sunny and mild.

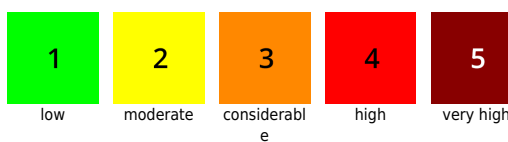
Outlook

Daytime danger cycle needs to be given attention.

Avalanche problems



Danger ratings

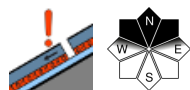
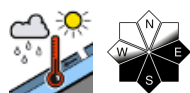


Expositions

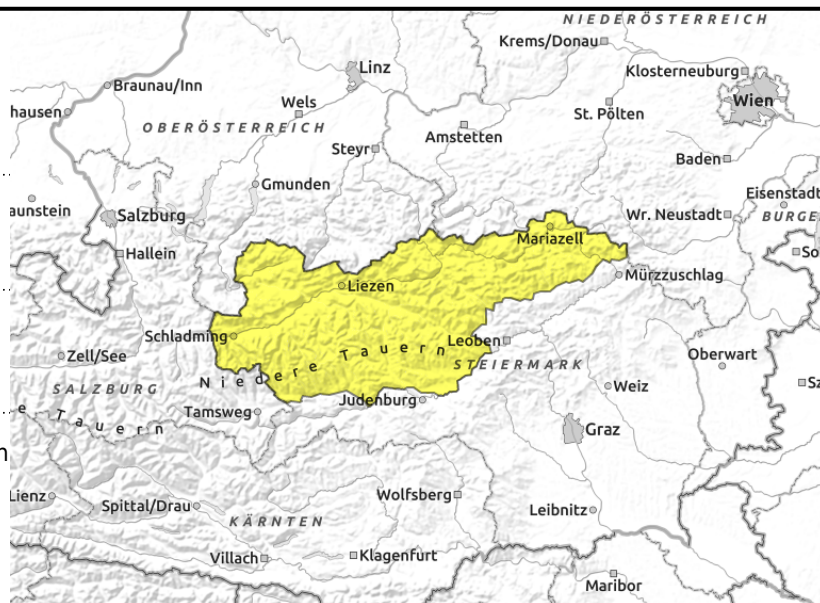


29.03.2021, afternoon

Schladminger Tauern, Dachsteingebiet, Totes Gebirge, Nördliche Wölzer Tauern, Südliche Wölzer Tauern, Rottenmanner Tauern, Ennstaler Alpen, Seckauer Tauern, Eisenerzer Alpen, Hochschwabgebiet, Mürzsteger Alpen



in shady and high-alpine terrain



Caution urged at high altitudes

Avalanche danger is subject to a daily danger cycle. At high altitudes on steep slopes, wet-snow avalanches can be triggered naturally during the day. At low and intermediate altitudes, naturally triggered wet-snow slides and glide-snow avalanches are still possible.

Slab avalanche danger: isolated avalanche prone locations are found on north-facing slopes. Older snowdrift accumulations can be triggered in extremely steep terrain by large additional loading.

Snowpack structure

The snowpack was able to settle further. On north-facing high alpine slopes there are older snowdrifts deposited atop a softened layer, or else a very hard layer.

At intermediate altitudes the snow has become moist or rotten.

Weather

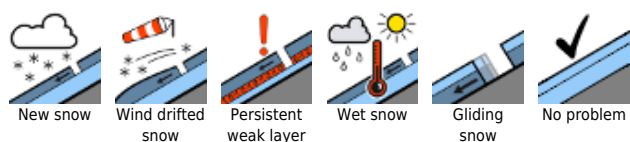
High-pressure weather conditions will bring sunny and mild weather to the mountains on Monday. Intermittently, clouds will pass through at high altitude. Winds from the northwest will be brisk. Temperatures will rise at all altitudes. At 2000 m: +4 degrees is possible. Winds will be moderate from the northwest.

On Tuesday it will continue to be sunny and mild.

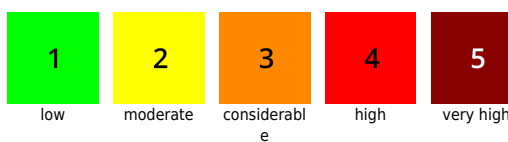
Outlook

Daytime danger cycle needs to be given attention.

Avalanche problems



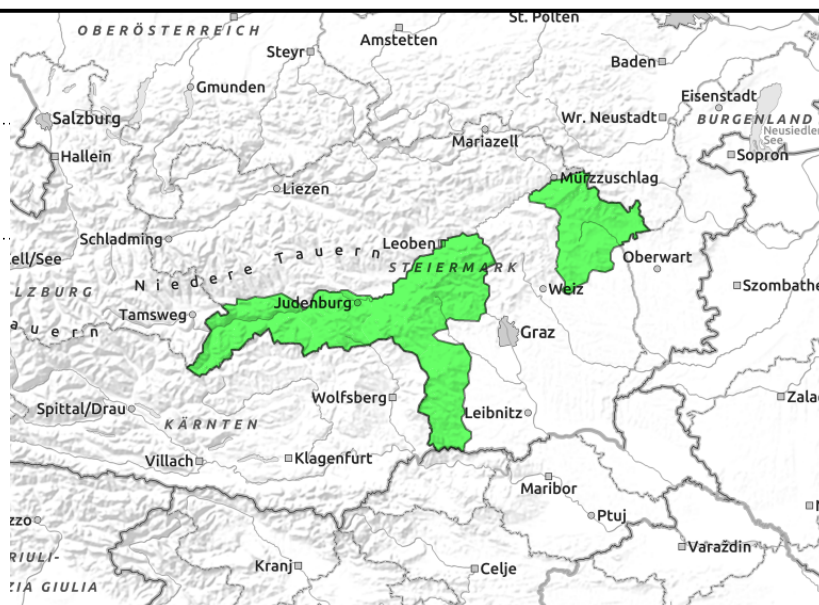
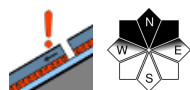
Danger ratings



Expositions



Gurktaler Alpen, Seetaler Alpen, Stub- und Gleinalpe, Korralpe, Östliche Fischbacher Alpen und Wechselgebiet



Low avalanche danger. Isolated avalanche prone locations on north-facing slopes

Isolated danger zones are found in ridgeline terrain on north-facing slopes. Here, a slab avalanche can possibly be triggered in extremely steep terrain. At intermediate altitudes, naturally triggered wet-snow slides over the ground are possible.

Snowpack structure

The snowpack was able to settle. On Sunday night a melt-freeze crust capable of bearing loads will form. The snowpack fundament is largely stable. Potential weak layers of faceted crystals, blanketed-over surface hoar or in transitions to the hard old snowpack on north-facing slopes are evident.

Weather

High-pressure weather front conditions will bring sunny and mild weather to the mountains on Monday. Intermittently, clouds will pass through at high altitude. Winds from the northwest will be brisk. Temperatures will rise at all altitudes. At 2000 m: +4 degrees is possible. Winds will be moderate from the northwest.

On Tuesday it will continue to be sunny and mild.

Outlook

Daytime danger cycle needs to be given attention on Tuesday.

Translated by Jeffrey McCabe, www.creativtrans.com

Avalanche problems



Danger ratings



Expositions

