

Danger of slab avalanches on high-altitude shady slopes



2000 m

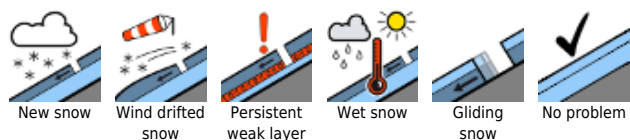
Schludminger Tauern, Dachsteingebiet, Totes Gebirge, Nördliche Wölzer Tauern



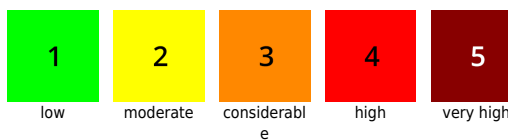
Gurktaler Alpen, Seetaler Alpen, Koralpe, Stub- und Gleinalpe, Östliche Fischbacher Alpen und Wechselgebiet, Mürtzsteger Alpen, Hochschwabgebiet, Eisenerzer Alpen, Seckauer Tauern, Südliche Wölzer Tauern, Rottenmanner Tauern, Ennstaler Alpen



Avalanche problems



Danger ratings



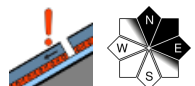
Expositions

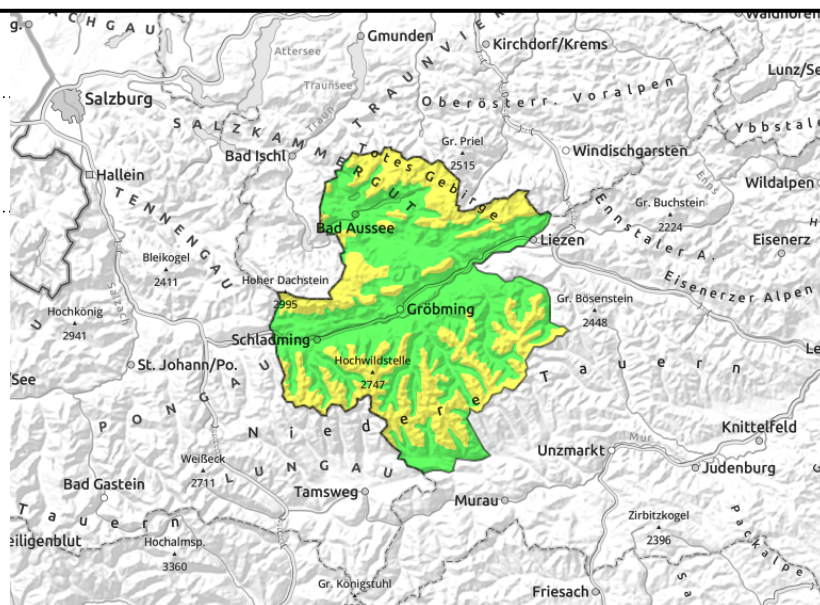


28.03.2021

Schladminger Tauern, Dachsteingebiet, Totes Gebirge, Nördliche Wölzer Tauern



 In gullies, steep bowls, shady and high-alpine terrain



Caution still urged in high altitude regions

Avalanche danger above 2000 m is moderate. Avalanche prone locations are found on north and east-facing slopes. Older snowdrift accumulations can be triggered even by minimum additional loading on extremely steep slopes.

At low and intermediate altitudes, naturally triggered slides and glide-snow avalanches are still possible.

Snowpack structure

The snowpack was able to settle further. On east and north-facing slopes the older snowdrifts lie deposited atop a soft or else a very hard layer. and are still inadequately bonded with the old snowpack.

The fresh snow and snowdrifts (5 cm) lie deposited atop an old snowpack and are not well bonded with the layers beneath them.

Weather

Sunday will bring cool weather to the mountains. Nonetheless, sunny weather will dominate all day long in the northwestern regions. Winds will be blowing at moderate strength from the west. Temperature at 2000 m, -2 degrees. Monday will be sunny and milder.

Outlook

Daytime danger cycle needs to be given attention

Avalanche problems



Danger ratings

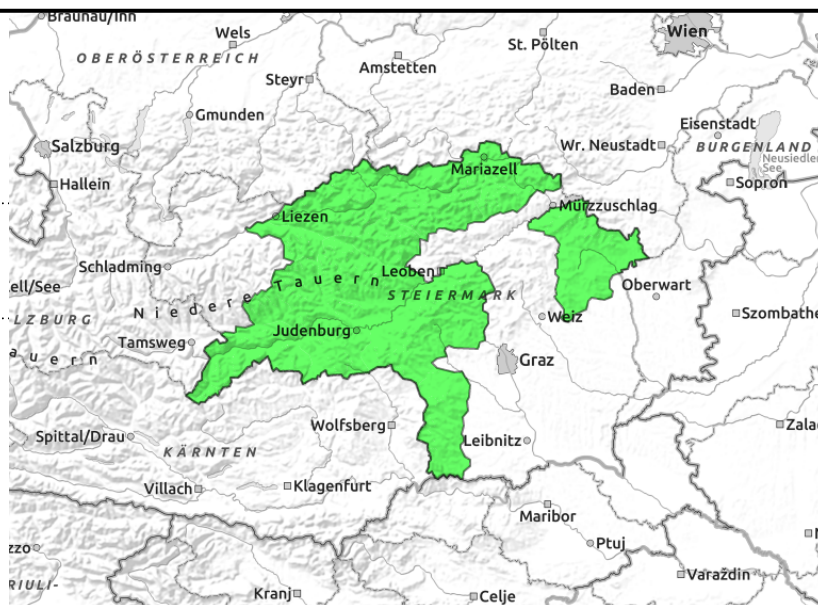
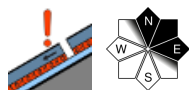


Expositions



28.03.2021

Gurktaler Alpen, Seetaler Alpen, Koralpe, Stub- und Gleinalpe, Östliche Fischbacher Alpen und Wechselgebiet, Mürtzsteiger Alpen, Hochschwabgebiet, Eisenerzer Alpen, Seckauer Tauern, Südliche Wölzer Tauern, Rottenmanner Tauern, Ennstaler Alpen



Low avalanche danger. Isolated avalanche prone locations on north-facing slopes.

Isolated danger zones are found on north-facing slopes near ridgelines. A slab avalanche triggering cannot be ruled out in extremely steep terrain there. At intermediate altitudes, naturally triggered slides over the ground are possible.

Snowpack structure

The snowpack was able to settle. The fundament is largely stable, potential weak layers of faceted crystals or blanketed-over surface hoar on north-facing slopes, or transitions to the hard old snowpack, are still evident. The fresh snow is minor. The snowpack surface became moist up to high altitudes on Saturday. With the lower temperatures, a melt-freeze crust will form.

Weather

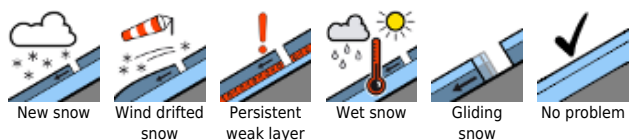
Sunday will bring us cool weather in the mountains. The general weather character will be sunny. Especially towards the northwest and in the Styrian rimline ranges, skies will frequently be overcast in the morning. Snow or rain is not expected. Wind: mostly westerly at 20-40- km/hr. Temperature at 2000 m: -4 to 0 degrees.

Outlook

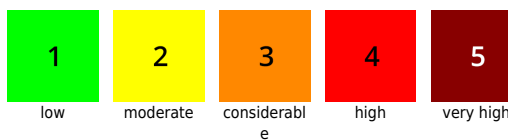
On Monday, the daytime danger cycle merits close attention.

Translated by Jeffrey McCabe, www.creativtrans.com

Avalanche problems



Danger ratings



Expositions

