
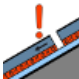




Still danger of slab avalanches on shady high-altitude slopes



 timberline

Schladminger Tauern, Dachsteingebiet, Totes Gebirge, Nördliche Wölzer Tauern, Südliche Wölzer Tauern, Seckauer Tauern, Rottenmanner Tauern, Ennstaler Alpen, Eisenerzer Alpen, Hochschwabgebiet, Mürztaler Alpen, Mürzsteger Alpen

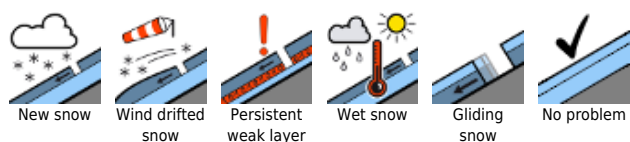





Gurktaler Alpen, Seetaler Alpen, Koralpe, Stub- und Gleinalpe, Westliche Fischbacher Alpen und Grazer Bergland, Östliche Fischbacher Alpen und Wechselgebiet

Avalanche problems



Danger ratings

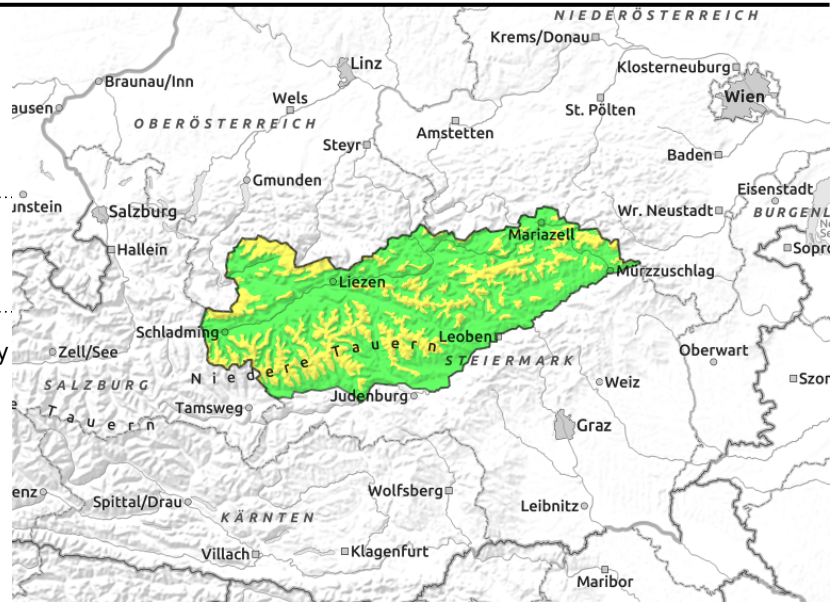
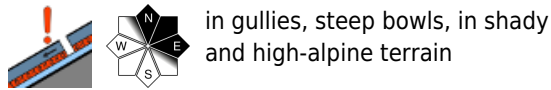


Expositions



27.03.2021

Schladminger Tauern, Dachsteingebiet, Totes Gebirge, Nördliche Wölzer Tauern, Südliche Wölzer Tauern, Seckauer Tauern, Rottenmanner Tauern, Ennstaler Alpen, Eisenerzer Alpen, Hochschwabgebiet, Mürztaler Alpen, Mürzsteiger Alpen



Caution still urged at high altitudes

Avalanche danger from the Dachstein over Niedere Tauern to the Rax is moderate. Above the treeline in N-E aspects, older snowdrift accumulations can be triggered by large additional loading, in isolated cases even by minimum additional loading.

At low and intermediate altitudes, isolated naturally triggered slides and glide-snow avalanches are still possible.

Snowpack structure

The snowpack was able to settle another notch. In east-facing and north-facing terrain the older snowdrifts lie atop a soft layer, sometimes on a very hard layer, and are not well bonded to the old snowpack.

The fresh snow and drifts (5-10 cm) lie deposited atop the old snowpack service and are not well bonded with the layers below.

Weather

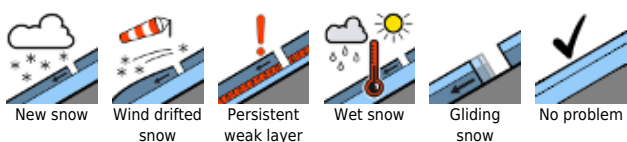
Starting at midday on Saturday, the likelihood of showers is increasing as a cold front passes through from northwest to southeast. Intensifying NW winds (gusts up to 70 km/hr) will make temperatures drop, the snowfall level will descend in the Northern Alps to below 1500 m. About 5-10 cm of fresh snow is anticipated. Temperatures will be -3 degrees at 2000 m.

Palm Sunday will initially bring heavy cloud in SE regions in particular. Precipitation is not expected in great amounts, then in the afternoon it will become increasingly sunny. Further north the weather will improve, with extended sunny phases even in the morning.

Outlook

No significant change in avalanche danger is anticipated.

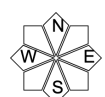
Avalanche problems



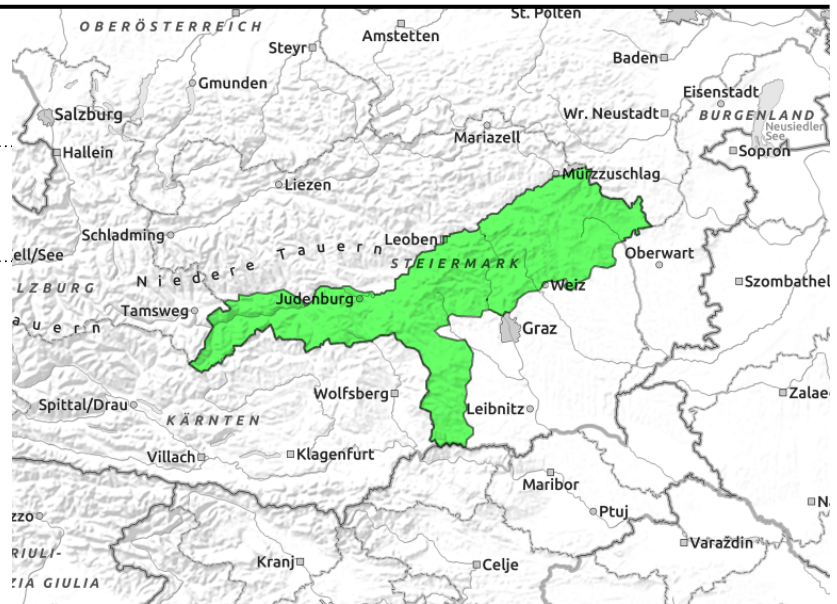
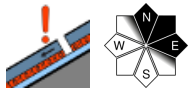
Danger ratings



Expositions



Gurktaler Alpen, Seetaler Alpen, Koralm, Stub- und Gleinalpe, Westliche Fischbacher Alpen und Grazer Bergland, Östliche Fischbacher Alpen und Wechselgebiet



Low avalanche danger

From the Turrach to Stuhleck, low avalanche danger prevails. Isolated avalanche prone locations are found on north-facing slopes near ridgelines, where triggering a slab avalanche cannot be ruled out.

Snowpack structure

The snowpack was able to settle somewhat. The fundament is largely stable, potential weak layers on north-facing slopes are faceted crystal layers, surface hoar blanketed over and transitions to the hard old snowpack. Only minor amounts of fresh snow are expected, but it will be poorly bonded with the old snowpack surface.

Weather

In the morning, particularly further south, still a few bright spells. As of midday, the likelihood of showers is increasing as a cold front passes through from northwest to southeast. Intensifying NW winds (gusts up to 70 km/hr) will make temperatures drop, the snowfall level will descend in the Northern Alps to below 1500 m. About 5-10 cm of fresh snow is anticipated. Temperatures will be -3 degrees at 2000 m.

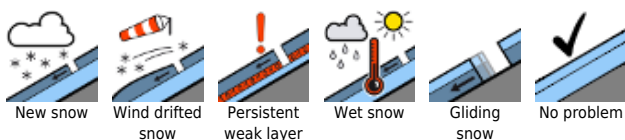
Palm Sunday will initially bring heavy cloud in SE regions in particular. Precipitation is not expected in great amounts, then in the afternoon it will become increasingly sunny. Further north the weather will improve, with extended sunny phases even in the morning.

Outlook

Avalanche danger is not expected to change significantly.

Translated by Jeffrey McCabe, www.creativtrans.com

Avalanche problems



Danger ratings



Expositions

