

Treacherous avalanche situation for backcountry skiers. Considerable danger in northern barrier cloud regions.

	Schladminger Tauern, Eisenerzer Alpen, Nördliche Wölzer Tauern, Südliche Wölzer Tauern, Rottenmanner Tauern, Hochschwabgebiet, Mürztal, Seckauer Tauern	
	Gurktaler Alpen, Seetaler Alpen, Stub- und Gleinalpe, Koralpe	
	Östliche Fischbacher Alpen und Wechselgebiet, Mürztal, Westliche Fischbacher Alpen und Grazer Bergland	
	Dachsteingebiet, Totes Gebirge, Ennstaler Alpen	

Avalanche problems



Danger ratings



Expositions

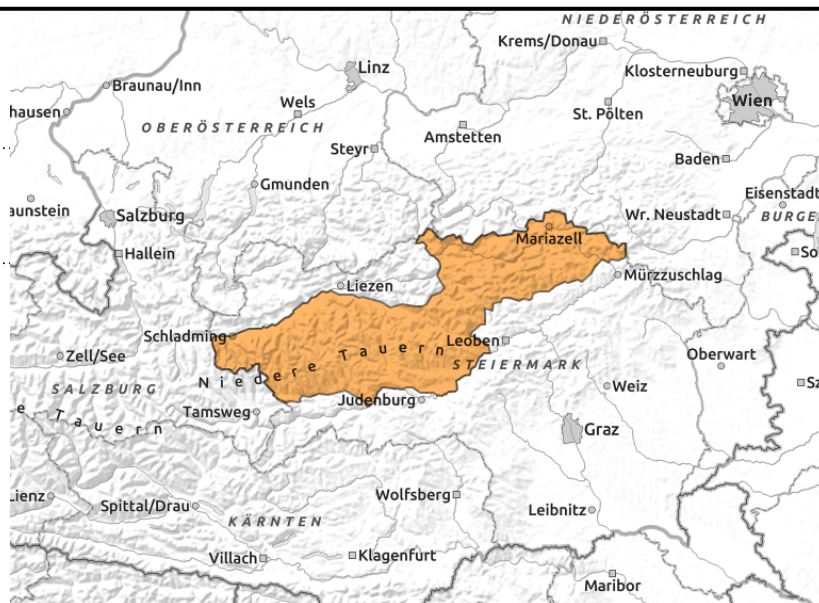


23.03.2021

Schladminger Tauern, Eisenerzer Alpen, Nördliche Wölzer Tauern, Südliche Wölzer Tauern, Rottenmanner Tauern, Hochschwabgebiet, Mürzsteiger Alpen, Seckauer Tauern



above treeline



Lots of snowdrifts. Storm winds. High caution imperative!

Avalanche danger continues to be ranked at considerable. Avalanche prone locations are found both near to and distant from ridgelines, at entries to gullies and bowls, and in general **behind protruberances**, mainly in N-E-S aspects. Triggering a slab avalanche is possible even by the weight of one single skier. Also, naturally triggered slab avalanches and loose-snow avalanches are possible. Caution urged towards cornices: they are instable.

Snowpack structure

In Niedere Tauern and Eisenerz Alps more than 30 cm of fresh snow has been registered over the last 24 hours. Due to strong-velocity winds, fresh snowdrift accumulations have been deposited atop soft layers of fresh snow. The cold fresh snow/drift are poorly bonded to the snow layer beneath. Due to storm-strength winds, depths of snowdrifts tend to increase rapidly with ascending altitude, on leeward slopes they should not be underestimated.

Weather

From Schladming Tauern to the Rax, cloud will dominate on Tuesday as well due to accumulations in barrier cloud regions. The summits will often be shrouded in fog. Snow showers will slacken off during the day. Winds will be blowing at strong velocity from the north. It will remain cold. At 2000 m: -10 degrees. On Wednesday, sunshine is expected.

Outlook

The danger of slab avalanches will gradually recede.

Avalanche problems



Danger ratings



Expositions



23.03.2021

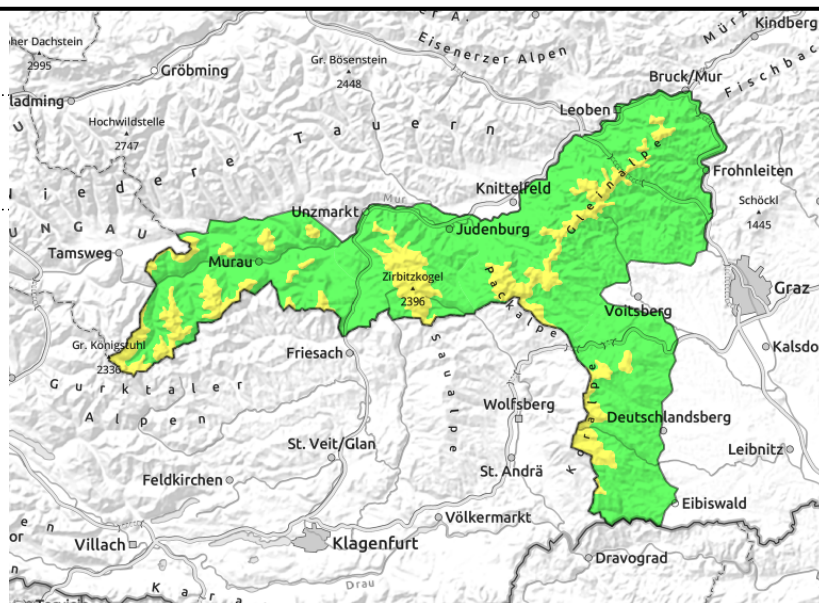
Gurktaler Alpen, Seetaler Alpen, Stub- und Gleinalpe, Koralpe



forestline



above the treeline



Strong winds bringing fresh snowdrifts

No significant change in the avalanche situation. Above the treeline, moderate avalanche danger continues to prevail. Avalanche prone locations are found near to and distant from ridgelines, at entries to gullies and bowls, and in general **behind protruberances**, mainly in E-S aspects. Triggering a small-to-medium slab avalanches is possible by large additional loading, in isolated cases also by minimum additional loading.

Snowpack structure

The snowpack fundament is by and large stable. Potential weak layers are in the faceted crystals, blanketed-over surface hoar and in transitions to the old snowpack. Snowdrifts in these layers are covered over.

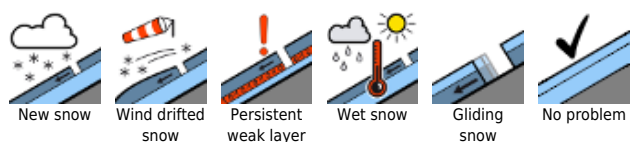
Weather

Intermittently sunny in the Gurktal and Seetals Alps, as well as on the Koralpe. Winds will be strong from the north. At 2000 m: -10 degrees.

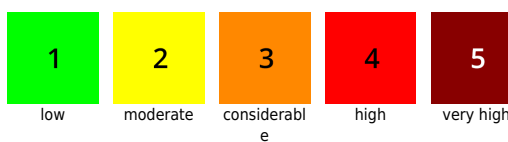
Outlook

No significant change in avalanche danger is expected.

Avalanche problems



Danger ratings

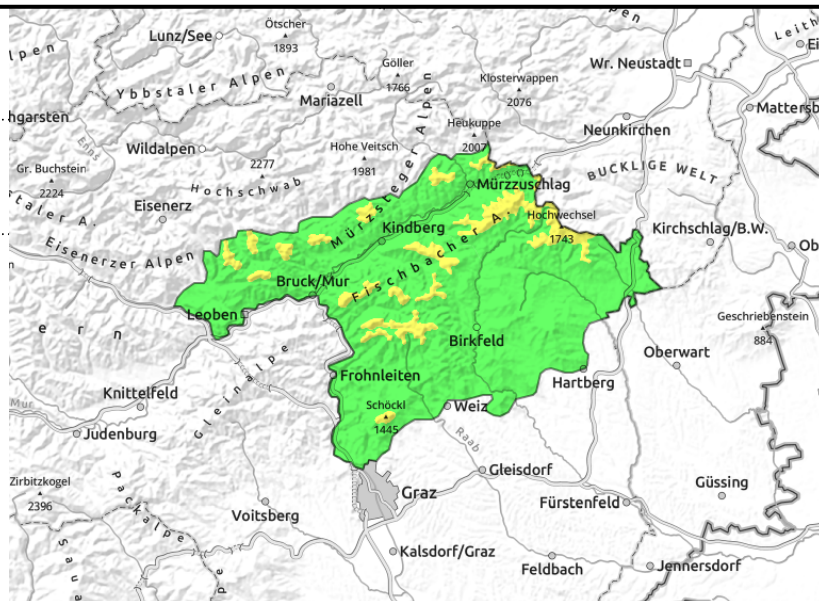
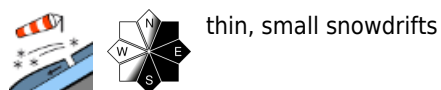


Expositions



23.03.2021

Östliche Fischbacher Alpen und Wechselgebiet, Mürztaler Alpen, Westliche Fischbacher Alpen und Grazer Bergland



Isolated danger zones above the treeline due to fresh snowdrift patches

Above the treeline, moderate avalanche danger prevails. Winds on Monday did their work on the snowpack. In isolated cases, fresh snowdrift patches can trigger slab avalanches. Avalanche prone locations are found near to ridgelines and behind protruberances, mainly in E-S aspects.

Snowpack structure

Snow showers on Sunday and Monday generated fresh snow and new snowdrift accumulations. They lie deposited atop a hard old snowpack or a soft layer of surface hoar. Bonding of these layers is inadequate. The snowpack funament is by and large stable.

Weather

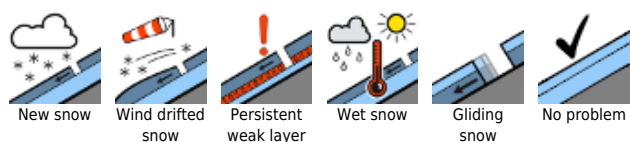
On Tuesday, intermittent sunshine and dry weather are expected. Wind will be from the northwest at 50-70 km/hr. At 2000 m: -10 degrees.

On Wednesday, temperatures will rise.

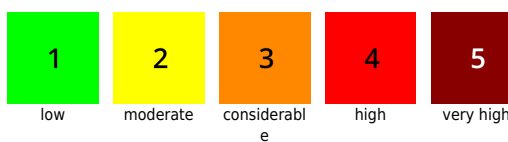
Outlook

No significant change in avalanche danger is expected.

Avalanche problems



Danger ratings



Expositions

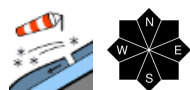


23.03.2021

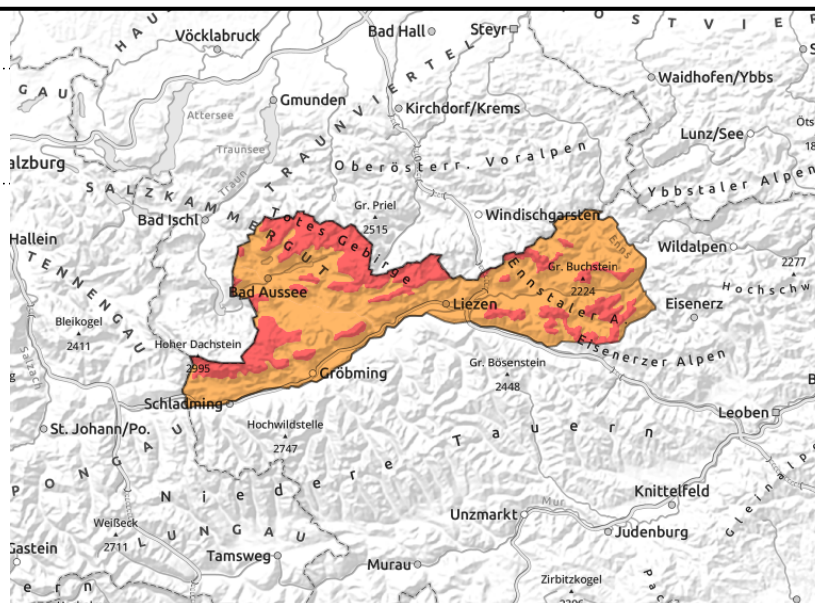
Dachsteingebiet, Totes Gebirge, Ennstaler Alpen



timberline



very easily triggerable



Lots of snowdrifts. Strong winds. Instable snowpack.

Avalanche danger above the treeline is high. Avalanche prone locations are found both near to and distant from ridgelines, at entries to gullies and bowls, and in general **behind protruberances**, in all aspects. Triggering a slab avalanche is possible even by the weight of one single skier. Naturally triggered and loosely-packed avalanches continue to be possible. Cornices are still growing, they are instable and can break at any time.

Snowpack structure

There has been 30-40 cm of fresh snow registered over the last 24 hours. Due to strong winds, fresh drifts were deposited atop a soft layer. The cold, brittle snowdrifts are poorly bonded to the other layers. Snow distribution is highly varied. In leeward terrain there are huge and widespread snowdrifts, they should not be underestimated.

Weather

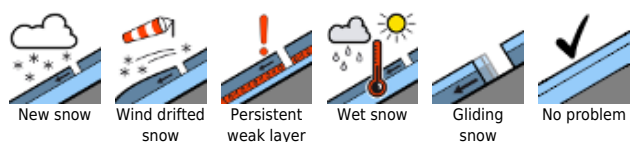
From Dachstein to the Rax, accumulated cloud in the northern barrier cloud regions will dominate, the summits will initially be shrouded in fog. The snow showers will slackend off during the day. It will remain cold. At 2000 m: -10 degrees. Winds will be strong from the northwest.

Outlook

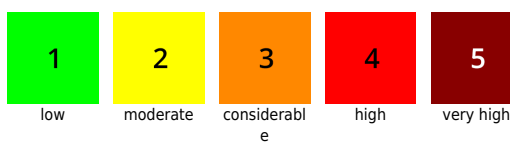
On Wednesday it will be sunny. The avalanche situation is expected to improve slightly.

Translated by Jeffrey McCabe, www.creativtrans.com

Avalanche problems



Danger ratings



Expositions

