
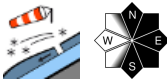

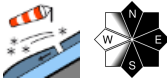

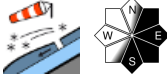

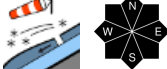


Treacherous avalanche situation for backcountry skiers. Conderable danger in northern barrier cloud regions.

	Schladminger Tauern, Eisenerzer Alpen, Nördliche Wölzer Tauern, Südliche Wölzer Tauern, Rottenmanner Tauern, Hochschwabgebiet, Mürztal, Seckauer Tauern	
	Gurktaler Alpen, Seetaler Alpen, Stub- und Gleinalpe, Koralpe	
	Östliche Fischbacher Alpen und Wechselgebiet, Mürztal, Westliche Fischbacher Alpen und Grazer Bergland	
	Dachsteingebiet, Totes Gebirge, Ennstaler Alpen	

Avalanche problems



Danger ratings



Expositions

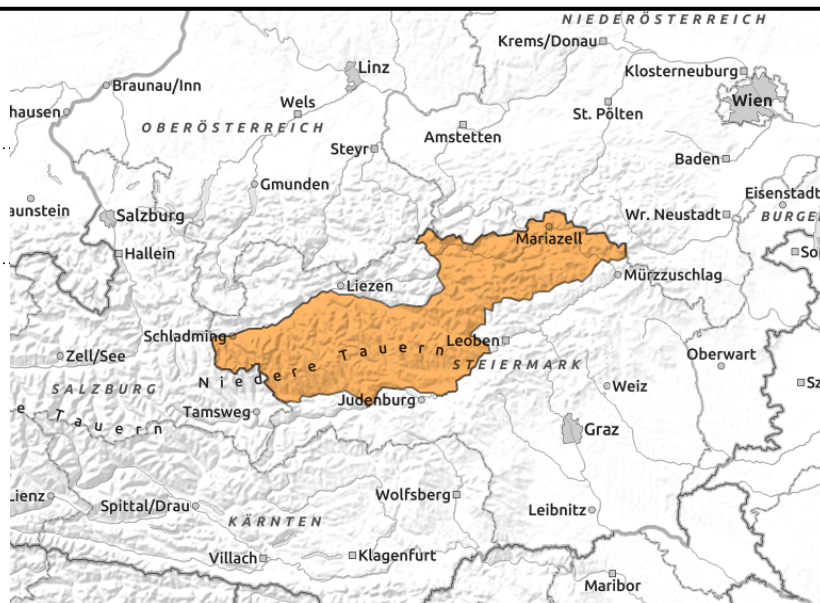


22.03.2021

Schladminger Tauern, Eisenerzer Alpen, Nördliche Wölzer Tauern, Südliche Wölzer Tauern, Rottenmanner Tauern, Hochschwabgebiet, Mürzsteiger Alpen, Seckauer Tauern



above treeline



Lots of snowdrifts. Storm winds.

Avalanche danger from the Niedere Tauern to Eisenerz Alps to the Rax is considerable. Avalanche prone locations are found both near to and distant from ridgelines, at entries to gullies and bowls, and in general **behind protruberances**, mainly in N-E-S aspects. Triggering a slab avalanche is possible even by the weight of one single skier. Also, naturally triggered slab avalanches and loose-snow avalanches are possible. Caution urged towards fresh cornices: they are instable!

Snowpack structure

Due to strong winds fresh snowdrifts are being deposited atop soft layers of fresh snow. Thus, 2 weak layers exist in the snowpack: soft fresh snow from Saturday and hard old snowpack surfaces. The cold fresh snow and snowdrifts are bonding poorly to the hardened layers beneath them. Snowdrift depths are increasing due to storm strength winds, they should not be underestimated in leeward terrain.

Weather

On Monday, most of the peaks will be shrouded in fog, some light-to moderate snowfall is expected and storm-strength northerly winds will be blowing. At 2000 m: -19 degrees. On Tuesday, weather conditions will improve at least in the southern Niedere Tauern regions.

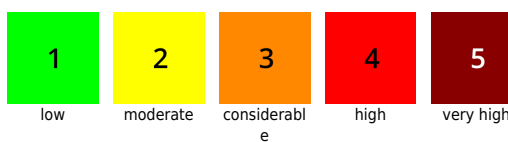
Outlook

Danger of slab avalanches remains upright.

Avalanche problems



Danger ratings

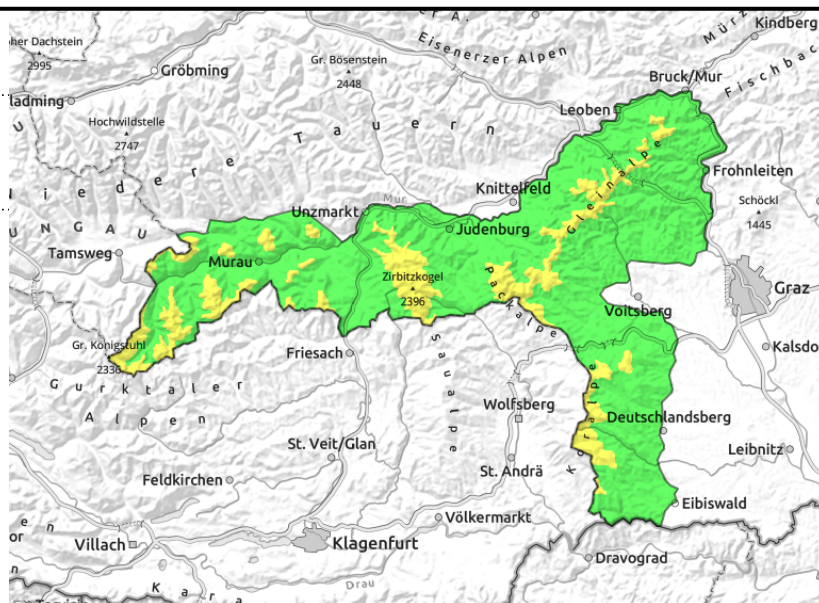
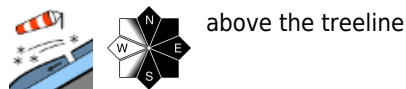


Expositions



22.03.2021

Gurktaler Alpen, Seetaler Alpen, Stub- und Gleinalpe, Koralpe



Lots of snowdrifts. Storm winds.

There is no essential change in the avalanche situation. Above the treeline, moderate avalanche danger continues to prevail. Avalanche prone locations are found both near to and distant from ridgelines, at entries to gullies and bowls, and in general **behind protruberances**, mainly in N-E-S aspects. Triggering a slab avalanche is possible even by the weight of one single skier. Also, naturally triggered slab avalanches and loose-snow avalanches are possible

Snowpack structure

The snowpack fundament is by and large stable. Potential weak layers are in the faceted crystals, blanketed-over surface hoar and in transitions to the old snowpack. Snowdrifts in these layers are covered over.

Weather

Intermittently sunny in the Gurktal and Seetal Alps, and on the Koralpe. Winds will be strong from northerly directions. At 2000 m: -10 degrees.

Outlook

No significant change in avalanche danger is expected.

Avalanche problems



Danger ratings



Expositions



22.03.2021

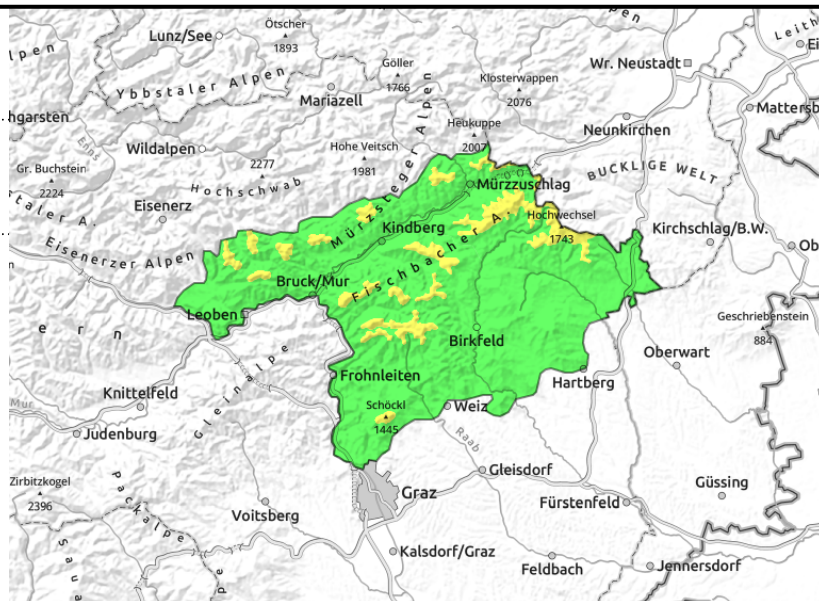
Östliche Fischbacher Alpen und Wechselgebiet, Mürztaler Alpen, Westliche Fischbacher Alpen und Grazer Bergland



forestline



thin, small snowdrifts



Isolated danger zones above the treeline due to fresh snowdrift patches

Above the treeline, moderate avalanche danger prevails. In isolated cases, fresh snowdrift patches can trigger slab avalanches. Avalanche prone locations are found near to ridgelines and behind protruberances, mainly in E-S aspects.

Snowpack structure

On Saturday, snow showers brought some fresh snow, generated some fresh drifts. They were deposited atop a hard old snowpack surface or atop soft layers with surface hoar. Bonding of these layers is for the most part melt-freeze encrusted and stable.

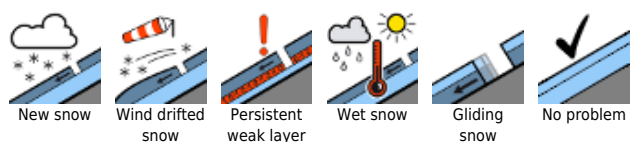
Weather

On Monday, intermittently sunny and generally dry. Winds will be northwesterly blowing at 50-70 km/hr. Temperature at 2000 m: -10 degrees.

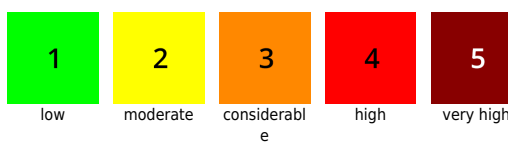
Outlook

No significant change in avalanche danger is expected.

Avalanche problems



Danger ratings

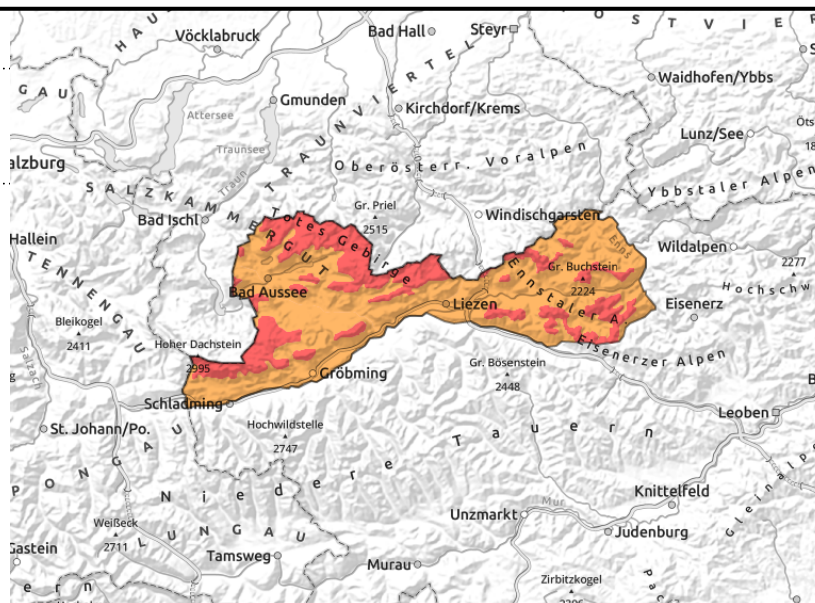
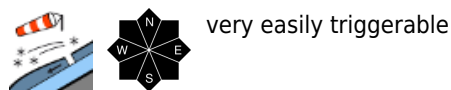


Expositions



22.03.2021

Dachsteingebiet, Totes Gebirge, Ennstaler Alpen



Lots of snowdrifts. Strong winds. Instable snowpack.

Avalanche danger above the treeline is high. Fresh snow and storm winds have increased avalanche danger levels. Due to strong winds, fresh cold snow is being transported. Avalanche prone locations are found both near to and distant from ridgelines, at entries to gullies and bowls, and in general behind protruberances, mainly in N-E-S aspects. Triggering a slab avalanche is possible even by the weight of one single skier. Naturally triggered and loosely-packed avalanches continue to be possible. Cornices are still growing, they are instable and can break at any time.

Snowpack structure

Due to strong winds on Sunday night and during the day on Monday. fresh snowdrifts will be deposited atop soft layers of snow. The cold, brittle drifts are poorly bonded to the layers beneath them. Snow distribution is highly varied. In leeward terrain there are huge snowdrifts which should not be underestimated. Fracture depths have been 100 cm.

Weather

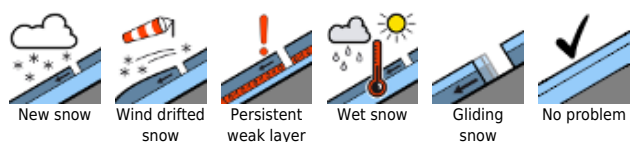
On Sunday night: snowfall between Dachstein and Ennstal Alps. On Monday, most peaks will be shrouded in fog right from the start, snowfall and storm-strength northerly winds are expected. Up to 20-30 cm of fresh snow is expected. It will remain cold. At 2000 m: -10 degrees.

Outlook

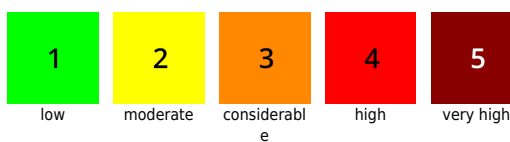
From Dachstein to Rax, clouds will dominate in the northern barrier cloud regions on Tuesday, the peaks will initially be shrouded in fog. Snow showers will slacken off during the course of the day. High avalanche danger remains upright.

Translated by Jeffrey McCabe, www.creativtrans.com

Avalanche problems



Danger ratings



Expositions

