
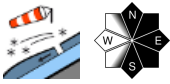

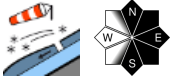

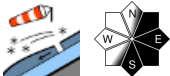


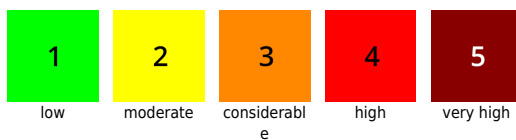
Treacherous avalanche situation for backcountry skiers. Conderable danger in northern barrier cloud regions.

	<p>Totes Gebirge, Dachsteingebiet, Schladminger Tauern, Ennstaler Alpen, Eisenerzer Alpen, Nördliche Wölzer Tauern, Südliche Wölzer Tauern, Rottenmanner Tauern, Hochschwabgebiet, Mürztsteger Alpen, Seckauer Tauern</p>	
	<p>forestline Gurktaler Alpen, Seetaler Alpen, Stub- und Gleinalpe, Koralpe</p>	
	<p>forestline Östliche Fischbacher Alpen und Wechselgebiet, Mürztaler Alpen, Westliche Fischbacher Alpen und Grazer Bergland</p>	

Avalanche problems



Danger ratings



Expositions

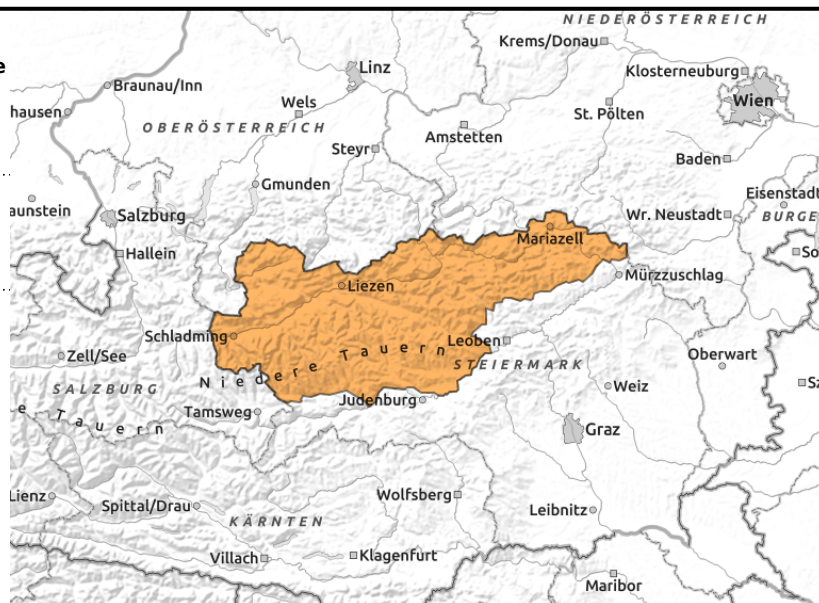


21.03.2021

Totes Gebirge, Dachsteingebiet, Schladminger Tauern, Ennstaler Alpen, Eisenerzer Alpen, Nördliche Wölzer Tauern, Südliche Wölzer Tauern, Rottenmanner Tauern, Hochschwabgebiet, Mürzsteiger Alpen, Seckauer Tauern



above treeline



Lots of snowdrifts. Caution on steep slopes.

Avalanche danger from the Dachstein over Niedere Tauern to the Rax is considerable. Due to strong winds, fresh cold snow is being transported. Avalanche prone locations are found both near to and distant from ridgelines, at entries to gullies and bowls, and in general **behind protruberances**, mainly in N-E-S aspects. Triggering a slab avalanche is possible even by the weight of one single skier. Also, naturally triggered slab avalanches and loose-snow avalanches are possible. Caution urged towards fresh cornices: they are instable!

Snowpack structure

Due to strong winds, new snowdrifts are being deposited atop a soft layer of fresh fallen snow. Thus, at least 2 weak layers exist in the snowpack: soft fresh snow from Saturday; and the hard old snowpack surface. The cold fresh snow and drifts are poorly bonded to the hardened layer beneath them. Snow distribution is highly varied. In leeward terrain there are many snowdrifts which should not be underestimated. Since last Sunday in the Northern Alps there has been more than 250 cm of fresh snow deposited, somewhat less in the Niedere Tauern and Hochschwab regions.

Weather

In Upper Styria the day will begin biting cold with cloudless skies, but cloud cover will rapidly move in from the northwest. Starting at midday the peaks of the Northern Alps and Niedere Tauern will become shrouded in fog and light snowfall will set in.

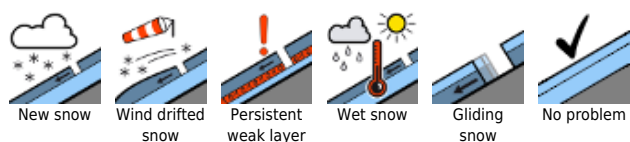
In the morning a light, in the afternoon a brisker NW wind will be blowing. At 2000 m: -11 degrees.

On Monday in northern Upper Styria, light snowfall, moderately strong at the start. Winds will intensify from moderate to brisk, becoming stormy in the mountains.

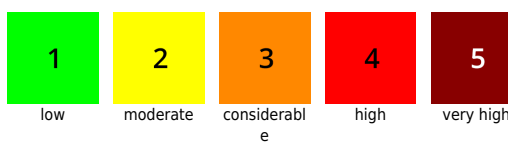
Outlook

Avalanche danger will increase somewhat on Monday.

Avalanche problems



Danger ratings

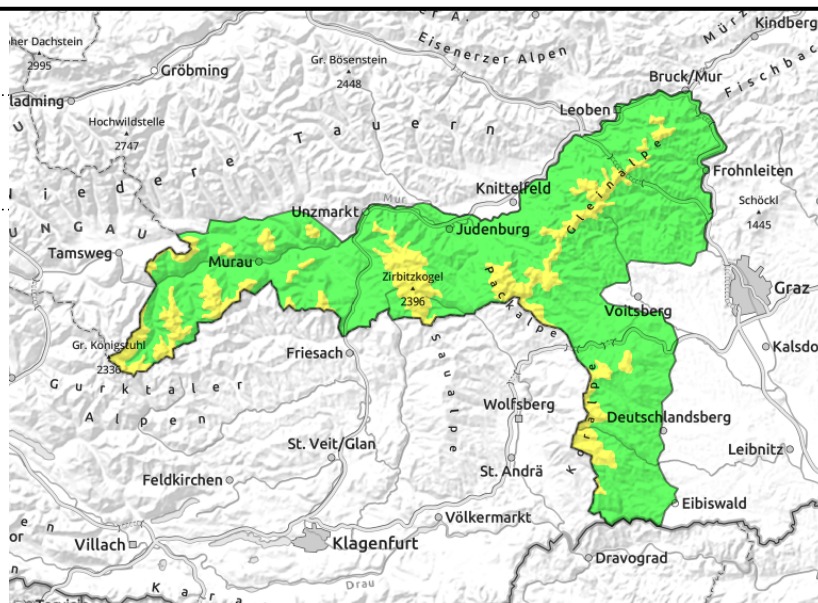
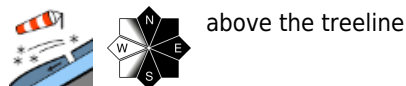


Expositions



21.03.2021

Gurktaler Alpen, Seetaler Alpen, Stub- und Gleinalpe, Koralpe



Strong winds bringing fresh snowdrifts

No significant change in the avalanche situation. Above the treeline, moderate avalanche danger continues to prevail. Avalanche prone locations are found near to and distant from ridgelines, at entries to gullies and bowls, and in general **behind protruberances**, mainly in N-E-S aspects. Triggering a small-to-medium slab avalanches is possible by large additional loading, in isolated cases also by minimum additional loading.

Snowpack structure

The snowpack fundament is by and large stable. Potential weak layers are in the faceted crystals, blanketed-over surface hoar and in transitions to the old snowpack. Snowdrifts in these layers are covered over.

Weather

Along the Gurktal and Seetal Alps, cloudless skies in the morning, gorgeous sunny weather. A light NW wind will be blowing in the morning, a bit stronger in the afternoon. Temperature at 2000 m: -11 degrees. NW winds at 20-50 km/hr.

Outlook

On Monday, predominantly sunny. Winds will intensify somewhat. No significant change in avalanche danger is expected.

Avalanche problems



Danger ratings



Expositions



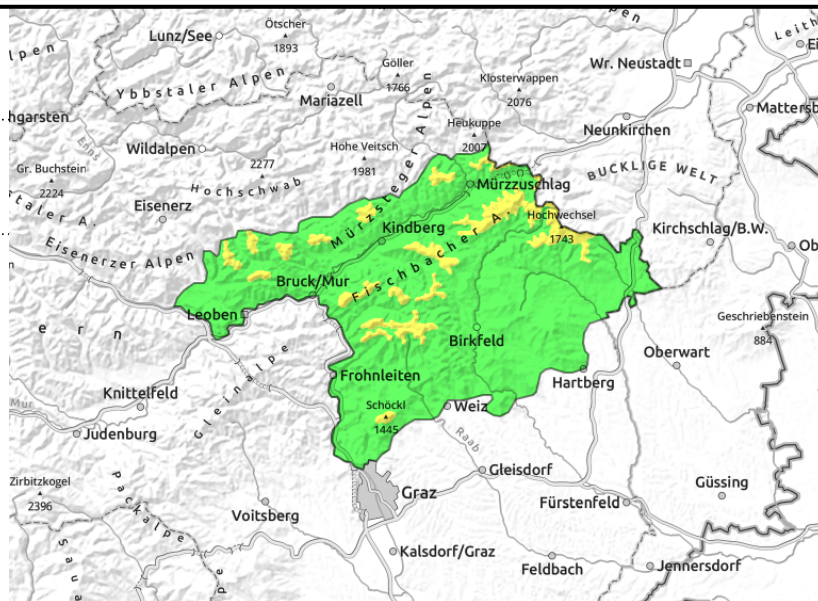
Östliche Fischbacher Alpen und Wechselgebiet, Mürztaler Alpen, Westliche Fischbacher Alpen und Grazer Bergland



forestline



thin, small snowdrifts



Isolated danger zones above the treeline due to fresh snowdrift patches

Above the treeline, moderate avalanche danger prevails. In isolated cases, fresh snowdrift patches can trigger slab avalanches. Avalanche prone locations are found near to ridgelines and behind protruberances, mainly in E-S aspects.

Snowpack structure

On Saturday, snow showers brought some fresh snow, generated some fresh drifts. They were deposited atop a hard old snowpack surface or atop soft layers with surface hoar. Bonding of these layers is for the most part melt-freeze encrusted and stable.

Weather

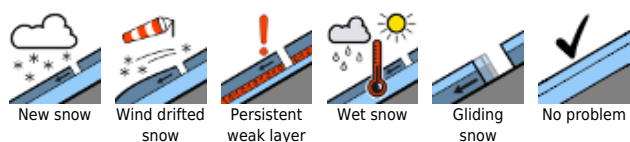
Along the rimline ranges, cloudless skies and superb sunny weather in the morning. On the southern flank of the Alps it will remain dry. A light NW wind will be blowing in the morning, brisker in the afternoon. At 1500 m: -7 degrees.

Outlook

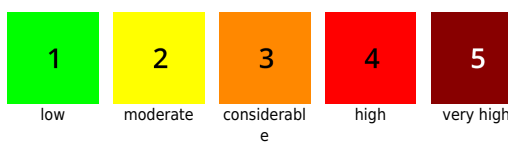
On Monday, predominantly sunny, but very windy. No significant change in avalanche danger is expected.

Translated by Jeffrey McCabe, www.creativtrans.com

Avalanche problems



Danger ratings



Expositions

