

Treacherous avalanche situation for backcountry skiers

	<p>forestline</p>	<p>Totes Gebirge, Dachsteingebiet, Schladminger Tauern, Ennstaler Alpen, Eisenerzer Alpen, Nördliche Wölzer Tauern, Südliche Wölzer Tauern, Rottenmanner Tauern, Hochschwabgebiet, Mürzsteger Alpen, Seckauer Tauern</p>		
	<p>forestline</p>	<p>Gurktaler Alpen, Seetaler Alpen, Stub- und Gleinalpe, Koralpe</p>		
	<p>forestline</p>	<p>Östliche Fischbacher Alpen und Wechselgebiet, Mürztaler Alpen, Westliche Fischbacher Alpen und Grazer Bergland</p>		

Avalanche problems



Danger ratings

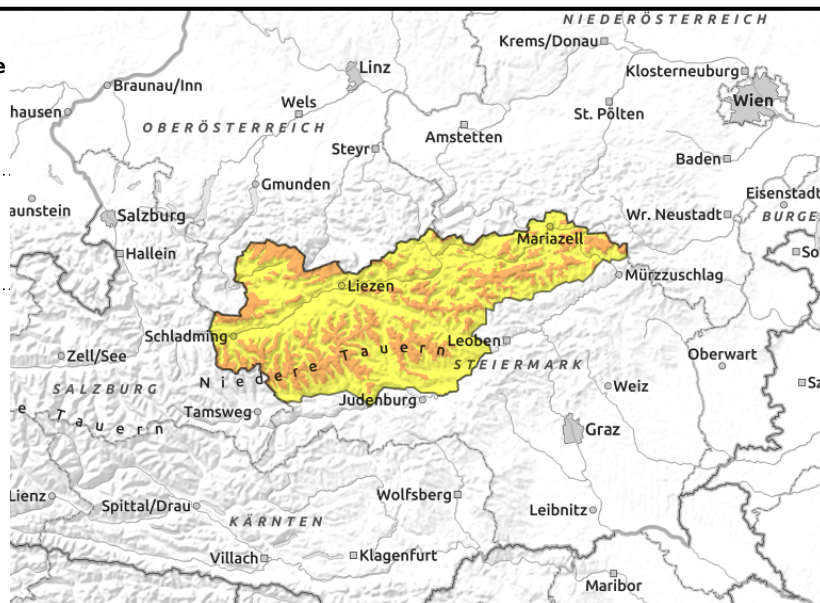


Expositions



20.03.2021

Totes Gebirge, Dachsteingebiet, Schladminger Tauern, Ennstaler Alpen, Eisenerzer Alpen, Nördliche Wölzer Tauern, Südliche Wölzer Tauern, Rottenmanner Tauern, Hochschwabgebiet, Mürzsteiger Alpen, Seckauer Tauern



Many snowdrifts. Caution above treeline.

Above the treeline, considerable danger prevails due to freshly-generated cold dry snowdrifts. Avalanche prone locations are found both near to and distant from ridgelines, at entries to gullies and bowls, and in general behind protruberances, mainly in N-E-S aspects. Triggering a slab avalanche is possible even by the weight of one single skier. Naturally triggered slab avalanches and loose-snow avalanches continue to be possible. Caution urged towards fresh cornices: they are unstable.

Snowpack structure

A few additional centimetres of snowfall have been added to the snowpack. The cold fresh snow / snowdrifts are poorly bonded to the snow layers beneath them. Snow distribution is highly varied. In leeward terrain there are huge snowdrift accumulations. Weak layers lie embedded inside the snowpack. At low altitudes the snowpack became moist on Wednesday.

Weather

Saturday will begin with lots of clouds, fog and some snowfall in the mountains. In the afternoon, snow showers in the western regions will recede. From the east, clouds will begin to disperse, sunshine will still be rare. It will remain wintery cold. At 2000 m: -12 degrees. Light NW winds will be blowing.

Sunday: in Upper Styria the day will begin with very low temperatures, cloudless skies. From the northwest, the next bout of clouds will soon move in. As of midday, the peaks will become shrouded in fog in the Northern Alps and Niedere Tauern, light snowfall will set in.

Outlook

The treacherous avalanche situation will persist over the weekend.

Avalanche problems



Danger ratings

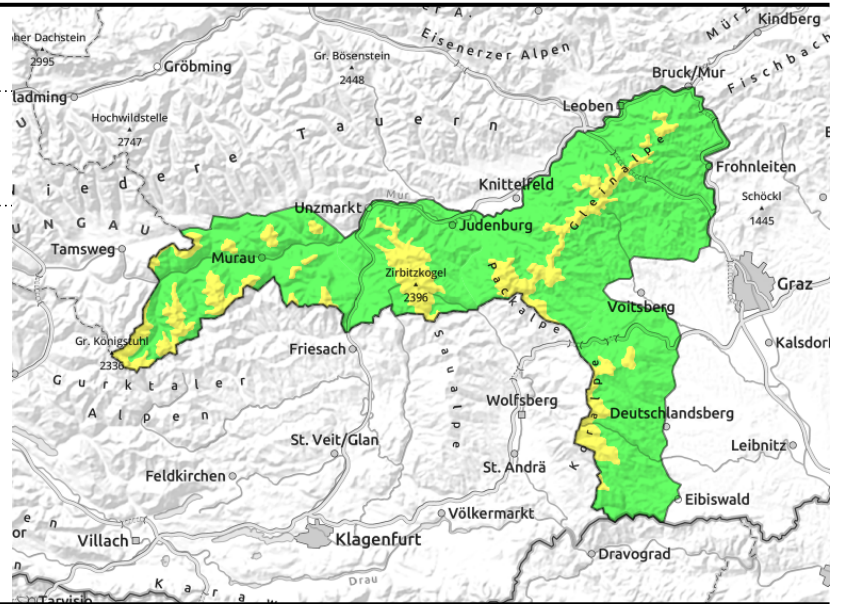
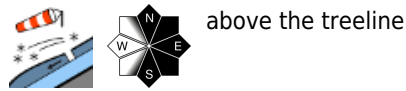


Expositions



20.03.2021

Gurktaler Alpen, Seetaler Alpen, Stub- und Gleinalpe, Koralpe



Strong winds = fresh snowdrifts

Above the treeline, considerable danger prevails due to freshly-generated cold dry snowdrifts. Avalanche prone locations are found both near to and distant from ridgelines, at entries to gullies and bowls, and in general behind protruberances, mainly in N-E-S aspects. Triggering a slab avalanche is possible by large additional loading, in isolated cases even by the weight of one single skier.

Snowpack structure

The snowpack fundament is largely stable, potential weak layers lurk in layers of faceted crystals, blanketed-over surface hoar and in transitions to the old snowpack. Snowdrifts have blanketed over these layers.

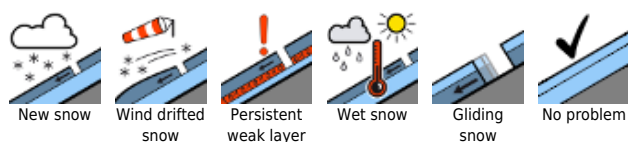
Weather

Saturday will begin with lots of clouds, fog and some snowfall in the mountains. In the afternoon, snow showers in the western regions will recede. From the east, clouds will begin to disperse,

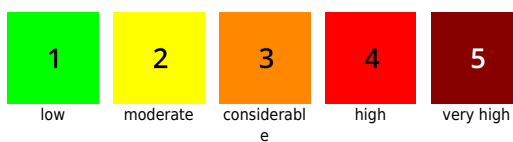
Outlook

Sunday will remain dry, some sunshine can be expected. No significant change in avalanche danger is expected.

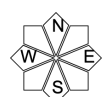
Avalanche problems



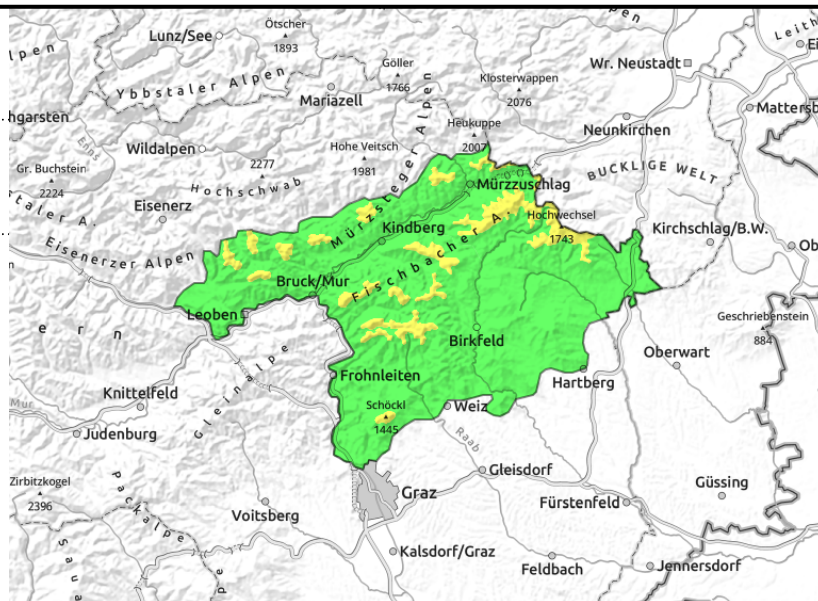
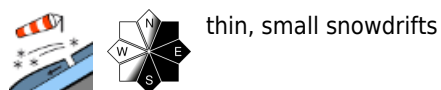
Danger ratings



Expositions



Östliche Fischbacher Alpen und Wechselgebiet, Mürztaler Alpen, Westliche Fischbacher Alpen und Grazer Bergland



Isolated danger zones above the treeline due to fresh snowdrift patches

Above the treeline, moderate avalanche danger prevails. In isolated cases, fresh snowdrift patches can trigger slab avalanches. Avalanche prone locations are found near to ridgelines and behind protruberances, mainly in E-S aspects.

Snowpack structure

Fresh snowdrifts have been deposited mostly atop hardened old snowpack surfaces or atop a soft layer of surface hoar. Bonding of these layers is not adequate. The snowpack fundament is by and large melt-freeze encrusted and stable.

Weather

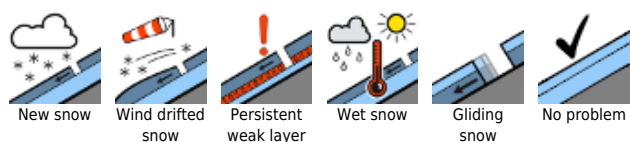
Saturday will begin with lots of clouds and fog, some snowfall in the mountains. From the east the clouds will begin to disperse. Sunshine will be rare. It will remain wintery cold. At 1500 m: -8 degrees. Moderate NE winds.

Outlook

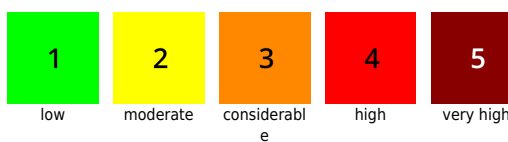
Sunday will remain dry, some sunshine can be expected. No significant change in avalanche danger is expected.

Translated by Jeffrey McCabe, www.creativtrans.com

Avalanche problems



Danger ratings



Expositions

