








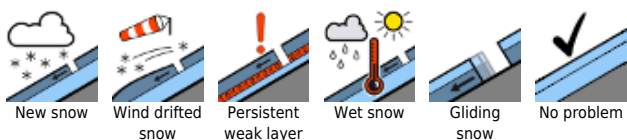


## Treacherous avalanche situation for backcountry skiers

	<p>forestline</p>	<p>Totes Gebirge, Dachsteingebiet, Schladminger Tauern, Ennstaler Alpen, Eisenerzer Alpen, Nördliche Wölzer Tauern, Südliche Wölzer Tauern, Rottenmanner Tauern, Hochschwabgebiet, Mürzsteger Alpen, Seckauer Tauern</p>		
	<p>forestline</p>	<p>Gurktaler Alpen, Seetaler Alpen, Stub- und Gleinalpe, Koralpe</p>		
	<p>forestline</p>	<p>Östliche Fischbacher Alpen und Wechselgebiet, Mürztaler Alpen, Westliche Fischbacher Alpen und Grazer Bergland</p>		

### Avalanche problems



### Danger ratings

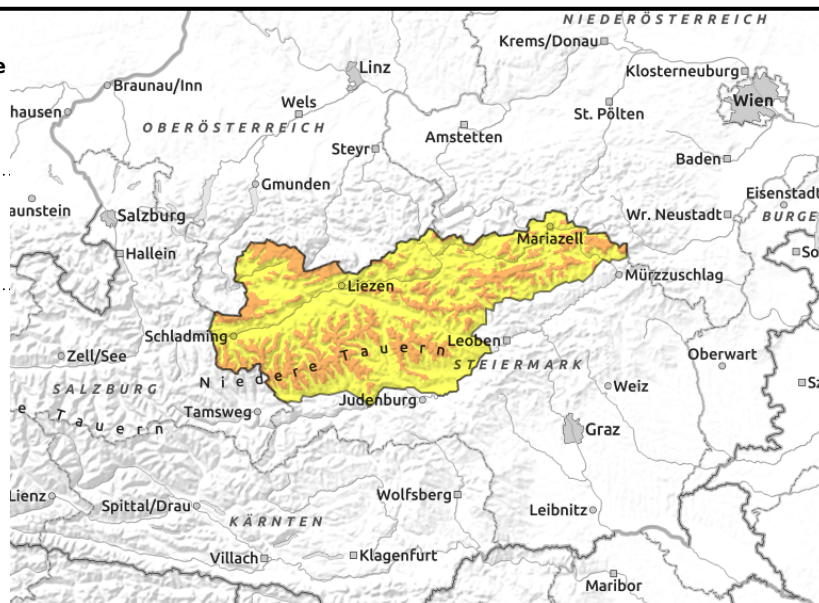


### Expositions



**19.03.2021**

**Totes Gebirge, Dachsteingebiet, Schladminger Tauern, Ennstaler Alpen, Eisenerzer Alpen, Nördliche Wölzer Tauern, Südliche Wölzer Tauern, Rottenmanner Tauern, Hochschwabgebiet, Mürzsteiger Alpen, Seckauer Tauern**



## Naturally triggered avalanches possible

Above the treeline considerable avalanche danger continues to prevail due to freshly generated snowdrifts. Danger zones are found both near to and distant from ridgelines, at entries to gullies and bowls and in general behind protruberances in the landscape. This applies mainly to N-E-S aspects. Triggering a slab avalanche is possible even by the weight of one single skier. Naturally triggered slab and loose-snow avalanches continue to be possible. The runout zones tend to be shorter due to the wintery conditions in northern barrier cloud regions. At low altitudes, small moist loose-snow avalanches are possible. Caution urged towards freshly generated cornices: instable!

### Snowpack structure

Temperatures on Thursday rose, the snowpack was able to settle somewhat. Cold snowdrifts still have too little bonding to the snowpack layer beneath them, weak layers lie embedded inside the snowpack. The fundament is largely stable, potential weak layers of faceted crystals or depth hoar are generally blanketed-over by thick crusts. At low altitudes the snow was moist on Wednesday.

### Weather

Friday will bring us cold late-winter weather. Peaks on the northern flank of the Alps will mostly be shrouded in fog. In the afternoon snow showers can be expected, often intensive. Winds will be blowing at moderate strength from the northwest. At 2000 m: cold, -9 degrees.

### Outlook

Saturday will begin with lots of cloud and fog, a bit of snowfall. Sunshine is not expected, except minimally. It will be cold: -13 degrees at 2000 m.

The treacherous avalanche situation in outlying terrain will persist over the weekend.

#### Avalanche problems



#### Danger ratings

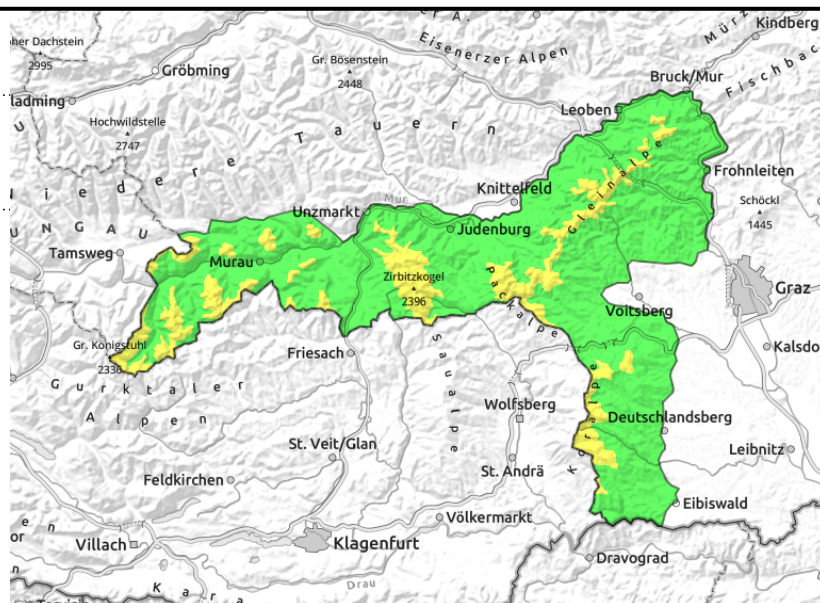


#### Expositions



**19.03.2021**

**Gurktaler Alpen, Seetaler Alpen, Stub- und Gleinalpe, Koralpe**



**Strong winds = fresh snowdrifts**

Above the treeline, considerable avalanche danger continues to prevail due to freshly generated snowdrifts. Danger zones are found both near to and distant from ridgelines, at entries to gullies and bowls, and in general behind protruberances in the landscape. This applies mainly to N-E-S aspects. Triggering a slab avalanche is possible even by the weight of one single skier. Naturally triggered slab and loose-snow avalanches continue to be possible.

**Snowpack structure**

The fundament is largely stable, potential weak layers of faceted crystals or depth hoar are generally blanketed-over by thick crusts.

**Weather**

Some sunshine is expected on the southern flank of the Alps, and along the Koralpe. As of midday, clouds and fog can be expected alongside more frequent snow showers. Winds: weak-to-moderate from north to east. Highest temperature at 2000 m: -9 degrees.

**Outlook**

No significant change in avalanche danger is expected.

**Avalanche problems**



**Danger ratings**

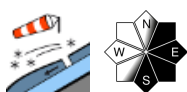


**Expositions**

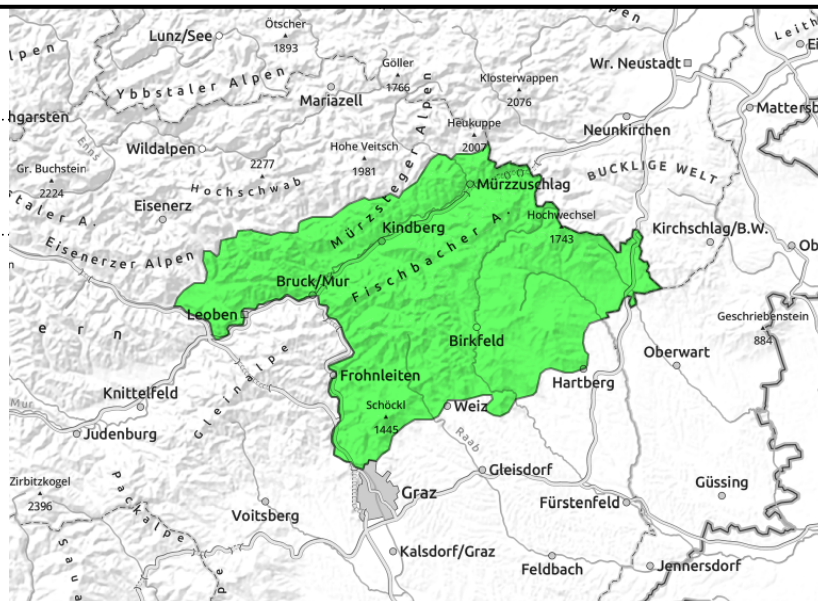


**19.03.2021**

**Östliche Fischbacher Alpen und Wechselgebiet, Mürztaler Alpen, Westliche Fischbacher Alpen und Grazer Bergland**



thin, small snowdrifts



**Low avalanche danger in general, but isolated danger zones due to fresh snowdrifts**

Low avalanche danger prevails. In isolated cases, fresh snowdrifts can trigger small slab avalanches. Small avalanche prone locations are found near to ridgelines and behind protruberances, mostly in E-S aspects.

**Snowpack structure**

The snowpack fundament is by and large melt-freeze encrusted and stable. Atop that since Sunday, some fresh snow and small snowdrift patches have formed through stormy NW winds, these are poorly bonded with the base at high altitudes.

**Weather**

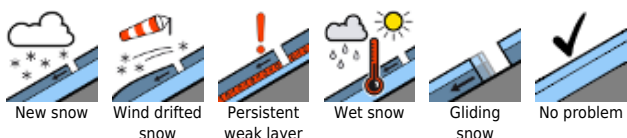
Some sunshine is expected on the southern flank of the Alps, and along the Koralpe. As of midday, clouds and fog will increase and, subsequently, snow showers can be expected. Winds will be light to moderate from north to east. Temperature at 2000 m: -9 degrees.

**Outlook**

Saturday will begin with lots of clouds and fog, a bit of snowfall. Subsequently, some peaks will become free, the snow showers will slacken off. Avalanche danger levels are not expected to change significantly.

Translated by Jeffrey McCabe, [www.creativtrans.com](http://www.creativtrans.com)

**Avalanche problems**



**Danger ratings**



**Expositions**

