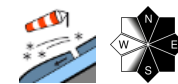


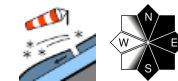
Mostly low danger, moderate danger in some high altitude regions



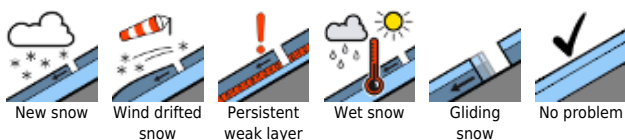
Totes Gebirge, Dachsteingebiet



Gurktaler Alpen, Seetaler Alpen, Stub- und Gleinalpe, Westliche Fischbacher Alpen und Grazer Bergland, Östliche Fischbacher Alpen und Wechselgebiet, Mürtztaler Alpen, Koralpe, Hochschwabgebiet, Mürtzsteiger Alpen, Schladminger Tauern, Nördliche Wölzer Tauern, Rottenmanner Alpen, Ennstaler Alpen, Seckauer Tauern, Südliche Wölzer Tauern, Eisenerzer Alpen



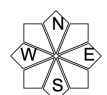
Avalanche problems



Danger ratings

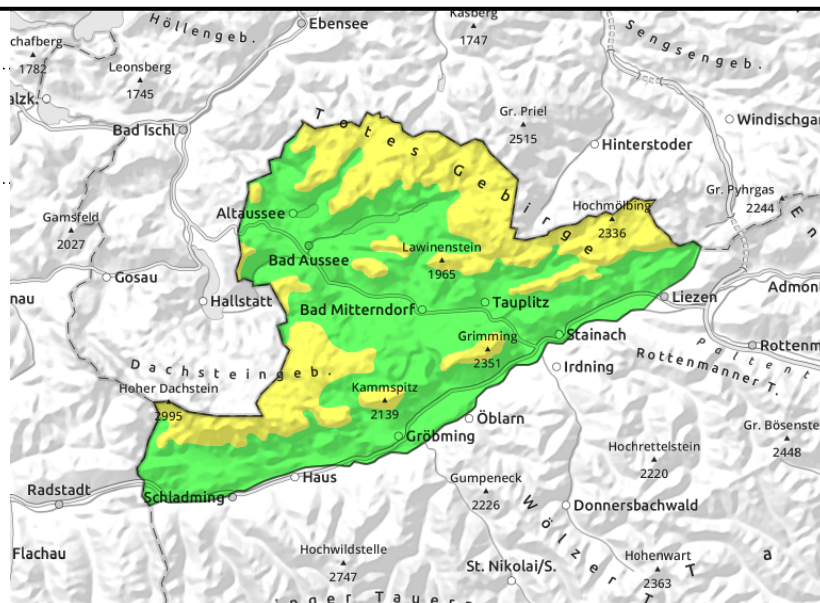
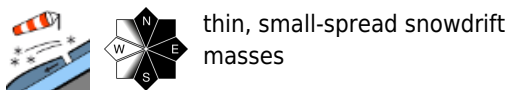


Expositions



10.03.2021

Totes Gebirge, Dachsteingebiet



Moderate avalanche danger in some high-altitude spots due to fresh drifts

At altitudes above 2000 avalanche danger is moderate due to freshly-generated snowdrifts. Particularly in N-E-S aspects, small snowdrifts can be triggered as slab avalanches, e.g. behind protruberances, in gullies, ridgeline terrain. Risks of falling continue as a result of hard, icy surfaces.

Snowpack structure

The snowpack fundament is stable for the most part, possible weak layers of faceted crystals are generally well blanketed-over by thick crusts. At high altitudes on shady slopes there is still loosely-packed snow. On Wednesday, up to 15 cm of fresh snow will be deposited amid wind influence and generate new snowdrift accumulations which will often be poorly bonded with the snow base. Blanketed-over surface hoar also constitutes a weak layer. On sunny slopes, the ground is already bare up to high altitudes.

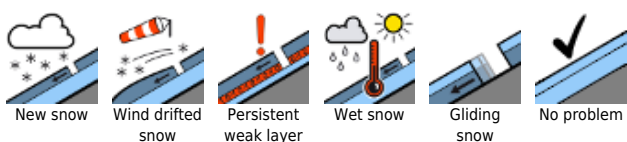
Weather

On Wednesday, heavy cloud cover will move into the Upper Styrian barrier cloud regions, snow showers are anticipated. Winds will be brisk from the northwest. Temperature at 2000 m will be -8 degrees.

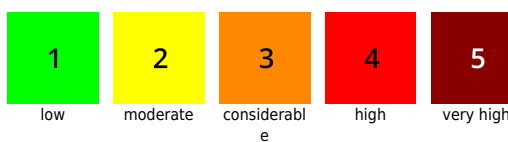
Outlook

On Thursday, gloomy skies await us, temperatures will briefly rise. Avalanche danger will remain low for the most part.

Avalanche problems



Danger ratings

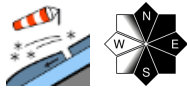


Expositions



10.03.2021

Gurktaler Alpen, Seetaler Alpen, Stub- und Gleinalpe, Westliche Fischbacher Alpen und Grazer Bergland, Östliche Fischbacher Alpen und Wechselgebiet, Mürztaler Alpen, Korralpe, Hochschwabgebiet, Mürzsteger Alpen, Schladminger Tauern, Nördliche Wölzer Tauern, Rottenmanner Tauern, Ennstaler Alpen, Seckauer Tauern, Südliche Wölzer Tauern, Eisenerzer Alpen



thin, small-spread snowdrifts

Low avalanche danger, isolated avalanche prone locations due to snowdrifts

Avalanche danger is generally low, in isolated places small slab avalanches can be triggered by the snowdrift patches, e.g. behind protruberances, in gullies, near ridgelines. Danger zones are found mostly in N-E-S aspects. Risks of falling continue as a result of the hardened, icy surfaces.

Snowpack structure

The snowpack fundament is stable for the most part, possible weak layers of faceted crystals are generally well blanketed-over by thick crusts. At high altitudes on shady slopes there is still loosely-packed snow. On Wednesday, up to 15 cm of fresh snow will be deposited amid wind influence and generate new snowdrift accumulations which will often be poorly bonded with the snow base. Blanketed-over surface hoar also constitutes a weak layer. On sunny slopes, the ground is already bare up to high altitudes.

Weather

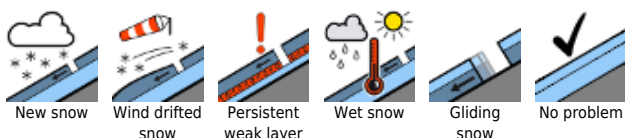
On Wednesday, heavy cloud cover will move into the Upper Styrian barrier cloud regions, snow showers are anticipated. Winds will be brisk from the northwest. Temperature at 2000 m will be -8 degrees.

Outlook

On Thursday, gloomy skies await us, temperatures will briefly rise. Avalanche danger will remain low for the most part.

Translated by Jeffrey McCabe, www.creativtrans.com

Avalanche problems



Danger ratings



Expositions

