

Moderate avalanche danger at high altitudes in Northern Alps, northern rim of Schladming Tauern, due to older snowdrifts



1900 m

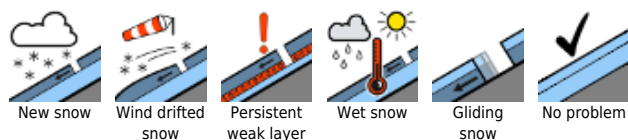
Totes Gebirge, Dachsteingebiet, Ennstaler Alpen, Hochschwabgebiet, Eisenerzer Alpen, Schladminger Tauern



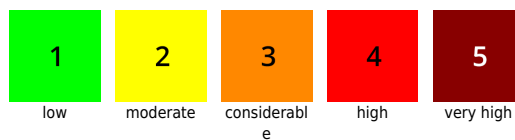
Gurktaler Alpen, Seetaler Alpen, Stub- und Gleinalpe, Westliche Fischbacher Alpen und Grazer Bergland, Östliche Fischbacher Alpen und Wechselgebiet, Mürtztaler Alpen, Koralmpe, Nördliche Wölzer Tauern, Rottenmanner Tauern, Südliche Wölzer Tauern, Seckauer Tauern, Mürtzsteger Alpen



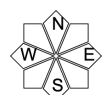
Avalanche problems



Danger ratings

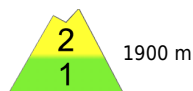


Expositions

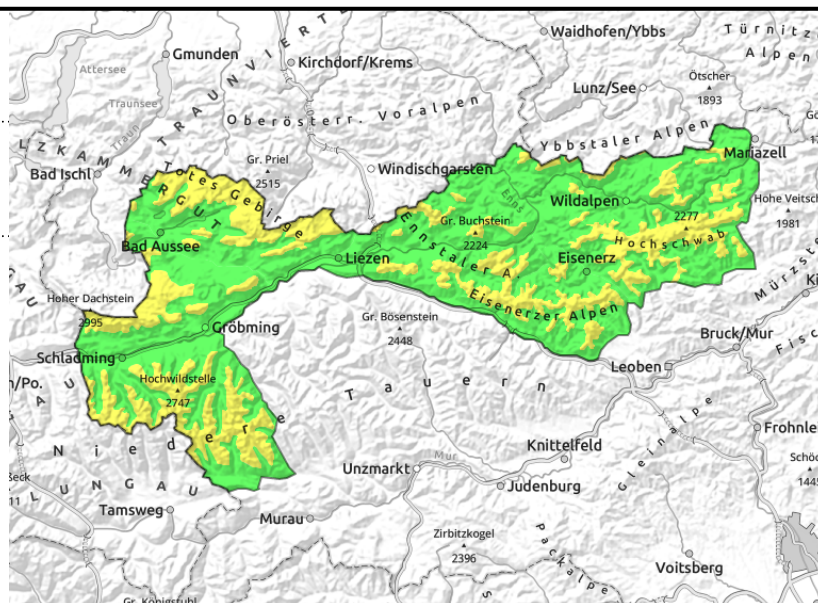


07.03.2021

Totes Gebirge, Dachsteingebiet, Ennstaler Alpen, Hochschwabgebiet, Eisenerzer Alpen, Schladminger Tauern



thin, small-spread snowdrifts atop unfavourable snow base, behind protruberances, near ridgelines, in gullies, steep bowls



Moderate avalanche danger at high altitudes

At altitudes above 1900 m moderate danger prevails, below that altitude danger is low. On Friday, fresh snowdrifts were generated on east and south-facing slopes more than anywhere else. Also in other aspects, fresh snowdrift patches were formed. As a result of solar radiation and daytime warming, avalanche prone locations are decreasing on sunny slopes, on shady slopes are limited to small areas, e.g. behind protruberances, in gullies or near ridgelines; due to evident signs of wind and good visibility, these are easily recognized. Risks of falling continue to outweigh those of avalanches, since the fresh snow is poorly bonded with the hard surface on which it was deposited and can easily slide away with loading.

Snowpack structure

The fresh snow from Friday (10-20 cm) was deposited atop a melt-freeze encrusted, hard old snowpack surface. Bonding of old with new snow is unfavourable, also the drifts generated by moderate winds are poorly bonded with the old snow. Potential weak layers are most likely to trigger in shady terrain in the blanketed-over powder. As a result of strong solar radiation, the fresh snow is settling well on sunny slopes.

Weather

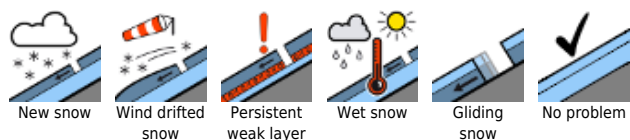
On Sunday, brilliantly sunny weather conditions will continue. The atmosphere is dry, visibility is good. The NW winds are light to start with, then will intensify in the afternoon. Temperatures at midday at 2000 m: -2 degrees; at 1500 m: +2 degrees. On the eastern rim of the Alps, temperatures are about 2 degrees lower.

On Sunday night, clouds will intensify, a bit of snowfall is possible in the western sector of the Northern Alps. During the course of the day on Monday, clouds will disperse. Temperatures will be noticeably lower than on Sunday. A brisk NW wind will be blowing.

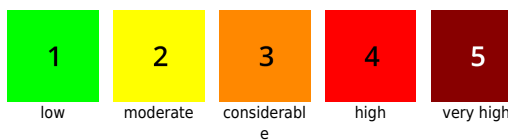
Outlook

Avalanche danger will decrease.

Avalanche problems



Danger ratings

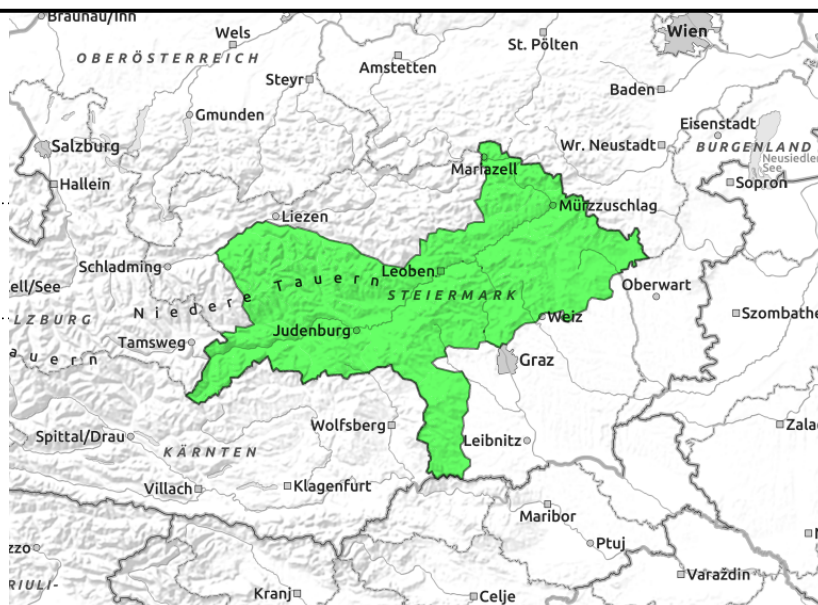


Expositions



07.03.2021

Gurktaler Alpen, Seetaler Alpen, Stub- und Gleinalpe, Westliche Fischbacher Alpen und Grazer Bergland, Östliche Fischbacher Alpen und Wechselgebiet, Mürztaler Alpen, Koralpe, Nördliche Wölzer Tauern, Rottenmanner Tauern, Südliche Wölzer Tauern, Seckauer Tauern, Mürzsteiger Alpen



few danger zones in outlying terrain, greatest risk: falling (outweighs avalanche danger)

Due to minor snowfall on Friday, low danger continues. Heed risks of falling!

Avalanche danger is low, avalanche prone locations are limited to isolated snowdrift patches which are deposited on shady slopes, particularly behind protruberances and near ridgelines. Where fresh snow fell on Friday, bonding to the old snow is quite poor. Dangers of falling and being swept along the hardened surfaces should not be underestimated, they outweigh those of being buried in snow.

Snowpack structure

On Friday in the northern mountain ranges, there was 5-10 cm of fresh snow registered, not enough for large-sized snowdrift accumulations. Thus, a thin layer lies atop a hard, melt-freeze encrusted old snowpack surface. Bonding between new and old snow is poor, the danger of slipping and falling in steep terrain is high. In the southern ranges, there was hardly any fresh snow, the melt-freeze encrusted surfaces continue to dominate the landscape.

Weather

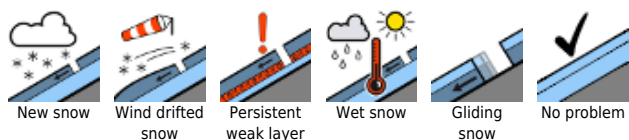
On Sunday, brilliant sunny weather will continue. The atmosphere is dry, visibility is good. The NW winds will be light. Temperatures at midday at 2000 m: -2 degrees; at 1500 m: +2 degrees. On Sunday night, clouds will become heavier. On Monday, clouds and sunshine will alternate in phases. Temperatures will be lower than on Sunday. A brisk NW wind will be blowing.

Outlook

No change in avalanche danger levels is expected.

Translated by Jeffrey McCabe, www.creativtrans.com

Avalanche problems



Danger ratings



Expositions

