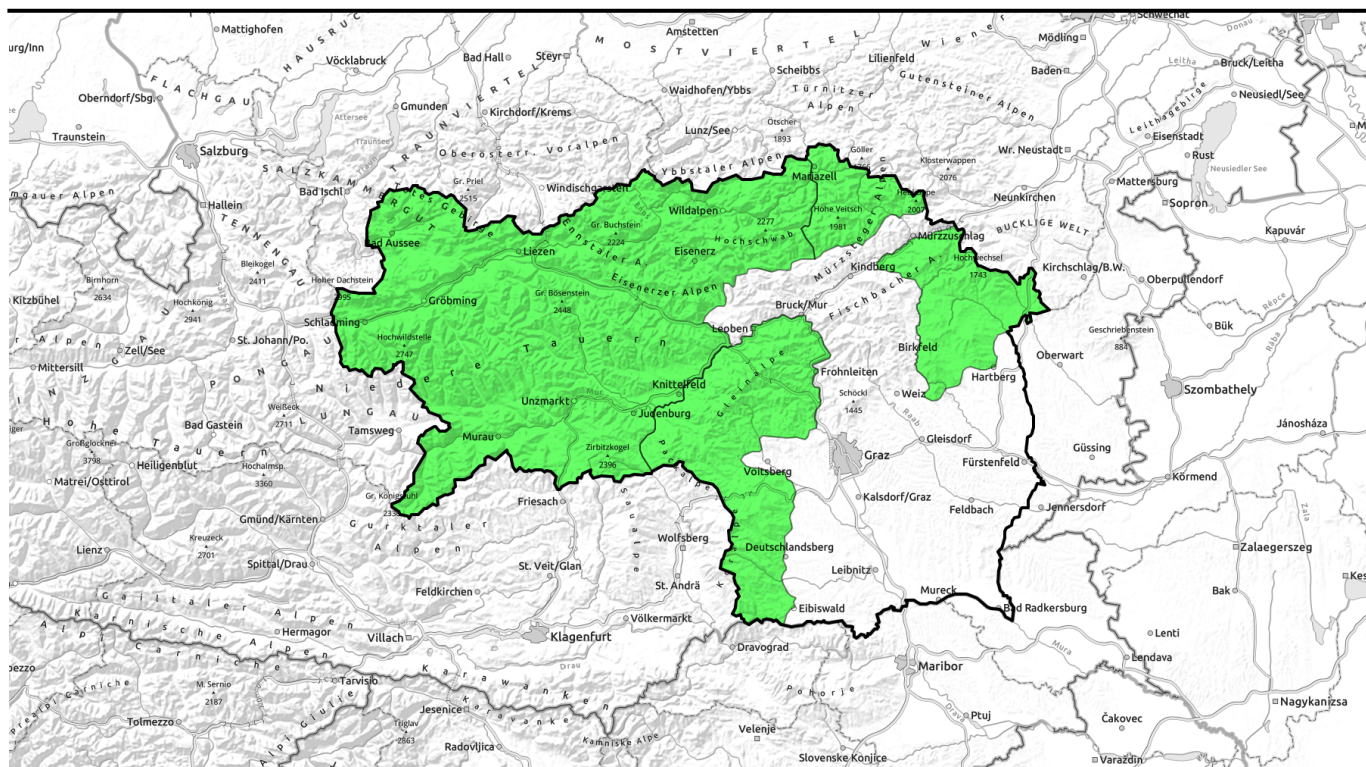


26.02.2021, morning



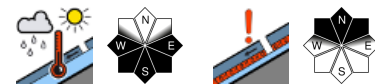
Springlike conditions. Caution urged towards wet-snow avalanches.



Stub- und Glanzalpe, Koralpe, Östliche Fischbacher Alpen und Wechselgebiet, Mürzsteiger Alpen



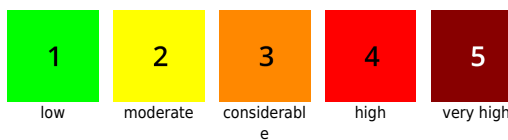
Dachsteingebiet, Totes Gebirge, Nördliche Wölzer Tauern, Schladminger Tauern, Südliche Wölzer Tauern, Gurktaler Alpen, Seetaler Alpen, Seckauer Tauern, Rottenmanner Tauern, Ennstaler Alpen, Hochschwabgebiet, Eisenerzer Alpen



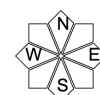
Avalanche problems



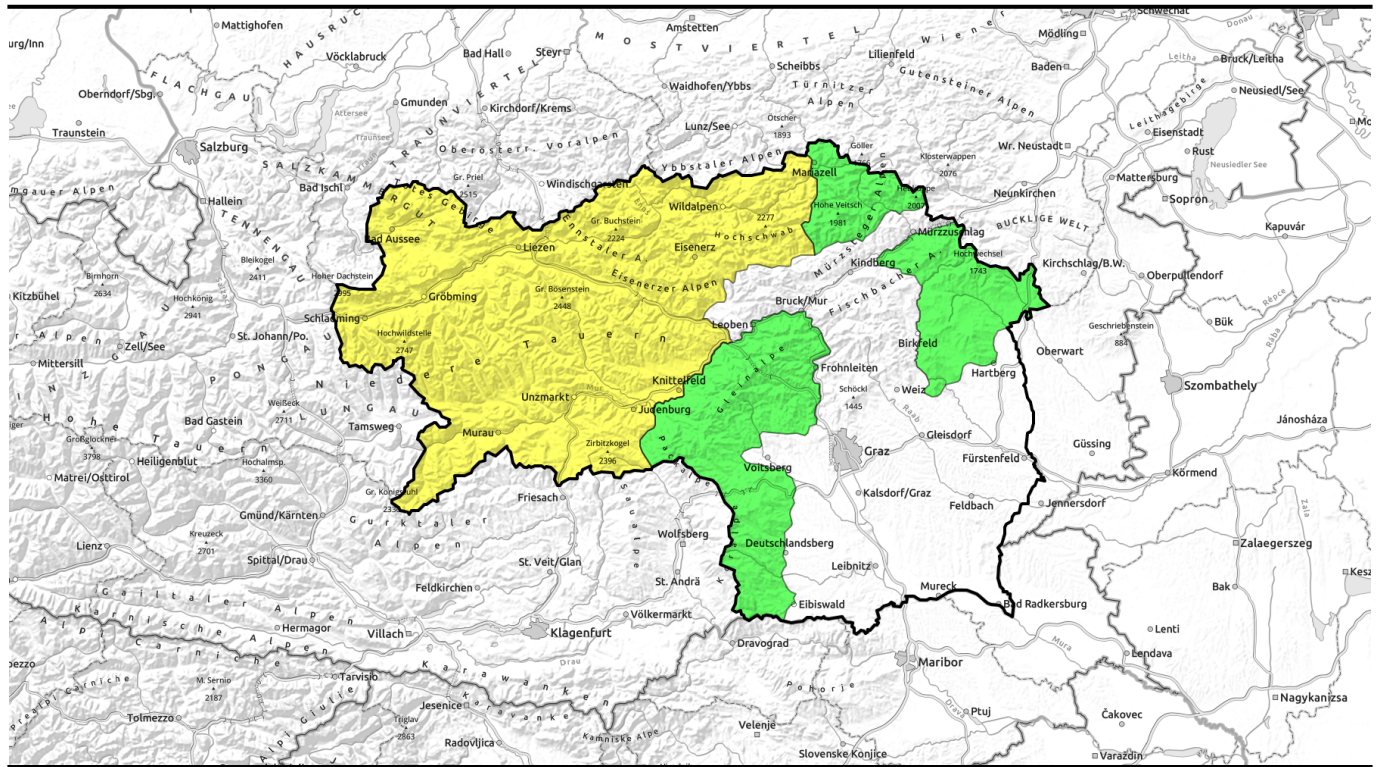
Danger ratings



Expositions



26.02.2021, afternoon



Frühlingshafte Bedingungen - Vorsicht vor Nassschneelawinen!



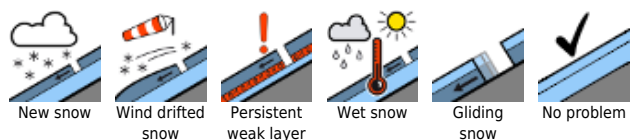
Stub- und Gleinalpe, Koralpe, Östliche Fischbacher Alpen und Wechselgebiet, Müritzsteger Alpen



Dachsteingebiet, Totes Gebirge, Nördliche Wölzer Tauern, Schladminger Tauern, Südliche Wölzer Tauern, Gurktaler Alpen, Seetaler Alpen, Seckauer Tauern, Rottenmanner Tauern, Ennstaler Alpen, Hochschwabgebiet, Eisenerzer Alpen



Avalanche problems



Danger ratings



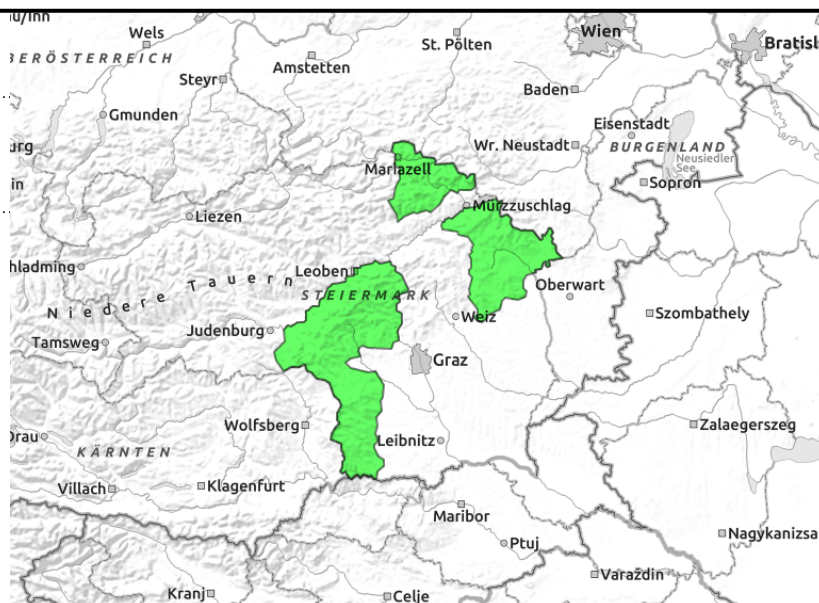
Expositions



Stub- und Gleinalpe, Koralpe, Östliche Fischbacher Alpen und Wechselgebiet, Mürzsteiger Alpen



severely dependent on slope aspect



Low avalanche danger. Nonetheless: caution towards small naturally triggered wet-snow / glide-snow avalanches.

Low avalanche danger prevails in general. On sunny slopes in extremely steep terrain, small naturally triggered wet loose-snow avalanches can be expected.

Snowpack structure

On sunny slopes the snowpack rapidly becomes moist during the day. At low altitudes on sunny slopes there is hardly any snow, also higher altitude slopes are becoming bare in sunny aspects.

Weather

On Friday it will still be sunny in the Styrian mountains, only on Friday night will a perturbation move in. It will remain mild, temperatures at 2000 m at +6 degrees. Winds will be light from varying directions.

Outlook

Saturday will bring some cloud, lower temperatures, a bit of precipitation in the northern regions. The snowfall level will drop to 1000 m for a short time. The wet-snow problem will recede.

Avalanche problems



Danger ratings

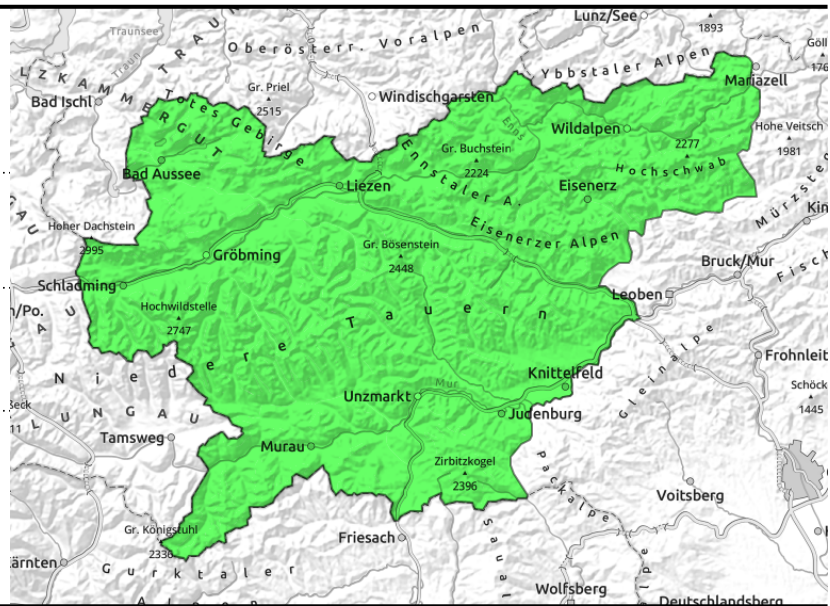


Expositions



26.02.2021, morning

Dachsteingebiet, Totes Gebirge, Nördliche Wölzer Tauern, Schladminger Tauern, Südliche Wölzer Tauern, Gurktaler Alpen, Seetaler Alpen, Seckauer Tauern, Rottenmanner Tauern, Ennstaler Alpen, Hochschwabgebiet, Eisenerzer Alpen



severely depended on slope aspect



Daytime cycle of avalanche danger due to sunny-slope wet-snow problem. On shady slopes, isolated old-snow problem

On sunny slopes at high altitudes the danger of wet-snow avalanches (natural and artificial) will swiftly increase during the day. Due to lower-than-average snow depths these will mostly be medium-sized (magnitude 2), but possibly larger in the regions where snowfall has been heaviest. At intermediate altitudes in extremely steep terrain, small wet loose-snow avalanches, and isolated glide-snow avalanches, can be expected.

On shady slopes above 2000 m there are pieces of terrain where the snowpack fundament is weak (old-snow problem), older snowpack accumulations can in isolated cases be triggered as a slab avalanche by large additional loading.

Snowpack structure

On sunny slopes: despite relatively high temperatures the snowpack regains firmness during the nights of clear skies. In early morning the surfaces are hard, firm snow develops later in the morning, and as of midday, depending on altitude, softens and forms slushy snow.

Weather

On Friday it will still be sunny in the Styrian mountains, only on Friday night will a perturbation move in. It will remain mild, temperatures at 2000 m at +6 degrees. Winds will be light from varying directions.

Outlook

Saturday will bring cloud cover, lower temperatures and a bit of precipitation in the northern regions. The snowfall level will drop to 1000 m for a short time. The wet-snow problem will recede, but as a result of the snowfall the danger of slab avalanches will increase slightly.

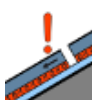
Avalanche problems



New snow



Wind drifted snow



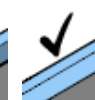
Persistent weak layer



Wet snow

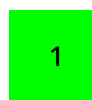


Gliding snow



No problem

Danger ratings



1

low



2

moderate



3

considerable



4

high



5

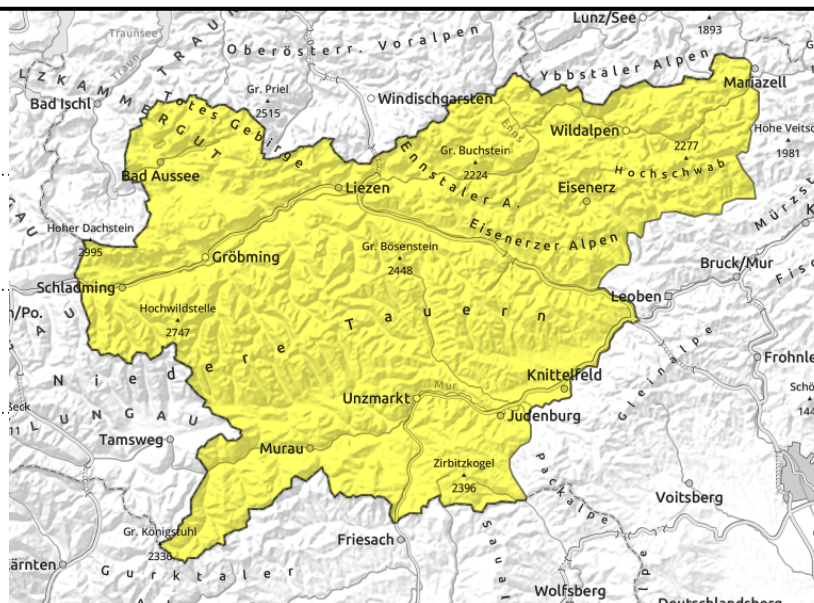
very high

Expositions



26.02.2021, afternoon

Dachsteingebiet, Totes Gebirge, Nördliche Wölzer Tauern, Schladminger Tauern, Südliche Wölzer Tauern, Gurktaler Alpen, Seetaler Alpen, Seckauer Tauern, Rottenmanner Tauern, Ennstaler Alpen, Hochschwabgebiet, Eisenerzer Alpen



severely depended on slope aspect



Daytime cycle of avalanche danger due to sunny-slope wet-snow problem. On shady slopes, isolated old-snow problem

On sunny slopes at high altitudes the danger of wet-snow avalanches (natural and artificial) will swiftly increase during the day. Due to lower-than-average snow depths these will mostly be medium-sized (magnitude 2), but possibly larger in the regions where snowfall has been heaviest. At intermediate altitudes in extremely steep terrain, small wet loose-snow avalanches, and isolated glide-snow avalanches, can be expected.

On shady slopes above 2000 m there are pieces of terrain where the snowpack fundament is weak (old-snow problem), older snowpack accumulations can in isolated cases be triggered as a slab avalanche by large additional loading.

Snowpack structure

On sunny slopes: despite relatively high temperatures the snowpack regains firmness during the nights of clear skies. In early morning the surfaces are hard, firm snow develops later in the morning, and as of midday, depending on altitude, softens and forms slushy snow.

Weather

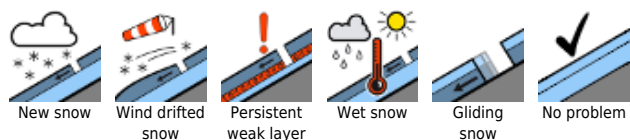
On Friday it will still be sunny in the Styrian mountains, only on Friday night will a perturbation move in. It will remain mild, temperatures at 2000 m at +6 degrees. Winds will be light from varying directions.

Outlook

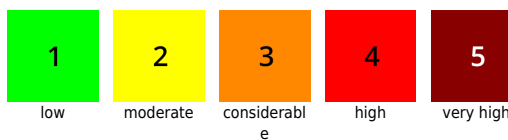
Saturday will bring cloud cover, lower temperatures and a bit of precipitation in the northern regions. The snowfall level will drop to 1000 m for a short time. The wet-snow problem will recede, but as a result of the snowfall the danger of slab avalanches will increase slightly.

Translated by Jeffrey McCabe, www.creativtrans.com

Avalanche problems



Danger ratings



Expositions

