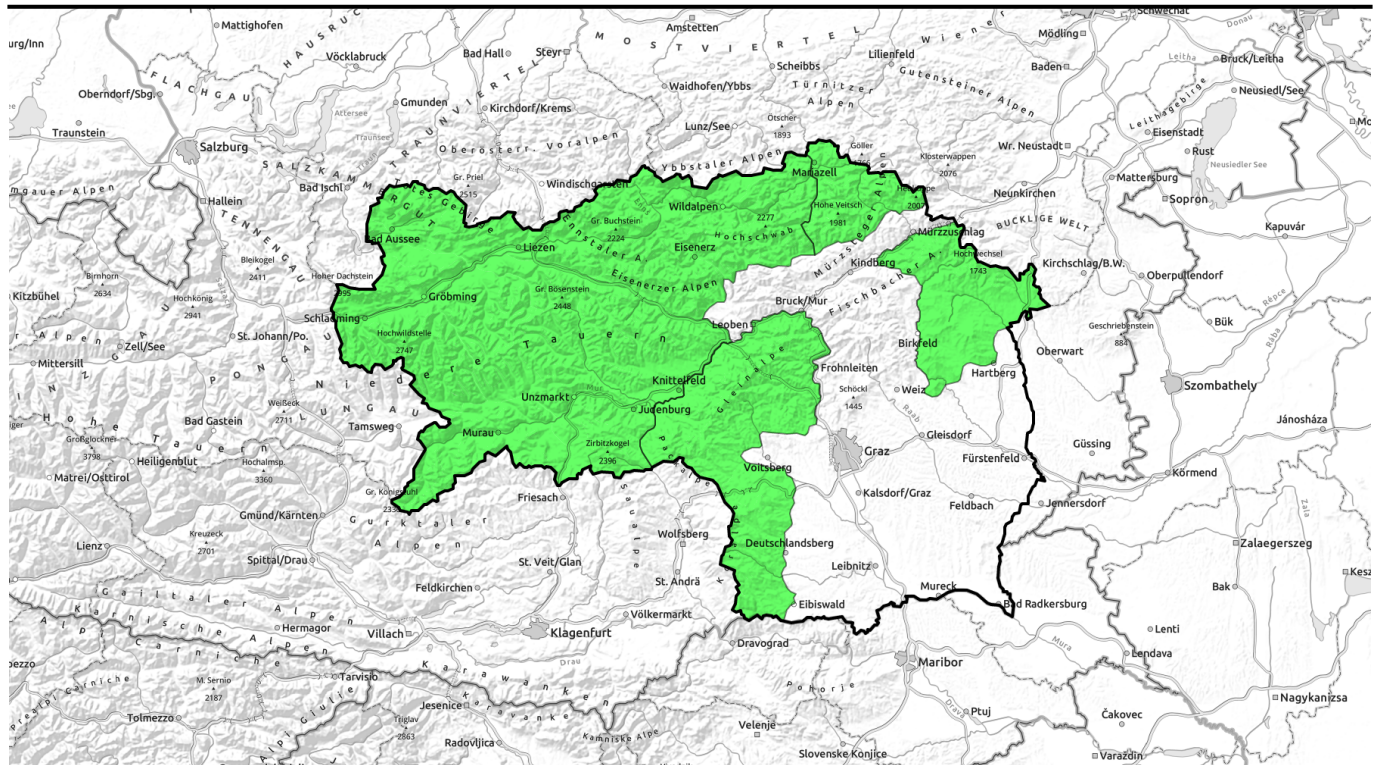



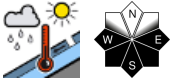

25.02.2021, morning



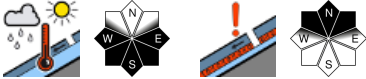
Conditions just like in spring. Beware wet-snow avalanches.

- 

Stub- und Gleinalpe, Koralpe, Östliche Fischbacher Alpen und Wechselgebiet, Mürzsteiger Alpen


- 

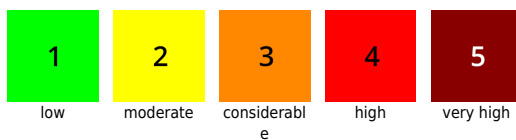
Dachsteingebiet, Totes Gebirge, Nördliche Wölzer Tauern, Schladminger Tauern, Südliche Wölzer Tauern, Gurktaler Alpen, Seetaler Alpen, Seckauer Tauern, Rottenmanner Tauern, Ennstaler Alpen, Hochschwabgebiet, Eisenerzer Alpen



Avalanche problems



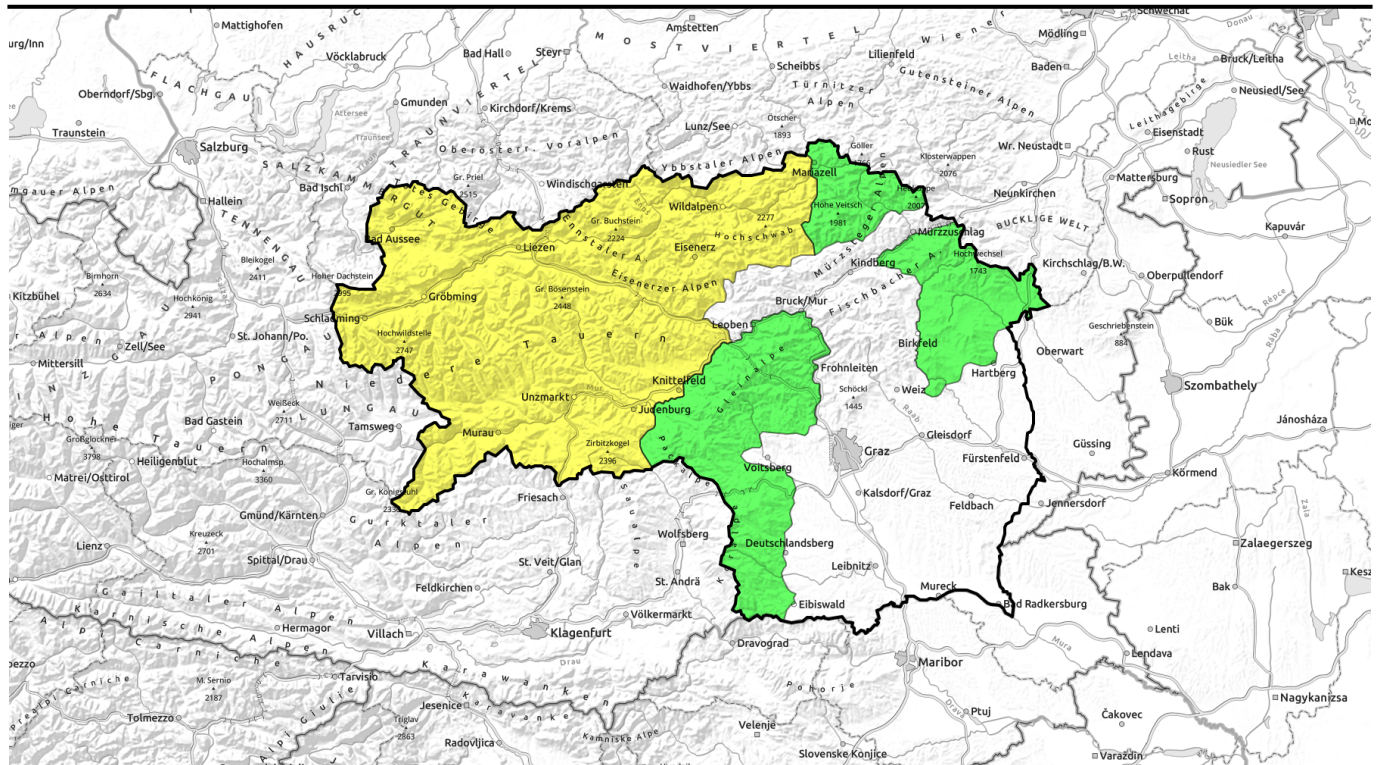
Danger ratings




Expositions



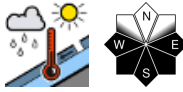

25.02.2021, afternoon



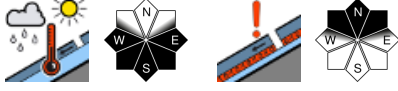
Frühlingshafte Bedingungen - Vorsicht vor Nassschneelawinen!

- 

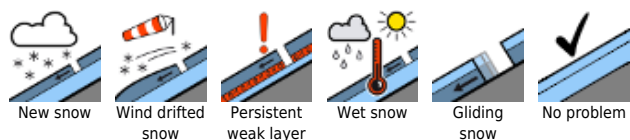
1 Stub- und Gleinalpe, Koralpe, Östliche Fischbacher Alpen und Wechselgebiet, Mürtzsteger Alpen


- 

2 Dachsteingebiet, Totes Gebirge, Nördliche Wölzer Tauern, Schladminger Tauern, Südliche Wölzer Tauern, Gurktaler Alpen, Seetaler Alpen, Seckauer Tauern, Rottenmanner Tauern, Ennstaler Alpen, Hochschwabgebiet, Eisenerzer Alpen



Avalanche problems



Danger ratings



Expositions

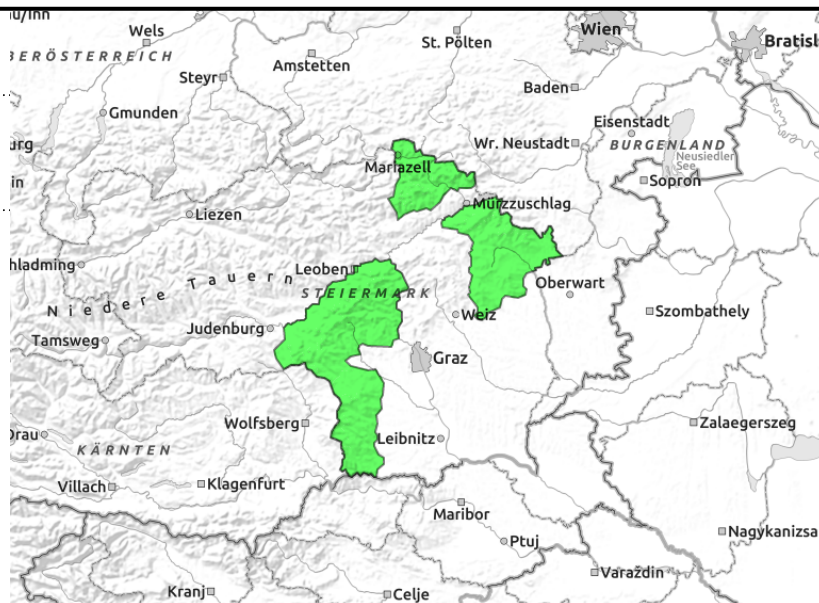


25.02.2021

Stub- und Gleinalpe, Koralpe, Östliche Fischbacher Alpen und Wechselgebiet, Mürzsteiger Alpen



heavily dependent on slope aspect



Low avalanche danger, but caution urged towards small naturally triggered wet-snow / glide-snow avalanches

Low avalanche danger prevails generally. On sunny, extremely steep slopes, small, naturally triggered wet loose-snow and glide-snow avalanches can be expected.

Snowpack structure

On sunny slopes the snowpack rapidly becomes moist during the daytime (or wet-and-rotten). At low altitudes on sunny slopes there is hardly any snow, even higher altitudes are beginning to bare the slopes in sunny aspects.

Weather

On Thursday, sunny mountain weather will reign, although visibility will be hampered by the haziness created by Sahara desert dust. It will be very mild, temperatures at 2000 m will be +8 degrees, winds will be light from southwesterly directions.

Outlook

It will remain sunny and warm. Wet snow remains the major avalanche problem.

Avalanche problems



Danger ratings

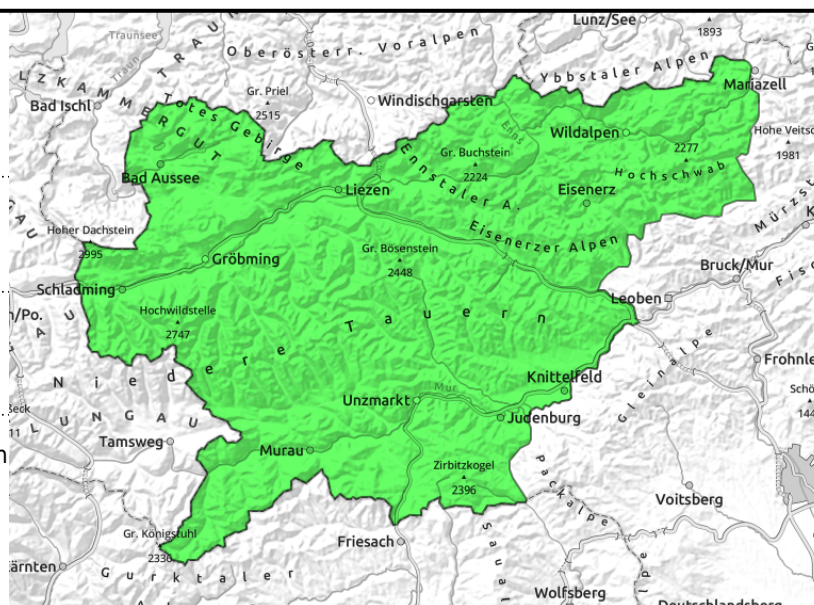


Expositions



25.02.2021, morning

Dachsteingebiet, Totes Gebirge, Nördliche Wölzer Tauern, Schladminger Tauern, Südliche Wölzer Tauern, Gurktaler Alpen, Seetaler Alpen, Seckauer Tauern, Rottenmanner Tauern, Ennstaler Alpen, Hochschwabgebiet, Eisenerzer Alpen



heavily dependent on slope aspect



in shady and high-alpine terrain

Daytime cycle of avalanche danger due to wet-snow problem on sunny slopes, isolated old-snow problem on shady slopes

On sunny slopes at high altitudes, danger of wet-snow slab avalanches (naturally and artificially triggered) will swiftly rise during the course of the day. Due to lower-than-average snow depths these will mostly be medium-sized (magnitude 2), in areas where snowfall has been heavy also large sized avalanches are possible in isolated cases. At intermediate altitudes in extremely steep terrain, small wet loose-snow avalanches and isolated glide-snow avalanches can be expected.

On shady slopes, there are spots where the snowpack fundament is weak (old-snow problem), older snowdrift accumulations can in isolated cases trigger by large additional loading, unleashing a slab avalanche.

Snowpack structure

On sunny slopes: despite relatively high temperatures the snowpack is gaining in firmness as a result of the cloudless nighttime skies. In early morning the surfaces are hard, turn to firm snow in the morning hours, then as of midday, depending on altitude, soften to slushy snow.

On shady slopes: firmness increases during the nocturnal hours due to outgoing radiation, but the snow also has cold reserves and does not soften up during the daytime. At higher altitudes, layers of faceted crystals and depth hoar are weakening the fundament (old-snow problem).

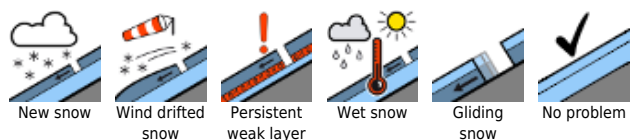
Weather

On Thursday, sunny weather will reign supreme, visibility will only be hampered by the dust blown northwards from the Sahara desert. It will be very mild, temperatures at 2000 m will be about +8 degrees. Winds will be southwesterly, blowing at light strength.

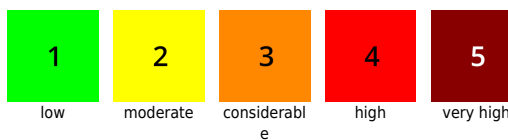
Outlook

It will remain sunny and warm. Wet snow remains the major avalanche problem.

Avalanche problems



Danger ratings

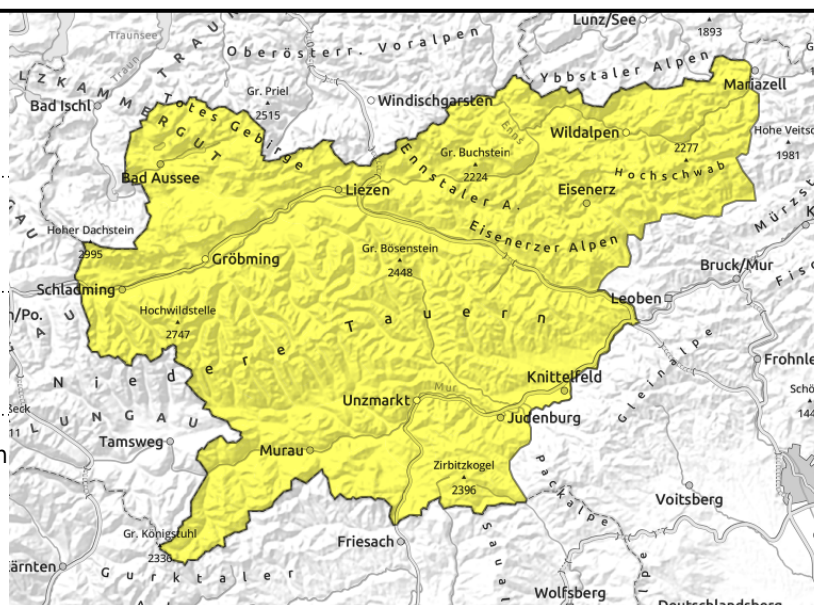


Expositions



25.02.2021, afternoon

Dachsteingebiet, Totes Gebirge, Nördliche Wölzer Tauern, Schladminger Tauern, Südliche Wölzer Tauern, Gurktaler Alpen, Seetaler Alpen, Seckauer Tauern, Rottenmanner Tauern, Ennstaler Alpen, Hochschwabgebiet, Eisenerzer Alpen



heavily dependent on slope aspect



in shady and high-alpine terrain

Daytime cycle of avalanche danger due to wet-snow problem on sunny slopes, isolated old-snow problem on shady slopes

On sunny slopes at high altitudes, danger of wet-snow slab avalanches (naturally and artificially triggered) will swiftly rise during the course of the day. Due to lower-than-average snow depths these will mostly be medium-sized (magnitude 2), in areas where snowfall has been heavy also large sized avalanches are possible in isolated cases. At intermediate altitudes in extremely steep terrain, small wet loose-snow avalanches and isolated glide-snow avalanches can be expected.

On shady slopes, there are spots where the snowpack fundament is weak (old-snow problem), older snowdrift accumulations can in isolated cases trigger by large additional loading, unleashing a slab avalanche.

Snowpack structure

On sunny slopes: despite relatively high temperatures the snowpack is gaining in firmness as a result of the cloudless nighttime skies. In early morning the surfaces are hard, turn to firm snow in the morning hours, then as of midday, depending on altitude, soften to slushy snow.

On shady slopes: firmness increases during the nocturnal hours due to outgoing radiation, but the snow also has cold reserves and does not soften up during the daytime. At higher altitudes, layers of faceted crystals and depth hoar are weakening the fundament (old-snow problem).

Weather

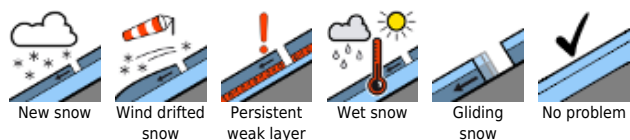
On Thursday, sunny weather will reign supreme, visibility will only be hampered by the dust blown northwards from the Sahara desert. It will be very mild, temperatures at 2000 m will be about +8 degrees. Winds will be southwesterly, blowing at light strength.

Outlook

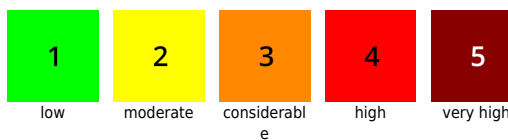
It will remain sunny and warm. Wet snow remains the major avalanche problem.

Translated by Jeffrey McCabe, www.creativtrans.com

Avalanche problems



Danger ratings



Expositions

