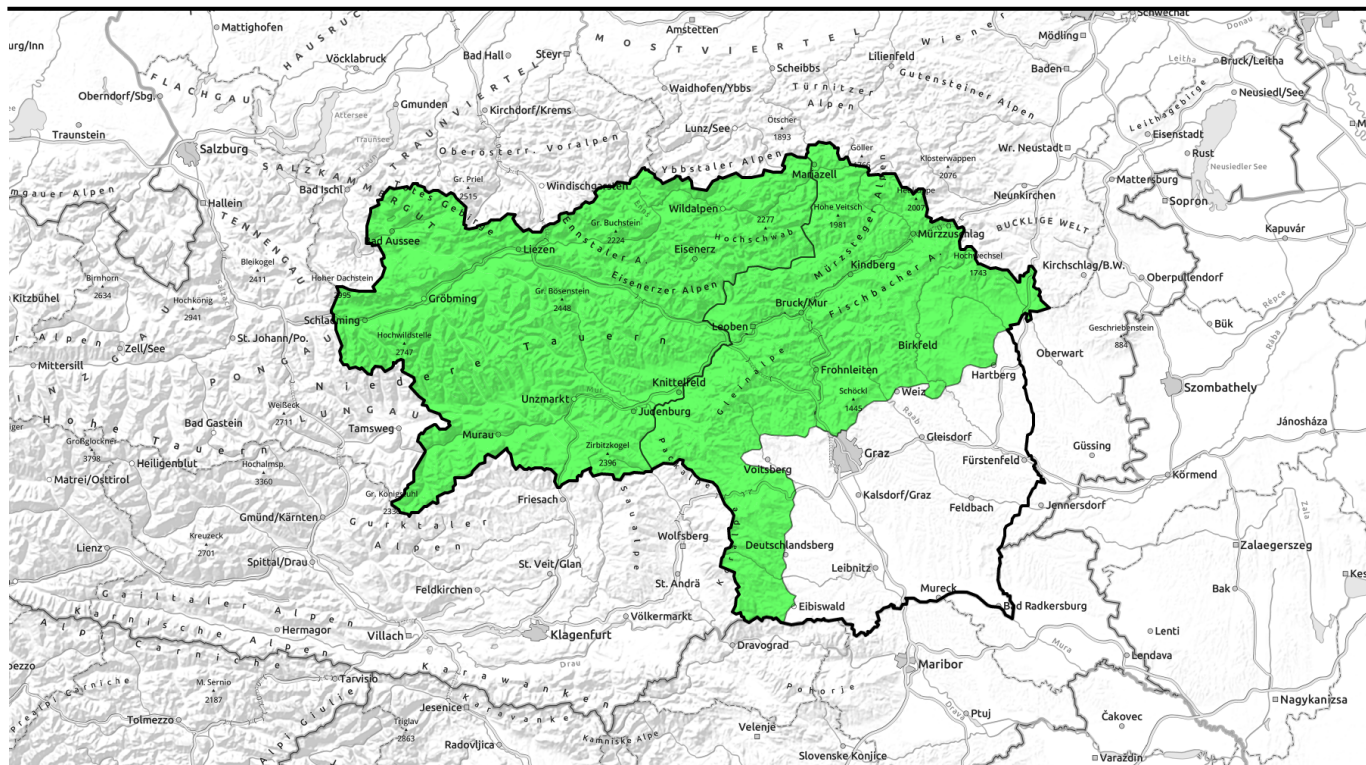


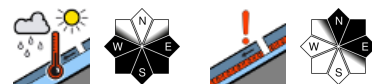
23.02.2021, morning



Springlike conditions, daytime cycle of avalanche danger. Caution: wet-snow avalanches.



Totes Gebirge, Dachsteingebiet, Schladminger Tauern, Gurktaler Alpen, Südliche Wölzer Tauern, Nördliche Wölzer Tauern, Rottenmanner Tauern, Ennstaler Alpen, Hochschwabgebiet, Eisenerzer Alpen, Seckauer Tauern, Seetaler Alpen



Mürzteger Alpen, Mürztaler Alpen, Östliche Fischbacher Alpen und Wechselgebiet, Westliche Fischbacher Alpen und Grazer Bergland, Stub- und Gleinalpe, Koralpe



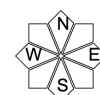
Avalanche problems



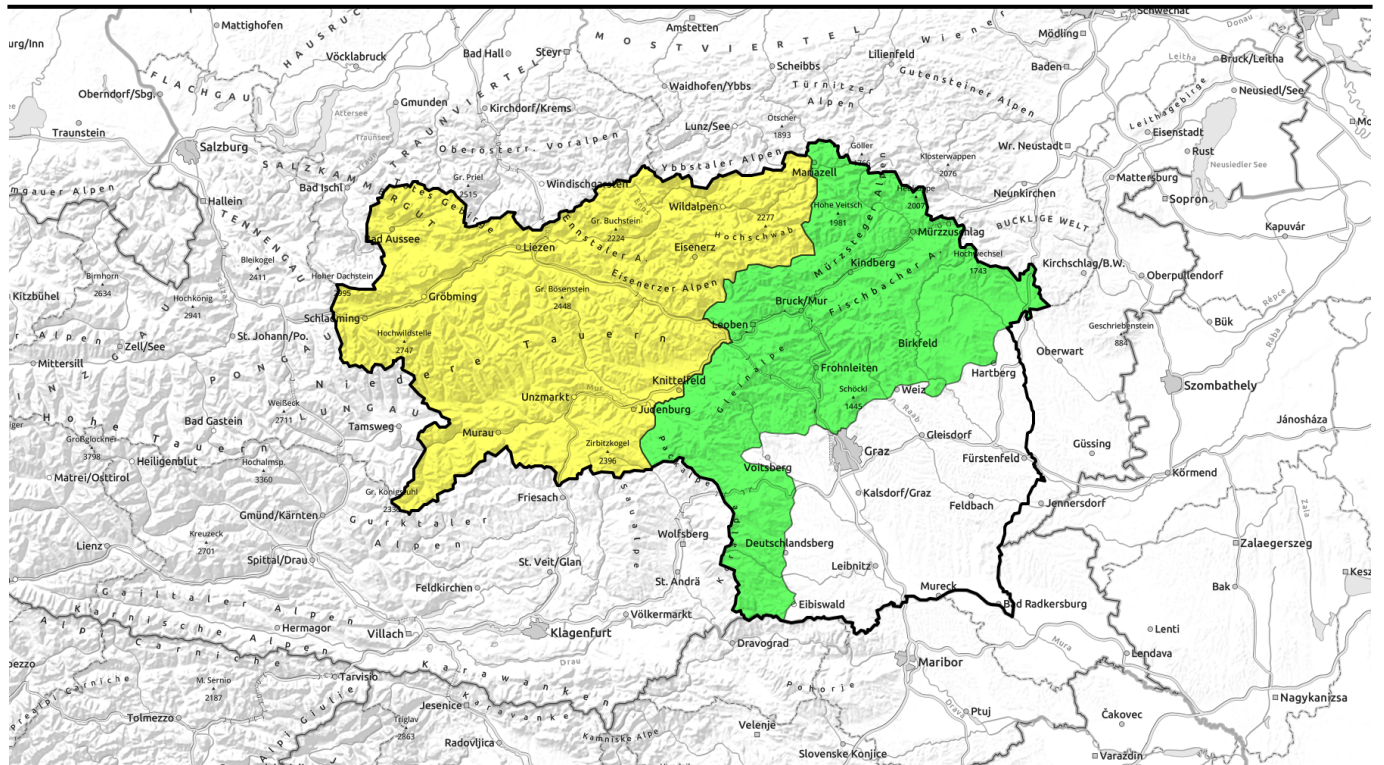
Danger ratings




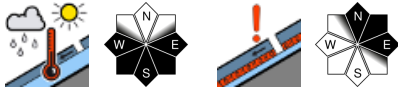


Expositions



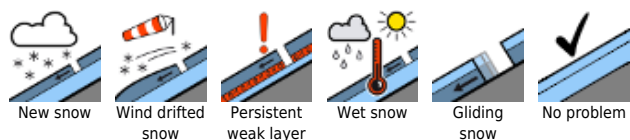
23.02.2021, afternoon



Frühlingshafte Bedingungen mit Tagesgang der Lawinengefahr - Vorsicht vor Nassschneelawinen!

	<p>Totes Gebirge, Dachsteingebiet, Schladminger Tauern, Gurktaler Alpen, Südliche Wölzer Tauern, Nördliche Wölzer Tauern, Rottenmanner Tauern, Ennstaler Alpen, Hochschwabgebiet, Eisenerzer Alpen, Seckauer Tauern, Seetaler Alpen</p>	
	<p>Mürztegger Alpen, Mürztaler Alpen, Östliche Fischbacher Alpen und Wechselgebiet, Westliche Fischbacher Alpen und Grazer Bergland, Stub- und Glinalpe, Koralpe</p>	

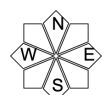
Avalanche problems



Danger ratings

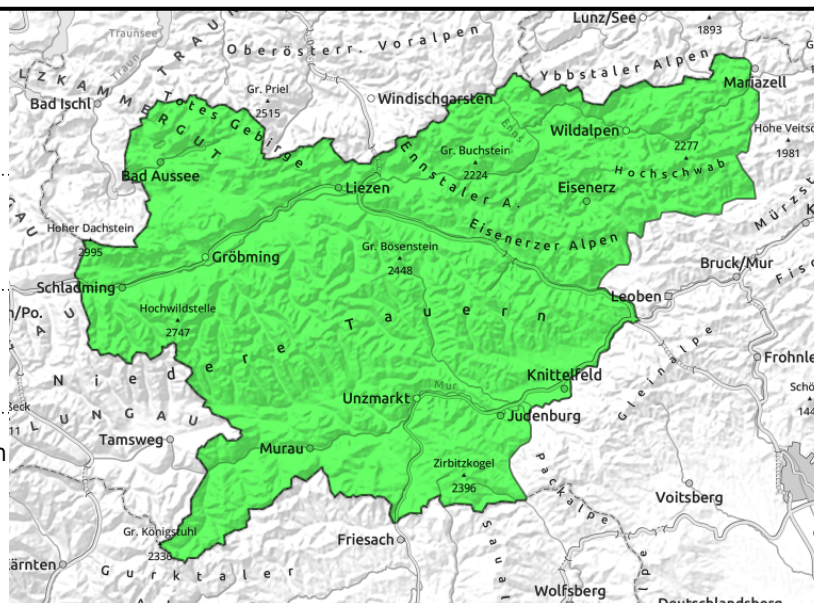


Expositions



23.02.2021, morning

Totes Gebirge, Dachsteingebiet, Schladminger Tauern, Gurktaler Alpen, Südliche Wölzer Tauern, Nördliche Wölzer Tauern, Rottenmanner Tauern, Ennstaler Alpen, Hochschwabgebiet, Eisenerzer Alpen, Seckauer Tauern, Seetaler Alpen



strong warming impulse



in shady and high alpine terrain

Daytime cycle of danger due to sunny-slope wet-snow problem. Isolated old-snow problem on shady slopes.

On sunny slopes, danger of **wet-snow slab avalanches** (naturally triggered and artificially triggered) will swiftly rise during the course of the day. In isolated cases the naturally triggered releases can reach magnitude 3 (large). At intermediate altitudes in extremely steep terrain, small wet loose-snow avalanches can be expected.

On shady slopes there are isolated parts of the terrain with a weak snowpack fundament (**old-snow problem**), older snowdrift accumulations can be triggered, primarily by large additional loading.

Snowpack structure

On sunny slopes the snowpack has become moist or, at intermediate and low altitudes, thoroughly wet. During the night, a melt-freeze crust capable of bearing loads can be generated. During the daytime, the snowpack swiftly becomes moist (or wet) due to solar radiation and higher temperatures and as a result, destabilizes at high altitudes. This can lead to wet slab and loose-snow avalanches. At intermediate altitudes the snowpack forfeits its firmness due to wetness, loses its inner cohesion, which makes small, naturally triggered loose-snow avalanches expected.

At higher altitudes on shady slopes, weak layers of faceted crystals and depth hoar are weakening the snowpack fundament (old-snow problem). Among these masses, there are older, dry snowdrift masses to be found which are poorly bonded with the fundament.

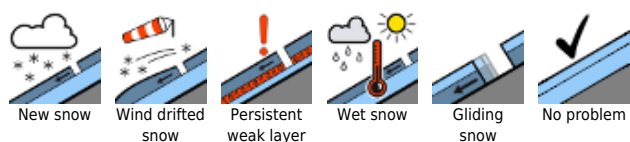
Weather

The Eastern Alps are at the center of a stable Omega High. Cloudless skies all day long, temperatures will reach +6 degrees at 2000 m, +10 degrees at 1500 m. Predominantly light winds from the southwest.

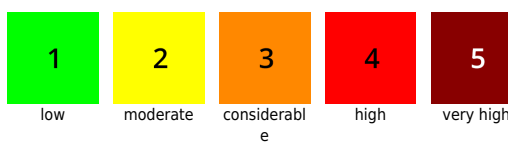
Outlook

It will remain sunny and warm. Wet-snow remains the major avalanche problem.

Avalanche problems



Danger ratings

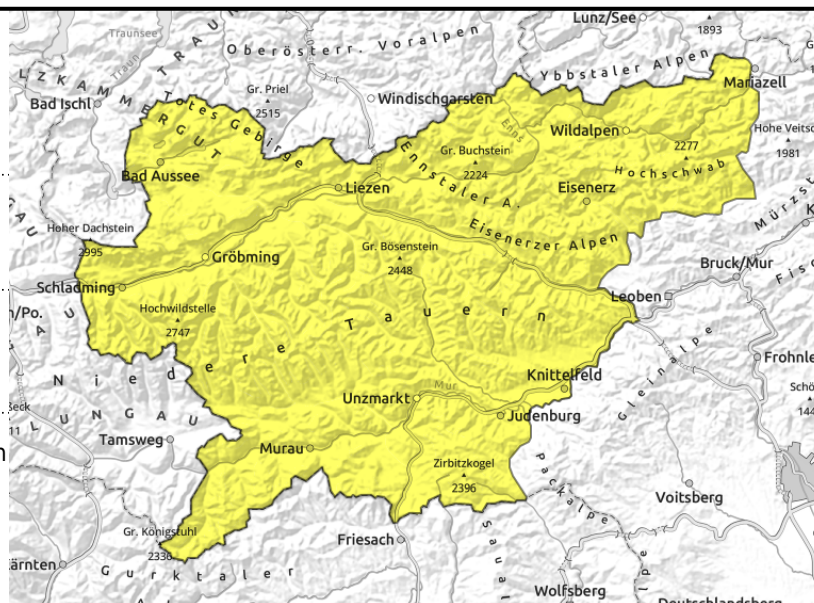


Expositions



23.02.2021, afternoon

Totes Gebirge, Dachsteingebiet, Schladminger Tauern, Gurktaler Alpen, Südliche Wölzer Tauern, Nördliche Wölzer Tauern, Rottenmanner Tauern, Ennstaler Alpen, Hochschwabgebiet, Eisenerzer Alpen, Seckauer Tauern, Seetaler Alpen



strong warming impulse



in shady and high alpine terrain

Daytime cycle of danger due to sunny-slope wet-snow problem. Isolated old-snow problem on shady slopes.

On sunny slopes, danger of **wet-snow slab avalanches** (naturally triggered and artificially triggered) will swiftly rise during the course of the day. In isolated cases the naturally triggered releases can reach magnitude 3 (large). At intermediate altitudes in extremely steep terrain, small wet loose-snow avalanches can be expected.

On shady slopes there are isolated parts of the terrain with a weak snowpack fundament (**old-snow problem**), older snowdrift accumulations can be triggered, primarily by large additional loading.

Snowpack structure

On sunny slopes the snowpack has become moist or, at intermediate and low altitudes, thoroughly wet. During the night, a melt-freeze crust capable of bearing loads can be generated. During the daytime, the snowpack swiftly becomes moist (or wet) due to solar radiation and higher temperatures and as a result, destabilizes at high altitudes. This can lead to wet slab and loose-snow avalanches. At intermediate altitudes the snowpack forfeits its firmness due to wetness, loses its inner cohesion, which makes small, naturally triggered loose-snow avalanches expected.

At higher altitudes on shady slopes, weak layers of faceted crystals and depth hoar are weakening the snowpack fundament (old-snow problem). Among these masses, there are older, dry snowdrift masses to be found which are poorly bonded with the fundament.

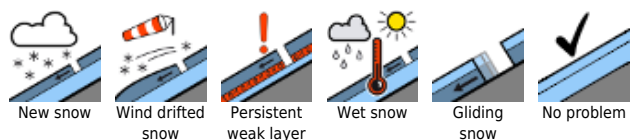
Weather

The Eastern Alps are at the center of a stable Omega High. Cloudless skies all day long, temperatures will reach +6 degrees at 2000 m, +10 degrees at 1500 m. Predominantly light winds from the southwest.

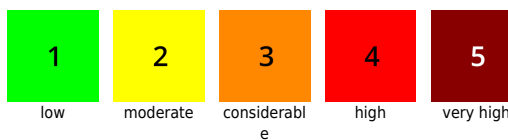
Outlook

It will remain sunny and warm. Wet-snow remains the major avalanche problem.

Avalanche problems



Danger ratings

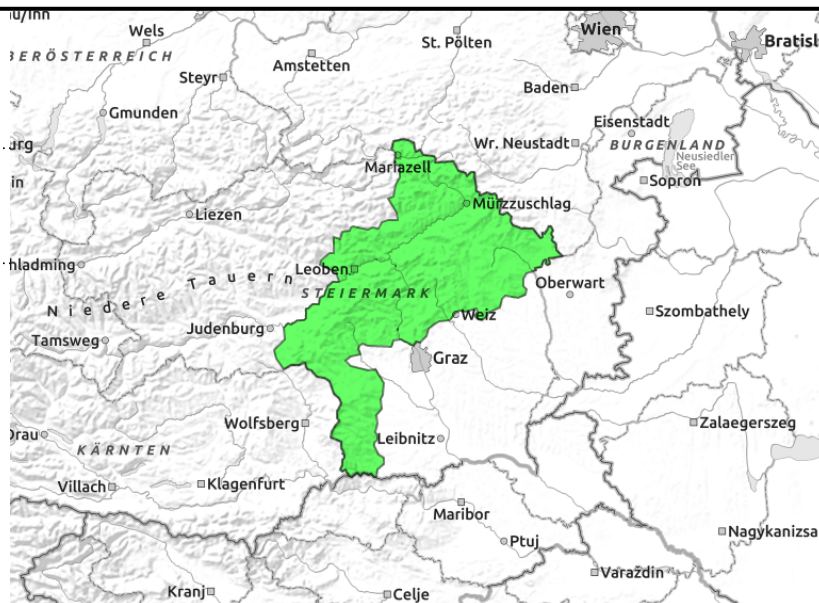
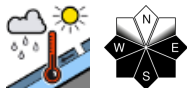


Expositions



23.02.2021

Mürzsteiger Alpen, Mürztaler Alpen, Östliche Fischbacher Alpen und Wechselgebiet, Westliche Fischbacher Alpen und Grazer Bergland, Stub- und Gleinalpe, Koralpe



Low avalanche danger. Nonetheless, caution urged towards small, naturally triggered wet-snow avalanches.

Low avalanche danger prevails in general. Only in isolated cases at highest altitudes can a snowdrift patch on shady slopes trigger a small slab avalanche. On sunny slopes in extremely steep terrain, small, naturally triggered wet loose-snow avalanches can be expected.

Snowpack structure

On shady slopes, isolated layers of faceted crystals weaken the fundament. On sunny slopes the snowpack rapidly becomes moist during the daytime, or even thoroughly wet and rotten. At low altitudes on sunny slopes there is hardly any snow left, also higher altitude zones are beginning to become bare of snow.

Weather

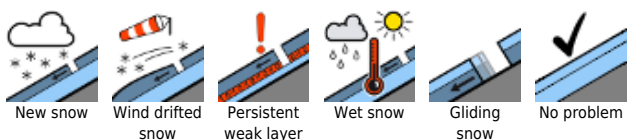
The Eastern Alps lie at the center of a stable Omega High air current. Cloudless skies all day long, temperatures at 2000m of +6 degrees, at 3000 m of +10 degrees. Very light SW winds.

Outlook

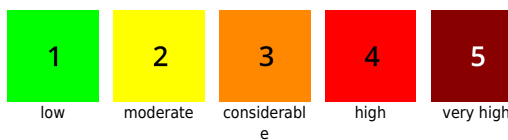
It will remain sunny and warm. Wet snow remains the major avalanche problem.

Translated by Jeffrey McCabe, www.creativtrans.com

Avalanche problems



Danger ratings



Expositions

