
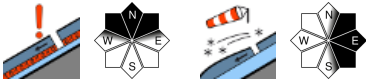






## Considerable avalanche danger due to fresh snowdrifts in southern regions. Old-snow problem in northern regions.

 <p>timberline</p>	<p>Dachsteingebiet, Nördliche Wölzer Tauern, Totes Gebirge, Rottenanner Tauern, Ennstaler Alpen, Eisenerzer Alpen, Hochschwabgebiet, Schladminger Tauern</p>	
 <p>timberline</p>	<p>Gurktaler Alpen, Seetaler Alpen, Stub- und Gleinalpe, Korralpe, Seckauer Tauern, Südliche Wölzer Tauern</p>	
 <p>timberline</p>	<p>Mürzteger Alpen, Mürtzaler Alpen, Westliche Fischbacher Alpen und Grazer Bergland, Östliche Fischbacher Alpen und Wechselgebiet</p>	

### Avalanche problems



### Danger ratings

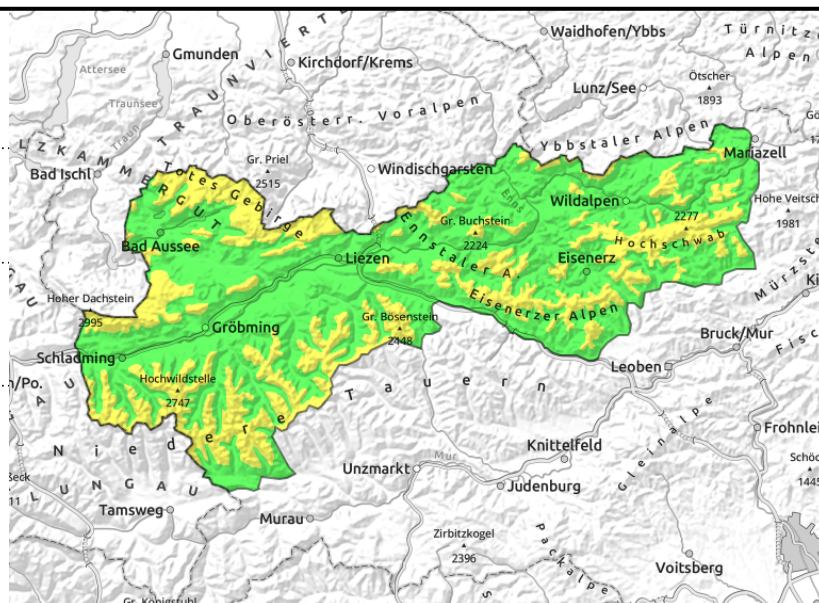
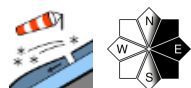
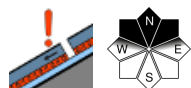
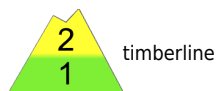


### Expositions



**08.02.2021**

**Dachsteingebiet, Nördliche Wölzer Tauern, Totes Gebirge, Rottenmanner Tauern, Ennstaler Alpen, Eisenerzer Alpen, Hochschwabgebiet, Schladminger Tauern**



## Old-snow problem on shady slopes

Moderate avalanche danger continues to prevail above the treeline. Older and fresher snowdrift accumulations on high-altitude shady slopes are still poorly bonded with the old snowpack, making slab avalanche triggerings ongoingly possible.

### Snowpack structure

On high-altitude shady slopes, older and fresher snowdrift accumulations lie deposited on top of a soft layer. Depth hoar is weakening the snowpack fundament (old-snow problem). Up to summit regions the snowpack is compact as a result of lower temperatures. The fresh snow will not consolidate well with the old snowpack.

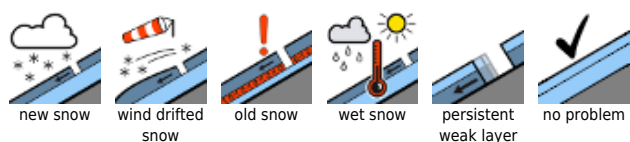
### Weather

On Monday, inhospitable weather, temperatures will drop significantly. In the northern mountain ranges, only a few light snow showers will pass through, it will often remain dry, with poor visibility. Winds westerly to southwesterly at 10-25 km/hr. Highest temperature at 2000 m: at midday -5 degrees.

### Outlook

Slight increase in avalanche danger.

#### Avalanche problems



#### Danger ratings

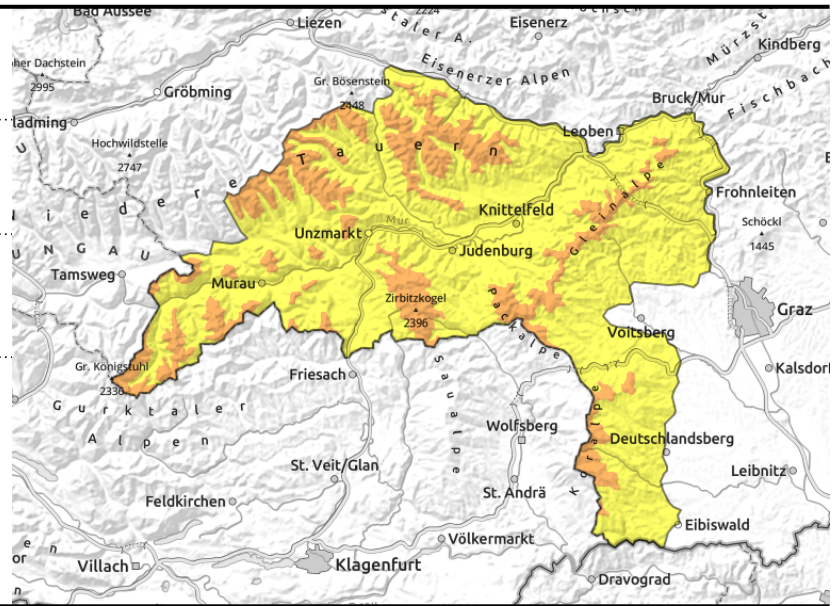
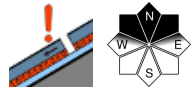
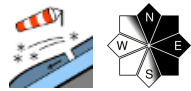


#### Expositions



**08.02.2021**

**Gurktaler Alpen, Seetaler Alpen, Stub- und Gleinalpe, Koralpe, Seckauer Tauern, Südliche Wölzer Tauern**



**Considerable avalanche danger due to fresh snowdrifts + old-snow problem at high altitudes**

Avalanche danger is considerable at high altitudes. Main problem: poor bonding of snow layers on shady slopes. Avalanche prone locations are found in N/E aspects. Due to strong southerly winds, fresh snowdrift accumulations are being generated at high altitudes. At intermediate altitudes, wet naturally triggered releases are possible.

**Snowpack structure**

Fresh snowdrift accumulations in high altitude zones deposited atop a hardened snowpack surface. Bonding between the two layers is inadequate. On north-facing slopes the old snowdrifts are poorly bonded with the soft, faceted layers of the old snowpack. Due to dropping temperatures, the snowpack is consolidating. At low altitudes the innermost snow is moist or thoroughly wet.

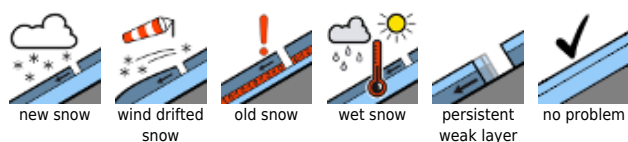
**Weather**

On Monday, inhospitable weather, temperatures will drop significantly. The peaks will frequently be shrouded in clouds and fog, snowfall can be expected, during the morning particularly in the Turrach and Seetal Alps regions. In the afternoon, focal point of the snowfall will be the Koralpe. Winds will be brisk from the southwest. Temperature at 2000 m: -5 degrees.

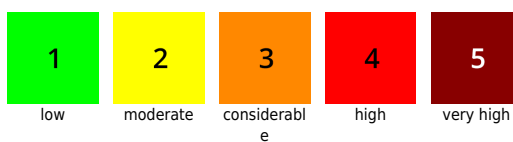
**Outlook**

No significant change is expected in avalanche danger levels.

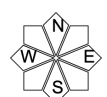
**Avalanche problems**



**Danger ratings**

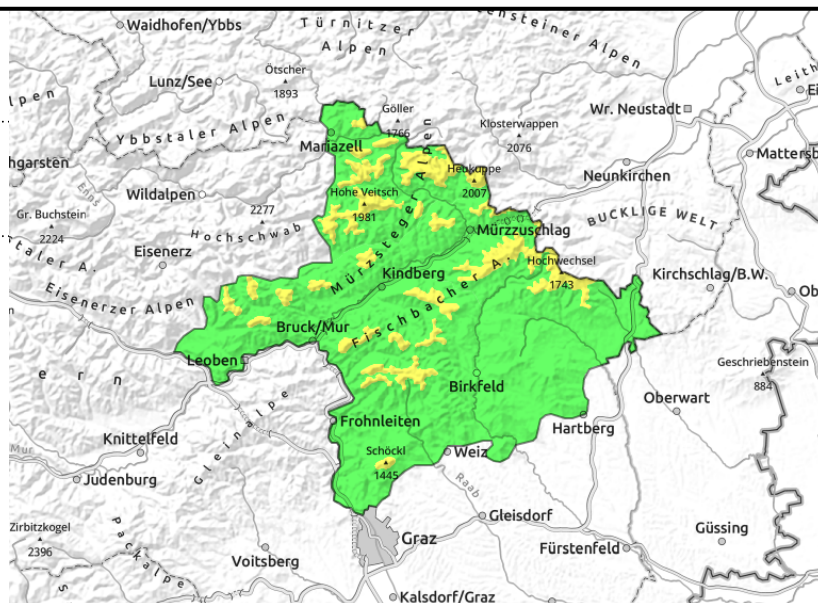
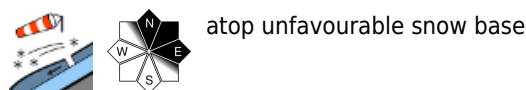
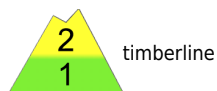


**Expositions**



**08.02.2021**

**Mürzsteger Alpen, Mürztaler Alpen, Westliche Fischbacher Alpen und Grazer Bergland, Östliche Fischbacher Alpen und Wechselgebiet**



## Fresh drifts at high altitude

In the Graz mountains, Mürztal and Fischbach Alps, low avalanche danger prevails. Above the treeline: moderate danger. On shady slopes, steep entry zones require particular caution: fresh snowdrifts can be triggered.

## Snowpack structure

Fresh snow at high altitudes will be deposited on top of a hard, compact old snowpack. At intermediate altitudes, the snow is moist or thoroughly wet.

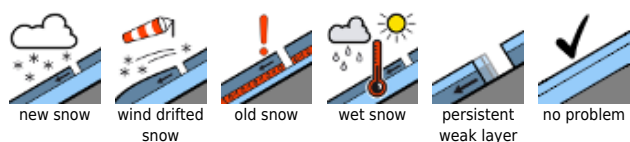
## Weather

On Monday, inhospitable weather, temperatures will drop significantly. In the afternoon, snowfall is expected in Styria's southwestern regions. Winds westerly to southwesterly at 10-25 km/hr. Highest temperature at 2000 m: at midday -5 degrees.

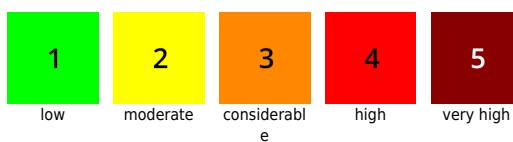
## Outlook

No significant change is expected in avalanche danger levels.

### Avalanche problems



### Danger ratings



### Expositions

