
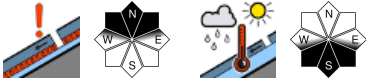






Old-snow problem on shady slopes

	<p>timberline</p>	<p>Schladminger Tauern, Südliche Wölzer Tauern, Nördliche Wölzer Tauern, Rottenmann Tauern, Ennstaler Alpen, Totes Gebirge, Dachsteingebiet, Seckauer Tauern, Eisenerzer Alpen, Hochschwabgebiet</p>	
	<p>timberline</p>	<p>Gurktaler Alpen, Seetaler Alpen, Stub- und Gleinalpe, Koralpe</p>	
	<p></p>	<p>Westliche Fischbacher Alpen und Grazer Bergland, Östliche Fischbacher Alpen und Wechselgebiet, Mürtzaler Alpen, Mürtzsteger Alpen</p>	

Avalanche problems



Danger ratings

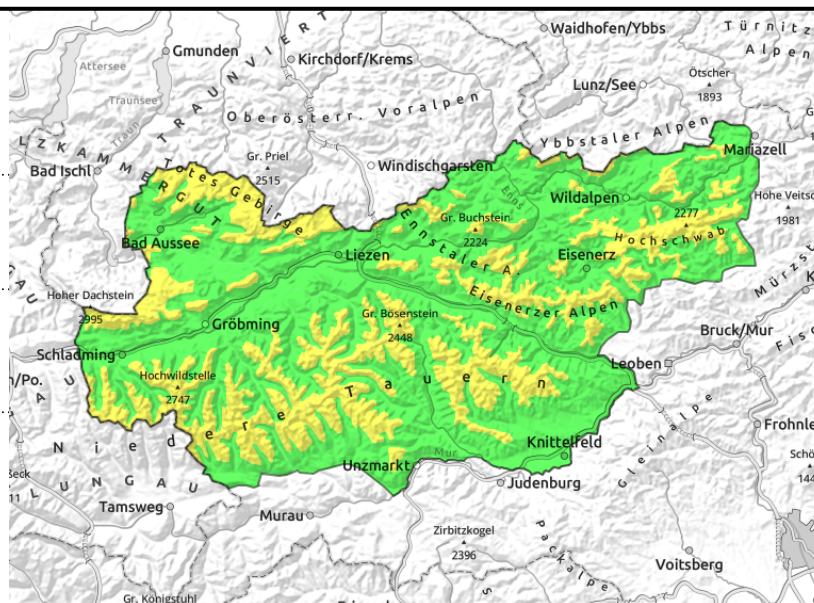
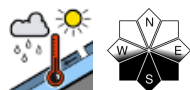
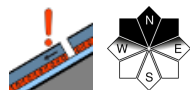
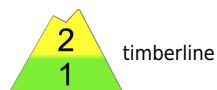


Expositions



07.02.2021

Schladminger Tauern, Südliche Wölzer Tauern, Nördliche Wölzer Tauern, Rottenmanner Tauern, Ennstaler Alpen, Totes Gebirge, Dachsteingebiet, Seckauer Tauern, Eisenerzer Alpen, Hochschwabgebiet



Moderate avalanche danger due to old-snow problem at high altitudes

Moderate avalanche danger prevails above the treeline. Older snowdrift accumulations on shady high-altitude slopes are still poorly bonded with the old snowpack, making a slab avalanche triggering possible. Glide-snow avalanches and wet slides continue to be possible.

Snowpack structure

As a result of rising temperatures the snowpack was able to settle further. On high-altitude shady slopes the older snowdrift accumulations lie deposited atop a thin layer of ice or on a soft layer of depth hoar, which weakens the snowpack fundament. On sunny slopes the snowpack is moistened up to 2000 m. A superficial melt-freeze crust is forming on the surface on Saturday night.

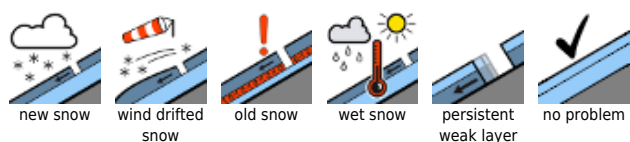
Weather

Instable weather conditions are approaching. Clouds will dominate during the course of the day, showers can gradually move in from the southwest. Continual rain and snow can ensue in the afternoon and evening in the western regions of upper Styria. The snowfall level can descend from 2000 m down to 1600 m. In the northern mountains it will remain dry for longest. Strong, foehn-induced southwesterly wind.

Outlook

On Monday, avalanche danger will increase.

Avalanche problems



Danger ratings

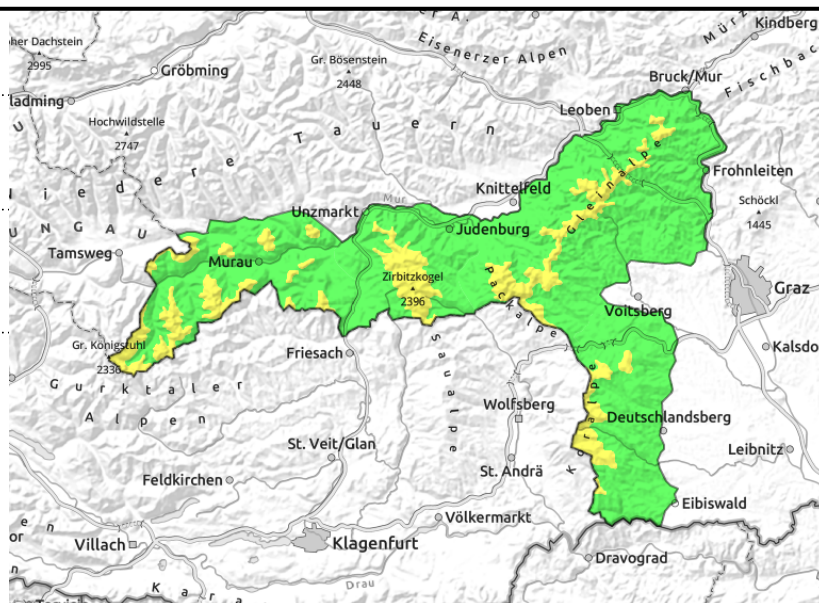
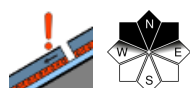
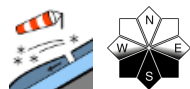


Expositions



07.02.2021

Gurktaler Alpen, Seetaler Alpen, Stub- und Gleinalpe, Koralpe



Fresh snowdrifts dute to SW air current

At high altitudes avalanche danger is moderate, the big problem is the poor bonding of the old snow in shady slopes. Avalanche prone locations are found on N/E sectors. Due to strong SW winds, fresh snowdrift accumulations are generating in high altitude areas. At intermediate altitude, wet-snow naturally triggered avalanches are possible.

Snowpack structure

Older snowdrift accumulations are poorly bonded with the soft, faceted layers of the old snowpack. On sunny slopes the snowpack is moistened up to 2000 m. On Saturday night a melt-freeze crust will form. At low altitudes the snow is moist or thoroughly wet.

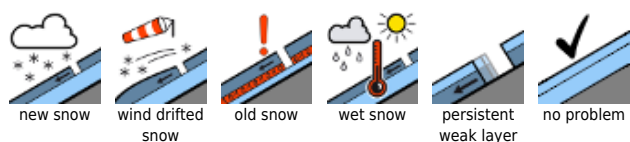
Weather

Instable weather is approaching for Sunday. Clouds will dominate, showers can occur from the southwest, we can expect persistent rainfall and snowfall in the afternoon in the afternoon and evening in Gurktal and Seetal Alps and in the westerly rimline ranges. The snowfall level will drop from 2000 m down to 1600 m in the afternoon. Winds will be blowing at strong velocity from southwesterly directions. Temperatures will drop in the afternoon to below 0 degrees at 2000 m.

Outlook

On Monday, avalanche danger will increase.

Avalanche problems



Danger ratings

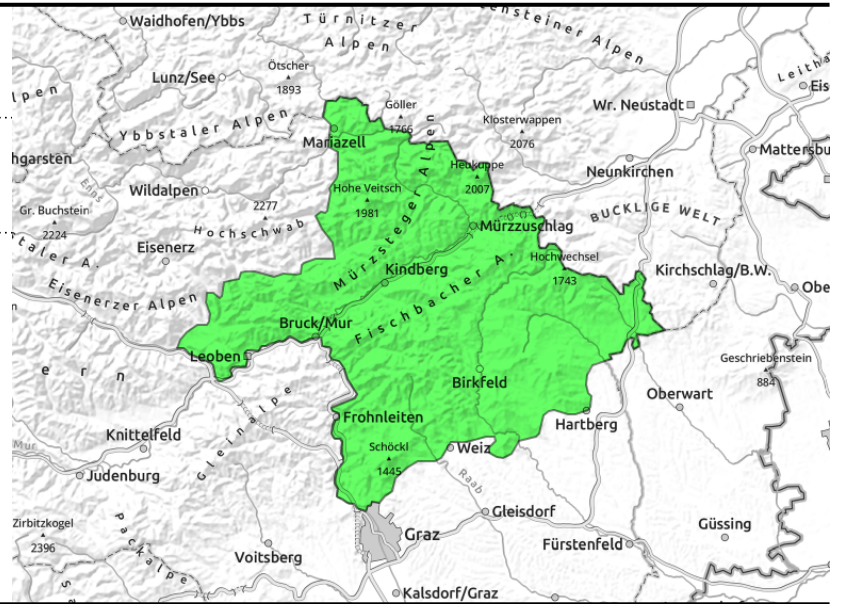
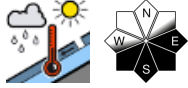


Expositions



07.02.2021

**Westliche Fischbacher Alpen und Grazer Bergland,
Östliche Fischbacher Alpen und Wechselgebiet,
Mürztaler Alpen, Mürzsteiger Alpen**



Low avalanche danger

In the Graz mountains, Mürztal and Fischbach Alps, low avalanche danger prevails. Wet-snow is the main problem. In descents, small-sized slides can be triggered.

Snowpack structure

At intermediate altitudes the snow is moist or thoroughly wet. At low altitudes, slopes are slowly becoming bare of snow. During Saturday night a melt-freeze crust is forming.

Weather

Increasingly instable mountain weather on Sunday. Cloud cover will dominate, during the course of the day showers can move in from the southwest.

Mild weather until midday. Winds will intensify.

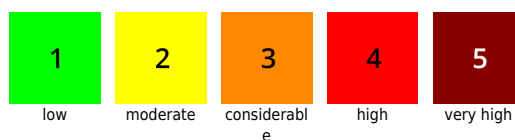
Outlook

On Monday, slight increase in avalanche danger is expected.

Avalanche problems



Danger ratings



Expositions

