
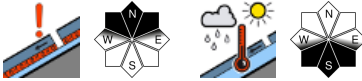

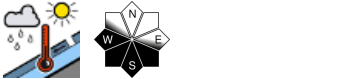




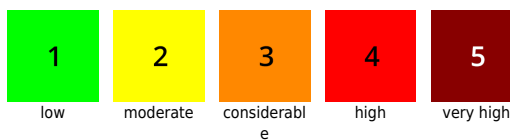
Old-snow problem on shady slopes

	<p>timberline</p>	<p>Südliche Wölzer Tauern, Seckauer Tauern, Ennstaler Alpen, Eisenerzer Alpen, Rottenmanner Tauern, Nördliche Wölzer Tauern, Schladminger Tauern, Hochschwabgebiet, Totes Gebirge, Dachsteingebiet</p>	
		<p>Westliche Fischbacher Alpen und Grazer Bergland, Östliche Fischbacher Alpen und Wechselgebiet, Mürztaler Alpen, Mürzsteger Alpen</p>	
	<p>timberline</p>	<p>Koralpe, Stub- und Gleinalpe, Seetaler Alpen, Gurktaler Alpen</p>	

Avalanche problems



Danger ratings

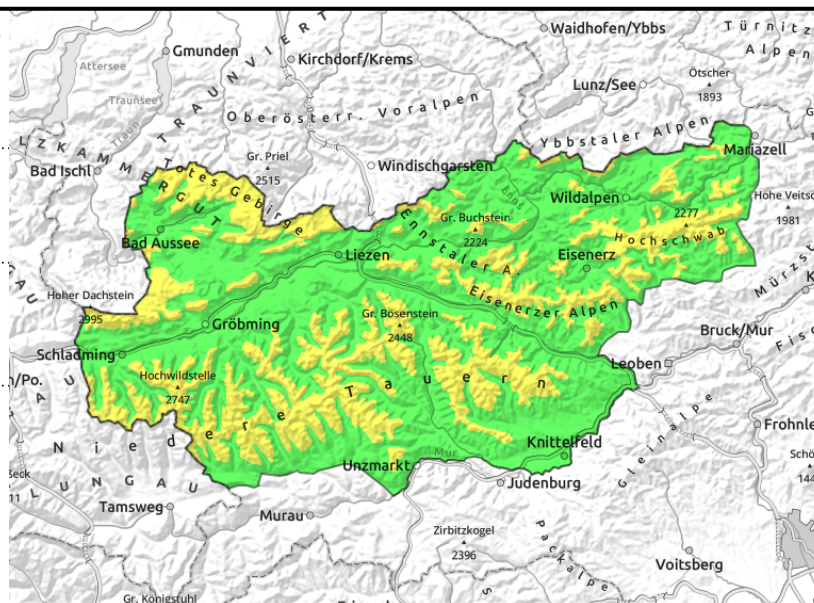
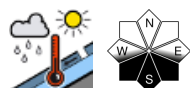
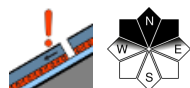
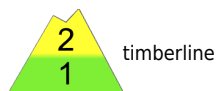


Expositions



06.02.2021

Südliche Wölzer Tauern, Seckauer Tauern, Ennstaler Alpen, Eisenerzer Alpen, Rottenmanner Tauern, Nördliche Wölzer Tauern, Schladminger Tauern, Hochschwabgebiet, Totes Gebirge, Dachsteingebiet



Old-snow problem on shady slopes. More wet-snow slides on sunny slopes in the afternoon.

Moderate avalanche danger prevails above forested zones. Older snowdrifts on shady slopes at high altitudes are still poorly bonded with the old snowpack, making a slab avalanche triggering possible. As a result of solar radiation and daytime warmth, the likelihood of glide-snow avalanches triggering, as well as naturally triggered wet-snow avalanches, will increase in the afternoon.

Snowpack structure

With rising temperatures, the snowpack was able to settle further. At higher altitudes, the older snowdrift accumulations lie deposited on top of a thin ice crust or on a softened layer. Inside the old snowpack, instable, soft layers of faceted crystals have formed. Depth hoar weakens the snowpack fundament. On sunny slopes the snowpack has become moistened up to 2000 m. On the surface, a thin melt-freeze crust will form on Friday night.

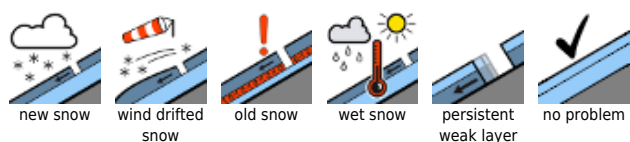
Weather

Very mild, predominantly sunny mountain weather on Saturday. Temperature at 2000 m will be +5 degrees.

Outlook

Increasingly instable mountain weather conditions on Sunday. Clouds will dominate. Particularly in afternoon and evening, rainfall and snowfall can be expected in western regions. Avalanche danger will increase slightly.

Avalanche problems



Danger ratings

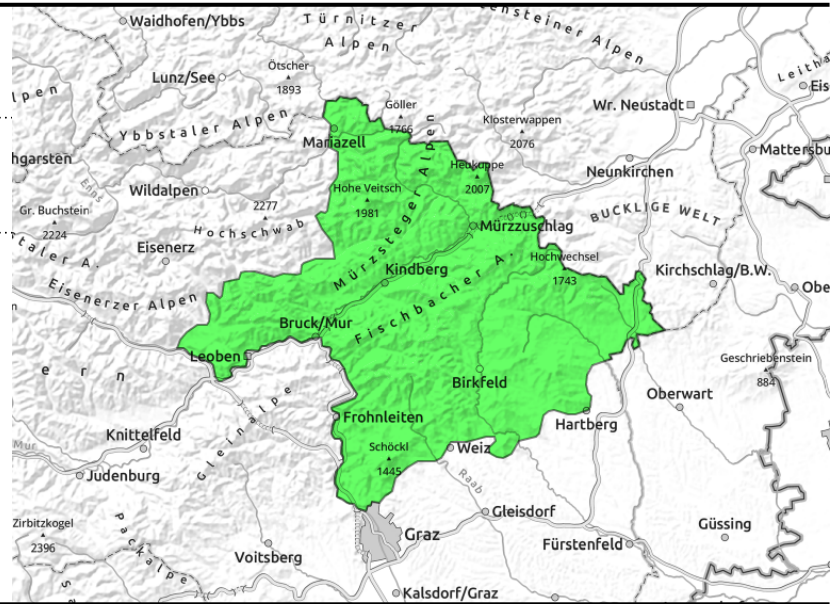
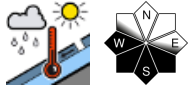


Expositions



06.02.2021

**Westliche Fischbacher Alpen und Grazer Bergland,
Östliche Fischbacher Alpen und Wechselgebiet,
Mürztaler Alpen, Mürzsteiger Alpen**



Low avalanche danger

In the Graz mountains, Mürztal and Fischbach Alps, low avalanche danger prevails. Wet snow is the main problem in this region. In descents, small slides can be triggered.

Snowpack structure

At intermediate altitudes the snow is moist or thoroughly wet. At low altitudes the slopes are slowly becoming bare of snow. On shady slopes, expansive metamorphosis is weakening the snowpack layering.

Weather

Very mild and predominantly sunny mountain weather on Saturday. Temperature at 1500 m will lie at +8 degrees.

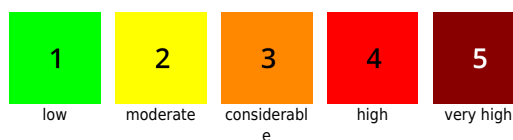
Outlook

No significant change in avalanche danger is anticipated.

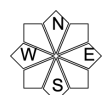
Avalanche problems



Danger ratings

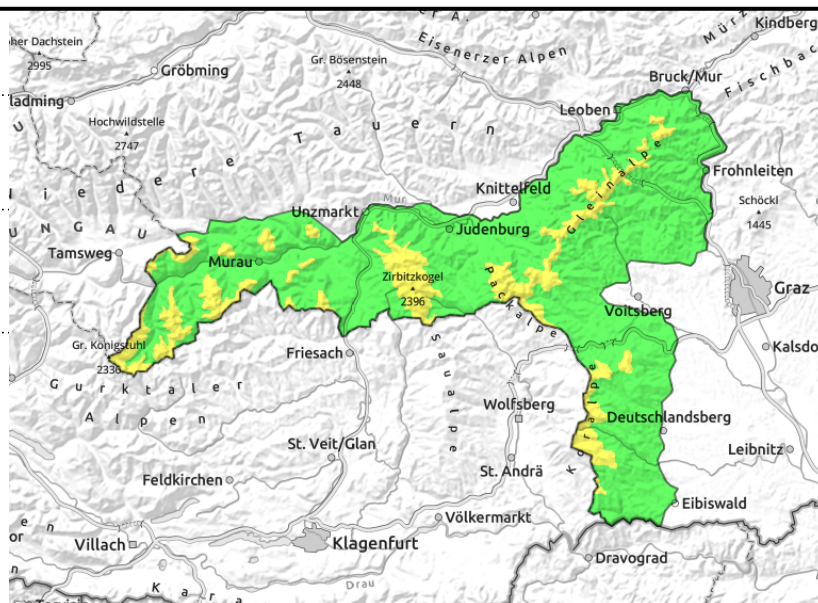
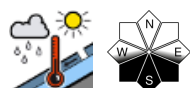
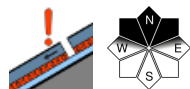


Expositions



06.02.2021

Koralpe, Stub- und Gleinalpe, Seetaler Alpen, Gurktaler Alpen



Moderate avalanche danger due to old-snow problem at high altitudes

Above forested zones, avalanche danger is moderate. Main problem: poor bonding of fresher to older snowpack layers. Avalanche prone locations are found in N/E aspects, on sunny slopes wet-snow avalanches and glide-snow avalanches can trigger naturally.

Snowpack structure

Older snowdrift accumulations are poorly bonded with the soft, faceted layers of the old snowpack. On sunny slopes the snowpack has become moistened up to 2000 m. On Friday night, a thin melt-freeze crust will form. At low altitudes the snow is moist or thoroughly wet.

Weather

Very mild, predominantly sunny mountain weather on Saturday. Temperature at 2000 m: +5 degrees.

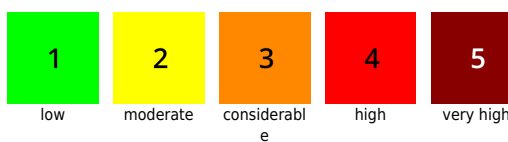
Outlook

Increasingly instable weather conditions are expected on Sunday. Clouds will dominate. Particularly in the afternoon and evening, rainfall and snowfall are expected in western regions. Avalanche danger will slightly increase.

Avalanche problems



Danger ratings



Expositions

