

High altitude snowdrifts!



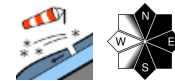
1800 m

Totes Gebirge, Dachsteingebiet, Schladminger Tauern, Nördliche Wölzer Tauern, Ennstaler Alpen, Südliche Wölzer Tauern, Rottenmanner Tauern, Eisenerzer Alpen, Seckauer Tauern, Hochschwabgebiet, Mürzsteger Alpen

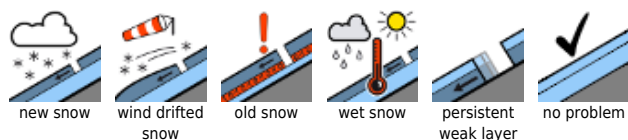


1800 m

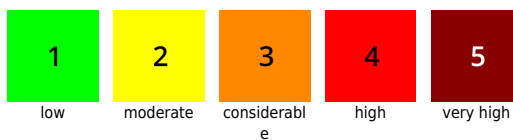
Gurktaler Alpen, Seetaler Alpen, Stub- und Gleinalpe, Koralpe, Mürztaler Alpen, Westliche Fischbacher Alpen und Grazer Bergland, Östliche Fischbacher Alpen und Wechselgebiet



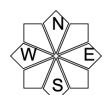
Avalanche problems



Danger ratings



Expositions



Totes Gebirge, Dachsteingebiet, Schladminger Tauern, Nördliche Wölzer Tauern, Ennstaler Alpen, Südliche Wölzer Tauern, Rottenmanner Tauern, Eisenerzer Alpen, Seckauer Tauern, Hochschwabgebiet, Mürzsteger Alpen



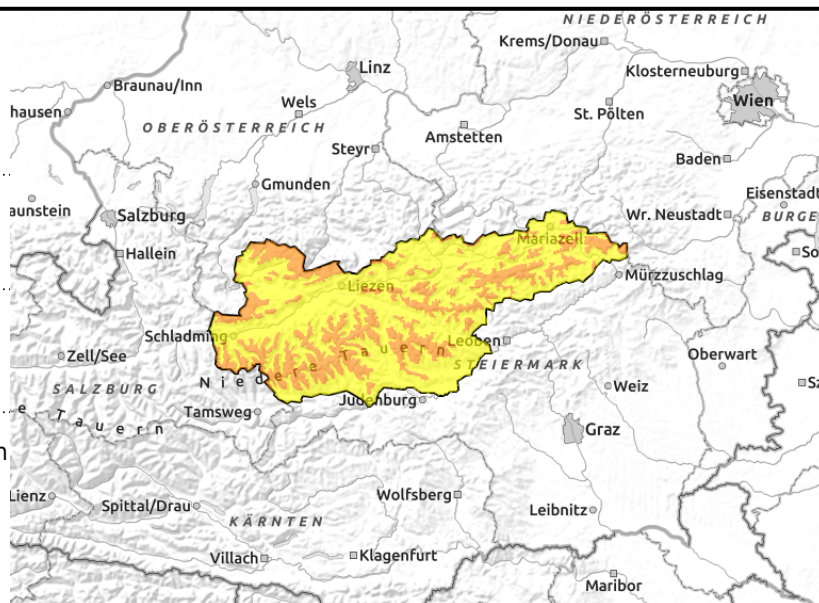
1800 m



Far-reaching snowdrifts



in shady and high alpine terrain



Considerable avalanche danger from snowdrifts at high altitude

Above 1800 m considerable avalanche danger prevails due to freshly generated snowdrifts which are bonding poorly with the snowpack fundament. Avalanche prone locations occur primarily in N-E-S aspects both near to and distant from ridgelines, at entries to gullies and bowls and behind protruberances. At very high altitudes in shady terrain, depth hoar further weakens the fundament. As numerous avalanches proved on Saturday, slab avalanches can be easily triggered even by minimum additional loading.

Snowpack structure

Above 1800 m the fresh snowdrifts are poorly bonded with the old snowpack. Weak layers inside the snowpack are evident (soft layers), also in transitions to the old snowpack. On shady slopes and at high altitudes, depth hoar is making the fundament instable.

Weather

On Sunday, gray, wintery weather conditions will reign, the snowfall level descending to the valley floor (more slowly in western regions), with some minor snowfall expected. Winds will be light to moderate from the east. Temperatures will drop slightly from west to east. At midday at 2000 m, from -4 to -6 degrees; at 1500 m, from -1 to -4 degrees.

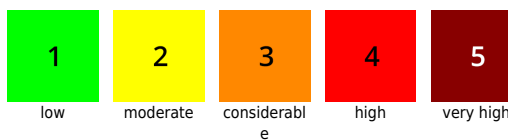
Outlook

On Monday, generally pleasant conditions, temperatures rising from the west. Snowdrift threat will recede slightly.

Avalanche problems



Danger ratings

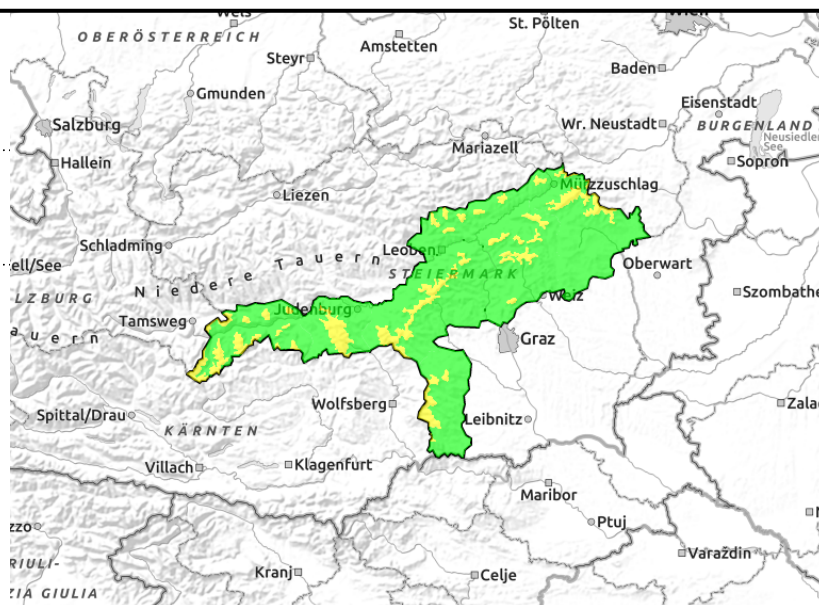
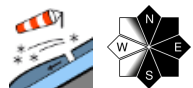


Expositions



31.01.2021

Gurktaler Alpen, Seetaler Alpen, Stub- und Gleinalpe, Korralpe, Mürztaler Alpen, Westliche Fischbacher Alpen und Grazer Bergland, Östliche Fischbacher Alpen und Wechselgebiet



Moderate avalanche danger due to snowdrifts at high altitude

Above 1800 m moderate avalanche danger prevails due to freshly generated snowdrift accumulations which are poorly bonded with the snowpack fundament. Avalanche prone locations occur primarily in N-E-S aspects, at entries to gullies and bowls and behind protruberances.

Snowpack structure

Above 1800 m, fresh drifts are poorly bonded with the old snowpack. Weak layers inside the fresh snow (soft layers) can occur, also in transitions to the old snowpack.

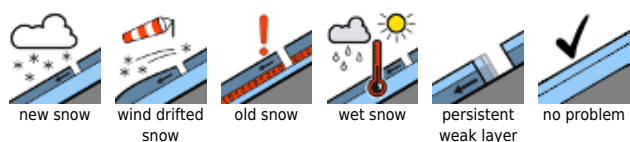
Weather

On Sunday, gray, wintery weather conditions will reign, the snowfall level descending to the valley floor (more slowly in western regions), with some minor snowfall expected. Winds will be light to moderate from the east. Temperatures will drop slightly from west to east. At midday at 2000 m, -5 degrees; at 1500 m, -3 degrees.

Outlook

On Monday, generally pleasant conditions, temperatures rising from the west. Snowdrift threat will recede slightly.

Avalanche problems



Danger ratings



Expositions

