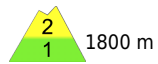


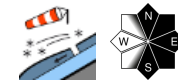
Snowdrifts at high altitudes. Wet-snow problem receding.



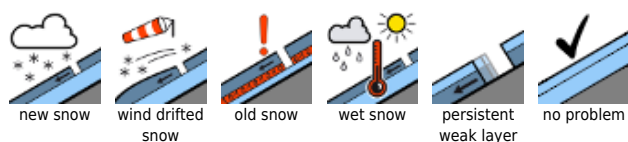
Totes Gebirge, Dachsteingebiet, Schladminger Tauern, Nördliche Wölzer Tauern, Rottenmanner Tauern, Ennstaler Alpen, Eisenerzer Alpen, Hochschwabgebiet, Mürztager Alpen, Südliche Wölzer Tauern, Seckauer Tauern



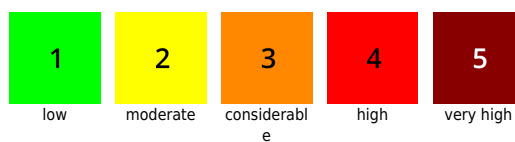
Seetaler Alpen, Gurktaler Alpen, Stub- und Gleinalpe, Mürztaler Alpen, Östliche Fischbacher Alpen und Wechselgebiet, Westliche Fischbacher Alpen und Grazer Bergland, Koralpe



Avalanche problems



Danger ratings



Expositions



30.01.2021

Totes Gebirge, Dachsteingebiet, Schladminger Tauern, Nördliche Wölzer Tauern, Rottenmanner Tauern, Ennstaler Alpen, Eisenerzer Alpen, Hochschwabgebiet, Mürzsteiger Alpen, Südliche Wölzer Tauern, Seckauer Tauern



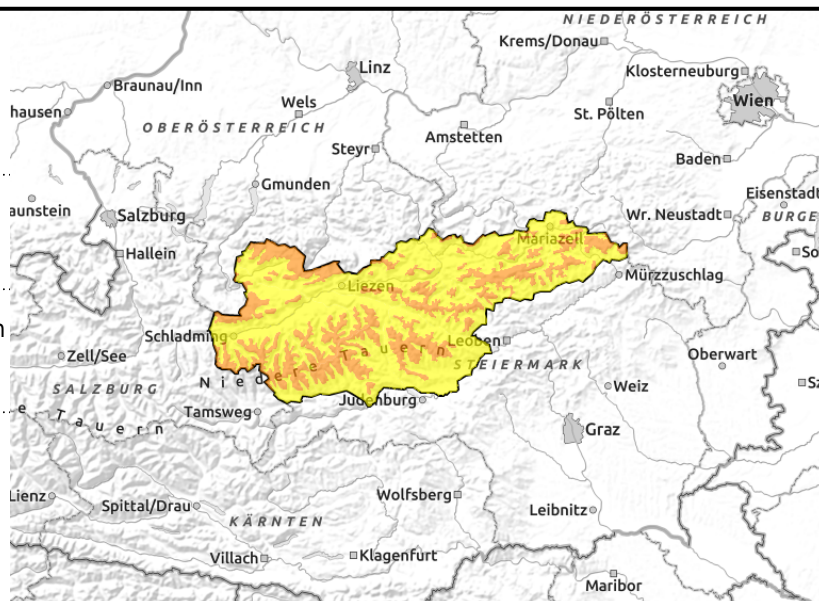
1800 m



wide-ranging snowdrifts at high altitudes



isolated naturally triggered avalanches at low altitude



Considerable avalanche danger due to fresh drifts at high altitudes

At altitudes above 1800 m, considerable avalanche danger prevails due to freshly generated snowdrift accumulations which are poorly bonded with the snowpack fundament in some places. Avalanche prone locations are found primarily in N-E-S aspects at the entries to gullies and bowls and behind protruberances in the landscape. Triggering a slab avalanche is possible even by minimum additional loading, i.e. the weight of one single skier. At intermediate and lower altitudes, isolated glide-snow avalanches are possible.

Snowpack structure

Up to high altitudes (depending on region, 1500-1900 m) the rain and snow has either moistened the snowpack or made it thoroughly wet, and led to numerous naturally triggered avalanches. As temperatures descended slightly, the stability of the snowpack will increase. At high altitudes above the snowfall level, storm winds and fresh snow have led to wide-ranging snowdrift accumulations being generated. Weak layers can occur inside this fresh snow in the form of soft snow, also in transitions to the old snow, weak layers are possible. On shady slopes, depth hoar has destabilized the snowpack fundament.

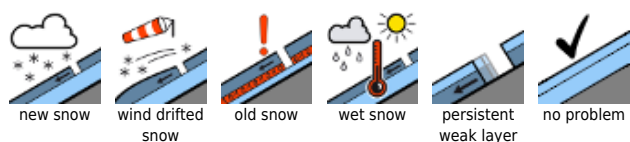
Weather

North of the Main Alpine Ridge, cloud cover will dominate on Saturday, and a strong westerly wind will be blowing. The snowfall level will lie between 800 and 1000 m, but only minor amounts of rain or snow will fall in showers. Clouds will disperse occasionally. On the southern flank of the Niedere Tauern it will remain predominantly dry. Temperatures at 2000 m will be about -3 degrees.

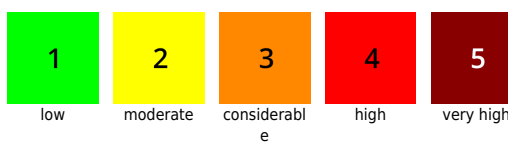
Outlook

On Sunday it will be wintery in the mountains, but only for a short spell. Amid cold temperatures, minor snowfall will come in repeated bouts. The wet-snow problem will recede, the snowdrift problem will remain in force.

Avalanche problems



Danger ratings

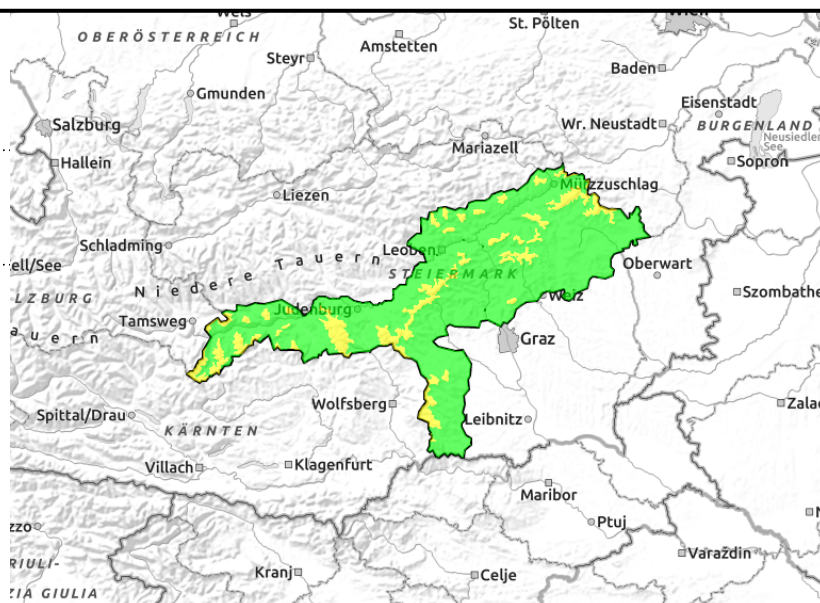
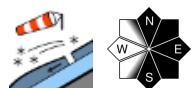


Expositions



30.01.2021

Seetaler Alpen, Gurktaler Alpen, Stub- und Gleinalpe, Mürztaler Alpen, Östliche Fischbacher Alpen und Wechselgebiet, Westliche Fischbacher Alpen und Grazer Bergland, Koralpe



Moderate avalanche danger due to fresh drifts at high altitudes

At altitudes above 1800 m, moderate avalanche danger prevails due to freshly generated snowdrift accumulations which are poorly bonded with the snowpack fundament in some places. Avalanche prone locations are found primarily in N-E-S aspects at the entries to gullies and bowls and behind protruberances in the landscape.

Snowpack structure

As a result of the warm front, bringing significantly higher temperatures, even rainfall up to high altitudes, the snowpack has become moistened. The lower temperatures which came in its wake stabilized the snowpack again. At high altitudes above 1800 m, the storm-strength westerly wind generated fresh snowdrift accumulations which are still insufficiently bonded with the old snowpack beneath them.

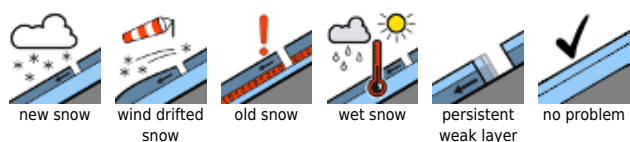
Weather

On Saturday it will remain predominantly dry, but the sun will often be shrouded behind intermediate altitude clouds. Particularly in the rimline ranges, strong-velocity westerly winds can be expected. Temperature at 2000 m, -2 degrees.

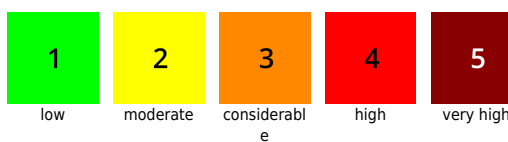
Outlook

On Sunday in the mountains it will turn wintery again, but only for a brief spell. Temperatures will be low, some minor snowfall is expected. The snowdrift problem will persist.

Avalanche problems



Danger ratings



Expositions

