
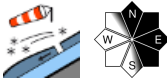

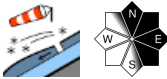

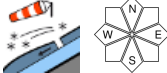
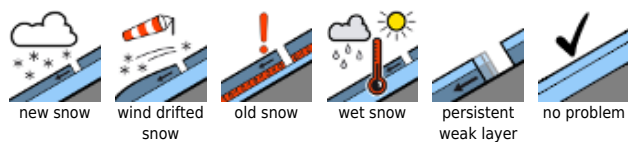


Snowdrifts - unfavourable snowpack layering

	<p>Schladminger Tauern, Dachsteingebiet, Totes Gebirge, Nördliche Wölzer Tauern, Südliche Wölzer Tauern, Seckauer Tauern, Rottenmanner Tauern, Ennstaler Alpen, Eisenerzer Alpen, Hochschwabgebiet, Mürztsteger Alpen, Mürztaler Alpen</p>	
	<p>Gurktaler Alpen, Seetaler Alpen</p>	
	<p>forestline Koralpe, Stub- und Gleinalpe, Westliche Fischbacher Alpen und Grazer Bergland, Östliche Fischbacher Alpen und Wechselgebiet</p>	

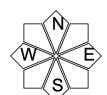
Avalanche problems



Danger ratings

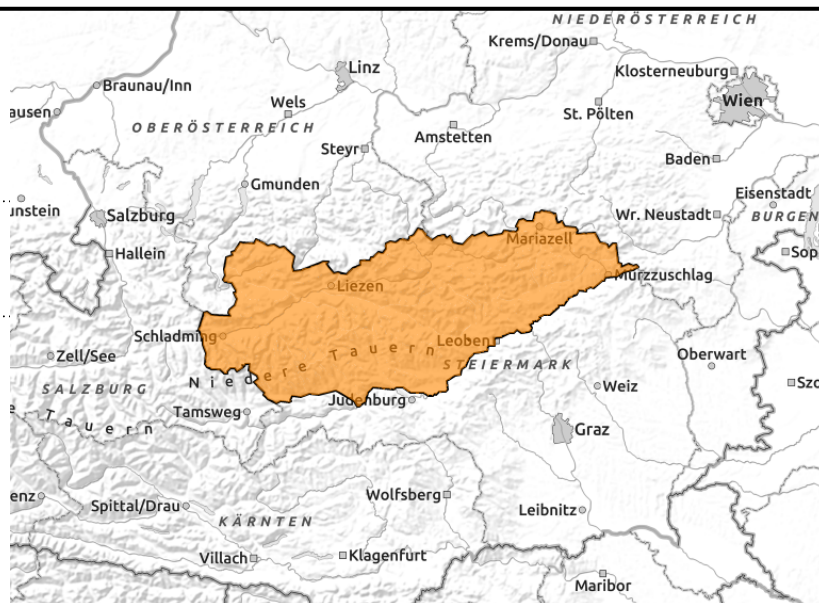
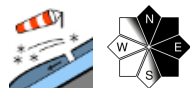


Expositions



20.01.2021

Schladminger Tauern, Dachsteingebiet, Totes Gebirge, Nördliche Wölzer Tauern, Südliche Wölzer Tauern, Seckauer Tauern, Rottenmanner Tauern, Ennstaler Alpen, Eisenerzer Alpen, Hochschwabgebiet, Mürzsteiger Alpen, Mürztaler Alpen



Snowdrift problem - considerable avalanche danger

From the Dachstein over Niedere Tauern to the Rax, considerable avalanche danger continues to prevail from freshly formed snowdrifts. These are very poorly bonded with the snowpack fundament, as artificial triggerings have demonstrated, particularly in N-E-S aspects. Triggering a slab avalanche is possible even by minimum additional loading. Avalanches can fracture down to weak, more deeply embedded layers inside the snowpack and thereby grow to large size. Caution with fresh cornices: they are instable! As a result of solar radiation, loose-snow avalanches are possible in rough or rocky terrain. At low altitudes, wet-snow slides can be expected. The SW winds will generate new drifts, deposit them on north-facing slopes.

Snowpack structure

The strong winds in some places in the northern barrier cloud regions have deposited 20-40 cm of fresh snow, now covering older snowdrift accumulations down to the timberline. The snowpack is being weakened by faceted crystals; at ground level there is also depth hoar, which is weakening the snowpack still further. Between Monday and Tuesday, more surface hoar has been generated.

Weather

On Wednesday, temperatures will rise another notch. Sunshine will prevail, except for cirrus clouds passing through at high altitude. Due to the relatively dry air masses, outstanding visibility will prevail. At 2000 m, temperatures above zero are expected. Winds will be brisk from the southwest.

Outlook

Avalanche danger is expected to gradually decrease.

Avalanche problems



Danger ratings

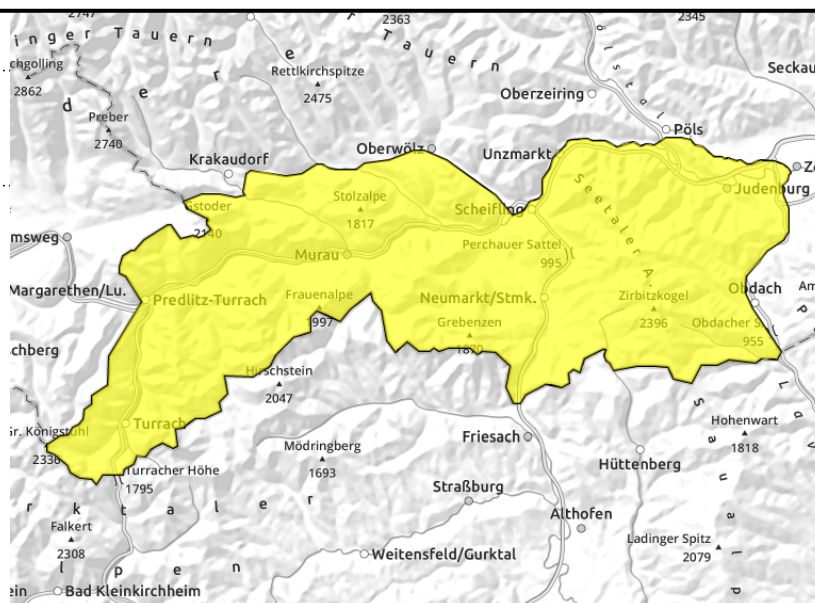
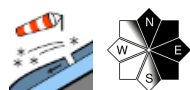


Expositions



20.01.2021

Gurktaler Alpen, Seetaler Alpen



Snowdrift problem. Moderate avalanche danger.

In Gurktal and Seetal Alps, moderate avalanche danger continues to prevail. Fresh, shallow snowdrift accumulations are poorly bonded with the snowpack fundament beneath them. Avalanche prone locations are small, occur in ridgeilne terrain, particularly in E-S aspects. Triggering slab avalanches is possible even by minimum additional loading. The SW winds will deposit new drifts on north and east-facing slopes during the daytime.

Snowpack structure

The snowdrift accumulations were deposited on surface hoar or atop an expansively metamorphosed and thereby weakened layer of snow. The snowpack fundament is generally stable. On Monday night, surface hoar formed.

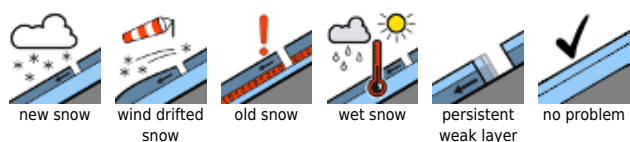
Weather

On Wednesday the temperatures will continue to rise. Increased sunshine will reign, only high-altitude cirrus clouds will pass through. Due to the relatively dry air masses, visibility will be good. Winds will intensify and blow intermittently at storm strength. At 2000 m, 0 degrees.

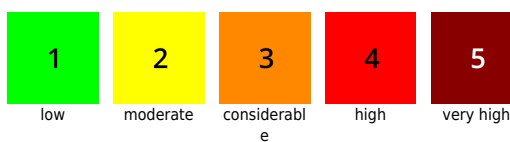
Outlook

Avalanche danger will decrease.

Avalanche problems



Danger ratings

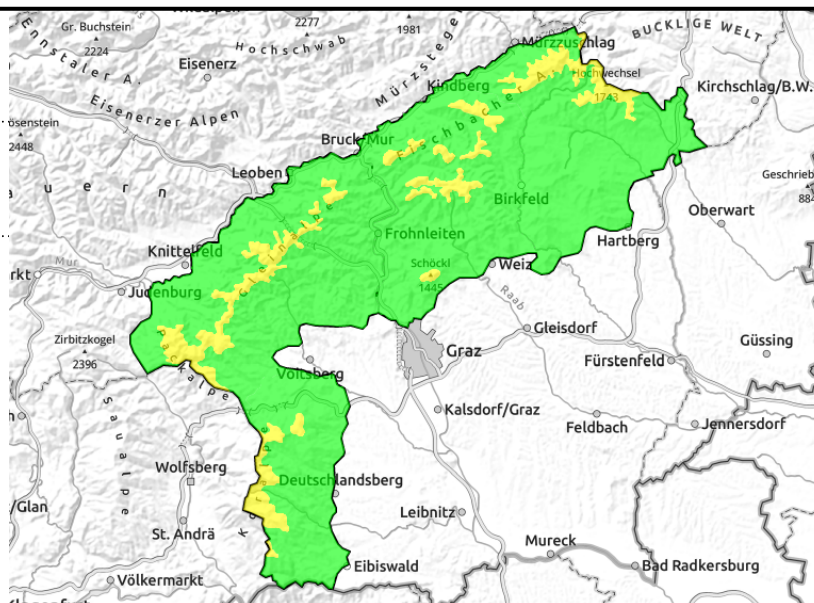
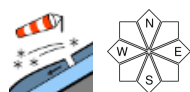


Expositions



20.01.2021

Koralpe, Stub- und Gleinalpe, Westliche Fischbacher Alpen und Grazer Bergland, Östliche Fischbacher Alpen und Wechselgebiet



Fresh snowfall - moderate avalanche danger

From Koralpe over Graz mountains as far as the Wechsel, moderate avalanche danger prevails above the treeline. Fresh snowdrifts from Tuesday were deposited in east and south aspects in ridgeline terrain. Triggering a slab avalanche is generally possible by large additional loading. The SW winds will generate snowdrifts during the day and deposit them on north-facing slopes.

Snowpack structure

Fresh snowdrifts were deposited on top of a weakened snowpack fundament, due to its expansive metamorphosis, with soft layers of faceted crystals. Only in the regions where snowfall was heaviest in the furthestmost south (Koralpe) is the fundament largely stable. Faceted snow crystals have created a weak layer over widespread areas. At intermediate altitudes the snowpack was able to settle.

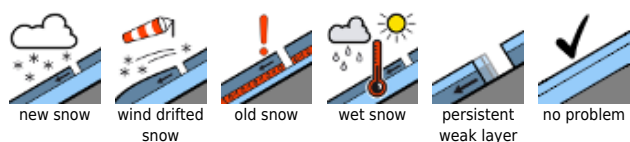
Weather

On Wednesday the temperatures will continue to rise. Compared to the last few days, there will be frequent sunshine, only high-altitude cirrus clouds will pass through. Due to relatively dry air masses, outstanding visibility will prevail. Winds will intensify, gusts reaching storm strength from Zirbitzkogel as far as Koralpe. At 2000 m, 0 degrees.

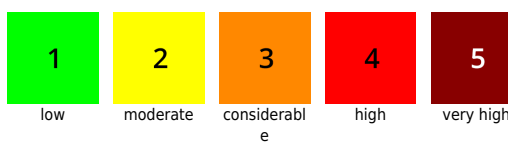
Outlook

Avalanche danger levels will gradually diminish.

Avalanche problems



Danger ratings



Expositions

