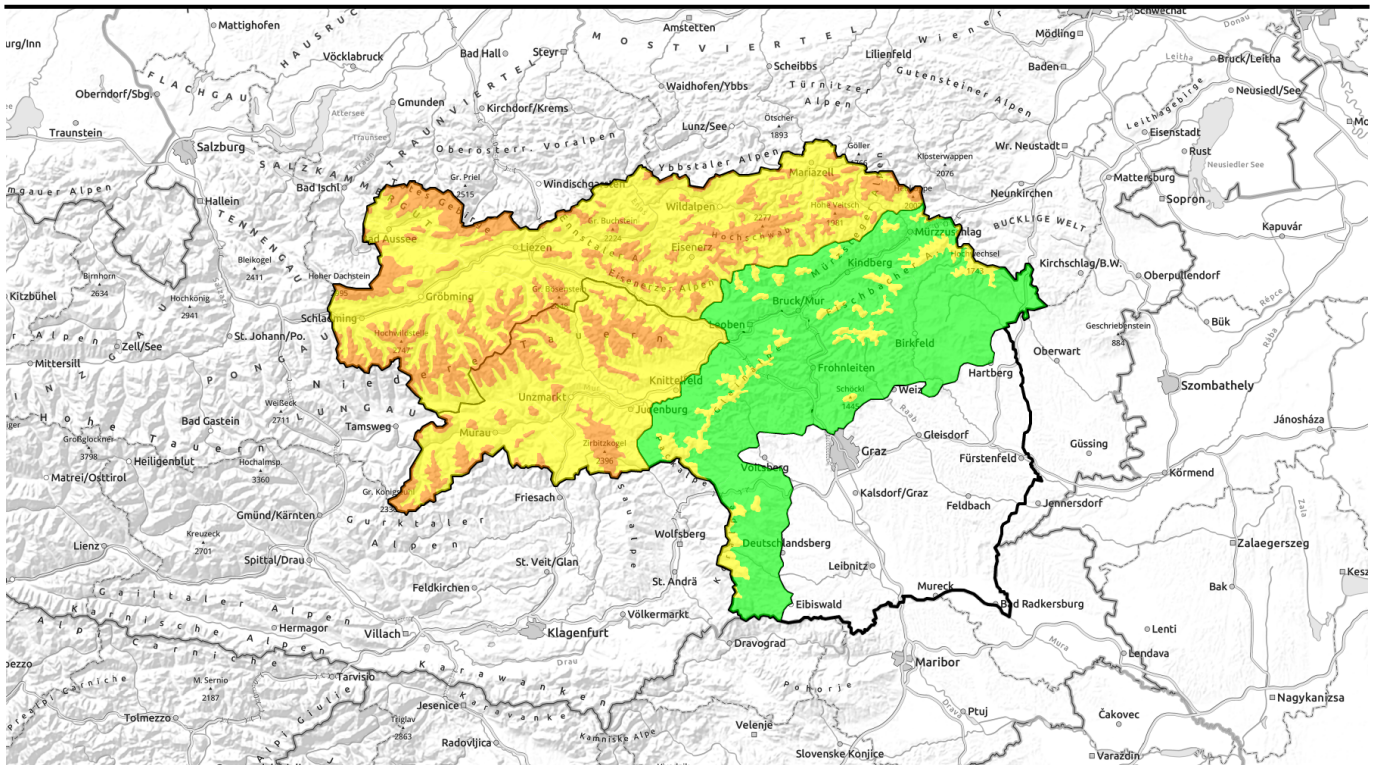


15.01.2021 through 16.01.2021

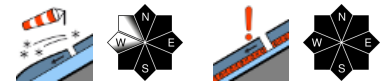


Fresh snowdrifts creating treacherous conditions down to treeline



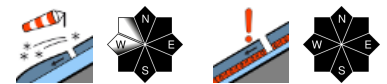
1400 m

Dachsteingebiet, Totes Gebirge, Schladminger Tauern, Nördliche Wölzer Tauern, Rottenmanner Tauern, Ennstaler Alpen, Eisenerzer Alpen, Mürtzsteger Alpen, Hochschwabgebiet



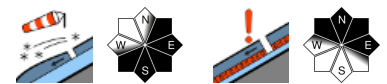
1400 m

Gurktaler Alpen, Südliche Wölzer Tauern, Seckauer Tauern, Seetaler Alpen



1400 m

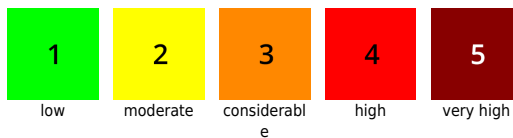
Koralpe, Stub- und Gleinalpe, Westliche Fischbacher Alpen und Grazer Bergland, Östliche Fischbacher Alpen und Wechselgebiet, Mürtztaler Alpen



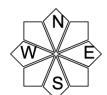
Avalanche problems



Danger ratings



Expositions



15.01.2021 through 16.01.2021

Dachsteingebiet, Totes Gebirge, Schladminger Tauern, Nördliche Wölzer Tauern, Rottenmanner Tauern, Ennstaler Alpen, Eisenerzer Alpen, Mürzsteiger Alpen, Hochschwabgebiet



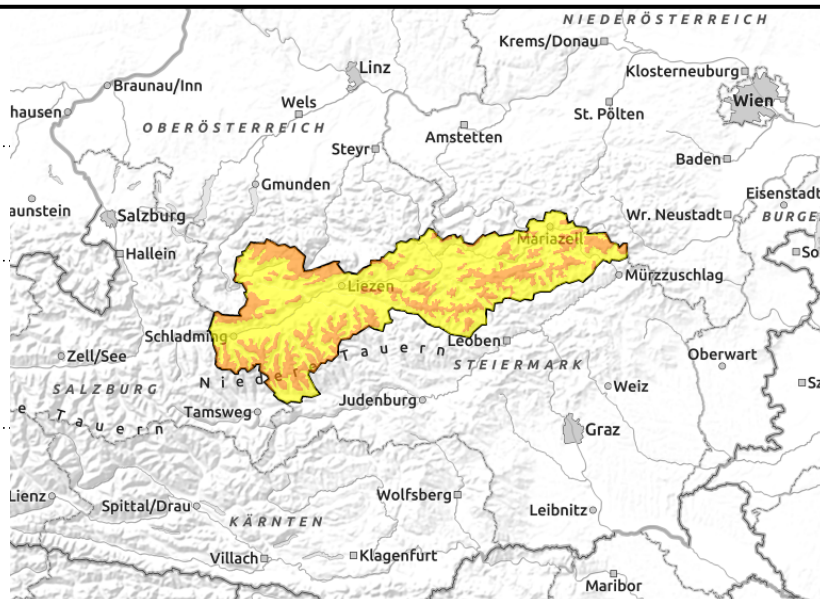
1400 m



Near to and distant from ridgelines, behind protruberances, at forest edges, in wooded lanes



Above timberline



Considerable avalanche danger, delicate conditions down to treeline

At intermediate and high altitudes, avalanche danger is considerable from fresh snowdrifts which are very poorly bonded with the snowpack fundament. Avalanche prone locations are found not only near to, but also distant from ridgelines down to wooded zones and in general at entries to gullies and bowls, and behind abrupt changes in the terrain. Triggering a slab avalanche is possible even by the weight of one single skier, and the avalanches which are released can grow to large size. Danger zones are not easy to recognize, since they are covered by snowdrifts in many places.

Snowpack structure

Since Monday evening there has been up to 80 cm of fresh snow registered, deposited on a shallow and weakened (by expansive metamorphosis) snowpack fundament, full of faceted crystals and depth hoar. In some places, surface hoar is providing an additional weak layer between old and fresh snow. The fresh snow has been transported intensively to east and south-facing slopes, it contains graupel and its bonding with the base is very poor. Also inside the fresh drifts themselves, there are weak layers.

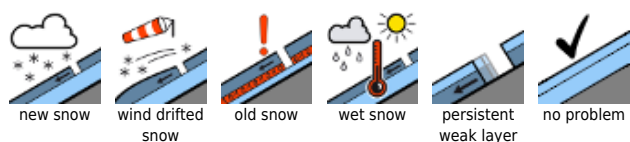
Weather

In the mountains of northern Styria, another 10-15 cm of fresh snow is anticipated by Saturday morning, accompanied by strong NW winds. Although the wind will remain strong, the snowfall is expected to slacken off during the afternoon. Low lying clouds will hamper visibility in summit regions. Temperatures will remain low: at 2000 m, -14 degrees.

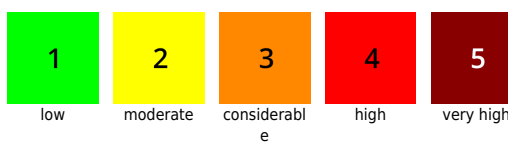
Outlook

Sunday will begin without precipitation. During the daytime, snowfall will set in from the west. Avalanche danger is not expected to change significantly.

Avalanche problems



Danger ratings

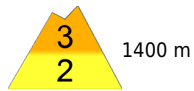


Expositions



15.01.2021 through 16.01.2021

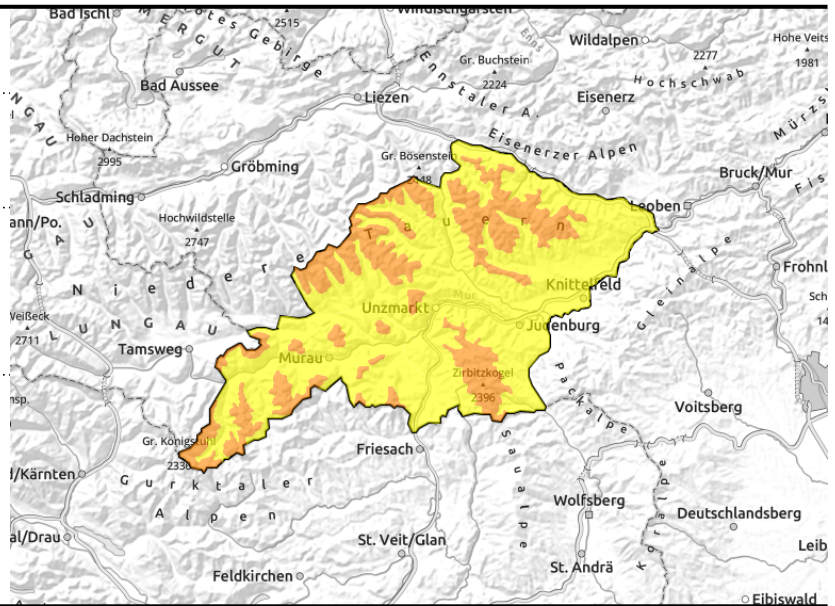
Gurktaler Alpen, Südliche Wölzer Tauern, Seckauer Tauern, Seetaler Alpen



Near to and distant from ridgelines, behind protruberances, at forest edges, in wooded lanes



Above timberline



Considerable avalanche danger, delicate conditions down to forested zones

At intermediate and high altitudes, avalanche danger is considerable from fresh snowdrifts which are very poorly bonded with the snowpack fundament. Avalanche prone locations are found not only near to, but also distant from ridgelines down to wooded zones and in general at entries to gullies and bowls, and behind abrupt changes in the terrain. Triggering a slab avalanche is possible even by the weight of one single skier, and the avalanches which are released can grow to large size. Danger zones are not easy to recognize, since they are covered by snowdrifts in many places.

Snowpack structure

Since Monday evening there has been up to 40 cm of fresh snow registered, deposited on a shallow and weakened (by expansive metamorphosis) snowpack fundament, full of faceted crystals and depth hoar. Only in the furthestmost southern regions where there has been great snowfall is the fundament largely stable. In some places, surface hoar is providing an additional weak layer between old and fresh snow. The fresh snow has been transported intensively to east and south-facing slopes, its bonding with the base is very poor.

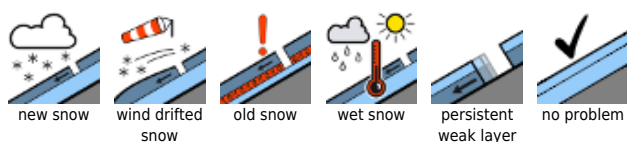
Weather

South of the Main Alpine Ridge the snowfall in the north extends only to a minimum degree, most regions have not precipitation and sunshine is intermittent. Hindered visibility will be possible. Winds will be strong from the northwest. Temperatures will remain low: at 2000 m, -14 degrees.

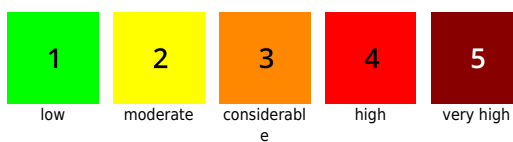
Outlook

Sunday will begin without precipitation. During the daytime, snowfall will set in from the west. Avalanche danger is not expected to change significantly.

Avalanche problems



Danger ratings

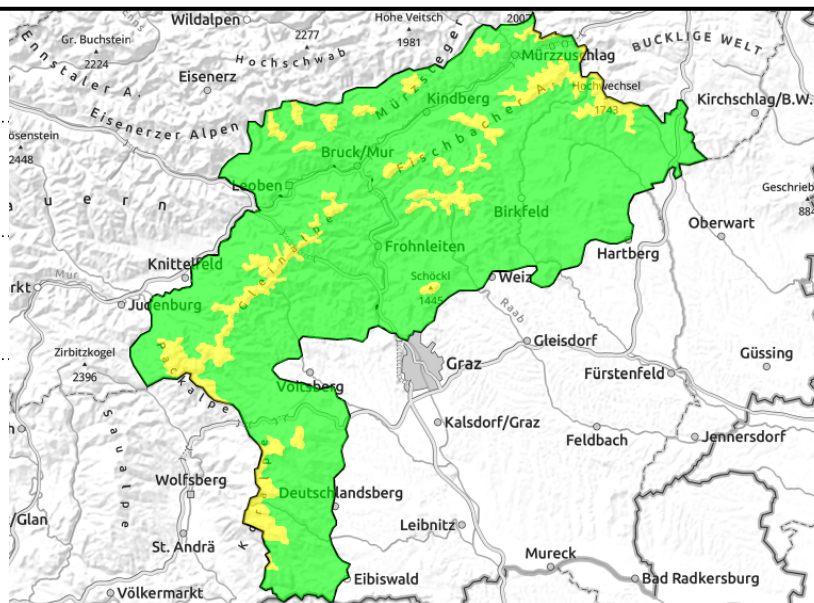
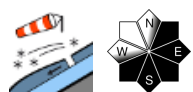


Expositions



15.01.2021 through 16.01.2021

Koralpe, Stub- und Gleinalpe, Westliche Fischbacher Alpen und Grazer Bergland, Östliche Fischbacher Alpen und Wechselgebiet, Mürztaler Alpen



Snowdrifts down to forested zones. Moderate avalanche danger.

At intermediate and high altitudes, moderate avalanche danger prevails from fresh snowdrifts which are poorly bonded to the snowpack fundament. Avalanche prone locations are small, but both near to and distant from ridgelines down to forested zones and in generaly at entries to gulliees and bowls. Triggering a slab avalanche is possible even by minimum additional loading, but only small-to-medium sized releases are to be expected.

Snowpack structure

Since Tuesday there has been 20 cm of fresh snow registered, deposited on an expansively metamorphosed (faceted) snowpack which is thereby weakened. Surface hoar has created a weak layer between the old and fresh snow. The fresh snow was intensively transported to east and south-facing slopes; bonding to the base beneath the deposited drifts is very poor.

Weather

In the rimline ranges there will be largely no precipitation and occasional sunshine is possible. Hindered visibility in summit zones is possible. Winds will be strong from the northwest. Temperatures will remain low: at 2000 m, -14 degrees.

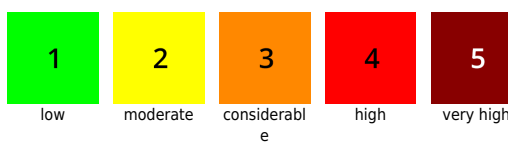
Outlook

Sunday will begin without precipitation. During the daytime, snowfall will set in from the west. Avalanche danger is not expected to change significantly.

Avalanche problems



Danger ratings



Expositions

