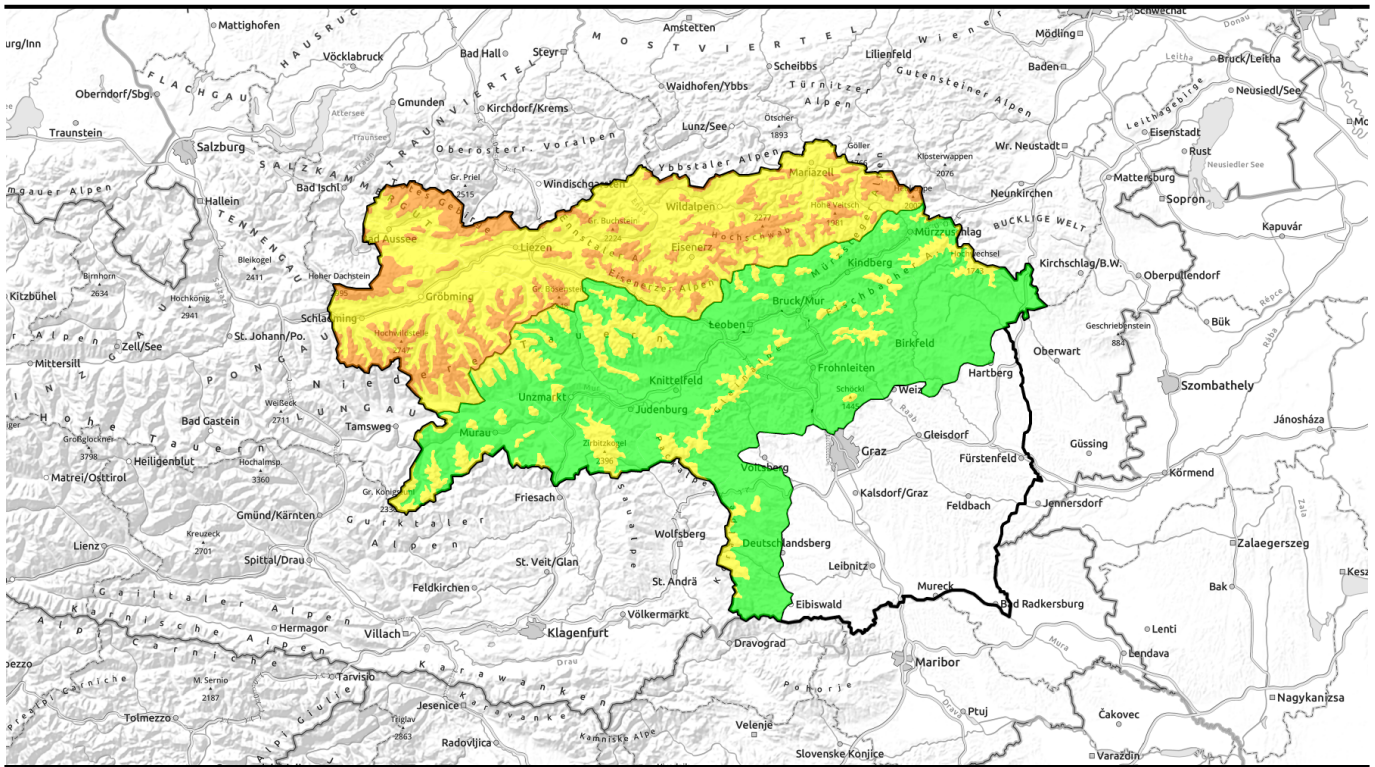


13.01.2021 until 14.01.2021

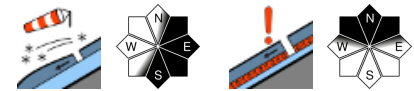


Storm-strength winds+fresh snow creating treacherous conditions in Styria's mountains



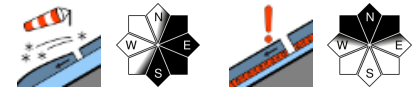
forestline

Totes Gebirge, Dachsteingebiet, Ennstaler Alpen, Hochschwabgebiet, Mürzsteiger Alpen, Rottenmanner Tauern, Nördliche Wölzer Tauern, Schladminger Tauern, Eisenerzer Alpen



forestline

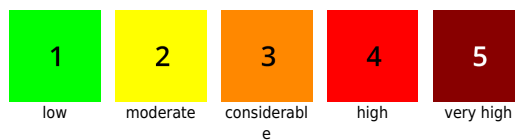
Gurktaler Alpen, Südliche Wölzer Tauern, Seckauer Tauern, Mürztaler Alpen, Östliche Fischbacher Alpen und Wechselgebiet, Westliche Fischbacher Alpen und Grazer Bergland, Stub- und Gleinalpe, Koralpe, Seetaler Alpen



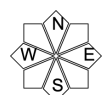
Avalanche problems



Danger ratings



Expositions



13.01.2021 until 14.01.2021

Totes Gebirge, Dachsteingebiet, Ennstaler Alpen, Hochschwabgebiet, Mürzsteger Alpen, Rottenmanner Tauern, Nördliche Wölzer Tauern, Schladminger Tauern, Eisenerzer Alpen



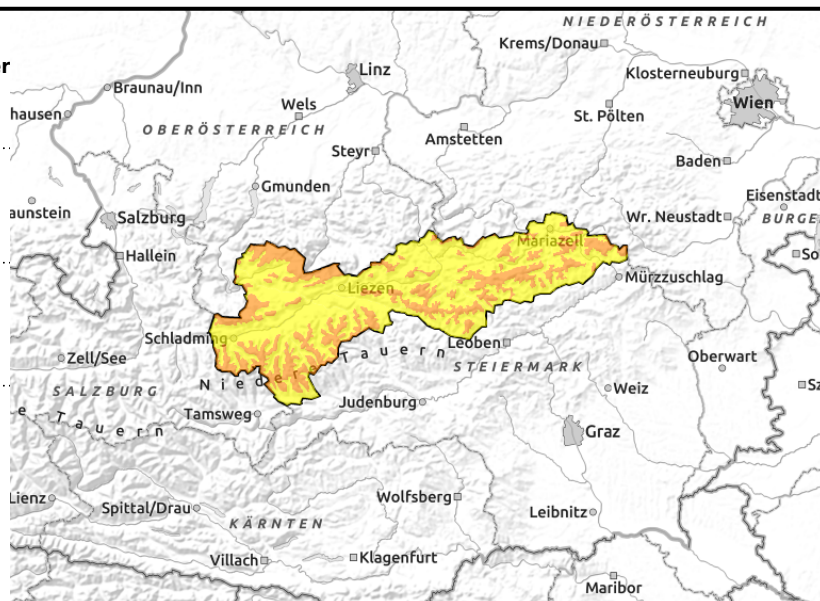
forestline



Unfavourable snow base



On north-facing slopes



Considerable avalanche danger at high altitudes due to fresh snowdrifts

At high altitudes, considerable avalanche danger prevails due to freshly generated snowdrifts which are bonding poorly with the snowpack fundament. Avalanche prone locations are found both near to and distant from ridgelines on E-S slopes and in general at entries to gullies and bowls. Wherever fresh snowdrifts have been deposited, it is possible to trigger a slab avalanche even by minimum additional loading. Assessing the dangers is made more difficult by poor visibility. At lower altitudes, avalanche danger is moderate (due to lack of snow) but even here, fresh snowdrifts need to be viewed as danger zones.

Snowpack structure

Since Monday evening there has been up to 35 cm of fresh snow registered, deposited atop a shallow, expansively metamorphoses and thereby weakened snowpack fundament, with faceted crystals and depth hoar. Surface hoar over widespread areas have created a weak layer between the old and the fresh snow. On Thursday, an additional 20 cm of fresh snow is expected. The fresh snow was and is still being transported to east and south-facing slopes; its bonding with the snow base is poor.

Weather

Thursday will be thoroughly wintery, with snowfall in the northern barrier cloud regions and storm-strength W/NW winds. Temperature at 2000 m: -12 degrees, the summits will often be shrouded in clouds, and visibility will be limited.

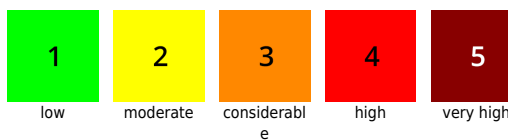
Outlook

On Friday, weather conditions will improve and it will turn increasingly sunny. The NW winds will slacken off, but it will remain wintery cold and the snowdrift problem will persist. Avalanche danger levels are not expected to change significantly.

Avalanche problems



Danger ratings

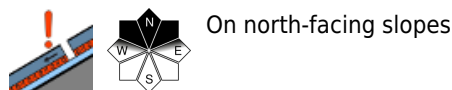
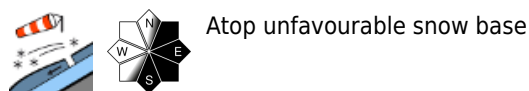
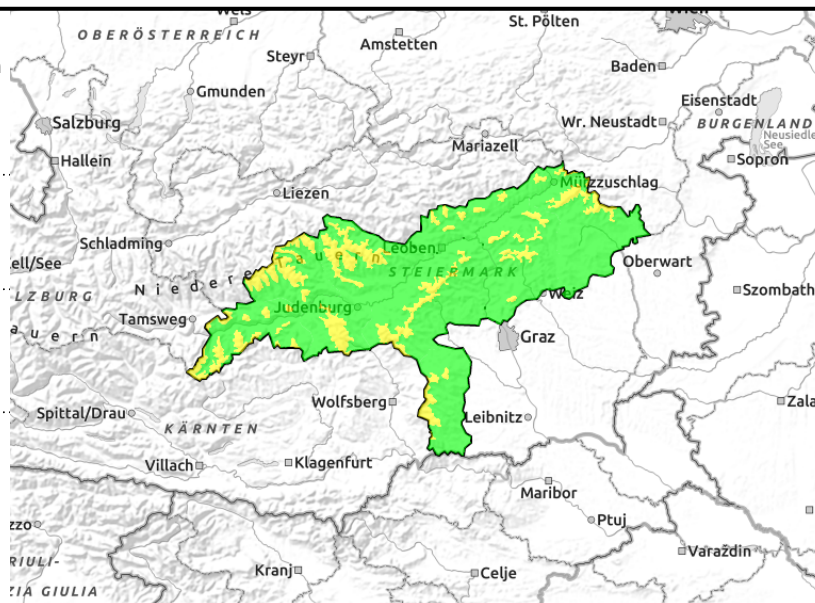


Expositions



13.01.2021 until 14.01.2021

Gurktaler Alpen, Südliche Wölzer Tauern, Seckauer Tauern, Mürztaler Alpen, Östliche Fischbacher Alpen und Wechselgebiet, Westliche Fischbacher Alpen und Grazer Bergland, Stub- und Gleinalpe, Koralpe, Seetaler Alpen



Moderate avalanche danger at high altitudes due to fresh snowdrifts

At high altitudes, considerable avalanche danger prevails due to freshly generated snowdrifts which are bonding poorly with the snowpack fundament. Avalanche prone locations are found primarily on E-S slopes and in general at entries to gullies and bowls and in general behind protruberances and at entries to gullies and bowls. Wherever fresh snowdrifts have been deposited, it is possible to trigger a slab avalanche even by minimum additional loading.

Snowpack structure

South of the Main Alpine Ridge in the regions where there is less snow on shady slopes the snowpack fundament has been weakened by expansive metamorphosis. In the regions where there is lots of snow, the fundament is stable by and large. In both cases, however, there has been expansive spread of surface hoar. Since Tuesday, storm-strength NW winds and light snowfall have generated small-sized snowdrift accumulations on east and south-facing slopes which are poorly bonded with the snow base beneath them.

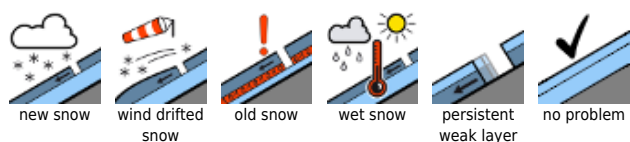
Weather

South of the Main Alpine Ridge, variable weather conditions are expected on Thursday, with a mixture of clouds, minor snow showers and sunny phases. Winds will continue to be blowing at storm strength from the northwest. Temperature at 2000 m, -11 degrees.

Outlook

On Friday, weather conditions will improve, it will turn increasingly sunny. The NW winds will slacken off, but it will remain wintery cold. The snowdrift problem will persist. Avalanche danger levels are not expected to change significantly.

Avalanche problems



Danger ratings



Expositions

