

**Gurktal Alps have the most snow: considerable danger. In north, snowdrift problem: moderate danger.**

	<p>timberline</p>	<p>Gurktaler Alpen</p>		
	<p>timberline</p>	<p>Seckauer Tauern, Westliche Fischbacher Alpen und Grazer Bergland, Mürztaler Alpen, Stub- und Gleinalpe, Korralpe, Seetaler Alpen, Östliche Fischbacher Alpen und Wechselgebiet, Südliche Wölzer Tauern</p>		
	<p>timberline</p>	<p>Hochschwabgebiet, Schladminger Tauern, Nördliche Wölzer Tauern, Rottenmanner Tauern, Ennstaler Alpen, Eisenerzer Alpen, Mürzsteger Alpen, Dachsteingebiet, Totes Gebirge</p>		

**Avalanche problems**



**Danger ratings**

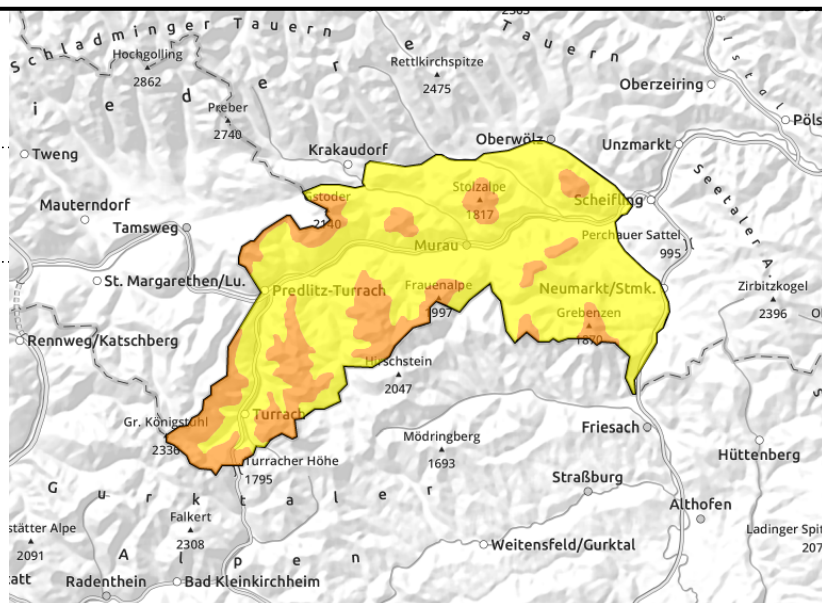
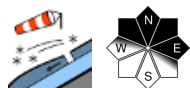


**Expositions**



## Region report

### Gurktaler Alpen



## The Styrian region with currently the most snow. Avalanche prone locations are found on high-altitude shady slopes. Snowdrift problem

As a result of stormy southerly winds plus fresh snow, trigger-sensitive snowdrifts were generated over the weekend. Above the treeline, avalanche danger is considerable. This applies particularly to N/E aspects, danger zones occur primarily in wind-loaded gullies and bowls, and lee slopes behind abrupt changes in the terrain. Slab avalanches can be triggered even by minimum additional loading. Caution urged towards cornices! They are not stable.

### Snowpack structure

Over the weekend, another 30 cm of fresh snow was registered, this was **cold snow** in the summit regions and it was transported to **shady slopes**. The drifts now cover **older powder snow and surface hoar** (formed Thursday/Friday).

### Weather

In Gurktal Alps, frequent sunshine. In the afternoon, clouds will increase from the south, some snowfall is anticipated during the nighttime hours (up to 15 cm at high altitudes). Winds will be light to moderate from the southwest. At 2000 m: -5 degrees.

### Outlook

Avalanche danger levels are not expected to change significantly.

#### Avalanche problems



#### Danger ratings

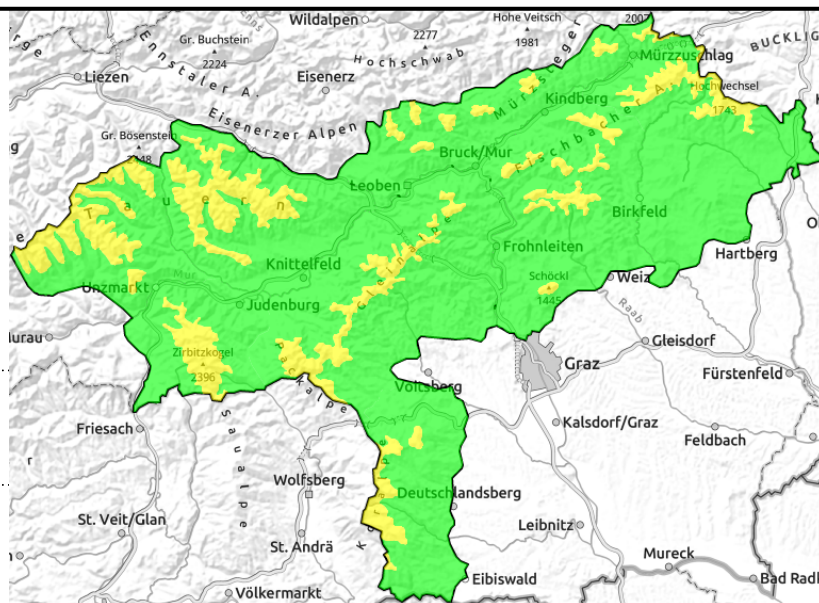


#### Expositions



## Region report

**Seckauer Tauern, Westliche Fischbacher Alpen und Grazer Bergland, Mürztaler Alpen, Stub- und Gleinalpe, Koralpe, Seetaler Alpen, Östliche Fischbacher Alpen und Wechselgebiet, Südliche Wölzer Tauern**



## Snowdrift problem above treeline

As a result of stormy southerly winds plus fresh snow, trigger-sensitive snowdrifts were generated over the weekend. This applies particularly to N/E aspects, danger zones occur primarily in wind-loaded gullies and bowls, and lee slopes behind abrupt changes in the terrain. Slab avalanches can be triggered even by minimum additional loading.

## Snowpack structure

Snowdrifts on high-altitude shady slopes have not yet settled. Weak layers embedded deeper down have formed during this period of precipitation. At intermediate and lower altitudes, the snowpack is stable.

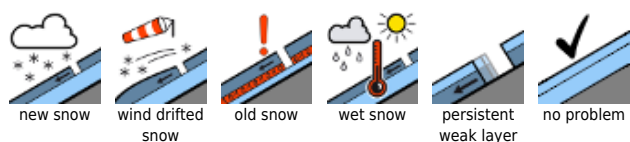
## Weather

From Koralpe to the Wechsel, sunshine will be frequent. Along the rimline ranges there will be fog below about 1000 m. In the latter part of the day, clouds will increase from the south, followed by a bit of fresh snow (up to 10 cm at high altitudes). Winds will be light to moderate from the southwest. At 2000 m: -5 degrees.

## Outlook

Avalanche danger levels are not expected to change significantly.

### Avalanche problems



### Danger ratings

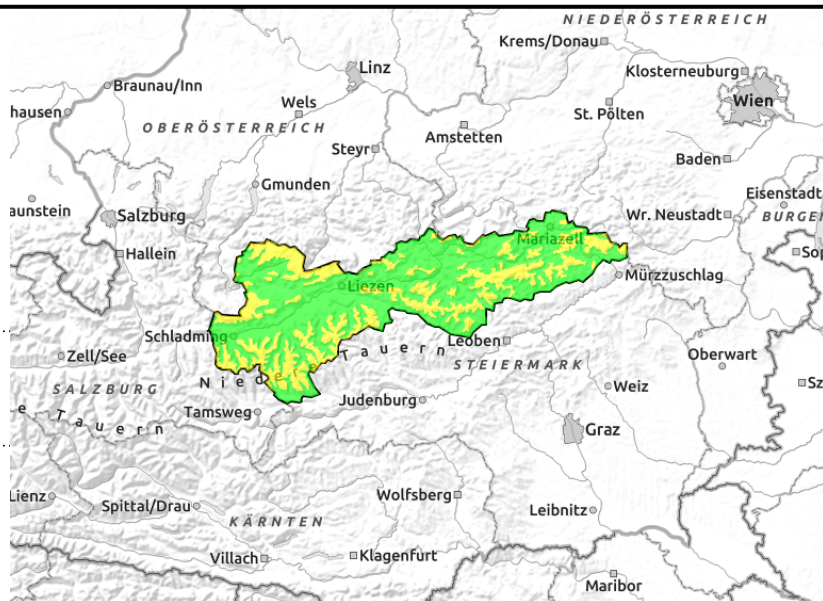
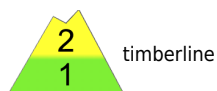


### Expositions



## Region report

**Hochschwabgebiet, Schladminger Tauern, Nördliche Wölzer Tauern, Rottenmanner Tauern, Ennstaler Alpen, Eisenerzer Alpen, Mürzsteger Alpen, Dachsteingebiet, Totes Gebirge**



## Little snow, most avalanche prone locations occur in shady-slope gullies and bowls.

As a result of stormy southerly winds plus fresh snow, trigger-sensitive snowdrifts were generated over the weekend. This applies particularly to N/E aspects, danger zones occur primarily in wind-loaded gullies and bowls, and lee slopes behind abrupt changes in the terrain. Slab avalanches can be triggered even by minimum additional loading.

### Snowpack structure

Adequate snow is found only in gullies and bowls, for the most part, where weak (soft, intermediate) layers have often formed inside the snowdrifts amid varying winds. On high-altitude shady slopes, the shallow snowpack is currently metamorphosing into depth hoar.

### Weather

On Tuesday in the northern regions of Styria, sunshine. Towards evening, clouds will increase from the south, during the night some snowfall is expected. By Wednesday, 5-10 cm of fresh snow is anticipated. Winds will be moderate from the southwest. At 2000m, -6 degrees.

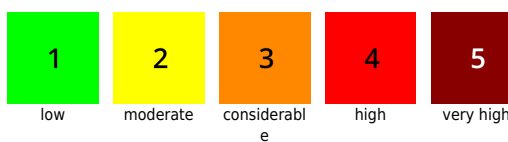
### Outlook

On Wednesday morning, still some snowfall. Avalanche danger levels are not expected to change significantly.

#### Avalanche problems



#### Danger ratings



#### Expositions

