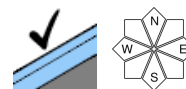


Christmas thaw! Temperatures will drop during the night of Christmas Eve. Some fresh snow in northern barrier cloud regions.



Südliche Wölzer Tauern, Seckauer Tauern, Gurktaler Alpen, Seetaler Alpen, Stub- und Gleinalpe, Koralpe, Schladminger Tauern



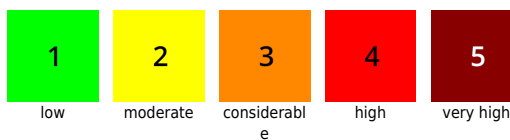
Dachsteingebiet, Totes Gebirge, Nördliche Wölzer Tauern, Rottenmanner Tauern, Ennstaler Alpen, Hochschwabgebiet, Mürzsteiger Alpen, Eisenerzer Alpen



Avalanche problems



Danger ratings



Expositions

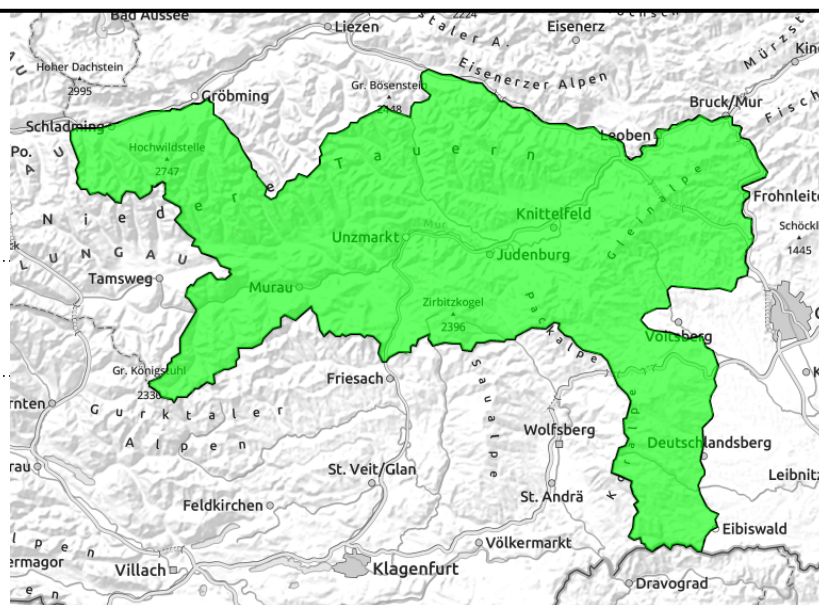


Region report

Südliche Wölzer Tauern, Seckauer Tauern, Gurktaler Alpen, Seetaler Alpen, Stub- und Gleinalpe, Korralpe, Schladminger Tauern



Favourable snowpack layering.



Favourable backcountry touring conditions

In the regions of the Gurktal Alps and southern flank of Schladminger Tauern where snowfall has been heaviest, very isolated wet-snow slides are possible in steep terrain.

Snowpack structure

Due to extremely mild temperatures during the “Christmas Thaw” the snowpack is moistened, but has settled. As a result of significantly lower temperatures over the course of the day, the snowpack surface will develop a melt-freeze crust.

Weather

On Christmas Eve, the Eastern Alps are caught in a westerly high-altitude current with mild air masses. A cold front, in weakened form, will reach us in the evening, including the southern mountain ranges. Summits will be shrouded in fog during the daytime, intermittent light rainfall is possible. By evening snowfall is possible down to about 1200 m. Winds will intensify, shift from westerly to northwesterly. Temperatures will recede to -3 degrees at 2000 m, to 0 degrees at 1500 m.

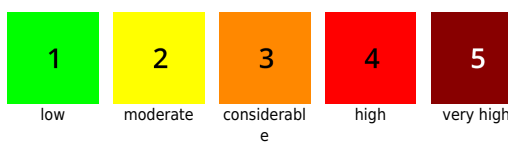
Outlook

On Christmas Day, heavy cloud cover will persist, snowfall will be intermittent down to about 600 m, and a cold NW wind will be blowing. On Boxing Day, 26 December, quite cold and windy but sunny conditions are expected. No significant change in avalanche danger is expected.

Avalanche problems



Danger ratings



Expositions



Region report

Dachsteingebiet, Totes Gebirge, Nördliche Wölzer Tauern, Rottenmanner Tauern, Ennstaler Alpen, Hochschwabgebiet, Mürzsteger Alpen, Eisenerzer Alpen



Very few danger spots in outlying terrain

Little snow, except at high altitudes in Dachstein region

Small snowdrift accumulations will be generated during the daytime in high altitude Dachstein and Schladminger Tauern terrain, particularly on east and north-facing slopes and near ridgelines. But there is no weak layer, thus, the snowdrifts can hardly be triggered.

Snowpack structure

Along the Northern Alps and on the northern flank of the Niedere Tauern, far too little snow for this juncture of the season. Rainfall up to high altitudes has softened the snow, high temperatures had a further impact. The moist fresh snow has bonded well with the snowpack beneath it.

Weather

On Christmas Eve, the Eastern Alps will remain in the grips of a westerly high-altitude current of mild air. During the evening, a cold front will cause temperatures to drop slowly. Summits will be shrouded in fog on Christmas Day, initially light rainfall, then snowfall down to about 1000 m by evening. Winds will intensify, shift from westerly to northwesterly. Temperatures will drop to -4 degrees at 2000 m, to -1 degree at 1500 m.

Outlook

On Christmas Day, snowfall down to low lying areas, accompanied by cold NW winds. On Boxing Day, 26 December, the snow showers will come to an end, clouds slowly disperse. It will remain cold, strong NW winds will prevail. Between Dachstein and Hochschwab, as much as 20 cm of fresh snow can be expected over the holidays, deposited atop a moist, shallow old snowpack. The bonding will initially be good. Not much change in avalanche danger.

Avalanche problems



new snow



wind drifted snow



old snow



wet snow



persistent weak layer



no problem

Danger ratings



1

low



2

moderate



3

considerable



4

high



5

very high

Expositions

