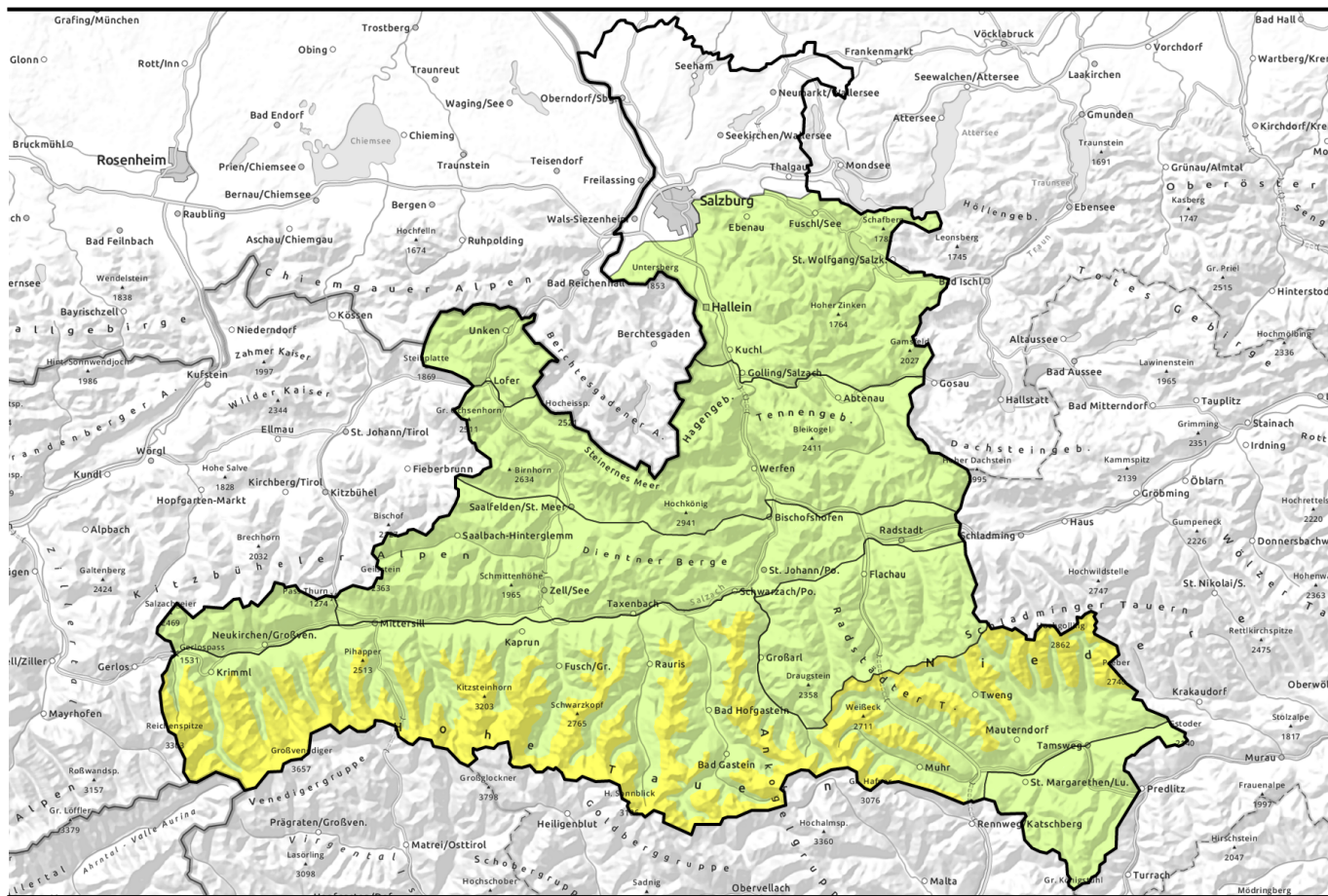


morning



Springtime situation + persistent weak layer at high altitudes

	Kitzbüheler Alpen, Glemmtal, Dientner Grasberge, Pongauer Grasberge, Osterhorngruppe, Gamsfeldgruppe, Untersbergstock, Chiemgauer Alpen, Heutal, Reiteralpe	
	Loferer und Leoganger Steinberge, Steinernes Meer, Hochkönig, Hagengebirge, Göllstock, Tennengebirge, Gosaukamm, Oberpinzgauer Grasberge, Niedere Tauern Nord, Niedere Tauern Alpenhauptkamm	
	Nockberge	
	2200 m Großvenedigergruppe Alpenhauptkamm, Glocknergruppe Alpenhauptkamm, Goldberggruppe Alpenhauptkamm, Ankogelgruppe, Muhr, Glocknergruppe Nord, Großvenedigergruppe Nord, Niedere Tauern Süd, Goldberggruppe Nord	

Avalanche problems



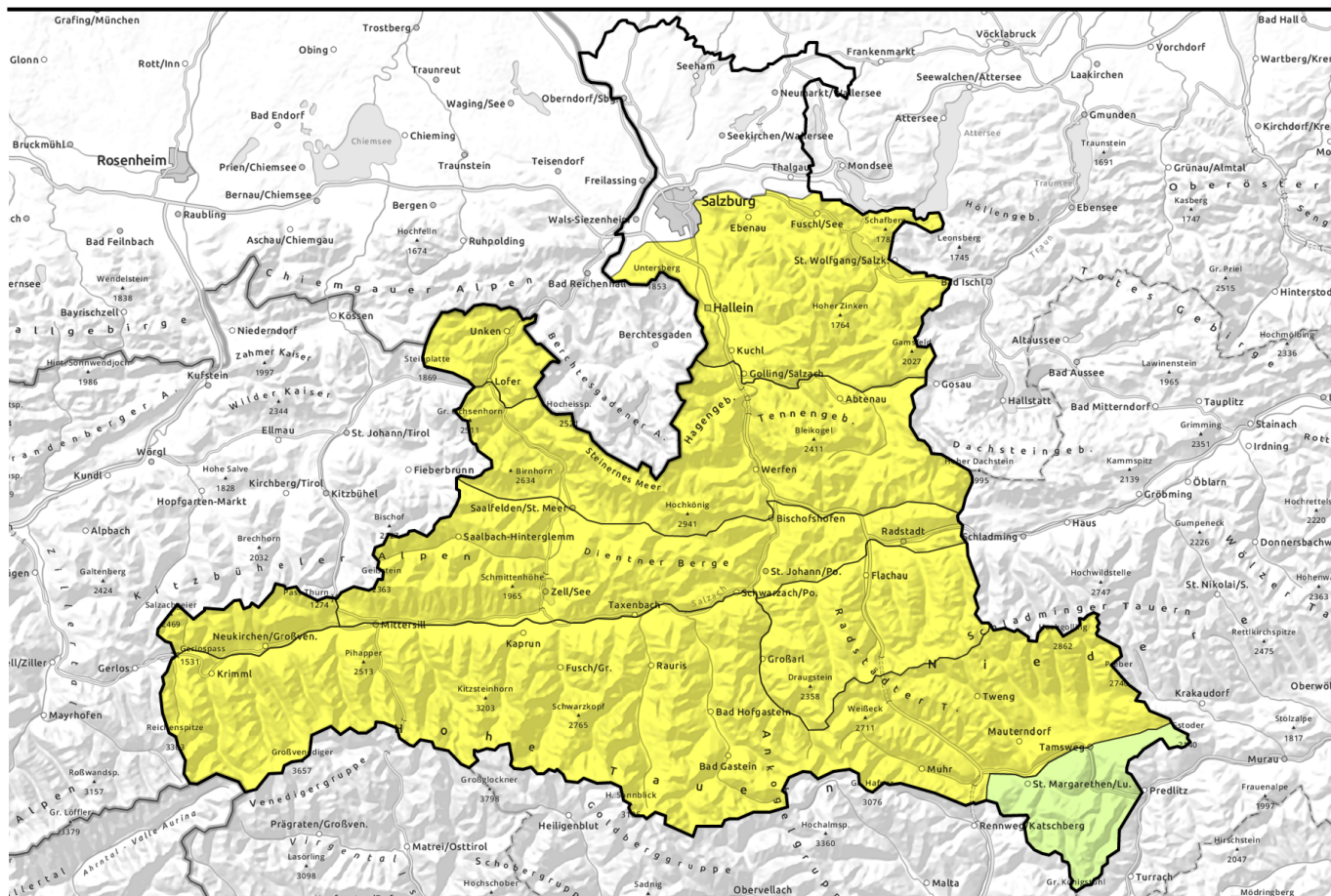
Danger ratings



Expositions



afternoon



Frühjahrssituation mit Altschneeproblem in den Hochlagen

	Kitzbüheler Alpen, Glemmtal, Dientner Grasberge, Pongauer Grasberge, Osterhorngruppe, Gamsfeldgruppe, Untersbergstock, Chiemgauer Alpen, Heutal, Reiteralpe	
	Loferer und Leoganger Steinberge, Steinernes Meer, Hochkönig, Hagengebirge, Göllstock, Tennengebirge, Gosaukamm, Oberpinzgauer Grasberge, Niedere Tauern Nord, Niedere Tauern Alpenhauptkamm	
	Nockberge	
	Großvenedigergruppe Alpenhauptkamm, Glocknergruppe Alpenhauptkamm, Goldberggruppe Alpenhauptkamm, Ankogelgruppe, Muhr, Glocknergruppe Nord, Großvenedigergruppe Nord, Niedere Tauern Süd, Goldberggruppe Nord	

Avalanche problems



Danger ratings



Expositions



morning

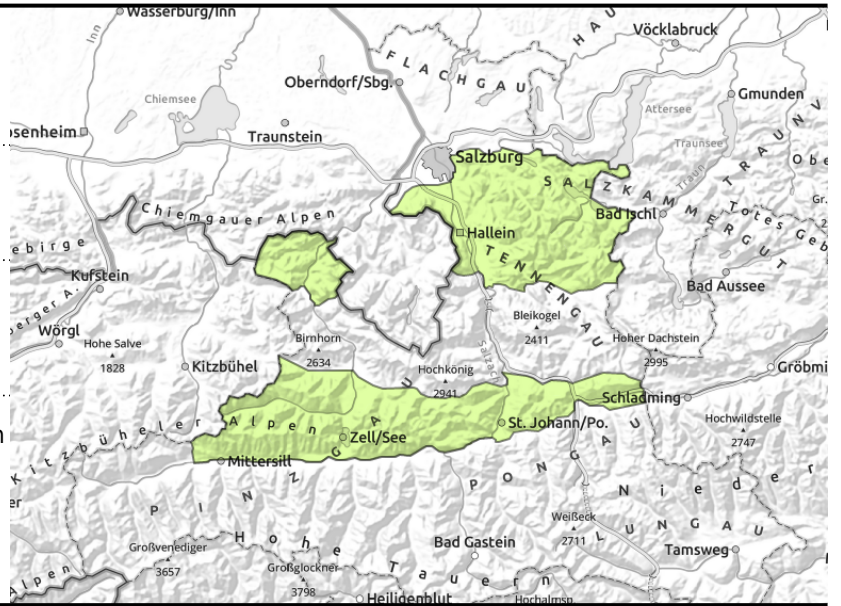
Kitzbüheler Alpen, Glemmtal, Dientner Grasberge, Pongauer Grasberge, Osterhorngruppe, Gamsfeldgruppe, Untersbergstock, Chiemgauer Alpen, Heutal, Reiteralpe



on extremely steep grass-covered slopes, esp. where slopes were previously bare



increasing wet-snow activity on south-facing slopes in morning



Glide-snow avalanches on extremely steep grass-covered slopes and naturally triggered wet-snow activity during daytime

Avalanche danger rises to MODERATE during the course of the day.

Where snow is sufficient, small glide-snow avalanches can release naturally cases in extremely steep terrain (>40°), especially where the ground was previously bare of snow. Avoid zones below glide cracks.

Due to solar radiation and warmth, the snowpack becomes increasingly moist, and naturally triggered avalanche activity increases during the course of the day, releases mostly small.

Snowpack structure

Solar radiation makes the snowpack wet, it loses its firmness. On steep rocky slopes which have again been snow on and grassy slopes, the snowpack is wet down to the ground and can glide away. The recent fresh fallen snow is quickly diminishing due to melting.

Weather

Friday night, skies will be clear.

On Saturday frequent sunshine, good visibility. Winds light to moderate from the south. At 2000 m: 0 to 3 degrees.

Outlook

Classic springtime, danger potential is receding due to the natural melting process.

Avalanche problems



Danger ratings



Expositions



afternoon

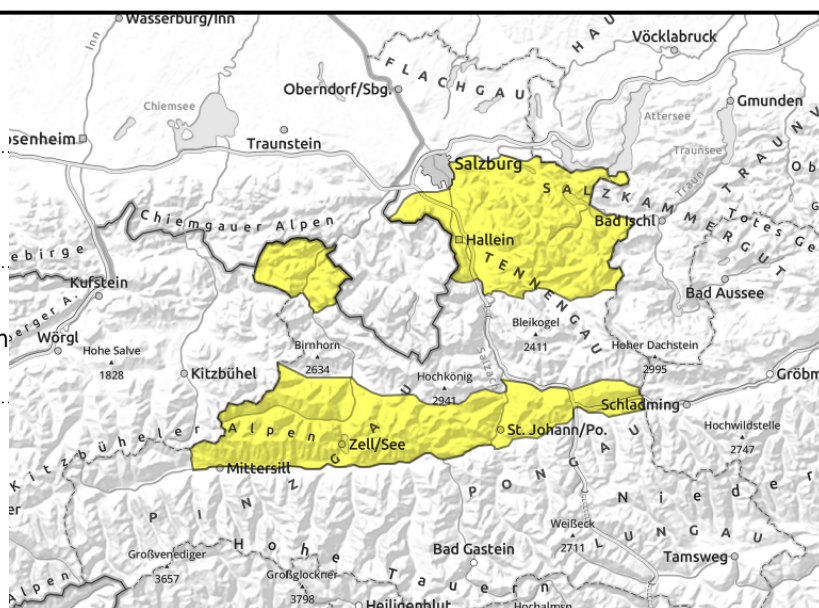
Kitzbüheler Alpen, Glemmtal, Dientner Grasberge, Pongauer Grasberge, Osterhorngruppe, Gamsfeldgruppe, Untersbergstock, Chiemgauer Alpen, Heutal, Reiteralpe



hefty impulse of warmth, increasing natural triggerings in afternoon



on extremely steep grass-covered slopes



Glide-snow avalanches on extremely steep grass-covered slopes and naturally triggered wet-snow activity during daytime

Avalanche danger rises to MODERATE during the course of the day.

Where snow is sufficient, small glide-snow avalanches can release naturally cases in extremely steep terrain ($>40^\circ$), especially where the ground was previously bare of snow. Avoid zones below glide cracks.

Due to solar radiation and warmth, the snowpack becomes increasingly moist, and naturally triggered avalanche activity increases during the course of the day, releases mostly small.

Snowpack structure

Solar radiation makes the snowpack wet, it loses its firmness. On steep rocky slopes which have again been snow on and grassy slopes, the snowpack is wet down to the ground and can glide away. The recent fresh fallen snow is quickly diminishing due to melting.

Weather

Friday night, skies will be clear.

On Saturday frequent sunshine, good visibility. Winds light to moderate from the south. At 2000 m: 0 to 3 degrees.

Outlook

Classic springtime, danger potential is receding due to the natural melting process.

Avalanche problems



Danger ratings



Expositions



morning

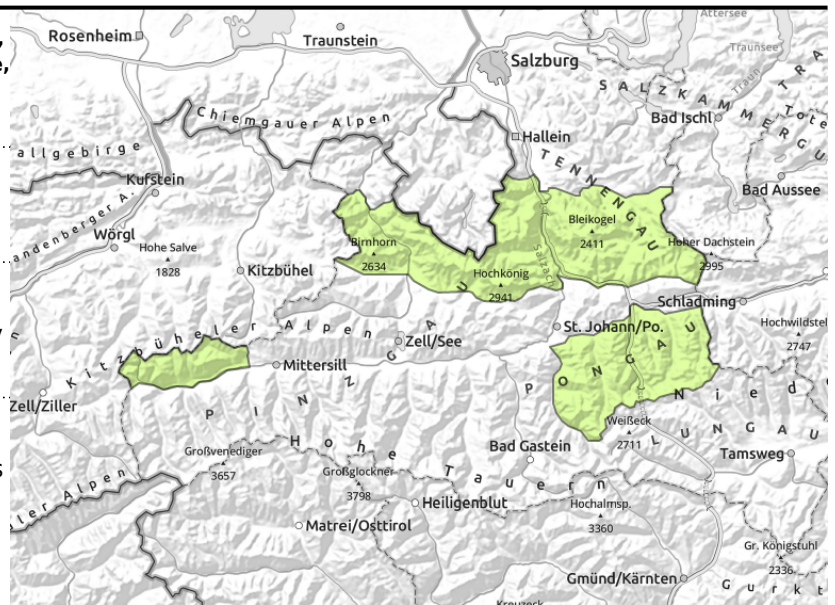
Loferer und Leoganger Steinberge, Steinernes Meer, Hochkönig, Hagengebirge, Göllstock, Tennengebirge, Gosaukamm, Oberpinzgauer Grasberge, Niedere Tauern Nord, Niedere Tauern Alpenhauptkamm



on extremely steep grass-covered slopes, possible at any time of day



above 2200 m, also other aspects at high-alpine altitudes



Springtime situation and isolated persistent weak layer at high altitude

Avalanche danger rises to MODERATE during the course of the day.

Due to solar radiation, increasing wet-snow activity is expected during the daytime. Beginning on extremely steep slopes ($>40^\circ$) in southern and eastern aspects, it will then spread to all aspects, releases small-to-medium. also triggerable by 1 person.

Below 2600 m where the snow is sufficient, naturally triggered glide-snow avalanches can be expected on steep slopes, particularly where the recent fresh snow fell on bare ground. Avoid zones below glide cracks..

Above 2200 m, near-surface weak layers can trigger a slab by 1 person, esp. on very steep slopes ($>35^\circ$) on W/N/NE facing slopes, releases medium-sized.

Snowpack structure

Solar radiation makes the snowpack wet, it loses its firmness. In transitions from old snowpack to fresh snow are faceted layers above 2200 m near crusts which are potential weak layers for slab avalanches. On steep rocky slopes which have again been snow on and grassy slopes, the snowpack is wet down to the ground and can glide away. Up to 2300 m on south facing slopes a melt-freeze crust will form on Saturday night which is capable of bearing loads, then turning to firm in daytime. On north-facing slopes, breakable crusts can be expected up to 2400 m.

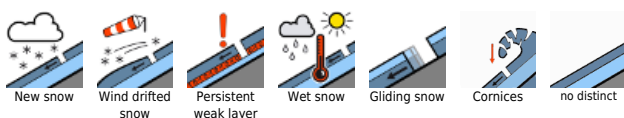
Weather

Friday night, skies will be clear except in southern regions, only scattered clouds at high altitudes. On Saturday frequent sunshine, good visibility, convective cloud build-up in the northern ranges. Along the Tauern and in the Nockberge, low lying clouds will accumulate. Winds light to moderate from the south. in the Tauern strong southerly foehn wind (80 km/hr). At 2000 m: 0 to 3 degrees; at 3000m: -5 to -2 degrees.

Outlook

Classic springtime situation will continue. The persistent weak layer will move upwards.

Avalanche problems



Danger ratings



Expositions



afternoon

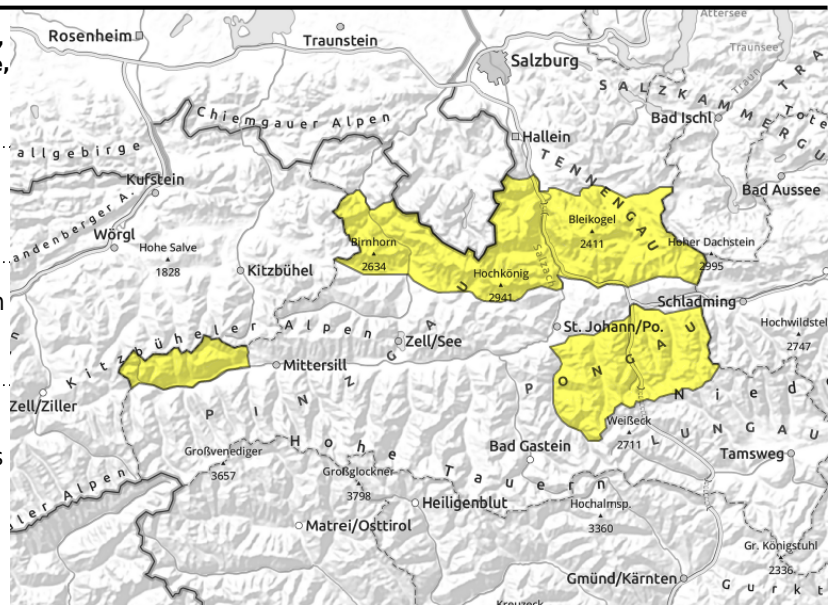
Loferer und Leoganger Steinberge, Steinernes Meer, Hochkönig, Hagengebirge, Göllstock, Tennengebirge, Gosaukamm, Oberpinzgauer Grasberge, Niedere Tauern Nord, Niedere Tauern Alpenhauptkamm



increasing wet-snow activity on south-facing slopes in morning



above 2200 m, also other aspects at high-alpine altitudes



Springtime situation and isolated persistent weak layer at high altitude

Avalanche danger rises to MODERATE during the course of the day.

Due to solar radiation, increasing wet-snow activity is expected during the daytime. Beginning on extremely steep slopes ($>40^\circ$) in southern and eastern aspects, it will then spread to all aspects, releases small-to-medium. also triggerable by 1 person.

Below 2600 m where the snow is sufficient, naturally triggered glide-snow avalanches can be expected on steep slopes, particularly where the recent fresh snow fell on bare ground. Avoid zones below glide cracks..

Above 2200 m, near-surface weak layers can trigger a slab by 1 person, esp. on very steep slopes ($>35^\circ$) on W/N/NE facing slopes, releases medium-sized.

Snowpack structure

Solar radiation makes the snowpack wet, it loses its firmness. In transitions from old snowpack to fresh snow are faceted layers above 2200 m near crusts which are potential weak layers for slab avalanches. On steep rocky slopes which have again been snow on and grassy slopes, the snowpack is wet down to the ground and can glide away. Up to 2300 m on south facing slopes a melt-freeze crust will form on Saturday night which is capable of bearing loads, then turning to firm in daytime. On north-facing slopes, breakable crusts can be expected up to 2400 m.

Weather

Friday night, skies will be clear except in southern regions, only scattered clouds at high altitudes. On Saturday frequent sunshine, good visibility, convective cloud build-up in the northern ranges. Along the Tauern and in the Nockberge, low lying clouds will accumulate. Winds light to moderate from the south. in the Tauern strong southerly foehn wind (80 km/hr). At 2000 m: 0 to 3 degrees; at 3000m: -5 to -2 degrees.

Outlook

Classic springtime situation will continue. The persistent weak layer will move upwards.

Avalanche problems



New snow



Wind drifted snow



Persistent weak layer



Wet snow



Gliding snow



Cornices



no distinct

Danger ratings



1

low



2

moderate



3

considerable



4

high



5

very high

Expositions

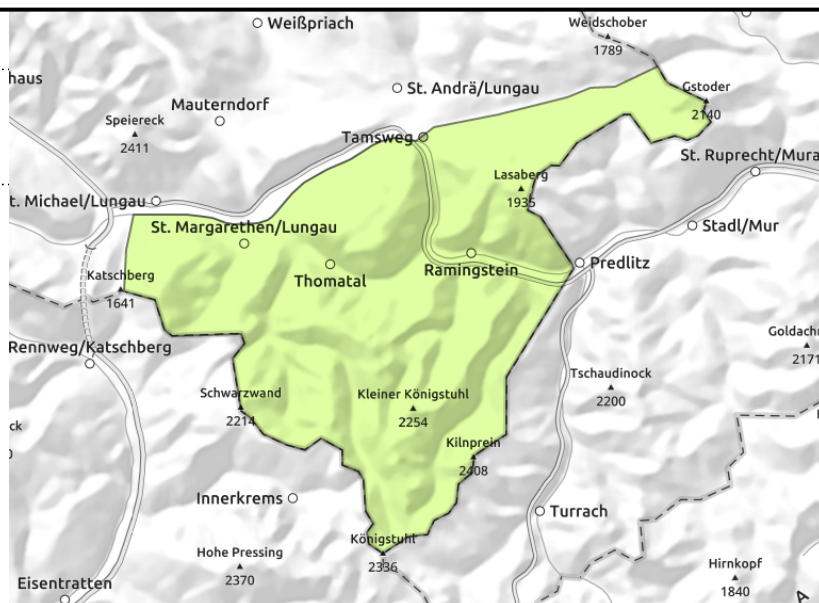


morning

Nockberge



natural releases



Favorable conditions

Avalanche danger is low.

Due to solar radiation, natural releases (loose dry and loose moist) are to be expected in extremely steep terrain ($>40^\circ$). Small releases are the rule.

Fresh snowdrift accumulations in high altitude ridgeline terrain are small, can trigger a small slab.

Danger of falling outweighs that of snow masses.

Snowpack structure

Solar radiation makes the snowpack wet, it loses its firmness. On steep rocky slopes which have again been snow on and grassy slopes, the snowpack is wet down to the ground and can glide away. The recent fresh fallen snow is quickly diminishing due to melting.

Weather

Friday night, skies will be clear except in southern regions, only scattered clouds at high altitudes.

On Saturday frequent sunshine, good visibility, convective cloud build-up in the northern ranges.

Along the Tauern and in the Nockberge, low lying clouds will accumulate. Winds light to moderate from the south. in the Tauern strong southerly foehn wind (80 km/hr). At 2000 m: 0 to 3 degrees; at 3000m: -5 to -2 degrees. During the night, cloudbanks will move in from the south, the foehn will slacken off somewhat.

Outlook

Classic springtime, danger potential is receding due to the natural melting process.

Avalanche problems



New snow



Wind drifted snow



Persistent weak layer



Wet snow



Gliding snow



Cornices



no distinct

Danger ratings



1

low



2

moderate



3

considerable



4

high



5

very high

Expositions



morning

Großvenedigergruppe Alpenhauptkamm, Glocknergruppe Alpenhauptkamm, Goldberggruppe Alpenhauptkamm, Ankogelgruppe, Muhr, Glocknergruppe Nord, Großvenedigergruppe Nord, Niedere Tauern Süd, Goldberggruppe Nord



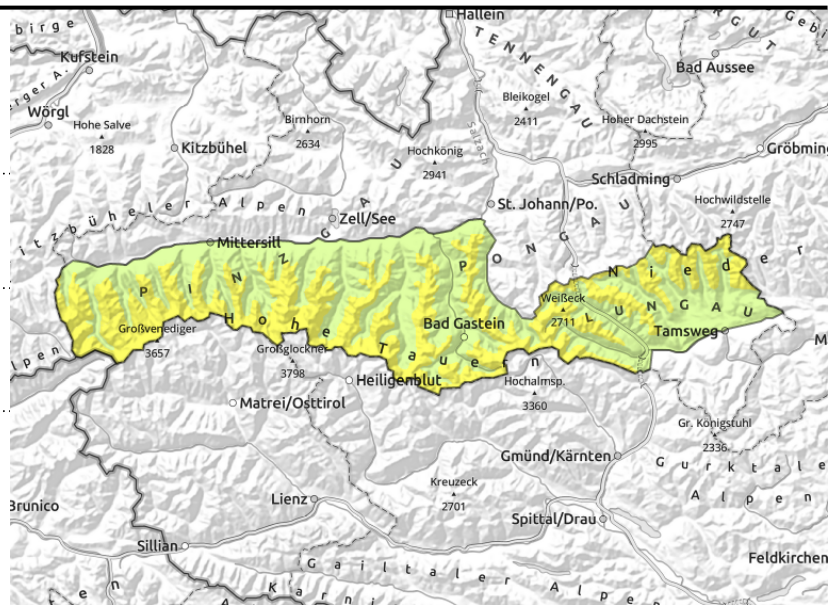
2200 m



above 2200 m



on extremely steep grass-covered slopes



Increasing wet-snow activity during daytime plus near-surface persistent weak layer at high altitudes

Avalanche danger in morning above 2200 m is moderate, below that altitude danger is low. As of late morning, danger at all altitudes rises to MODERATE.

Due to solar radiation, increasing wet-snow activity is expected during the daytime. Beginning on extremely steep slopes (>40°) in southern and eastern aspects, it will then spread to all aspects, releases small-to-medium. also triggerable by 1 person.

Above 2200 m, near-surface weak layers can trigger a slab by 1 person, esp. on very steep slopes (>35°) on W/N/NE facing slopes, releases medium-sized.

Below 2600 m where the snow is sufficient, naturally triggered glide-snow avalanches can be expected on steep slopes, particularly where the recent fresh snow fell on bare ground. Avoid zones below glide cracks.

Snowpack structure

Solar radiation makes the snowpack wet, it loses its firmness. In transitions from old snowpack to fresh snow are faceted layers above 2200 m near crusts which are potential weak layers for slab avalanches. On steep rocky slopes which have again been snow on and grassy slopes, the snowpack is wet down to the ground and can glide away. Up to 2300 m on south facing slopes a melt-freeze crust will form on Saturday night which is capable of bearing loads, then turning to firm in daytime. On north-facing slopes, breakable crusts can be expected up to 2400 m.

Weather

Friday night, skies will be clear except in southern regions, only scattered clouds at high altitudes. On Saturday frequent sunshine, good visibility, convective cloud build-up in the northern ranges. Along the Tauern and in the Nockberge, low lying clouds will accumulate. Winds light to moderate from the south. in the Tauern strong southerly foehn wind (80 km/hr). At 2000 m: 0 to 3 degrees; at 3000m: -5 to -2 degrees. During the night, cloudbanks will move in from the south, the foehn will slacken off somewhat.

Avalanche problems



Danger ratings



Expositions



Outlook

Classic springtime situation will continue. The persistent weak layer will recede only slowly.

Avalanche problems



Danger ratings



Expositions



afternoon

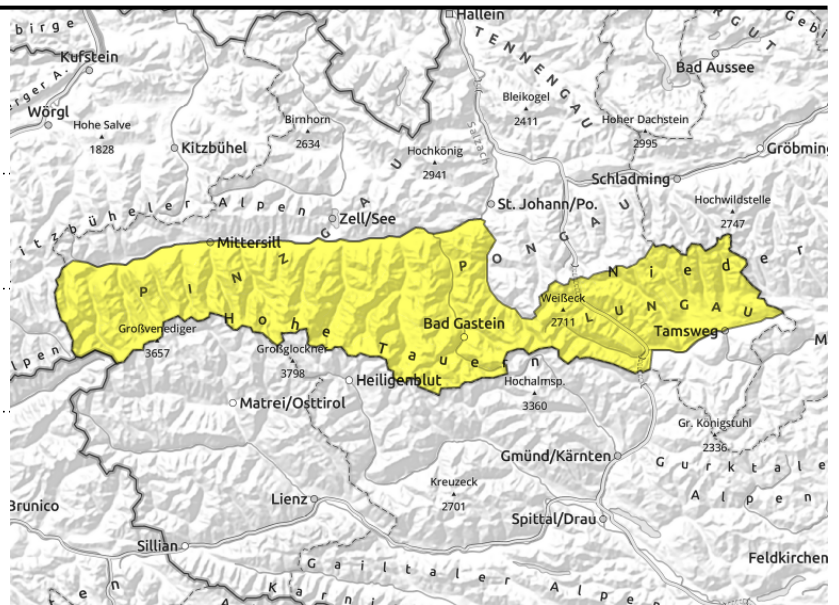
Großvenedigergruppe Alpenhauptkamm, Glocknergruppe Alpenhauptkamm, Goldberggruppe Alpenhauptkamm, Ankogelgruppe, Muhr, Glocknergruppe Nord, Großvenedigergruppe Nord, Niedere Tauern Süd, Goldberggruppe Nord



hefty impulse of warmth



on shady slopes and in high-alpine zones



Increasing wet-snow activity during daytime plus near-surface persistent weak layer at high altitudes

Avalanche danger in morning above 2200 m is moderate, below that altitude danger is low. As of late morning, danger at all altitudes rises to MODERATE.

Due to solar radiation, increasing wet-snow activity is expected during the daytime. Beginning on extremely steep slopes (>40°) in southern and eastern aspects, it will then spread to all aspects, releases small-to-medium. also triggerable by 1 person.

Above 2200 m, near-surface weak layers can trigger a slab by 1 person, esp. on very steep slopes (>35°) on W/N/NE facing slopes, releases medium-sized.

Below 2600 m where the snow is sufficient, naturally triggered glide-snow avalanches can be expected on steep slopes, particularly where the recent fresh snow fell on bare ground. Avoid zones below glide cracks.

Snowpack structure

Solar radiation makes the snowpack wet, it loses its firmness. In transitions from old snowpack to fresh snow are faceted layers above 2200 m near crusts which are potential weak layers for slab avalanches. On steep rocky slopes which have again been snow on and grassy slopes, the snowpack is wet down to the ground and can glide away. Up to 2300 m on south facing slopes a melt-freeze crust will form on Saturday night which is capable of bearing loads, then turning to firm in daytime. On north-facing slopes, breakable crusts can be expected up to 2400 m.

Weather

Friday night, skies will be clear except in southern regions, only scattered clouds at high altitudes. On Saturday frequent sunshine, good visibility, convective cloud build-up in the northern ranges. Along the Tauern and in the Nockberge, low lying clouds will accumulate. Winds light to moderate from the south. in the Tauern strong southerly foehn wind (80 km/hr). At 2000 m: 0 to 3 degrees; at 3000m: -5 to -2 degrees. During the night, cloudbanks will move in from the south, the foehn will slacken off somewhat.

Avalanche problems



New snow



Wind drifted snow



Persistent weak layer



Wet snow



Gliding snow



Cornices



no distinct

Danger ratings



1 low



2 moderate



3 considerable



4 high



5 very high

Expositions



Outlook

Classic springtime situation will continue. The persistent weak layer will recede only slowly.

Translated by Jeffrey McCabe, www.creativtrans.com

Avalanche problems



Danger ratings



Expositions

